

KANSAS CORPORATION COMMISSION  
OIL & GAS CONSERVATION DIVISION

TEMPORARY ABANDONMENT WELL APPLICATION

OPERATOR: License# \_\_\_\_\_  
 Name: \_\_\_\_\_  
 Address 1: \_\_\_\_\_  
 Address 2: \_\_\_\_\_  
 City: \_\_\_\_\_ State: \_\_\_\_\_ Zip: \_\_\_\_\_ + \_\_\_\_\_  
 Contact Person: \_\_\_\_\_  
 Phone:( \_\_\_\_\_ ) \_\_\_\_\_  
 Contact Person Email: \_\_\_\_\_  
 Field Contact Person: \_\_\_\_\_  
 Field Contact Person Phone: ( \_\_\_\_\_ ) \_\_\_\_\_

API No. 15- \_\_\_\_\_  
 Spot Description: \_\_\_\_\_  
 \_\_\_\_\_ - \_\_\_\_\_ - \_\_\_\_\_ - \_\_\_\_\_ Sec. \_\_\_\_\_ Twp. \_\_\_\_\_ S. R. \_\_\_\_\_  E  W  
 \_\_\_\_\_ feet from  N /  S Line of Section  
 \_\_\_\_\_ feet from  E /  W Line of Section  
 GPS Location: Lat: \_\_\_\_\_, Long: \_\_\_\_\_  
(e.g. xx.xxxxx) (e.g. -xxx.xxxxx)  
 Datum:  NAD27  NAD83  WGS84  
 County: \_\_\_\_\_ Elevation: \_\_\_\_\_  GL  KB  
 Lease Name: \_\_\_\_\_ Well #: \_\_\_\_\_  
 Well Type: (check one)  Oil  Gas  OG  WSW  Other: \_\_\_\_\_  
 SWD Permit #: \_\_\_\_\_  ENHR Permit #: \_\_\_\_\_  
 Gas Storage Permit #: \_\_\_\_\_  
 Spud Date: \_\_\_\_\_ Date Shut-In: \_\_\_\_\_

	Conductor	Surface	Production	Intermediate	Liner	Tubing
Size						
Setting Depth						
Amount of Cement						
Top of Cement						
Bottom of Cement						

Casing Fluid Level from Surface: \_\_\_\_\_ How Determined? \_\_\_\_\_ Date: \_\_\_\_\_  
 Casing Squeeze(s): \_\_\_\_\_ to \_\_\_\_\_ w / \_\_\_\_\_ sacks of cement, \_\_\_\_\_ to \_\_\_\_\_ w / \_\_\_\_\_ sacks of cement. Date: \_\_\_\_\_  
(top) (bottom) (top) (bottom)  
 Do you have a valid Oil & Gas Lease?  Yes  No  
 Depth and Type:  Junk in Hole at \_\_\_\_\_  Tools in Hole at \_\_\_\_\_ Casing Leaks:  Yes  No Depth of casing leak(s): \_\_\_\_\_  
(depth) (depth)  
 Type Completion:  ALT. I  ALT. II Depth of:  DV Tool: \_\_\_\_\_ w / \_\_\_\_\_ sacks of cement  Port Collar: \_\_\_\_\_ w / \_\_\_\_\_ sack of cement  
(depth) (depth)  
 Packer Type: \_\_\_\_\_ Size: \_\_\_\_\_ Inch Set at: \_\_\_\_\_ Feet  
 Total Depth: \_\_\_\_\_ Plug Back Depth: \_\_\_\_\_ Plug Back Method: \_\_\_\_\_

**Geological Data:**

Formation Name	Formation Top	Formation Base	Completion Information
1. _____	At: _____	to _____ Feet	Perforation Interval _____ to _____ Feet or Open Hole Interval _____ to _____ Feet
2. _____	At: _____	to _____ Feet	Perforation Interval _____ to _____ Feet or Open Hole Interval _____ to _____ Feet

UNDER PENALTY OF PERJURY I HEREBY ATTEST THAT THE INFORMATION CONTAINED HEREIN IS TRUE AND CORRECT TO THE BEST OF MY KNOWLEDGE

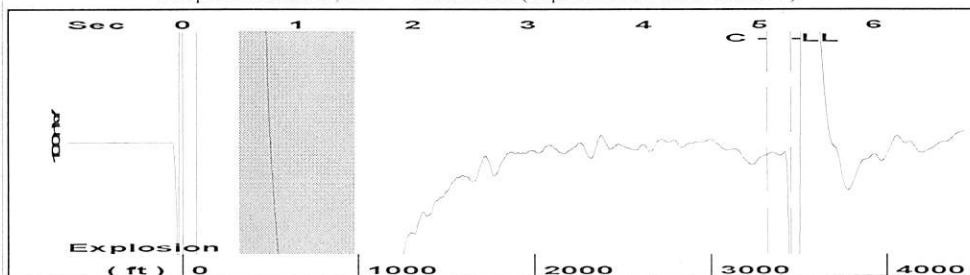
Submitted Electronically

<b>Do NOT Write in This Space - KCC USE ONLY</b>	Date Tested: _____	Results: _____	Date Plugged: _____	Date Repaired: _____	Date Put Back in Service: _____
	Review Completed by: _____ Comments: _____				
TA Approved: <input type="checkbox"/> Yes <input type="checkbox"/> Denied Date: _____					

Mail to the Appropriate KCC Conservation Office:

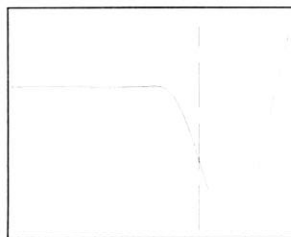
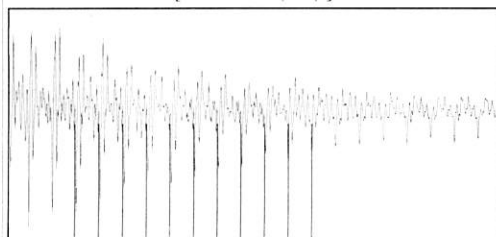
	KCC District Office #1 - 210 E. Frontview, Suite A, Dodge City, KS 67801	Phone 620.682.7933
	KCC District Office #2 - 3450 N. Rock Road, Building 600, Suite 601, Wichita, KS 67226	Phone 316.337.7400
	KCC District Office #3 - 137 E. 21st St., Chanute, KS 66720	Phone 620.902.6450
	KCC District Office #4 - 2301 E. 13th Street, Hays, KS 67601-2651	Phone 785.261.6250

Group: 3G Production, LLC Well: Lonker (acquired on: 01/23/19 09:06:21 )



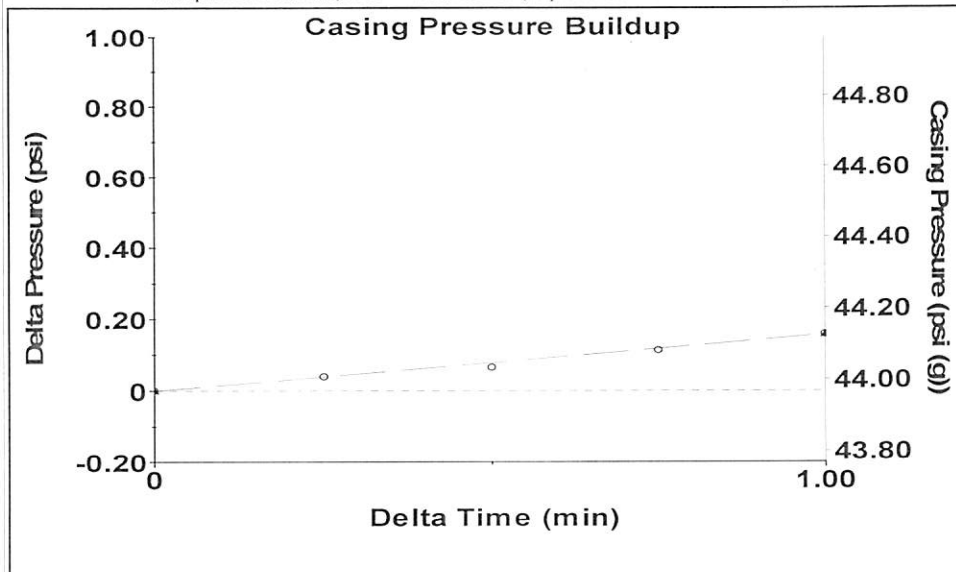
Filter Type High Pass Automatic Collar Count Yes Time 5.272 sec  
 Manual Acoustic Velo 1299.18 ft/s Manual JTS/sec 20.4918 Joints 108.917 Jts  
 Depth 3452.65 ft

[ 0.5 to 1.5 (Sec) ]



Analysis Method: Automatic

Group: 3G Production, LLC Well: Lonker (acquired on: 01/23/19 09:06:21 )



Change in Pressure 0.16 psi PT15469  
 Change in Time 1.00 min Range 0 - ? psi

Group: 3G Production, LLC Well: Lonker (acquired on: 01/23/19 09:06:21 )

Production  
 Current Potential  
 Oil - \* - BBL/D  
 Water - \* - BBL/D  
 Gas - \* - Mscf/D  
 IPR Method Vogel  
 PBHP/SBHP - \* -  
 Production Efficiency 0.0

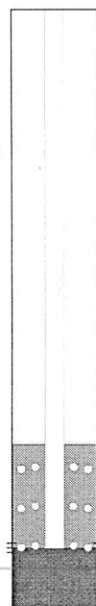
Oil 40 deg.API  
 Water 1.05 Sp.Gr.H2O  
 Gas 0.69 Sp.Gr.AIR

Acoustic Velocity 1309.81 ft/s

Formation Submergence  
 Total Gaseous Liquid Column HT (TVD) 967 ft  
 Equivalent Gas Free Liquid HT (TVD) 781 ft

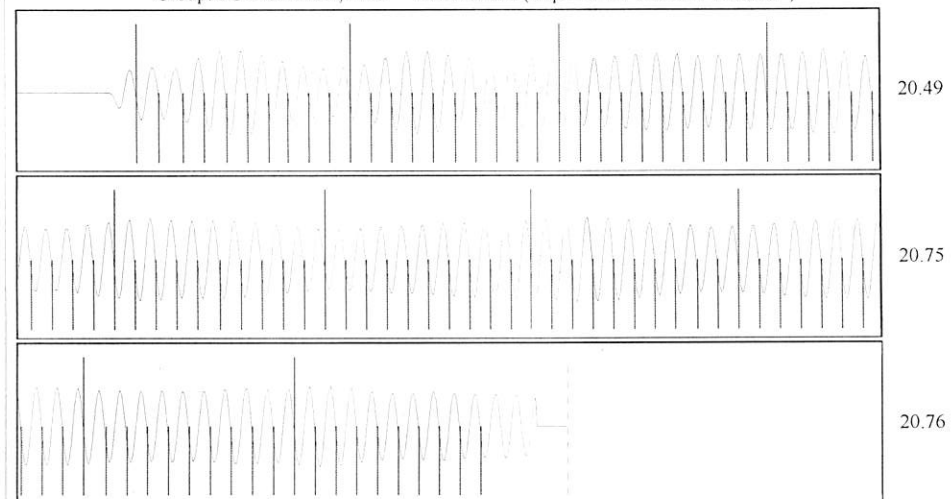
Acoustic Test

Casing Pressure 44.0 psi (g)  
 Casing Pressure Buildup 0.157 psi  
 1.00 min  
 Gas/Liquid Interface Pressure 48.9 psi (g)  
 Liquid Level Depth 3452.65 ft  
 Tubing Intake Depth 4420.00 ft  
 Formation Depth 4415.00 ft



Producing  
 Casing % Liquid 81 %  
 Tubing Intake 311.7 (g)  
 Producing BHP 309.4 psi (g)  
 Static BHP - \* - psi (g)

Group: 3G Production, LLC Well: Lonker (acquired on: 01/23/19 09:06:21 )



Acoustic Velocity 1309.81 ft/s Joints counted 99  
 Joints Per Second 20.6594 jts/sec Joints to liquid level 108.917  
 Depth to liquid level 3452.65 ft Filter Width 18.4918 22.4918  
 Automatic Collar Count Yes Time to 1st Collar 0.276 5.068

Conservation Division  
District Office No. 1  
210 E. Frontview, Suite A  
Dodge City, KS 67801



Phone: 620-682-7933  
<http://kcc.ks.gov/>

Dwight D. Keen, Chair  
Shari Feist Albrecht, Commissioner  
Jay Scott Emler, Commissioner

Laura Kelly, Governor

January 29, 2019

Kenneth C Gates  
3G Production, LLC  
10387 NE SR 61  
PO BOX 847  
PRATT, KS 67124-0847

Re: Temporary Abandonment  
API 15-007-21681-00-00  
LONKER-HARRELL 1  
NW/4 Sec.14-32S-13W  
Barber County, Kansas

Dear Kenneth C Gates:

"Your temporary abandonment (TA) application for the well listed above has been approved. In accordance with K.A.R. 82-3-111 the TA status of this well will expire 01/29/2020.

- \* If you return this well to service or plug it, please notify the District Office.
- \* If you sell this well you are required to file a Transfer of Operator form, T-1.
- \* If the well will remain temporarily abandoned, you must submit a new TA application, CP-111, before 01/29/2020.

You may contact me at the number above if you have questions.

Very truly yours,

Michael Maier"