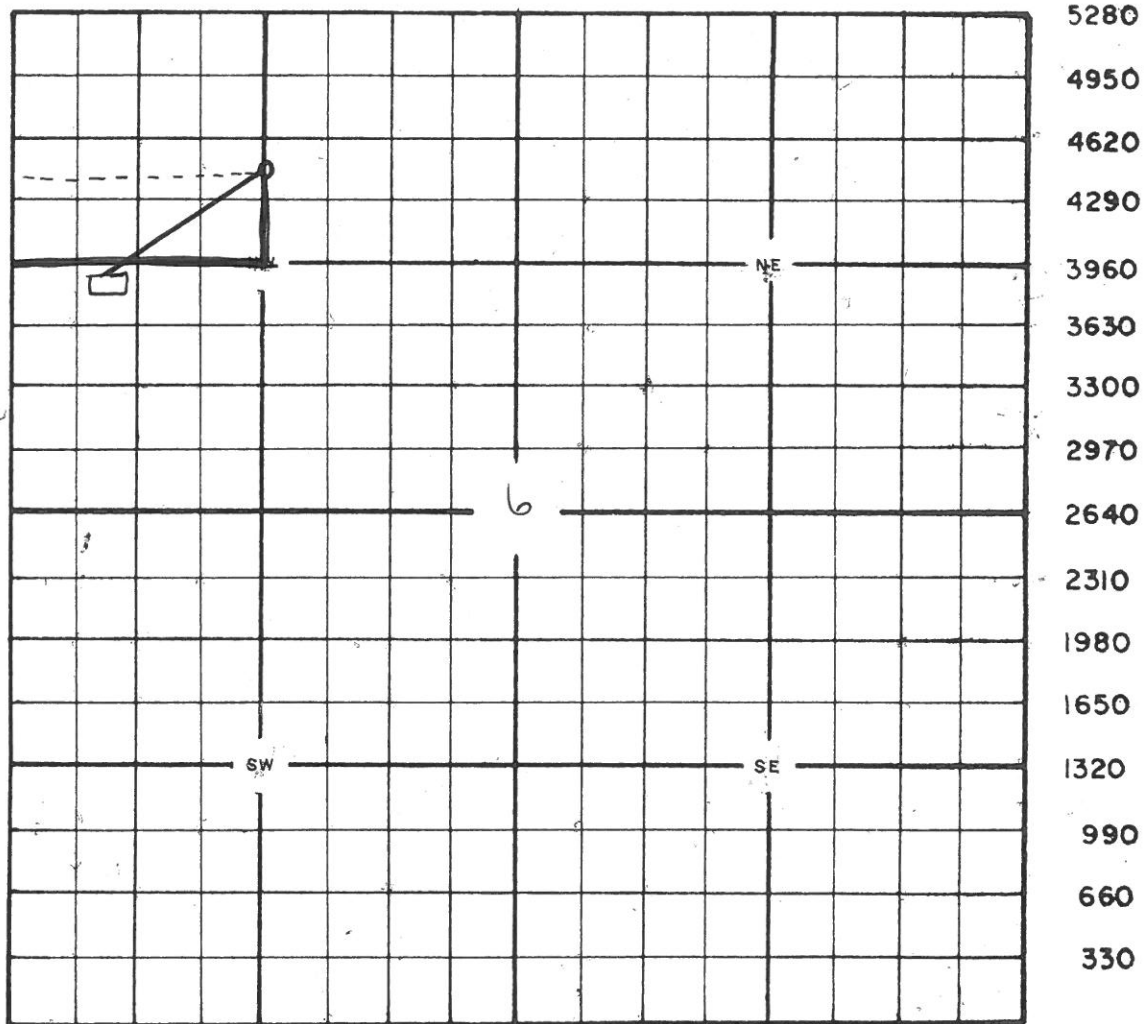
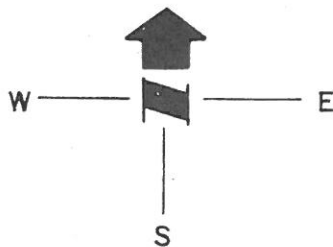


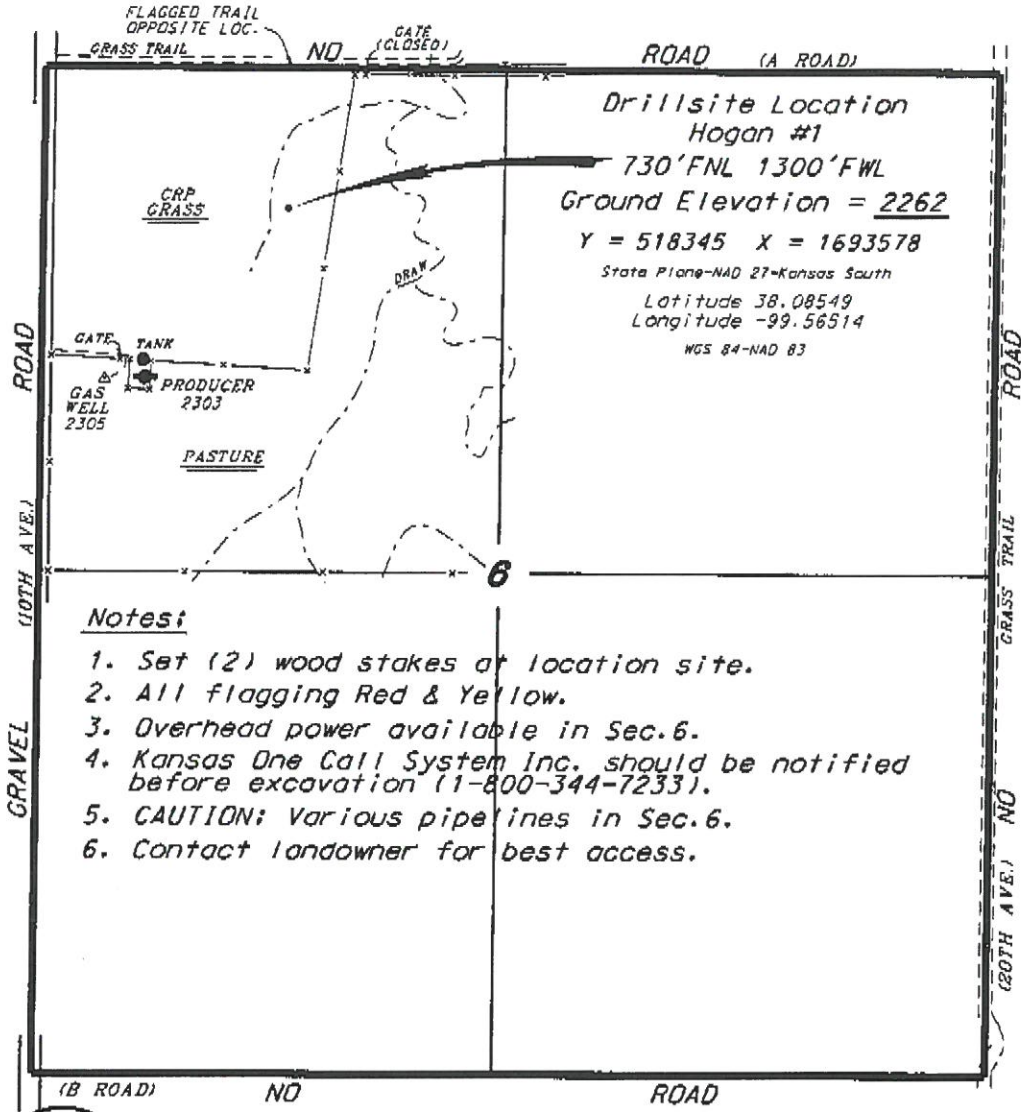
CENTRAL KANSAS SURVEYING & MAPPING

2344 Washington - Great Bend, Kansas 67530 - (316) 792-5754 or (316) 792-2873

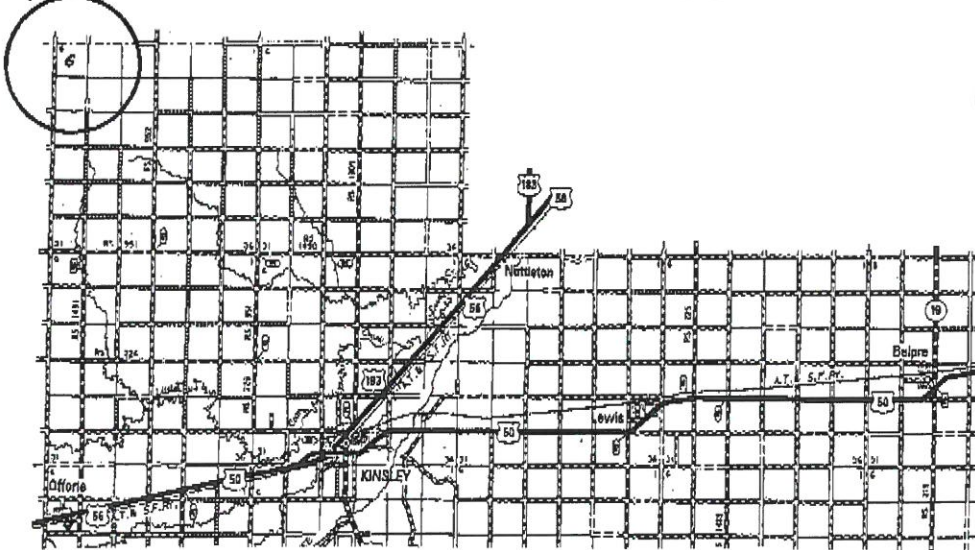
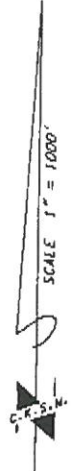


5280
4950
4620
4290
3960
3630
3300
2970
2640
2310
1980
1650
1320
990
660
330

**BEAR PETROLEUM, LLC
HOGAN LEASE
NW. 1/4. SECTION 6. T23S. R20W
EDWARDS COUNTY, KANSAS**



*Ingress and egress to location as shown on this plat is per usage only and may not be legally opened for public use. Contact landowner, tenant and county road department for access.



Controlling data is based upon the best maps and photographs available to us and upon a regular section of land containing 640 acres.

Approximate section lines were determined using the normal standard of care of oilfield surveyors practicing in the state of Kansas. The section corners, which establish the precise section lines, were not necessarily located, and the exact location of the drillsite location in the section is not guaranteed. Therefore, the operator, accepting this service and accepting this plat and all other parties relying thereon agree to hold Central Kansas Oilfield Services, Inc., its officers and employees harmless from all losses, costs and expenses and hold entities released from any liability from incidental or consequential damages.

Elevations derived from National Geodetic Vertical Datum.

Date **December 11, 2018**

