



# Fall & Associates

Stake and Elevation Service

P.O. Box 222

Pretty Prairie, KS. 67570

785-243-7506

Date 1-9-19

Invoice Number 0104191

MURFIN DRILLING

1-32

Maheh 'A'

Operator

Number

Farm Name

Rawlins-KS

32

1s

31w

1800'FNL 1980'FEL

County-State

S

T

R

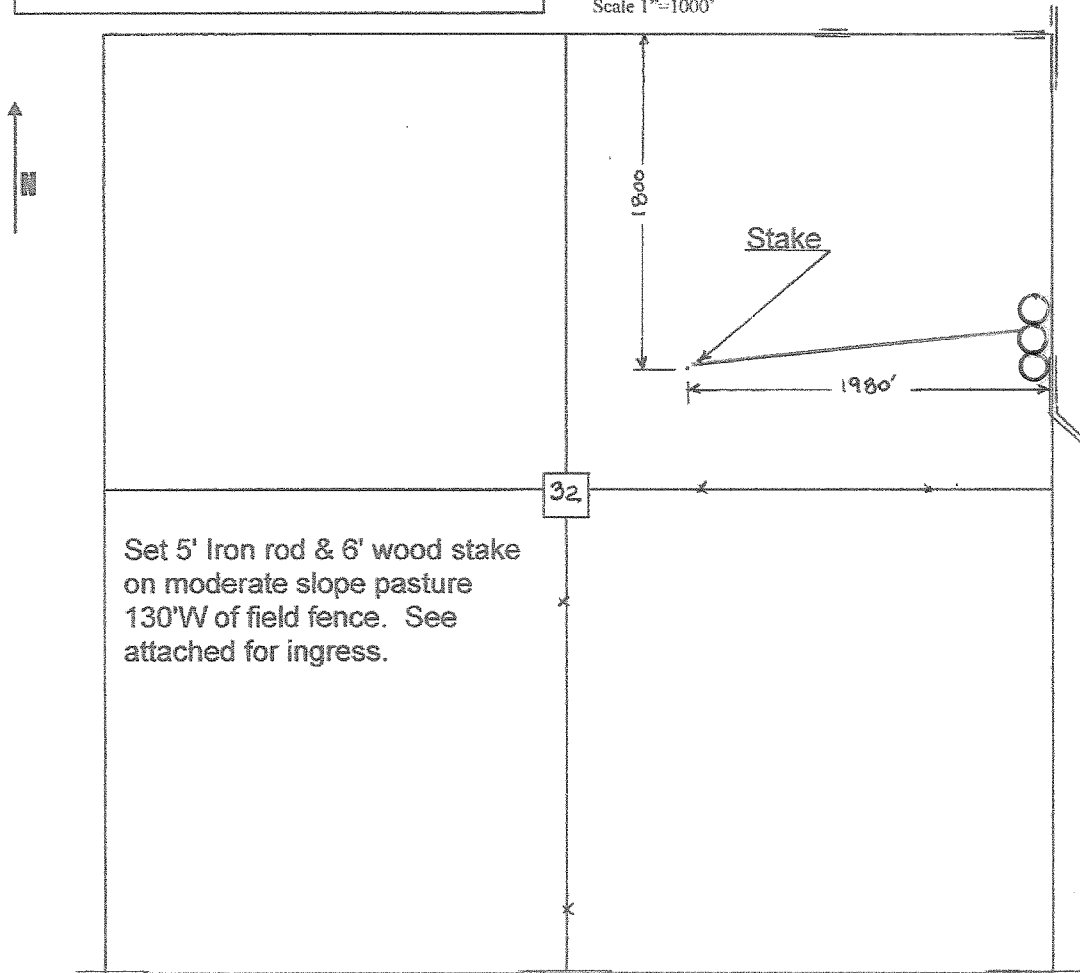
Location

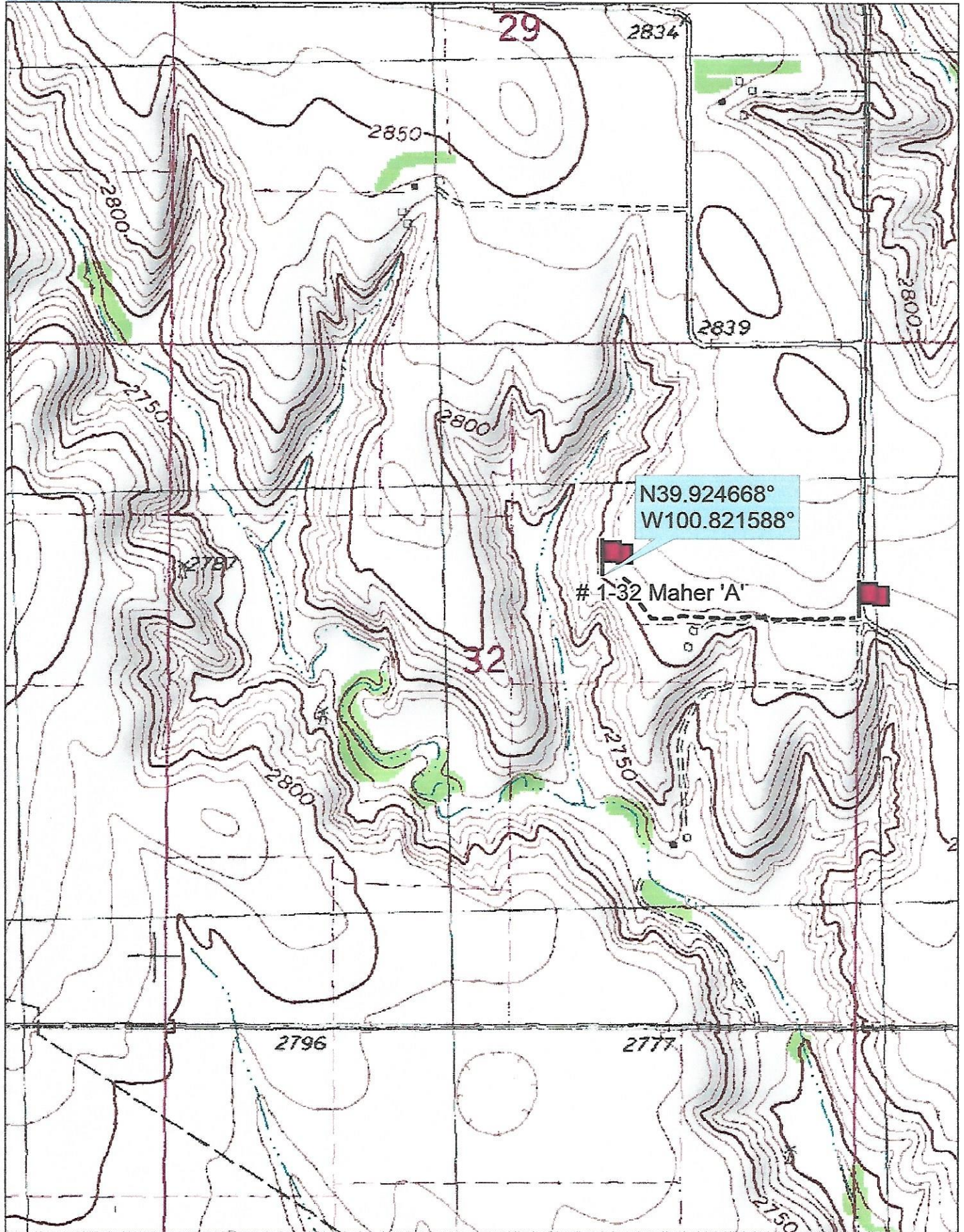
Murfin Drilling  
250 N Water  
Suite 300  
Wichita, KS. 67202

Elevation 2794 Gr.

Ordered By: Shauna

Scale 1"=1000'





Data use subject to license.

© DeLorme. Topo North America™ 9.

www.delorme.com

