

Scale 1:240 Imperial

Well Name: HOFFMAN #2  
Surface Location: SW SE SW NE Sec. 23 - 15S - 17W  
Bottom Location:  
API: 15-051-26936  
License Number: 33813  
Spud Date: 12/14/2018 Time: 5:30 PM  
Region: ELLIS COUNTY  
Drilling Completed: Time:  
Surface Coordinates: 2380' FNL & 1810' FEL  
Bottom Hole Coordinates:  
Ground Elevation: 1956.00ft  
K.B. Elevation: 1961.00ft  
Logged Interval: 0.00ft To: 0.00ft  
Total Depth: 0.00ft  
Formation: LANSING-KANSAS CITY; ARBUCKLE  
Drilling Fluid Type: FRESH WATER / CHEMICAL GEL

**OPERATOR**

Company: JASON OIL COMPANY, LLC  
Address: 3718 183rd RD  
P.O. BOX 701  
RUSSELL, KS 67665  
Contact Geologist: SHELDON BENNETT  
Contact Phone Nbr: (785) 483-4204  
Well Name: HOFFMAN #2  
Location: SW SE SW NE Sec. 23 - 15S - 17W  
API: 15-051-26936  
Pool: State: KANSAS Field: DEGENHART EAST  
Country: USA

**SURFACE CO-ORDINATES**

Well Type: Vertical  
Longitude: -99.1774346  
Latitude: 38.7340785  
N/S Co-ord: 2380' FNL  
E/W Co-ord: 1810' FEL

**LOGGED BY**



Company: BIG CREEK CONSULTING, INC.  
Address: 1909 MAPLE  
ELLIS, KS 67637  
Phone Nbr: (785) 259-3737  
Logged By: GEOLOGIST Name: JEFF LAWLER

**CONTRACTOR**

Contractor: WW DRILLING  
Rig #: 8  
Rig Type: MUD ROTARY  
Spud Date: 12/14/2018 Time: 5:30 PM  
TD Date: Time:  
Rig Release: Time:

### ELEVATIONS

K.B. Elevation: 1961.00ft  
K.B. to Ground: 5.00ft

Ground Elevation: 1956.00ft

### NOTES

### WELL COMPARISON SHEET

FORMATION	HOFFMAN #2												HOFFMAN #1												HOFFMAN #3											
	1961				1956				1954				1962				1953				1956															
	LOG TOPS		SAMPLE TOPS		COMP. CARD		LOG		SMPL.		COMP. CARD		LOG		SMPL.		COMP. CARD		LOG		SMPL.		COMP. CARD		LOG		SMPL.									
	DEPTH	DATUM	DEPTH	DATUM	DEPTH	DATUM	DEPTH	DATUM	DEPTH	DATUM	DEPTH	DATUM	DEPTH	DATUM	DEPTH	DATUM	DEPTH	DATUM	DEPTH	DATUM	DEPTH	DATUM	DEPTH	DATUM	DEPTH	DATUM	DEPTH	DATUM	DEPTH	DATUM						
ANHYDRITE TOP			1084	877	1097	857			+	20	1091	871			+	6	1085	868			+	9	1098	858			+	19								
BASE			1127	834	1122	832			+	2	1133	829			+	5	1119	834			+	0	1131	825			+	9								
TOPEKA			2980	-1019	2962	-1008			-	11	2980	-1018			-	1	2963	-1010			-	9	2968	-1012			-	7								
HEEBNER			3206	-1245	3187	-1233			-	12	3203	-1241			-	4	3189	-1236			-	9	3196	-1240			-	5								
TORONTO			3225	-1264	3205	-1251			-	13	3223	-1261			-	3																				
DOUGLE SHALE					3219	-1265											3222	-1269																		
LKC			3251	-1290	3235	-1281			-	9	3251	-1289			-	1	3238	-1285			-	5	3244	-1288			-	2								
BKC					3455	-1501					3481	-1519					3463	-1510					3474	-1518												
ARBUCKLE					3496	-1542					3552	-1590					3555	-1602					3551	-1595												
RTD					3604	-1650					3600	-1638											3558	-1602												
LTD					3604	-1650					3608	-1646											3556	-1600												

### DST #1 LKC A - D 3234' - 3308'



**Company: Jason Oil Company, LLC**  
**Lease: Hoffman #2**

SEC: 23 TWN: 15S RNG: 17W  
County: ELLIS  
State: Kansas  
Drilling Contractor: WW Drilling, LLC - Rig 8  
Elevation: 1962 EGL  
Field Name: Degenhart East  
Pool: Infield  
Job Number: 269

**Operation:**

Uploading recovery & pressures

**DATE**

December 19 2018

DST #1 Formation: Lans A-D Test Interval: 3234 - 3308' Total Depth: 3308'

Time On: 14:24 12/19 Time Off: 23:09 12/19  
Time On Bottom: 16:18 12/19 Time Off Bottom: 20:33 12/19

**Recovered**

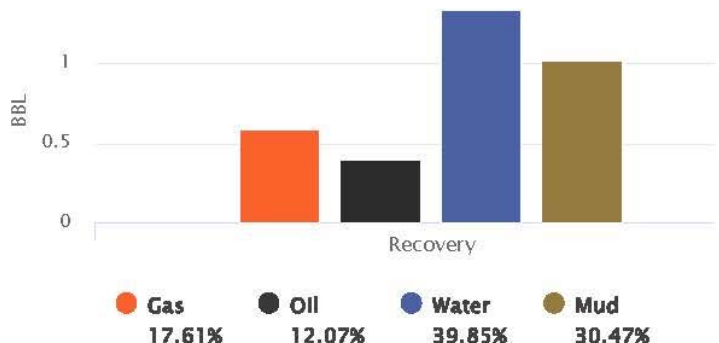
Foot	BBLs	Description of Fluid	Gas %	Oil %	Water %	Mud %
126	1.79298	SLWCOCHGCM	33	20	10	37
189	1.5669633	SLOCMCW	0	3	74	23

Total Recovered: 315 ft  
Total Barrels Recovered: 3.3599433

Reversed Out  
NO

Initial Hydrostatic Pressure	1525	PSI
Initial Flow	14 to 84	PSI
Initial Closed in Pressure	809	PSI
Final Flow Pressure	71 to 151	PSI
Final Closed in Pressure	814	PSI
Final Hydrostatic Pressure	1502	PSI
Temperature	98	°F
Pressure Change Initial Close / Final Close	0.0	%

**Recovery at a glance**



**DST #1 LKC A - D 3234' - 3308'**



**Company: Jason Oil Company, LLC**  
**Lease: Hoffman #2**

SEC: 23 TWN: 15S RNG: 17W  
 County: ELLIS  
 State: Kansas  
 Drilling Contractor: WW Drilling, LLC - Rig 8  
 Elevation: 1962 EGL  
 Field Name: Degenhart East  
 Pool: Infield  
 Job Number: 269

**Operation:**  
 Uploading recovery & pressures

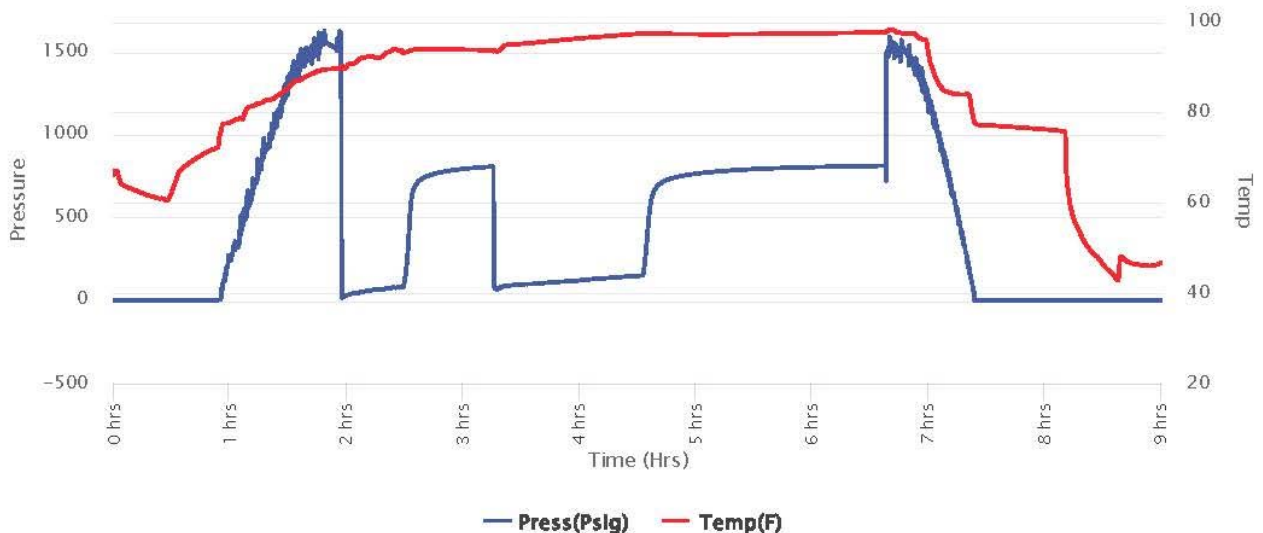
**DATE**  
 December  
**19**  
 2018

**DST #1 Formation: Lans A-D Test Interval: 3234 - 3308' Total Depth: 3308'**  
 Time On: 14:24 12/19 Time Off: 23:09 12/19  
 Time On Bottom: 16:18 12/19 Time Off Bottom: 20:33 12/19

Electronic Volume Estimate:  
 1070'

<u>1st Open</u>	<u>1st Close</u>	<u>2nd Open</u>	<u>2nd Close</u>
Minutes: 30	Minutes: 45	Minutes: 75	Minutes: 120
Current Reading: 33.9" at 30 min	Current Reading: 0" at 45 min	Current Reading: 88" at 75 min	Current Reading: 6.7" at 120 min
Max Reading: 33.9"	Max Reading: 0"	Max Reading: 88"	Max Reading: 7.4"

Inside Recorder












**ROCK TYPES**

 shale, gry       Carbon Sh

**OTHER SYMBOLS**




**MISC**

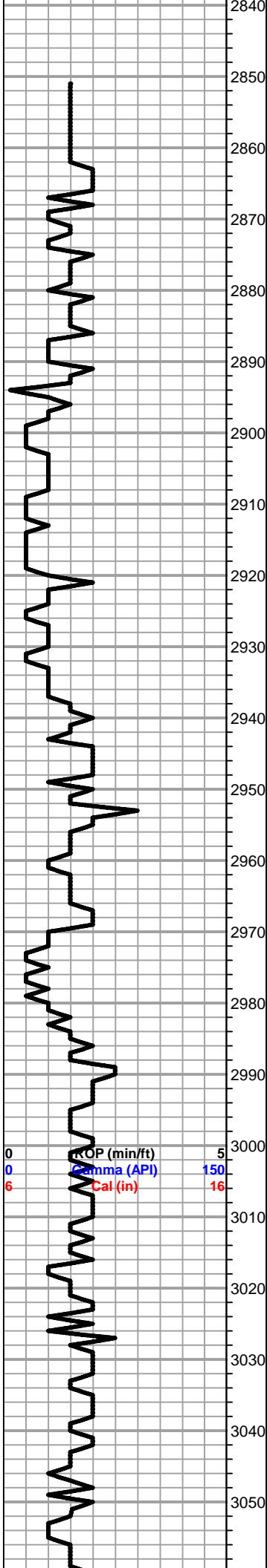
-  Daily Report
-  Digital Photo
-  Document
-  Folder
-  Link
-  Vertical Log File
-  Horizontal Log File
-  Core Log File
-  Drill Cuttings Rpt

**DST**

-  DST Int
-  DST alt

Printed by GEOstrip VC Striplog version 4.0.8.15 ([www.grsi.ca](http://www.grsi.ca))

Curve Track #1	Depth   Intervals	DST	Lithology	Oil Show	Geological Descriptions	Curve Track #3
ROP (min/ft)  Gamma (API)  Cal (in) 	Cored Interval DST Interval					
1:240 Imperial 0 ROP (min/ft) 5 0 Gamma (API) 150 6 Cal (in) 16	2810 2820 2830				<p><b>1' DRILL TIME THROUGH ANHYDRITE FROM 1080' - 1140'</b>  <b>1' DRILL TIME FROM 2850' - RTD</b>  <b>10' WET/DRY SAMPLES FROM 2900' - RTD</b></p> <p><b>GEOLOGICAL SUPERVISION BY JEFF LAWLER FROM 2850' - RTD</b></p> <p><b>8 5/8" SURFACE PIPE SET @ 1088' SURVEY 1/4 deg.</b></p> <p><b>ANHYDRITE TOP 1084' (+877) E-LOG</b>  <b>ANHYDRITE BASE 1127' (+834)</b></p>	1:240 Imperial



Sh- Gray Green Maroon, silty & calcareous, argillaceous clumps, gritty & earthy, some sl sandy

Sh- A/A w/ influx of gummy & sandy shales

Lm- Cream Off White, FXLN, chalky in part, fsl, poorly dev. w/ sctrd XLN porosity

Sh- Gray, sl calcareous, semi-waxy & dense, micaceous

Lm- Buff Tan Cream, FXLN, fsl, trashy rip-up clasts, chalky in part, sctrd to dense XLN porosity, barren

Sh- Gray, silty & calcareous, some gummy clumps

Lm- Cream Tan Buff, VF-FXLN, dense, mostly well cemented & mostly tight w/ dense XLN porosity, few sl dolomitic, barren

Sh- Gray Green, soft & silty, gummy clumps & wash

**TOPEKA 2980' (-1019) E-LOG** Lm- Cream Off White, VF-FXLN, fsl & dense, well cemented & poorly dev. w/ sctrd XLN porosity, few pcs w/ clear reXLN secondary porosity, possible fracturing (?)

Lm- Cream Off White, FXLN, granular, mod. well dev. w/ dense XLN porosity, barren

Lm- Cream Off White, FXLN, sl fsl, dense & well cemented, poor vis. to dense XLN porosity, barren

Lm- A/A w/ gray fsl trashy bioclastics, dense XLN & secondary XLN porosity

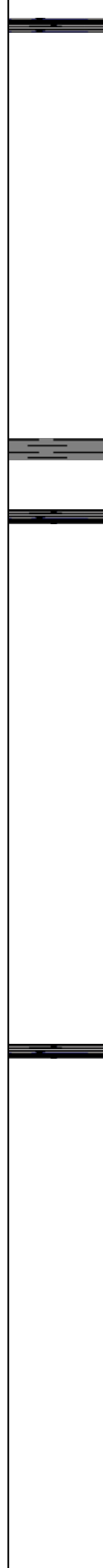
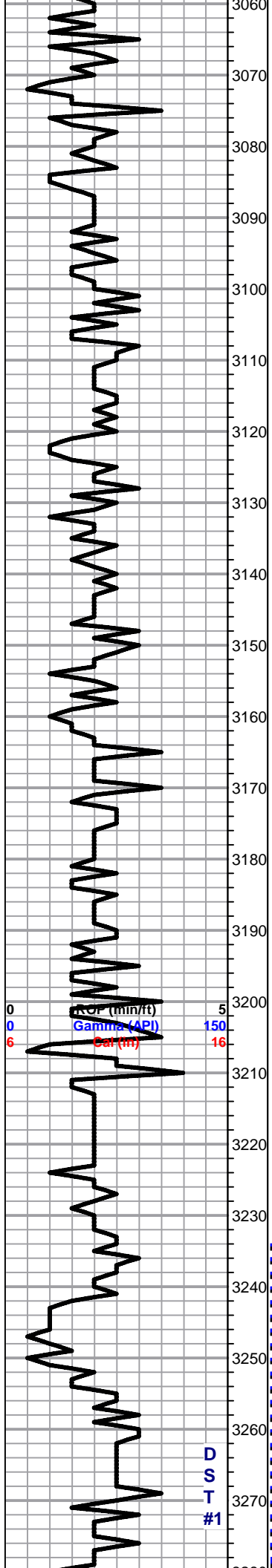
Lm- Tan Buff, FXLN, fsl, trashy, dense XLN & secondary XLN porosity, barren

Lm- Gray Buff, FXLN, dense, well cemented, fsl w/ sctrd XLN porosity

Lm- Tan, FXLN, fsl & mostly tight w/ sctrd XLN porosity, barren

Lm- A/A w/ buff VFXLN, cherty Ls w/o vis. porosity

0 ROP (min/ft) 5  
 0 Gamma (API) 150  
 6 Cal (in) 16



Sh- Black Gray White, fissile & carbonaceous, silty & calcareous, soft

Lm- Bone White, VFXLN, tight well cemented cherty Ls w/o vis. porosity, pristine & barren

Lm- Cream Off White, FXLN, sctrd mottling, poor vis. porosity, barren

Lm- Gray Tan, FXLN, heavily mottled, fsl, sl trashy, dense XLN porosity, barren

Lm- Cream, VF-FXLN, dense, well cemented & tight w/ poor vis. porosity, clean & barren

Lm- Cream Off White, VF-FXLN, dense tight, poor vis. porosity, barren

Sh- Back Gray, fissile & carbonaceous, silty & calcareous

Lm- Cream Tan, FXLN Vf Grn, dense tight mix, poor vis. porosity & heavily mottling, barren

Lm- Cream Gray, FXLN, fsl, sctrd XLN porosity, barren

Lm- Cream Off White, FXLN, sl chalky in part, sctrd mottling, sctrd XLN porosity, barren

Lm- Cream Buff Gray, FXLN, sl fsl, well cemented, sctrd to dense XLN porosity, sctrd mottling, barren

Lm- A/A sl chalky in part, barren

Lm- Cream Tan, FXLN, dense, well cemented, mostly tight w/ sctrd XLN porosity & mottling, barren

**HEEBNER 3206' (-1245) E-LOG** Sh-Black Gray, fissile & carbonaceous, silty & soft

Sh- Maroon Green, gummy wash, dense & silty

**TORONTO 3225' (-1264) E-LOG** Lm- Cream Off White, FXLN, sl fsl, poorly dev. w/ sctrd XLN porosity, some sctrd mottling, barren

Lm- Off White, VF-FXLN, dense, well cemented, mostly tight w/ sctrd XLN porosity, vry clean & barren, some sl cherty Ls

Sh- Gray Green Maroon, soft & silty, gritty & earthy

**LKC 3251' (-1290) E-LOG** Lm- Cream Off White, FXLN, fsl & sl oolitic, sctrd to dense XLN & rare fn ppt porosity, TR WK STN, NSFO, SL OILY SHEEN, TR ODR??

Lm- Cream Off White, FXLN, dense, well cemented, sctrd XLN porosity, several pcs of golden cherty densely packed oolitic Ls, some w/ possible fractured porosity, barren

Sh- Gray Maroon, silty & soft, gritty & earthy

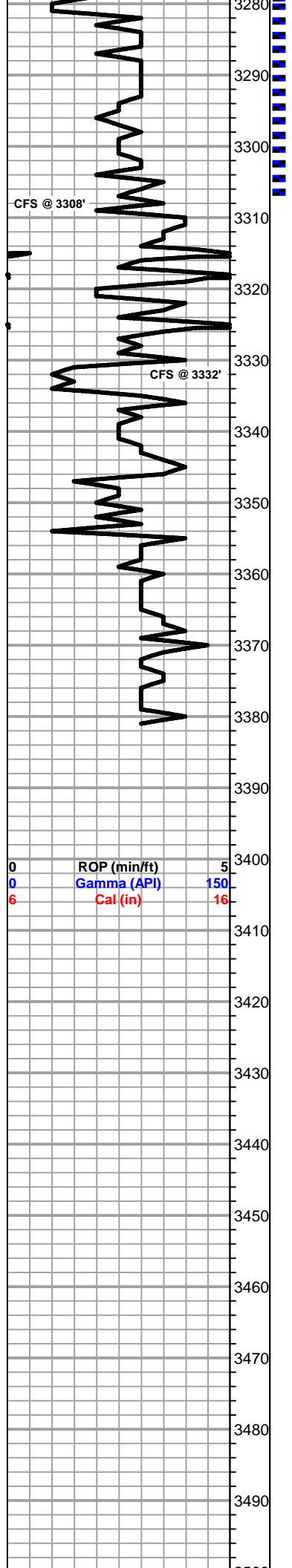
SHORT TRIP SURVEY 1 deg

DST #1 LKC A-D  
3234' - 3308'  
30-45-75-120

315' TOTAL FLUID  
126' W&OCM  
(33% G, 20% O,  
10% W, 37% M)  
189' SLO&MCW  
(3% O, 74% W,  
23% M)

IFP: 14-84#  
FFP: 71-151#  
SIP: 809-814#  
Rw: .29 @ 40 deg  
CHLOR: 55K

3250.jpg



CFS @ 3308'

CFS @ 3332'

- Lm- Cream Semi-Translucent, FXLN, oolitic, sctrd fn ppt & XLN porosity, reXLN w/in porosity, SCTRD LT STN, NSFO, NO ODR
- Lm- Off White, FXLN Vf Grn, A/A, less developed, some soft white chalk, barren
- Lm- Tan, FXLN, oolitic, mod. well dev. sctrd oomoldic XLN & ppt porosity, LT STN, NSFO, TR ODR
- Lm- Cream Tan, FXLN, Vf Grn, sl oolitic, mostly tight, less XLN porosity, some soft white chalk, barren
- Lm/Chert- Tan, FXLN, consistent XLN dolomitic porosity, barren, several pcs of porcelain like cherty Ls, barren
- Lm- Cream, FXLN, fsl & oolitic, mod. well dev. w/ sctrd XLN & ppt inter oolite porosity, SCTRD DRK STN, NSFO, TR ODR??
- Lm- Tan Cream, FXLN, fsl & oolitic, some sl chalky in part, poor vis. porosity, clean & barren
- Lm- Cream Tan, FXLN, mix of loosely cemented sl dolomitic Ls & tight cherty Ls w/ poor vis. porosity, all barren
- Lm- Cream Tan, VF-FXLN, dense tight mix, some sl fsl & sl oolitic, tight w/ clear replacement inter oolite cementation, some w/ sctrd XLN porosity, all vry clean & barren
- Lm- Cream Tan, VFXLN, tight mix of well cemented mudstone & porcelain like cherty Ls, all w/ min. vis. porosity, some soft white chalk

\_3280.jpg

\_3300.jpg

\_3325.jpg

3500  
3510  
3520  
3530  
3540  
3550  
3560  
3570  
3580  
3590  
3600  
3610  
3620  
3630  
3640

0	ROP (min/ft)	5
0	Gamma (API)	150
6	Cal (in)	16









0.5 mm



0.5 mm