



OIL & NATURAL GAS

GEOLOGIST'S REPORT  
DRILL TIME &  
SAMPLE LOG

COMPANY: COBALT ENERGY, LLC  
LEASE: Bonita Unit 'A' #1-30  
FIELD: Wildcat

LOCATION: 399' FNL & 2394' FEL  
SEC: 30 TWP: 6S RGE: 25W  
COUNTY: Graham STATE: KS

CONTRACTOR: Murfin Drilling Co., Rig #24  
SPUD: 08/13/18 COMP: 08/24/18  
RTD: 9339' LTD: 3938'

MUD UP: 3100' TYPE MUD: Chemical  
SAMPLES SAVED FROM: 3400' to RTD  
DRILLING TIME KEPT FROM: 3400' TO RTD  
SAMPLES EXAMINED FROM: 3400' TO RTD

GEOLOGICAL SUPERVISION FROM: 3602' to RTD  
GEOLOGIST ON WELL: Corey N. Baker

FORMATION TOPS  
Anhydrite: 2185 (+435)  
Base of Anhydrite: 2220 (+400)  
Topeka: 3500 (-880)  
Heebner: 3657 (-1037)  
Lansing: 3696 (-1074)  
Stark: 3845 (-1229)  
BKC: 3883 (-1263)  
LTD/RTD: 3938 (-1318)

ELEVATIONS  
KB: 2620'  
GL: 2615'  
Measurements Are All From: KB  
CASING: NA  
Conductor: NA  
Surface: 8 5/8" @ 389'  
Production: NA

Electrical Surveys  
Dial Induction, Neutron-Density & Microlog  
Pioneer Energy Services

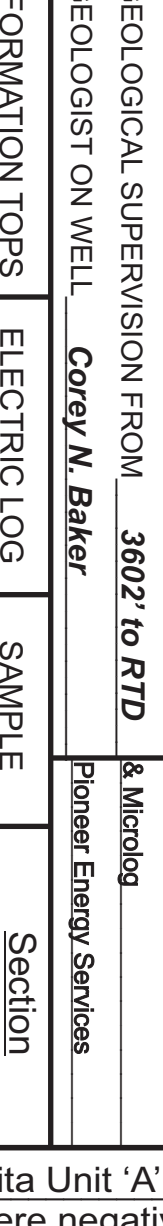


Table with 2 columns: LITHOLOGY, DEPTH. Shows lithological columns and depth scale from 2150 to 3950 feet.

REMARKS The Bonita Unit 'A' #1-30 had several shows throughout the Lansing/KC but DST's were negative for commercial production. The well will be converted to a SWDW in the Cedar Hills.

Respectfully Submitted,  
Corey Baker  
Vice President - Exploration  
Cobalt Energy, LLC

API #15-065-24152-00-00

LEGEND

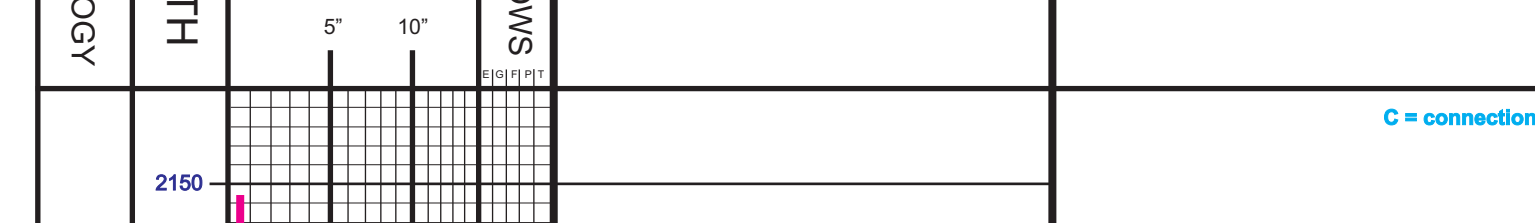


Table with 4 columns: LITHOLOGY, DEPTH, OIL SHOWS, SAMPLE DESCRIPTION, REMARKS. Includes depth scale and sample descriptions for Anhydrite and Base of Anhydrite.

Skip drilling time from 2250-3400', start sample descriptions @ 3500'

Main table with 4 columns: LITHOLOGY, DEPTH, OIL SHOWS, SAMPLE DESCRIPTION, REMARKS. Contains detailed sample descriptions and DST data for Heebner, Lansing, Stark, and BKC zones.

8/16/18 - MIRT, Spud @ 10:30p.m.  
8/17/18 - 8-5/8" surface casing set @ 389'  
8/18/18 - 7:00 AM Drig @ 1730'  
8/19/18 - 7:00 AM Drig @ 3200'  
8/20/18 - 7:00 AM Drig @ 3490'  
8/21/18 - 7:00 AM 3732' on bottom w/DST #1  
8/22/18 - 7:00 AM 3790' circulating on bottom following DST #2  
8/23/18 - 7:00 AM 3880' TOOH for DST #4  
8/24/18 - 7:00 AM LDDP, prepare to set 5.5" casing for Cedar Hills disposal

DST #1 (3706'-3732') Lansing 'C'  
Open 30" Shut-in 45" Open 60" Shut-in 90"  
1st Open: Fair blow, built to B.O.B in 11"  
ISI: No return blow  
2nd Open: Weak blow, built to 1/4".  
FSI: No return blow  
Rec: 30' Oil Cut Mud (10% oil, 90% mud)  
IFP: 18-25#  
FFP: 28-32#  
SIP: 688-698#

DST #2 (3730'-90') Lansing 'D-G'  
Open 30" Shut-in 45" Open 60" Shut-in 90"  
1st Open: Fair blow, built to B.O.B in 11"  
ISI: No return blow  
2nd Open: Fair blow, built to B.O.B. in 21"  
FSI: No return blow  
Rec: 15' Clean Oil  
521' Muddy Water (35% mud, 65% water)  
536' Total Recovery  
IFP: 39-163#  
FFP: 176-263#  
SIP: 922-935#

DST #3 (3788'-3850') Kansas City 'H-I'  
Open 30" Shut-in 45" Open 60" Shut-in 90"  
1st Open: Weak blow, built to 4"  
ISI: No return blow  
2nd Open: Weak blow, built to 4"  
FSI: No return blow.  
Rec: 31' Clean Oil  
120' Watery Mud (10% water, 90% mud)  
151' Total Recovery  
IFP: 22-50#  
FFP: 59-88#  
SIP: 1100-1056#

DST #4 (3846'-80') Kansas City 'K & L'  
Open 30" Shut-in 30" Open 2" Shut-in 2"  
1st Open: Weak surface blow throughout.  
ISI: No return blow.  
2nd Open: No blow.  
FSI: No return blow.  
Rec: 15' Mud  
IFP: 20-22#  
FFP: 25-25#  
SIP: 68-50#

Table with 4 columns: LITHOLOGY, DEPTH, OIL SHOWS, SAMPLE DESCRIPTION, REMARKS. Includes DST charts and lithology data for the lower section of the well.

Company: COBALT ENERGY, LLC Elevation: 2620' KB  
Lease: Bonita Unit 'A' #1-30  
Location: 399' FNL & 2394' FEL SEC. 30 TWP 6S RGE 25W  
County: Graham State: Kansas