

# Sean Deenihan

## Petroleum Geologist

### GEOLOGIST'S REPORT

#### DRILLING TIME AND SAMPLE LOG

COMPANY **Triple Crown Operating, LLC**  
 LEASE **Epsilon #1-24**  
 FIELD **Wildcat**  
 LOCATION **2227' FSL & 630' FEL**  
 SEC **24** TWPSP **14 S** RGE **28 W**  
 COUNTY **Gove** STATE **Kansas**  
 CONTRACTOR **W.W. Drilling Rig #8**  
 SPUD **10/19/18** COMP **10/27/18**  
 RTD **4410'** LTD **4402'**  
 MUD UP \_\_\_\_\_ TYPE MUD **Chemical**  
 SAMPLES SAVED FROM **3600'** TO RTD  
 DRILLING TIME KEPT FROM **3600'** TO RTD  
 SAMPLES EXAMINED FROM **3600'** TO RTD  
 GEOLOGICAL SUPERVISION FROM **3650'**  
 REFERENCE WELL \_\_\_\_\_

#### ELEVATIONS

KB 2526'  
 DF \_\_\_\_\_  
 GL 2521'

Measurements Are All From Kelly Busting

#### CASING

CONDUCTOR SURFACE **8-5/8"** at 225'  
 PRODUCTION \_\_\_\_\_

#### ELECTRICAL SURVEYS

Pioneer Wireline  
 CN/D/D/L, MIC/SON

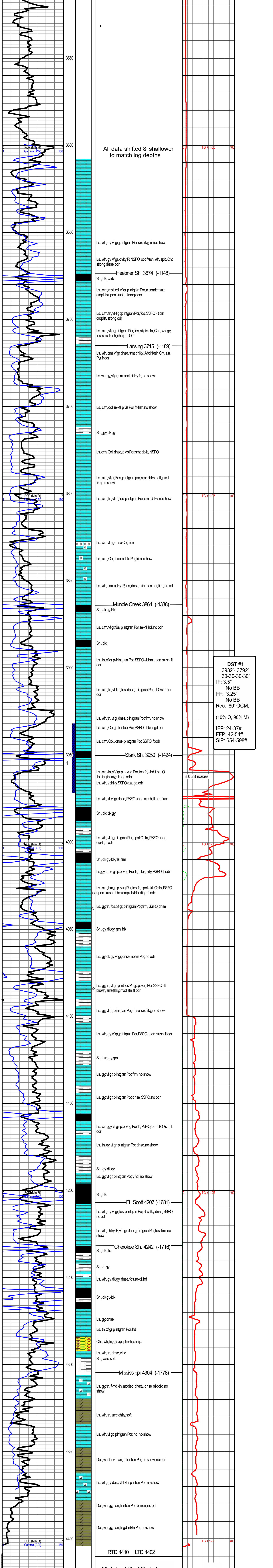
#### Formation

Formation	Sample Tops	E-log Tops	Struct Pos.
B/Ambidrive		2007' (+519)	
Heebner Sh.		3674' (-1148)	
Lansing		3715' (-1447)	
Stark		3950' (-1424)	
BKC		4008' (-1482)	
Ft. Scott		4207' (-1681)	
Mississippi		4304' (-1778)	

REMARKS Based on sample, log, and DST analysis, the Epsilon #1-24 was plugged and abandoned.

Respectfully Submitted,

Sean P. Deenihan



**DST #1**  
 3932'- 3792'  
 30-30-30-30"  
 IF: 3.5"  
 No BB  
 FF: 3.25"  
 No BB  
 Rec: 80' OCM,  
 (10% O, 90% M)  
 IFF: 24-37#  
 FFP: 42-54#  
 SIP: 654-598#