



Fall & Associates
 Stake and Elevation Service
 P.O. Box 222
 Pretty Prairie, KS. 67570
 785-243-7506

Date 11-27-18

Invoice Number 1124181

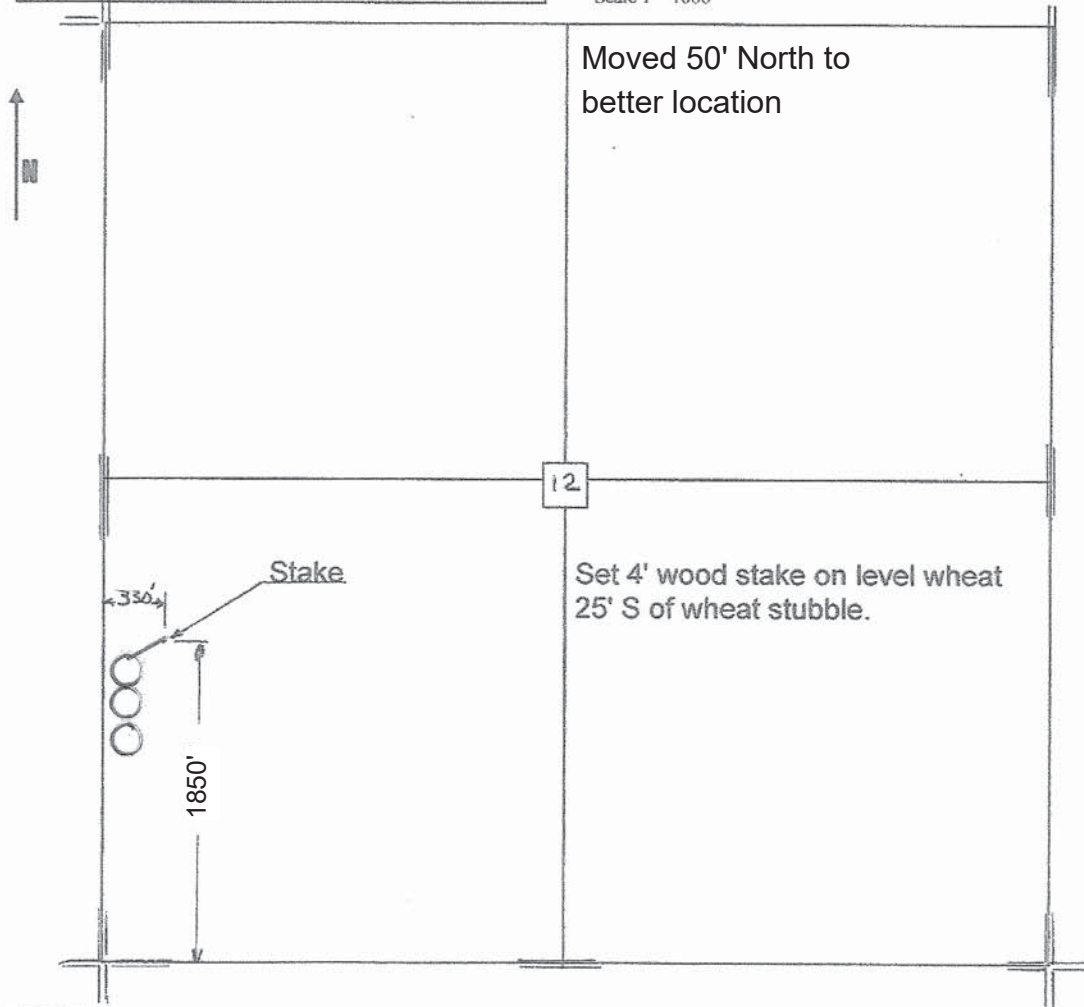
MURFIN DRILLING	1-12			CWA 'F'
Operator	Number			Farm Name
Cheyenne-KS	12	2s	37w	1850' FSL 330'FWL
County-State	S	T	R	Location

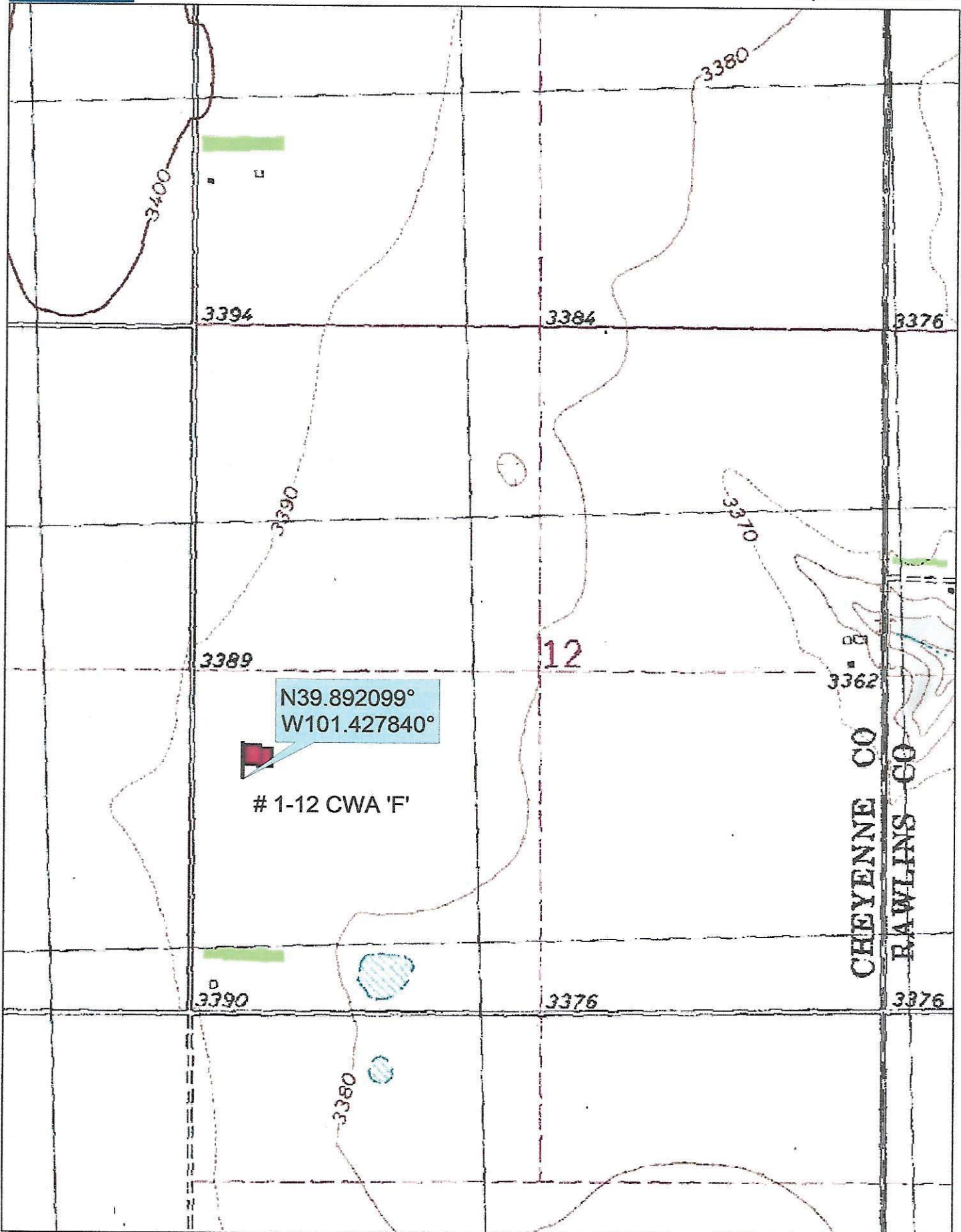
Murfin Drilling
 250 N. Water
 Suite 300
 Wichita, KS. 7202

Elevation 3387 Gr.

Ordered By: Shauna

Scale 1"=1000'

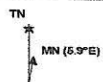




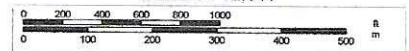
Data use subject to license.

© DeLorme. Topo North America™ 9.

www.delorme.com



Scale 1 : 12,000



1" = 1,000.0 ft

Data Zoom 13-1