

GEOLOGIST'S REPORT DRILLING TIME AND SAMPLE LOG

COMPANY HABIT PETROLEUM LLC
ELEVATIONS

LEASE HEM#2
KB 2055

FIELD
DE

LOCATION 850 FNL 2310 FWL
GL 2050

SEC 33 TWP 14S RGE 18W
Measurements Are All From

COUNTY ELLIS STATE KS
CASING SURFACE @ 219'

CONTRACTOR WHITE KNIGHT DRILG.
PRODUCTION

SPUD 9-1-18 COMP 9-7-18
ELECTRICAL SURVEYS

RTD 3698 LTD 3697
DIL/ND/MICRO

MUD UP 2900' TYPE MUD CHEM.

SAMPLES SAVED FROM 2900' TO TD.

DRILLING TIME KEPT FROM 2900' TO TD.

SAMPLES EXAMINED FROM 2900' TO TD.

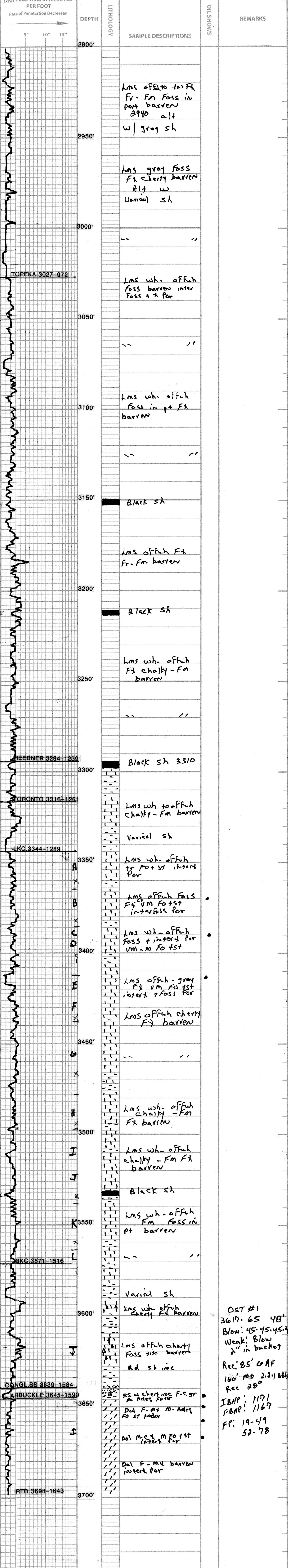
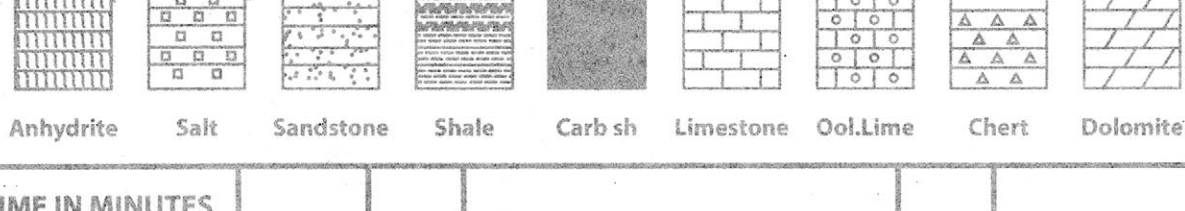
GEOLOGICAL SUPERVISION FROM 2900' TO TD.

GEOLOGIST ON WELL 4TH-6TH

FORMATION TOPS	LOG	SAMPLES
ANHY TOPEKA	1294-78.821 3022-987	1295-81.820 3027-972
HEEBNER	3292-1237	3294-1239
TORONTO	3313-1258	3316-1261
LKC	3342-1287	3344-1289
BKC	3569-1514	3571-1516
C ONGL SS	3639-1584	3639-1584
ARBUCKLE	3645-1590	3645-1590
RTD	3697-1642	3698-1643

REMARKS: All parties involved recommended that pipe be set on this well. The Arbutk, Congl and "B" should be tested initially. The CD, and A should be tested before abandoning. respectfully submitted

LEGEND



DST #1
3617-65 48"
Blow: 45-45-45-45
Weak: Blow 2" in bucket
Rec: 85' CAF
160' MD 2.211 685
Rec 28"
IBHP: 1171
FBHP: 1167
FP: 19-49
52-78