

GEOLOGIST'S REPORT DRILLING TIME AND SAMPLE LOG

COMPANY CASTLE RESOURCES INC.
LEASE HOLSTE #1
ELEVATIONS
KB 2975

FIELD WC
LOCATION NW-NW-NW
GL 2970
DF

SEC 23 TWP 2S RGE 33W
COUNTY RAWLINS STATE KS
CONTRACTOR WHITE KNIGHT DRILG.
SPUD 1-20-19 COMP 1-27-19
RTD 4562 LTD 4562
MUD UP 3600 TYPE MUD CHEM.

MEASUREMENTS ARE ALL FROM KB
SURFACE @ 256
PRODUCTION
ELECTRICAL SURVEYS
DILIND MICRO
TO TD.
TO TD.
TO TD.

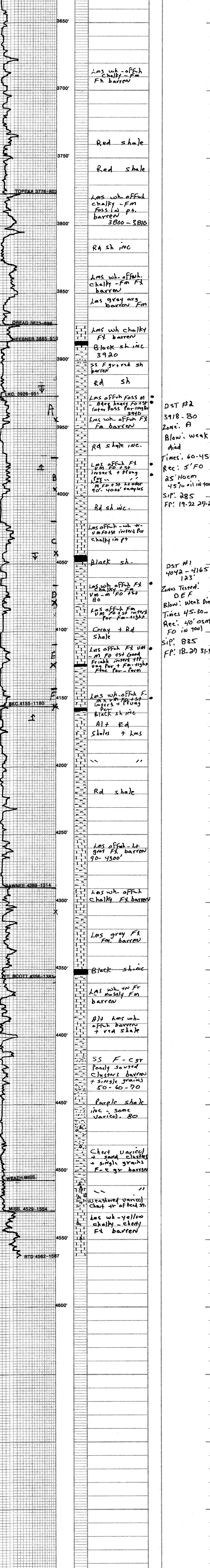
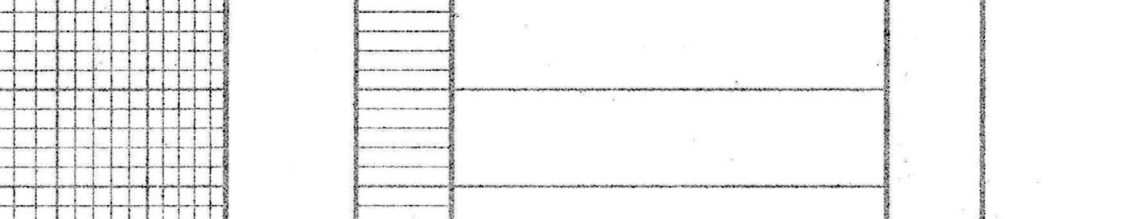
DRILLING TIME KEPT FROM 3600'
SAMPLES EXAMINED FROM 3700'
GEOLOGICAL SUPERVISION FROM 3700'
GEOLOGIST ON WELL 24TH-27TH
TO ID.

FORMATION TOPS	LOG	SAMPLES
ANHY	2758-217	2758-217
TOPEKA	3776-803	3776-801
OHEAID	3878-901	3878-898
HEBNER	3886-911	3886-910
	3930-933	3929-930
LKC	3926-910	3926-910
BKC	4104-1179	4103-1170
LAWNEE	4289-1314	4289-1314
FAWNEE	4356-1381	4356-1381
WEATH. MISS.	4529-1554	4529-1554
MISS.	4529-1554	4529-1554
RTD	4562-1567	4562-1567

--	--	--	--	--	--	--	--	--	--

REMARKS

LEGEND



CONTRACTOR _____ LOCATION _____
LEASE _____ IP _____ SEC _____ TWP _____ RNG _____
ELEVATION _____ RTD _____ COUNTY _____ STATE _____