

SE/4-13 - HBP
Op: Ritchie Exploration
P.O. Box 783188
Wichita, KS 67278
Lease: Schlessinger

NOBLE ENERGY, INC.
May 28, 2011
1/2 mile surrounding
York Marchand 4:
SWSWNE/4, Sec. 24-20S-12W
Barton County, Kansas

SW/4-13 - HBP
Op: L. D. Drilling
7 SW 26 Ave.
Great Bend, KS 67530
Lease: Marchand

SW/4-18 - HBP
Op: Ritchie Exploration
P.O. Box 783188
Wichita, KS 67278
Lease: Schartz D -
N/SW/4 & Peter Schartz
in S/2SW/4-18

NW/4-24 - HBP
Op: Zenith Drilling
P.O. Box 780428
Wichita, KS 67278
Lease: Scheufler A

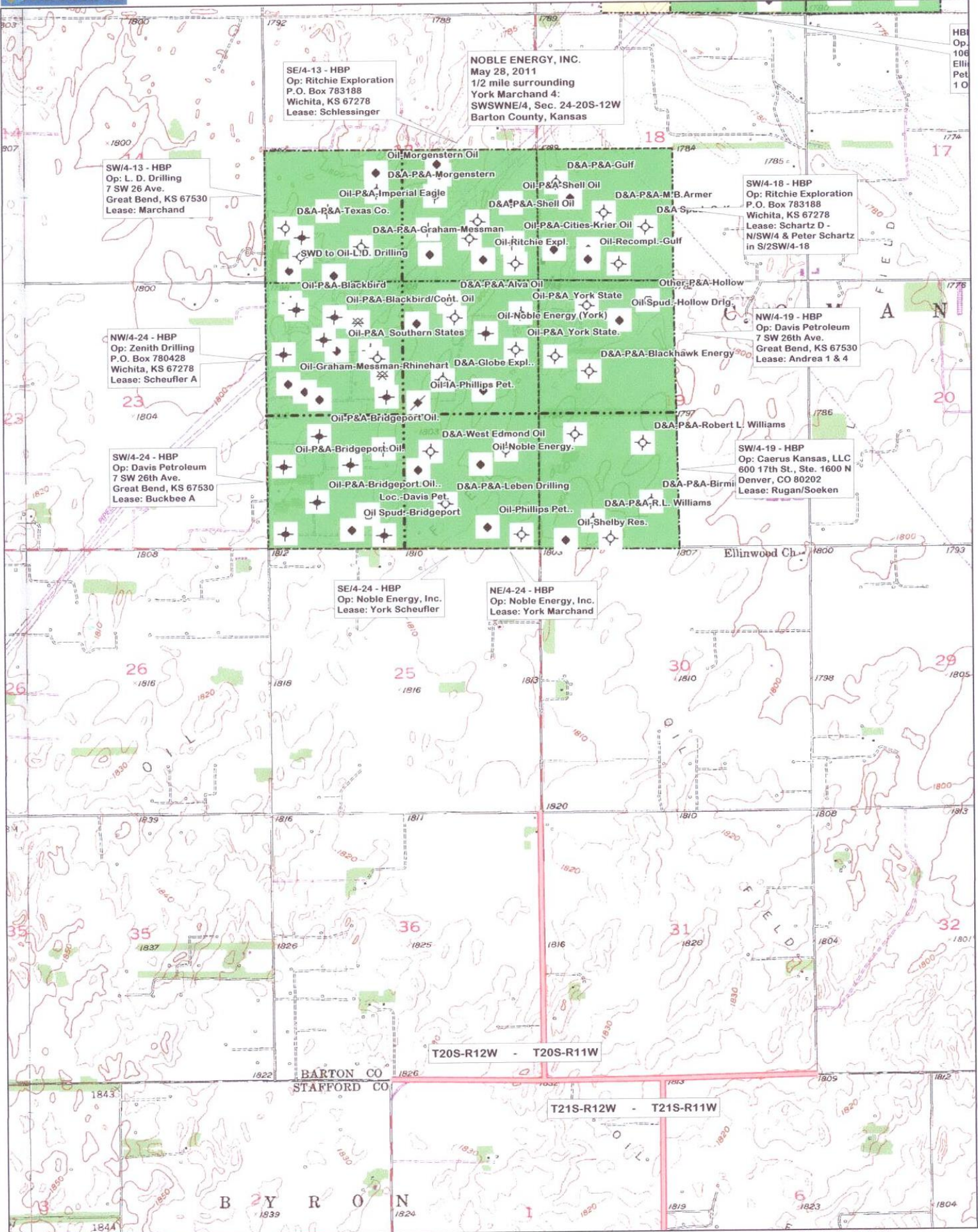
NW/4-19 - HBP
Op: Davis Petroleum
7 SW 26th Ave.
Great Bend, KS 67530
Lease: Andrea 1 & 4

SW/4-24 - HBP
Op: Davis Petroleum
7 SW 26th Ave.
Great Bend, KS 67530
Lease: Buckbee A

SW/4-19 - HBP
Op: Caerus Kansas, LLC
600 17th St., Ste. 1600 N
Denver, CO 80202
Lease: Rugan/Soeken

SE/4-24 - HBP
Op: Noble Energy, Inc.
Lease: York Scheufler

NE/4-24 - HBP
Op: Noble Energy, Inc.
Lease: York Marchand



Data use subject to license.

© DeLorme. XMap® 7

www.delorme.com

