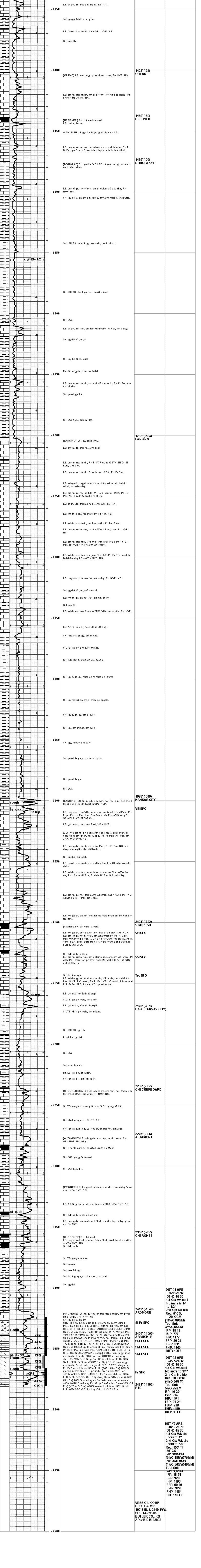


GEOLOGIST'S REPORT
DRILLING TIME AND SAMPLE LOG

COMPANY <u>VESS OIL CORPORATION</u>		ELEVATIONS	
LEASE <u>BLOIR 'A' #33</u>		KB <u>1379'</u> GL <u>1373'</u>	
FIELD <u>EL DORADO</u>		Measurements Are All From KB	
LOCATION <u>400' FNL & 2140' FWL</u>		API <u>15-015-23892-0000</u>	
SECTION <u>13</u> TOWNSHIP <u>26S</u> RANGE <u>04E</u>			
COUNTY <u>BUTLER</u> STATE <u>KANSAS</u>			
CONTRACTOR <u>C&G DRG RIG #1</u>		CASING	
SPUD <u>04/28/2011</u> COMP <u>05/05/2011</u>		SURFACE <u>256' 8-5/8" 23#ft</u>	
RTD <u>2481' (-1102)</u> LTD <u>2479' (-1100)</u>		LS csg set @ <u>263' KB</u>	
LOG-TECH: DIL, ELECTRICAL SURVEYS		PRODUCTION <u>57 jts 5-1/2" 15.5#ft</u>	
CNL/CDL, MEL		J-55 csg set @ <u>2445' KB</u>	

FORMATION TOPS	LOG	SAMPLES	CHRONOLOGY
OREAD	1400' (21)	1402' (23)	0427/11- MIRR Drill bathole
HEEBNER	1437' (88)	1439' (80)	0428/11- Spud 12-1/4" hole @ 7:30 AM. Lost circ below 100', TD 12-1/4" hole @ 7:30 PM @ 265' Set 256' of 8-5/8" 23#ft LS casing
DOUGLAS SH	1476' (96)	1476' (96)	2 cement baskets on top sat @ 265' LB. CONSOLIDATED: 160 SX Cires & 3% CC. Cmt circs but fell back down. Top off w/35 SX, plug down @ 9:00 PM. Top done @ 05 PM
LANSING	1702' (323)	1702' (323)	0429/11- 265' Drill under surface @ 7:30 AM
KANSAS CITY	1997' (619)	1998' (619)	0430/11- Cir @ 1265. Survey @ 967' = 14'
STARK SH	2101' (722)	2101' (722)	05/01/11- Dita @ 1910', MW 9.3, VIS 36, LCM 2
BASE KANSAS CITY	2169' (790)	2170' (791)	05/02/11- Dita @ 2182', Bit trips @ 2008 & 2160. SHS @ 2008 = 1/2, MW 9.3, VIS 39, WL 9.8, LCM 3#
CHECKERBOARD	2234' (856)	2236' (857)	05/03/11- Cir @ 2456, short trip for DST #1
ALTAMONT	2274' (895)	2275' (895)	SHS 2466' = 34'
CHEROKEE	2354' (975)	2356' (957)	05/04/11- 2466' Running DST #2. Drill on and run DST #3, MW 9.4, VIS 56, WL 9.2, LCM 3#
ARDMORE	2417' (1038)	2419' (1040)	05/05/11- Running Logs @ RTD 2481'
ARBUCKLE	2439' (1059)	2439' (1060)	05/06/11- Set 57' ls 5-1/2" 15.5#ft J-55 casing- 2466.07', packer shoe- 2.50', Total 2468.57', tag bottom @ 2481', pick up 36' and circ. Pull up to 2481'. Set packer shoe w/ 1800# Circ. 6 centralizers, 2 baskets. Consolidated Services: 500 gal mud flush. 125 cc Thicket 60#k gypseal- good circ. Displace plug 50 BPM. caught pressure @ 31 bbls. lift pressure to 600#. Land plug @ 1200# @ 4:40 pm, it held.
LYD/RTD	2479' (1100)	2481' (1102)	(by Casey Coas, Engineer, VDC)

REMARKS:
Log tops by Paul Ramondetta, Geologist (VDC)



VESS OIL CORP
BLOIR 'A' #33
400' FNL & 2140' FWL
SEC 13-26S-04E
BUTLER CO., KS
API#15-015-23892