



Spud: 11/11/2011

Current

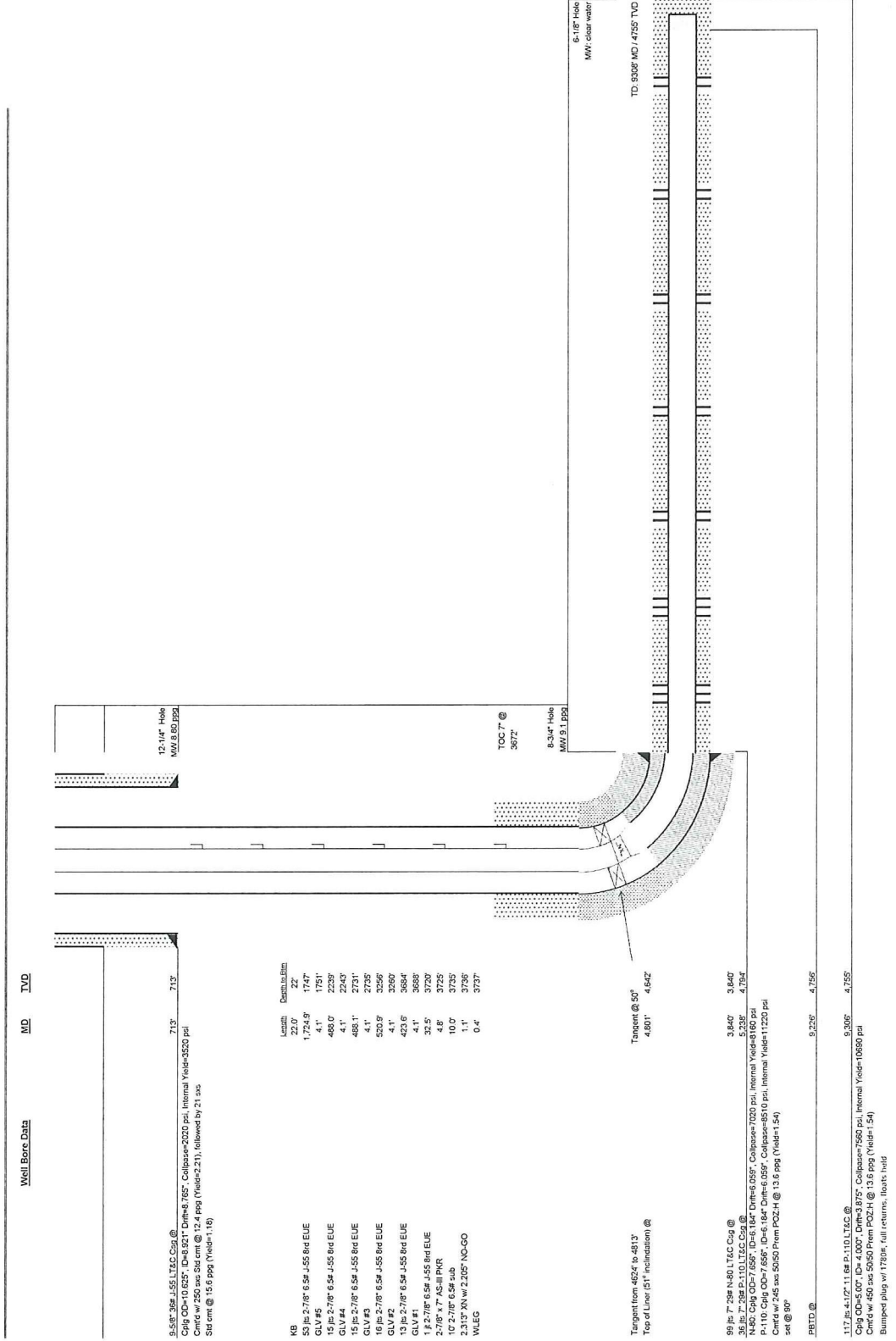
Wellbore Schematic

Field: Waldron West
 County: Harper
 State: KS
 Well: Cynthia 1-14H
 Location: SEC 14, T19P 35S, R3E 6W
 Elevations: 1247 KB, 1225 GL

Original Completion ()	Current (X)	Proposed
-------------------------	-------------	----------

15-077-21754-01-00
 API No.

MD TVD



Well Bore Data

Location	Depth (ft)	MD (ft)	TVD (ft)
KB	22.0'	22'	713'
53 JS 2-7/8" 6.5# J-55 Rld EUE	1,724.5'	1747'	
GLV #5	4.1'	1751'	
15 JS 2-7/8" 6.5# J-55 Rld EUE	488.0'	2239'	
GLV #4	4.1'	2243'	
15 JS 2-7/8" 6.5# J-55 Rld EUE	488.1'	2731'	
GLV #3	4.1'	2735'	
15 JS 2-7/8" 6.5# J-55 Rld EUE	53.9'	2789'	
GLV #2	4.1'	2800'	
15 JS 2-7/8" 6.5# J-55 Rld EUE	423.6'	3264'	
GLV #1	4.1'	3268'	
1 1/2-2-7/8" 6.5# J-55 Rld EUE	32.5'	3700'	
2-7/8" x 7" AS-III PKR	4.8'	3725'	
1 1/2-2-7/8" 6.5# sub	10.0'	3735'	
2.312" XN w 2.205" NO-GO	1.1'	3736'	
WLEG	0.4'	3737'	

9.58" 39# J-55 LT&C Csg @
 Cplg OD=10.625", ID=8.921", Dtm=8.785", Collapse=2020 psi, Internal Yield=3520 psi
 Cmt'g w 250 sac SHI cmt @ 12.4 ppg (Yield=2.21), followed by 21 sac
 SHI cmt @ 15.6 ppg (Yield=1.16)

TOC 7" @ 3012'
 6-3/4" Hole MW 8.1 PPS
 5-1/8" Hole MW clear water
 TD: 9338' MD, 4755' TVD

Tangent from 482.4 to 481.3'
 Top of Liner (51' inclination) @ 4801' - 4.642'
 Tapered @ 50'
 9.256' 4.756'
 9.840' 9.840'
 5.238' 4.794'
 9.840' 9.840' T&C Csg @
 36 JS 7" 28# P-110 LT&C Csg @
 N-80 Cplg OD=7.656", ID=6.184", Dtm=6.059", Collapse=7020 psi, Internal Yield=8160 psi
 P-110 Cplg OD=7.656", ID=6.184", Dtm=6.059", Collapse=8510 psi, Internal Yield=11220 psi
 Cmt'g w 245 sac 50/80 Prem POC-H @ 13.6 ppg (Yield=1.54) set @ 90'
 BRTO @
 1.17 JS 4 1/2" 11.6# P-110 LT&C @ 9.305' 4.755'
 Cplg OD=5.00", ID=4.000", Dtm=3.875", Collapse=7650 psi, Internal Yield=10650 psi
 Cmt'g w 450 sac 50/80 Prem POC-H @ 13.6 ppg (Yield=1.54)
 Bumped plug w/ 1780# full returns, floats hold