



DRILL STEM TEST REPORT

Prepared For: **FG Holl Company LLC**

9431 East Central
Suite 100
Wichita, Kansas 67206+2563

ATTN: Frank Greenbaum

Price Trust 1-28

28/20S/19W/Pawnee

Start Date: 2012.01.29 @ 16:10:00

End Date: 2012.01.29 @ 20:14:00

Job Ticket #: 18824 DST #: 4

Superior Testers Enterprises LLC
PO Box 138 Great Bend KS 67530
1-800-792-6902

Printed: 2012.01.29 @ 18:24:58



DRILL STEM TEST REPORT

FG Holl Company LLC
 9431 East Central
 Suite 100
 Wichita, Kansas 67206+2563
 ATTN: Frank Greenbaum

28/20S/19W/Pawnee

Price Trust 1-28

Job Ticket: 18824

DST#: 4

Test Start: 2012.01.29 @ 16:10:00

GENERAL INFORMATION:

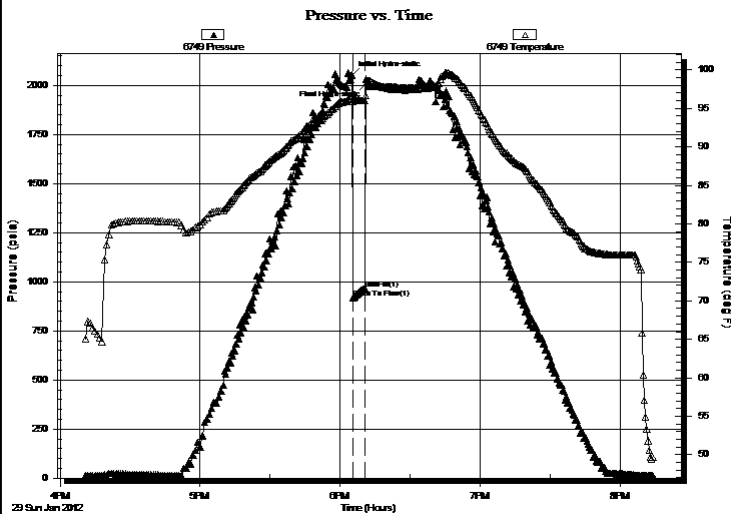
Formation: **Cherokee Sand**
 Deviated: No Whipstock: ft (KB)
 Time Tool Opened: 18:05:30
 Time Test Ended: 20:14:00
 Interval: **4188.00 ft (KB) To 4197.00 ft (KB) (TVD)**
 Total Depth: 4197.00 ft (KB) (TVD)
 Hole Diameter: 7.88 inches Hole Condition: Fair
 Test Type: Conventional Bottom Hole (Initial)
 Tester: Ken Swinney
 Unit No: 3325 Great Bend/100
 Reference Elevations: 2190.00 ft (KB)
 2182.00 ft (CF)
 KB to GR/CF: 8.00 ft

Serial #: 6749

Outside

Press @ Run Depth: psia @ 4194.00 ft (KB) Capacity: 5000.00 psia
 Start Date: 2012.01.29 End Date: 2012.01.29 Last Calib.: 2012.01.29
 Start Time: 16:10:00 End Time: 20:14:00 Time On Btm: 2012.01.29 @ 18:05:00
 Time Off Btm: 2012.01.29 @ 18:11:30

TEST COMMENT: 1ST Open 5 Minutes/Very strong blow /Blow to bottom of bucket in 10 sec/Gas to surface in 1 minute



PRESSURE SUMMARY

Time (Min.)	Pressure (psia)	Temp (deg F)	Annotation
0	2052.16	96.36	Initial Hydro-static
1	919.13	95.92	Open To Flow (1)
6	965.66	96.03	Shut-In(1)
7	2016.56	98.39	Final Hydro-static

Recovery

Length (ft)	Description	Volume (bbl)
30.00	Mud 100%	0.44

Gas Rates

	Choke (inches)	Pressure (psia)	Gas Rate (Mcf/d)
First Gas Rate	1.00	209.68	6028.02



DRILL STEM TEST REPORT

TOOL DIAGRAM

FG Holl Company LLC

28/20S/19W/Pawnee

9431 East Central
Suite 100
Wichita, Kansas 67206+2563
ATTN: Frank Greenbaum

Price Trust 1-28

Job Ticket: 18824

DST#: 4

Test Start: 2012.01.29 @ 16:10:00

Tool Information

Drill Pipe:	Length: 4181.00 ft	Diameter: 3.88 inches	Volume: 61.14 bbl	Tool Weight:	2000.00 lb
Heavy Wt. Pipe:	Length: 0.00 ft	Diameter: 0.00 inches	Volume: 0.00 bbl	Weight set on Packer:	20000.00 lb
Drill Collar:	Length: 0.00 ft	Diameter: 0.00 inches	Volume: 0.00 bbl	Weight to Pull Loose:	70000.00 lb
			<u>Total Volume: 61.14 bbl</u>	Tool Chased	0.00 ft
Drill Pipe Above KB:	15.00 ft			String Weight: Initial	43000.00 lb
Depth to Top Packer:	4188.00 ft			Final	43000.00 lb
Depth to Bottom Packer:	ft				
Interval between Packers:	9.00 ft				
Tool Length:	31.00 ft				
Number of Packers:	1	Diameter: 6.75 inches			

Tool Comments:

Tool Description	Length (ft)	Serial No.	Position	Depth (ft)	Accum. Lengths
Shut In Tool	5.00			4171.00	
Hydraulic Tool	5.00			4176.00	
Jars	5.00			4181.00	
Safety Joint	2.00			4183.00	
Packer	5.00			4188.00	22.00 Bottom Of Top Packer
Anchor	4.00			4192.00	
Recorder	1.00	6748	Inside	4193.00	
Recorder	1.00	6749	Outside	4194.00	
Bullnose	3.00			4197.00	9.00 Anchor Tool
Total Tool Length:	31.00				



DRILL STEM TEST REPORT

FLUID SUMMARY

FG Holl Company LLC

28/20S/19W/Pawnee

9431 East Central
Suite 100
Wichita, Kansas 67206+2563
ATTN: Frank Greenbaum

Price Trust 1-28

Job Ticket: 18824

DST#: 4

Test Start: 2012.01.29 @ 16:10:00

Mud and Cushion Information

Mud Type: Gel Chem
Mud Weight: 9.00 lb/gal
Viscosity: 47.00 sec/qt
Water Loss: 7.19 in³
Resistivity: ohm.m
Salinity: 3800.00 ppm
Filter Cake: 1.00 inches

Cushion Type:
Cushion Length: ft
Cushion Volume: bbl
Gas Cushion Type:
Gas Cushion Pressure: psia

Oil API: deg API
Water Salinity: ppm

Recovery Information

Recovery Table

Length ft	Description	Volume bbl
30.00	Mud 100%	0.439

Total Length: 30.00 ft Total Volume: 0.439 bbl

Num Fluid Samples: 0

Num Gas Bombs: 0

Serial #:

Laboratory Name:

Laboratory Location:

Recovery Comments:



DRILL STEM TEST REPORT

GAS RATES

FG Holl Company LLC

28/20S/19W/Pawnee

9431 East Central
Suite 100
Wichita, Kansas 67206+2563
ATTN: Frank Greenbaum

Price Trust 1-28

Job Ticket: 18824

DST#: 4

Test Start: 2012.01.29 @ 16:10:00

Gas Rates Information

Temperature: 59 (deg F)
Relative Density: 0.65
Z Factor: 0.8

Gas Rates Table

Flow Period	Elapsed Time	Choke (inches)	Pressure (psia)	Gas Rate (Mcf/d)
1	5	1.00	209.68	6028.02

Serial #: 6748

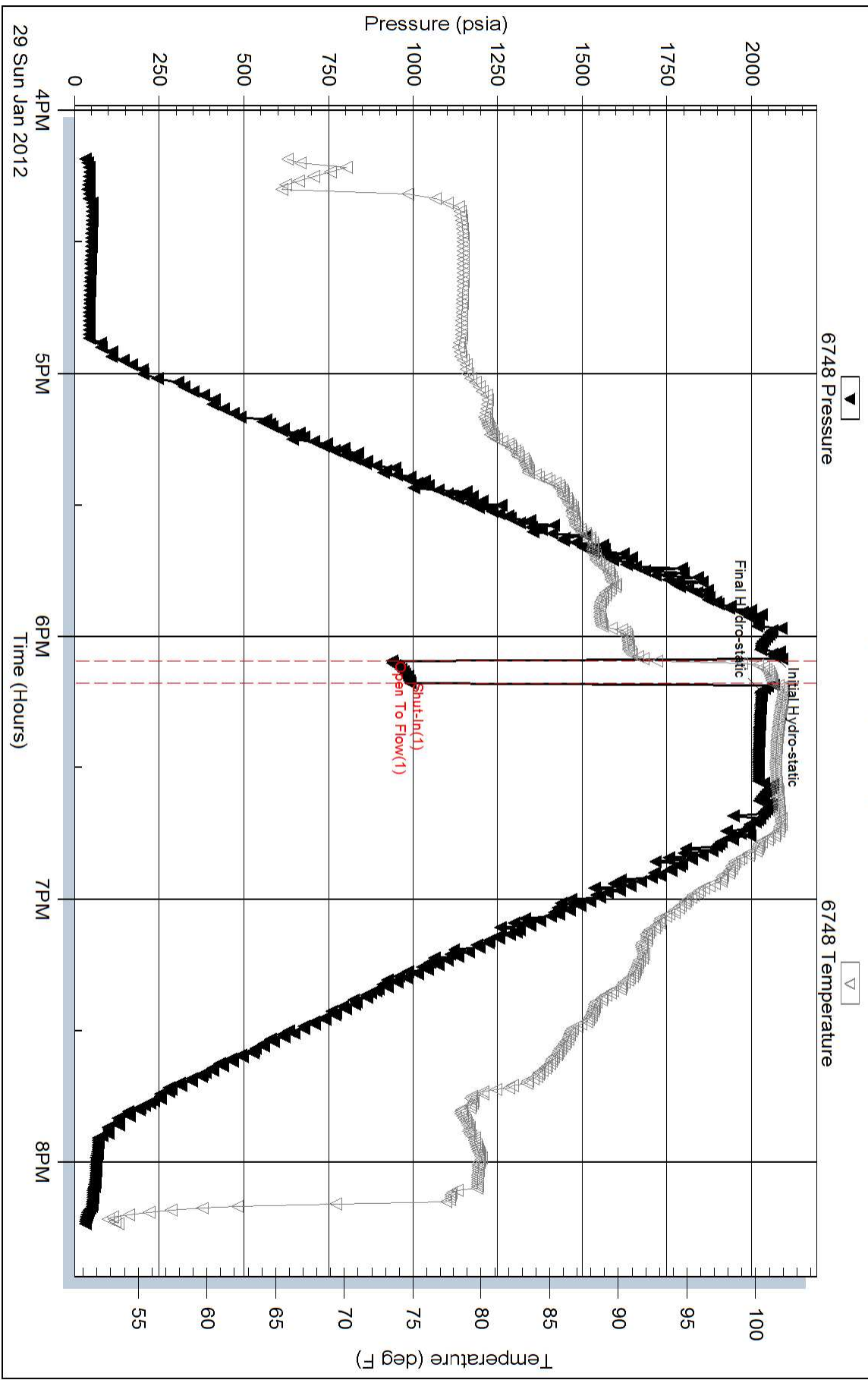
Inside

FG Holl Company LLC

Price Trust 1-28

DST Test Number: 4

Pressure vs. Time



Superior Testers Enterprises LLC

Ref. No: 18824

Printed: 2012.01.29 @ 18:24:59

