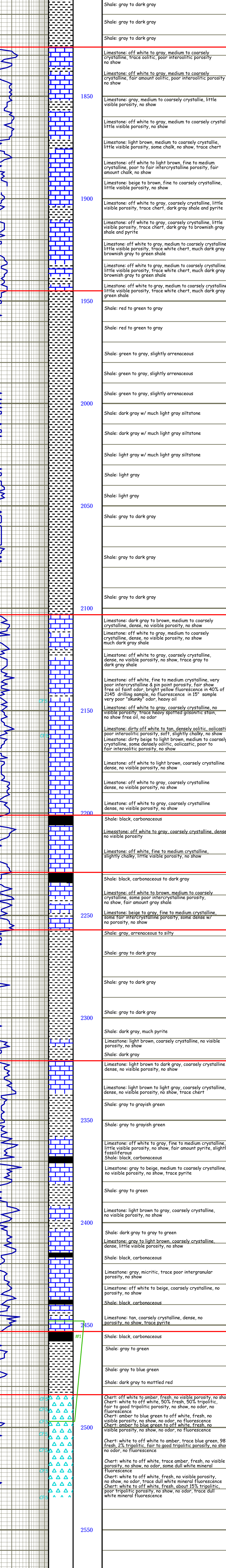


COMPANY	Noble Petroleum, Inc.	ELEVATION	
LEASE	Artz #1	K.B.	1339
FIELD	King	D.F.	
LOCATION	837 FNL & 1,768 FWL	G.L.	1333
SEC	20	TWSP	24S
RGE	4E	DEPTH MEASURED FROM	KB
COUNTY	Butler	STATE	Kansas
CONTRACTOR	C&G Drilling, Rig #1	Surface	8.58' @ 253' W/125.8'
SPUD	6-22-12	COMP	6-27-12
SAMPLES SAVED FROM	1800'	TO	RTD

FORMATION	SAMPLE	E LOG	DATUM
Ordal		-178	-186
Hedhner		-218	-223
Douglas		-254	-268
Brown		-298	-303
Lansing	1826	-487	-494
Base Lansing	1945	-606	-609
KC	2103	-764	-767
Stark	2201	-862	-865
Hushpuckney	2229	-890	-894
BKC	2257	-918	-921
Marmaton	2321	-982	-991
Cherokee	2453	-1114	-1115
Mississippian	2484	-1148	-1149
KTD	2534	-1195	-1192

REFERENCE WELLS
 A.C.N.E. SW 1/4, 24S-4E, Tomlinson, Henry Creek Farms
 B.C.N.E. NE 1/4, 24S-4E, Abaddon, Mertz #1
 C.C.N.E. NE 1/4, 24S-3E, Tomlinson, Mertz-Hilman #1



1800	Shale: gray to dark gray
1850	Limestone: off white to gray, medium to coarsely crystalline, trace oolitic, poor interoolitic porosity no show
1900	Limestone: off white to gray, medium to coarsely crystalline, little visible porosity, no show
1950	Limestone: off white to gray, medium to coarsely crystalline, little visible porosity, trace white chert, much dark gray to brownish gray to green shale
2000	Shale: red to green to gray
2050	Shale: light gray w/ much light gray siltstone
2100	Limestone: dark gray to brown, medium to coarsely crystalline, dense, no visible porosity, no show
2150	Limestone: off white to gray, coarsely crystalline, dense, no visible porosity, no show, trace gray to dark gray shale
2200	Shale: black, carbonaceous
2250	Limestone: off white to brown, medium to coarsely crystalline, some poor intercrystalline porosity, no show, fair amount gray shale
2300	Shale: gray to dark gray
2350	Limestone: light brown to dark gray, coarsely crystalline, dense, no visible porosity, no show
2400	Limestone: gray to light brown, coarsely crystalline, dense, little visible porosity, no show
2450	Limestone: tan, coarsely crystalline, dense, no porosity, trace pyrite
2500	Chert: off white to amber, fresh, no visible porosity, no show
2550	Chert: white to off white, trace amber, fresh, no visible porosity, no show, trace dull white mineral fluorescence

Lansing 1826 -487

Base Lansing 1945 -606

Kansas City 2103 -764




Stark 2201 -862

Hushpuckney 2229 -890

BKC 2257 -918

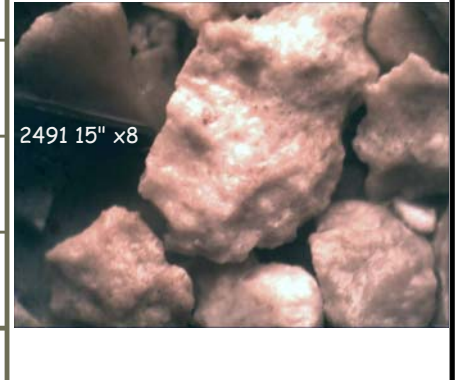
Marmaton 2321 -982

Cherokee 2353 -1014

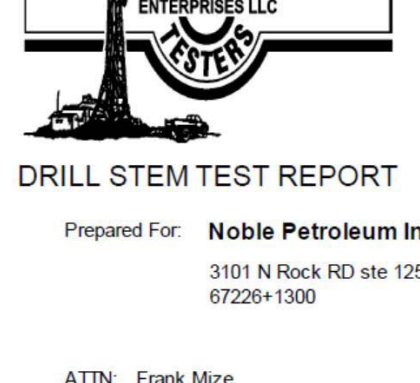
vis 40 wt 9.4 lcm 3.5#

Mississippian 2484 -1145

vis 49 wt 9.4 lcm 3#



Comments:



DRILL STEM TEST REPORT

Prepared For: **Noble Petroleum Inc**
 3101 N Rock RD ste 125 Wichita KS
 67226-1300

ATTN: Frank Mize

Artz #1

20-24s-4e Butler

Start Date: 2012.06.26 @ 11:10:00
 End Date: 2012.06.26 @ 16:47:30
 Job Ticket #: 17354 DST #: 1

Interval:	2448.00 ft (KB) To 2497.00 ft (KB) (TVD)
Total Depth:	2497.00 ft (KB) (TVD)
Hole Diameter:	7.88 inches Hole Condition: Fair

Time (Mn.)	Pressure (psia)	Temp (deg F)	Annotation
0	1262.97	105.25	Initial Hydro-static
1	52.09	105.06	Open To Flow (1)
32	54.34	105.05	Shut-In (1)
60	529.35	105.37	End Shut-In (1)
61	56.11	105.21	Open To Flow (2)
90	58.31	105.38	Shut-In (2)
121	500.27	105.67	End Shut-In (2)
122	1241.89	105.85	Final Hydro-static

Length (ft)	Description	Volume (bbl)
2.00	mud	0.01

