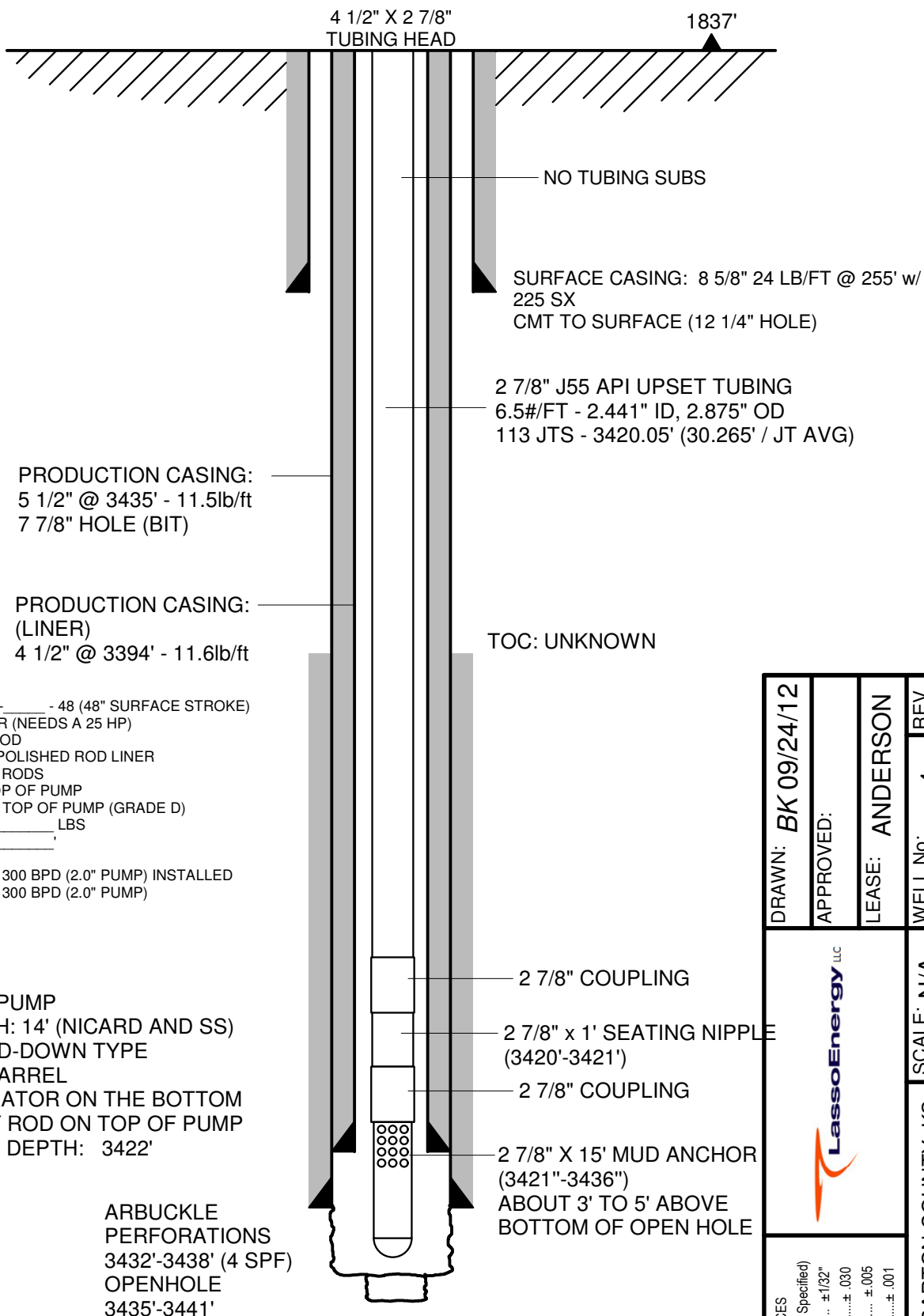


REVISION:	DESCRIPTION:
-----------	--------------

WELL No: 4

REV.



PUMPING UNIT: C - 80 - _____ - 48 (48" SURFACE STROKE)
 20HP ELECTRIC MOTOR (NEEDS A 25 HP)
 1.25" X 16' POLISHED ROD
 1.50" X 8' HARD LINED POLISHED ROD LINER
 3/4" GRADE D SUCKER RODS
 NO SINKER BAR ON TOP OF PUMP
 3/4" X 2' PONY ROD ON TOP OF PUMP (GRADE D)
 TOTAL ROD WEIGHT: _____ LBS
 TOTAL ROD LENGTH: _____'
 MAX. SPEED: 17 SPM
 MAX. DISPLACEMENT: 300 BPD (2.0" PUMP) INSTALLED
 MAX. DISPLACEMENT: 300 BPD (2.0" PUMP)
 NO TUBING ANCHOR

2.00" INSERT PUMP
 PUMP LENGTH: 14' (NICARD AND SS)
 BOTTOM HOLD-DOWN TYPE
 TRAVELING BARREL
 1' GAS SEPERATOR ON THE BOTTOM
 2' X 7/8" PONY ROD ON TOP OF PUMP
 PUMP INTAKE DEPTH: 3422'

ARBUCKLE PERFORATIONS
 3432'-3438' (4 SPF)
 OPENHOLE
 3435'-3441'

TD: 3441.0
 PBTD: 3441.0

DRAWN: BK 09/24/12	APPROVED:	LEASE: ANDERSON	WELL No: 4	REV.
		SCALE: N/A		LOCATION: BARTON COUNTY, KS
		TOLERANCES (Unless Otherwise Specified) Fractional..... ± 1/32" 2 Place Decimal..... ± .030 3 Place Decimal..... ± .005 4 Place Decimal..... ± .001		