

# LITHOLOGY STRIP LOG

## WellSight Systems

Scale 1:240 (5"=100') Imperial

Well Name: Rose #1-6  
Location: 2104' FSL & 1400' FWL, Sec. 6-T27S-R19W, Kiowa Co., KS.  
Licence Number: 15-047-21611-0000 Region: Wildcat  
Spud Date: 7/12/2012 Drilling Completed: 7/23/2012  
Surface Coordinates: 2104' FSL & 1400' FWL, Sec. 6-T27S-R19W

Bottom Hole Same as Above  
Coordinates:  
Ground Elevation (ft): 2252' K.B. Elevation (ft): 2263'  
Logged Interval (ft): 3800' To: 4930' Total Depth (ft): 4930'  
Formation: Mississippian at Total Depth  
Type of Drilling Fluid: Freshwater/Gel to 3121'; Chemical Gel 3121' to 4930'  
Printed by MUD.LOG from WellSight Systems 1-800-447-1534 [www.WellSight.com](http://www.WellSight.com)

### OPERATOR

Company: Strata Exploration, Inc.  
Address: P.O. Box 401  
Fairfield, IL. 62837-0401

### GEOLOGIST

Name: Jon D. Christensen  
Company: Consulting Petroleum Geologist  
Address: 9002 W. Silver Hollow St.  
Wichita, KS. 67205-8856

### Cores

None Taken

## DSTs

**DST #1(Lansing 'A') 4205' - 4221'** Test Times 15"-45"-45"-90" IFP Strong Blow Gas to Surface in 4 Min., FFP Strong Blow Gas to Surface throughout Gauged Max. 468 MCFG; REC: 125' WM(20%W, 80%M), 125' MW(80%W, 20%M) CI 109,000 Mud 6600; IFP 70-96#, ISIP 1432#, FFP 70-100#, FSIP 1397#, IHP 2020#, FHP 2013#, BHT 115 Deg F.

**DST #2(Lansing 'B') 4236' - 4258'** Test Times 15"-45"-30"-60" IFP Strong Blow BOB/25 Sec., 2" Blowback on ISI, FFP Strong Blow BOB/4 Min., no Gas to surface, 10" Blowback on FSI; REC: 1100' Gas in Pipe, 155' GM&WCO(12%G, 45%O, 19%W, 24%M), 235' SOCMW(1%O, 93%W, 6%M) CI 86,000, Mud 4600; IFP 51-82#, ISIP 1410#, FFP 107-178#, FSIP 1391#, IHP 2022#, FHP 1998#, BHT 120 Deg. F.

**DST #3(Miss. Chert/Dolo.) 4770' - 4829'** Test Times 15"-45"-15"-45" IFP Very Weak 0.5" Blow, FFP No Blow, no Blowback on SI's; REC: 5' Hvy. Drlg Mud, no shows; IFP 22-24#, ISIP 68#, FFP 25-25#, FSIP 39#, IHP 2322#, FHP 2264#, BHT 117 Deg. F.

**DST #4(Miss. Chert/Dolo.) 4829' - 4845'** Test Times 15"-45"-30"-60" IFP Weak Blow built to 1.5", FFP Weak Blow built to 1.5", no Blowback on SI's; REC: 5' CO, 60' OCWM(24%O, 16%W, 60%M), 65' SOCMW(2%O, 50%W, 48%M), CI 83,000, Mud 8800; IFP 19-40#, ISIP 1520#, FFP 46-78#, FSIP 1528#, IHP 2348#, FHP 2331#, BHT 123 Deg F.

## Comments

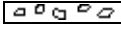
7/12/12 MIRU Sterling Drilling Co. Rig #2, Spud at 8:00 PM; 7/13/12 TD. 523' - Wiper Trip prior to setting Surface Casing; 7/14/12 TD. 523' - WOC; 7/15/12 Drilling at 1780'; 7/16/12 Drilling at 2833'; 7/17/12 Drilling at 3532'; 7/18/12 Drilling at 4150'; 7/19/12 TD. 4221' - TIH after DST #1; 7/20/12 Drilling at 4365'; 7/21/12 TD. 4708' - CFS; 7/22/12 TD. 4829' - TIH after DST #3; 7/23/12 RTD. 4930' - CCH for Logs

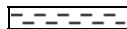



Set new 8 5/8"(23#) Surface Casing at 519' w/350 sx. cement(Basic Energy Services). Cement to Cellar. PD. 12:45 PM. 7/13/12. Cement fell 30' - cement through 1" with 75 additional sx. Completed 2:00 AM. 7/14/12.





Surveys: 0.25 Deg. at 523'(Surface Casing); 0.50 Deg. at 4221'(DST #1); 1.50 Deg. at 4829'(DST #3)

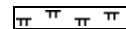
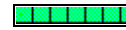
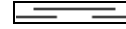

Pipe Strap at 4221'(DST #1): Strap 1.62' Short to the Board, no correction made to the Board.

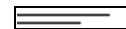


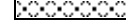
## ROCK TYPES

	<b>Anhy</b>
	<b>Bent</b>
	<b>Brec</b>
	<b>Cht</b>

	<b>Clyst</b>
	<b>Coal</b>
	<b>Congl</b>
	<b>Dol</b>

	<b>Gyp</b>
	<b>Igne</b>
	<b>Lmst</b>
	<b>Meta</b>

	<b>Mrlst</b>
	<b>Salt</b>
	<b>Shale</b>
	<b>Shcol</b>

	<b>Shgy</b>
	<b>Sltst</b>
	<b>Ss</b>
	<b>Till</b>



WOB 40K  
PP 960#  
SPM 59  
RPM 74

conn

Vis 55  
Wt. 9.2  
LCM 2#

conn

conn  
WOB 40K  
PP 850#  
SPM 56  
RPM 72

A.V. = 125.05

conn

Vis 50  
Wt. 9.2  
LCM 2#

WOB 40K  
PP 875#  
SPM 56  
RPM 68  
conn

ROP (min/ft) 10  
Gamma (API) 150

conn

Vis 52  
Wt. 9.3  
LCM 2#

conn

WOB 40K  
PP 875#  
SPM 56

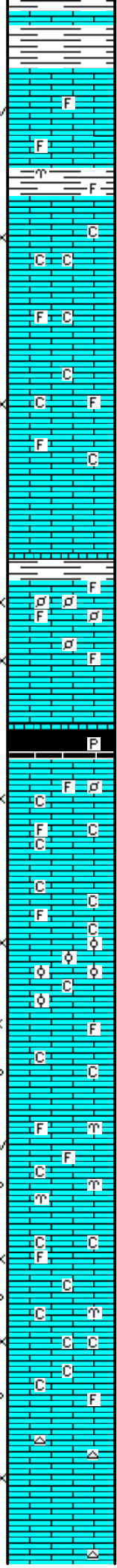
3850

3900

3950

4000

4050



SH; med to dk gy, platy to flakey

LM; tan, off wh, buff, foss ip, most well cem, interbdd foss lmst w/fair vug por, lt to med yel min fluor, no stn or odor, ns.

SH; grn, gy grn, platy, occ foss

LM; tan to cream, lt brn, f to med xln, fair to occ gd interxln por, minor soft chalky mtx, lt yel min fluor, no stn or odor, ns.

LM; tan to cream, off wh, f to med xln, fair to gd interxln por, scat foss mat, interbdd soft chalky lmst, lt yel min fluor, no stn or odor, ns.

**POOR SAMPLES: 75 - 80% SHALE, REDUCE PUMP PRESSURE TO 55 TO 56 SPM = 850#**

SH; med to dk gy, red, grn, slough shales

LM; tan to cream, lt brn, fxln w/scat foss mat. occ finely pelletal, fair interpart por, lt yel min fluor, ns.

SH; blk, carb ip, platy, trc pyr

LM; wh, lt gy, off wh, f to med xln, some gran text, fair to gd interxln por, scat foss mat, lt to med yel fluor, some very chalky - soft, ns.

LM; off wh, tan, scat foss mat - finely pelletal ip, trc oolitic lmst, poor to fair interpart por, lt yel min fluor, scat chalky lmst, no stn or odor, ns.

LM; off wh, tan, foss ip, scat good vug and p-p por, lt yel min fluor, no stn or odor, no gas kick, barren, ns.

LM; off wh, lt gy, buff, f to med xln, some gran text, abnt soft chalk and chalky lmst, lt yel fluor, fair to occ gd interxln w/p-p por, no stn, no gas kick, ns.

LM; tan to buff, off wh, f to med xln, fair to gd interxln w/occ p-p por, interbdd tan to lt brn hd micrite, decr. chalk and chalky mtx, lt yel fluor, occ tan to off wh cht, ns.

LM; med brn, dense, scat tan/off wh cht, no vis por, tite

Gas Test at Extractor

Change Extractors @ 3912'

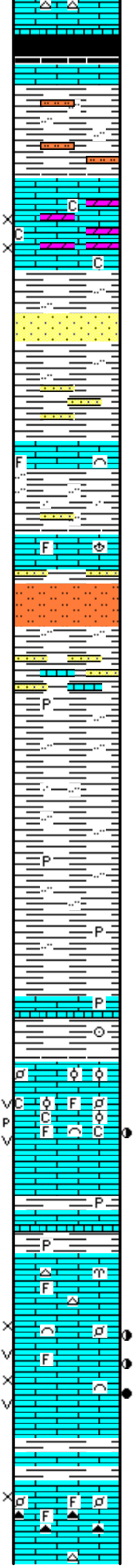
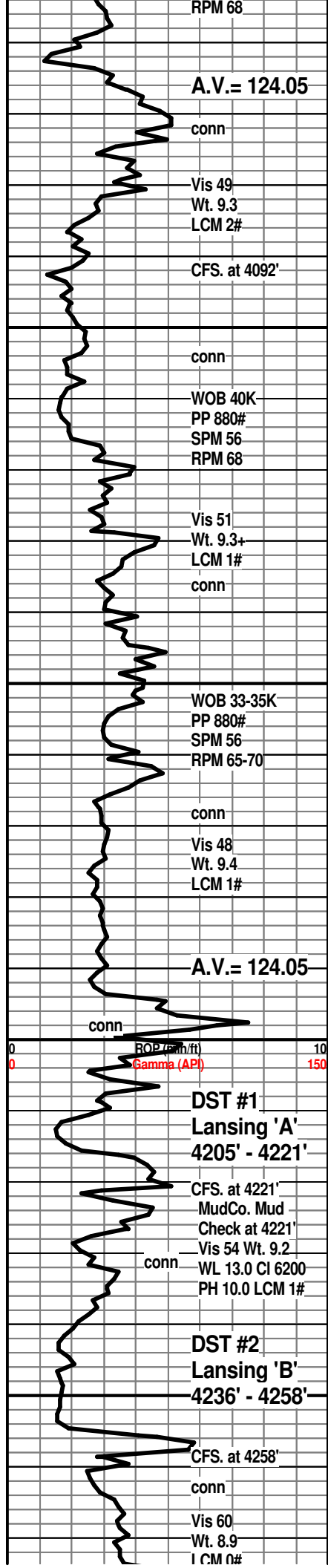
13 Unit Incr. Shale

TG

C1

C2

0.5 5 TG, C1-C5 50 500



**HEEBNER SHALE 4059(-1796)**  
SH; blk, carb ip, platy, trc gas bubb.  
LM; med to dk brn, v. hd, blocky, tite

SH; grn, gy grn, silty w/some interbdd sltst

**TORONTO 4079(-1816)**  
LM; wh, off wh, fxln to sucrosic text, partly dolomitic, fair interxln por, lt yel fluor, occ soft chalky mtx, no vis stn, no odor, no vis gas bubbles, no gas kick, barren

**DOUGLAS SHALE 4092(-1829)**  
SH; lt gy, soft, silty ip, interbdd vf to fgr qtz ss, tite mica ss, platy

SH; lt to med gy, grn, silty w/rare vf gr qtz ss strngs.

LM; lt to med brn, foss, hd, blocky, no vis por, lt yel min fluor, ns.

SH; lt gy, gy grn, silty to rarely sandy, occ mica

LM; lt brn, occ med brn, foss, dense, blocky, scat hd vf gr qtz ss, tite

SLTST; lt gy, sandy ip, firm

SH; lt gy, sandy to occ lmy, v. firm, platy, scat disse pyr

SH; lt to med gy, silty ip, occ sticky - gumbo

SH; lt to med gy, occ silty, firm, rarely pyr

**BROWN LMST. 4194(-1931)**  
LM; med to occ dk brn, micritic, hd, trc pyr

**LANSING 'A' 4203(-1940)**  
LM; wh, off wh, foss ip, rare small oolites, most w/fair to occ gd p-p and small vug por, med yel fluor, faint sweet gas odor, gas bubbles, chalky mtx, occ cse spar calc xtals, trc med brn oil stn, trc. lt clr FO. droplets, pred. gas show

DST #1: Lansing 'A' 4205' - 4221'

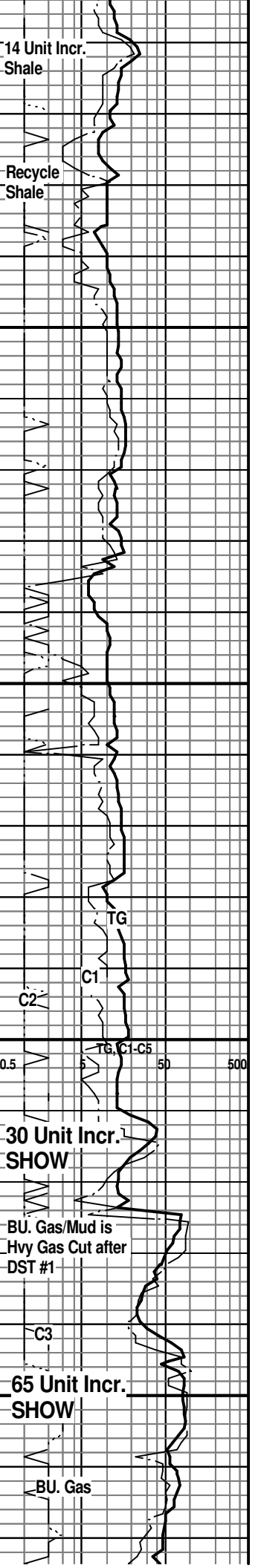
SH; med gy, grn, platy, occ pyr

**LANSING 'B' 4230(-1967)**  
LM; tan to cream, foss, most well cem, scat off wh cht, lt yel fluor, no stn, tite

LM; tan to lt brn, buff, f to med xln, foss ip, gd interxln w/well dev. vug por, much brite yel fluor, SSFO, gas bubbles, spotted to occ even lt brn oil stn, gd odor, fair to gd cut, some barren porosity

DST #2: Lansing 'B' 4236' - 4258'

LM; lt brn, tan, v. foss ip, poor vis interpart por, abnt wh to amber cht, dull yel min fluor only, no stn or odor, ns.



WOB 40K  
PP 750#  
SPM 55  
RPM 70  
conn

A.V.= 124.20

Vis 52  
Wt. 9.0  
LCM 0#  
CFS. at 4322'  
conn

Vis 58  
Wt. 9.0  
LCM 0#  
conn

WOB 40K  
PP 875#  
SPM 56  
RPM 70  
conn

MudCo. Mud  
ROP (min) Check at 4399' 10  
Gamma (A) 150  
Vis 50 Wt. 9.1  
WL 16.4 CI 10,600  
PH 9.0 LCM 0#

conn  
Vis 50  
Wt. 9.0+  
LCM 0#

conn  
Jet #1/Add Premix

WOB 40K  
PP 775#  
SPM 56  
RPM 72

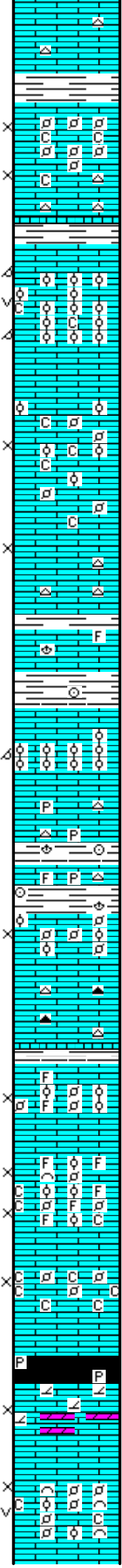
conn

4300

4350

4400

4450



LM; tan to buff, lt brn, most dense, blocky, hd, scat tan cht, ns.

SH; med gy, gy grn, firm  
**LANSING 'E/F' ZONE 4288(-2025)**

LM; wh, off wh, finely pelletal, interbdd med xln partly chalky lmst, fair to gd interxln/interpart por, lt yel fluor, no stn or odor, no gas kick, barren, ns.

**LANSING 'G' 4308(-2045)**

LM; lt to med brn, oolitic, med size molds w/v. gd oomoldic por, occ vug por, brittle, dull yel to lt yel fluor, no stn or odor, minor chalky mtx, barren, no gas kick

LM; lt gy, lt brn, dense, micritic, tite

LM; wh, off wh, buff, foss, scat small ooids and pellets, occ chalky mtx, fair interpart por, scat lt yel min fluor, no vis stn, no odor, no gas kick

LM; tan to cream, buff, f to med xln, fair interxln por, scat off wh to gy cht, dull yel fluor, ns.

LM; tan to med brn, foss ip, scat pyr, hd

**LANSING/KC. 'H' 4373(-2110)**

LM; lt brn to buff, tan, oolitic, small to med size molds, poor to fair oomoldic por, lt to occ med yel fluor, no stn or odor, no vis gas bubbles, ns.

LM; tan to buff, hd, micritic, scat gy/off wh cht, tite, scat pyr

SH; med gy, platy, foss ip, soft

LM; off wh, tan, cream, foss - finely pelletal w/scat small ooids, fair interpart por, dull yel min fluor, no stn or odor, no sample shows

LM; lt to med brn, hd, blocky, scat tan/amber cht, tite

**K.C. 'I' ZONE 4423(-2160)**

LM; off wh, tan, cream, foss - finely pelletal/oolitic, most well cem, poor interpart por, lt yel min fluor, no vis stn, no odor, no sample shows

LM; tan to buff, lt brn, foss - finely pelletal w/scat ooids, fair to occ gd interpart por, interbdd soft chalk and chalky lmst, no stn or odor, dull yel fluor, no sample shows

LM; off wh, tan, foss w/much soft chalk and chalky lmst, fair interpart por, med yel min fluor, no vis stn, no odor, ns.

SH; blk, carb ip, platy, scat pyr

**K.C. 'J' DENNIS 4468(-2205)**

LM; tan to buff, lt brn, fxln, scat sucrosic text, partly dolomitic, fair interxln por, dull yel min fluor, no vis stn, no odor, no sample shows

LM; tan to lt brn, foss - finely pelletal, scat foss hash, fair interpart and small vug por, lt yel min fluor, minor chalky mtx, interbdd soft chalky lmst, no stn or odor, no gas kick, ns.

Recycle

NO GAS READINGS

**TOOKE DAQ PROBLEM - NO GAS READINGS FROM 4372' TO 4412'**

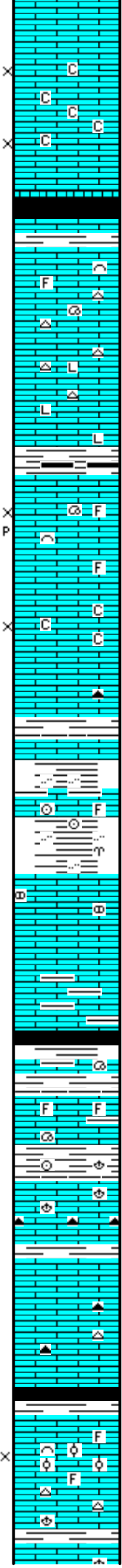
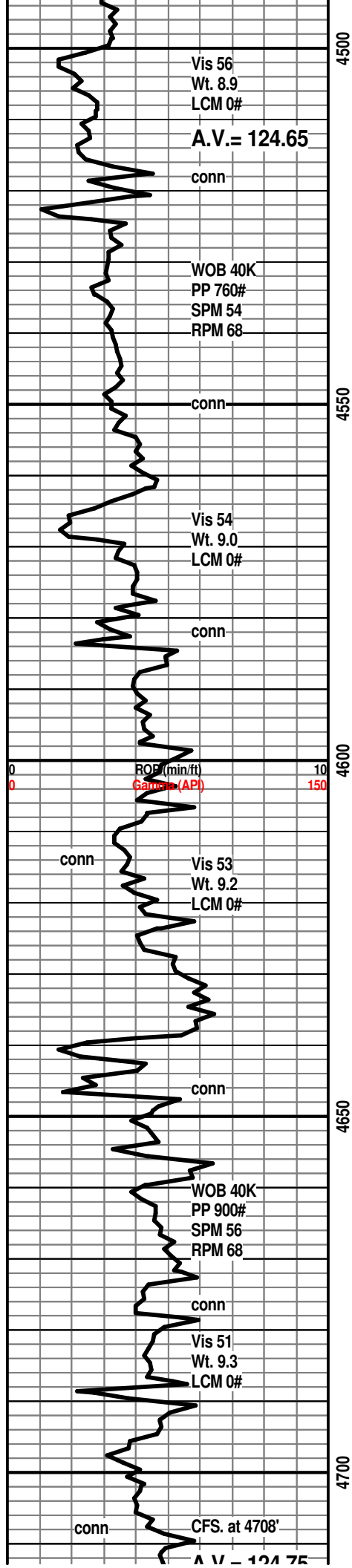
TG, C1-C5 0.5 5 50 500

Gas readings resume at 4412'

4 Unit Incr.

12 Unit Incr. Shale

Recycle



LM; off wh, tan, buff, fxln to micritic, some blocky, hd, tite

LM; off wh, f to med xln, scat cse spar calc xtals, much soft chalky mtx, fair to poor interxln por, no fluor, no stn or odor, ns.

**STARK SHALE 4521(-2258)**  
SH; blk, carb ip, pyr

**SWOPE 4528(-2265)**  
LM; tan to lt brn, foss ip, well cem, most blocky, dense, dull yel to no fluor, scat lt gy/off wh cht, no stn or odor, ns.

LM; tan to buff, cream, dense, micritic to litho, tite, scat off wh cht

SH; blk, gy grn, dk gy, platy

**HERTHA 4560(-2297)**  
LM; tan to lt brn, buff, fxln, scat foss mat, fair interxln/interpart w/some p-p por, lt yel fluor, no vis stn, no odor, no gas kick

LM; tan to lt brn, fxln, scat spar calc xtals, fair interxln por ip, minor soft chalky mtx, lt yel fluor, ns.

LM; med to dk brn, hd, micritic, trc dk gy cht

**BASE KANSAS CITY 4600(-2337)**  
SH; varic, rust red, grn, brn, flakey, silty ip.  
LM; med brn, gy brn, argil, foss ip.

SH; varic, rust red, grn, foss ip, occ silty

**PLEASANTON 4616(-2353)**  
LM; lt brn, nodular ip, partly weathered, hd

LM; off wh, tan, wh, most micritic, hd, rarely foss, lt yel min fluor, no stn, bcm argil at base

SH; dk gy, trc blk, some varic.

**MARMATON 4642(-2382)**  
LM; tan to lt brn, foss ip, well cem, hd, blocky, rare grn argil lmst, no fluor, no vis por, ns.

SH; grn, gy grn, platy, foss ip.

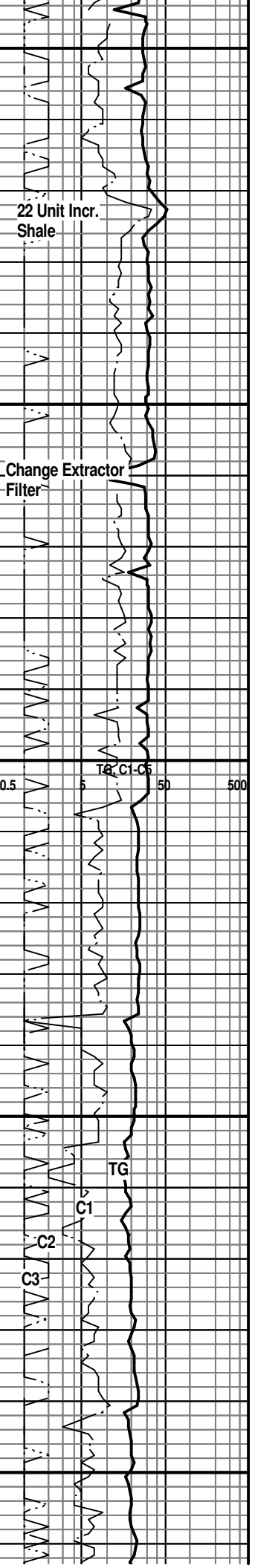
LM; off wh, tan, buff, foss ip, most well cem, occ cherty w/amber/org and brn cht, no fluor, no stn or odor, ns.

LM; lt to med brn, most dense, blocky, hd, scat off wh/amber cht, no vis por, dull to lt yel min fluor, ns.

SH; dk gy, blk, platy, soft

**PAWNEE 4692(-2429)**  
LM; tan to buff, off wh, foss ip, poor to fair interpart por, lt yel fluor, trc finely oolitic lmst, no vis stn, no odor, no gas kick - POOR SAMPLES, some med brn dense micrite

LM; lt to med brn, hd, micritic, scat well cem foss frags.



A.V.= 124.75

MudCo. Mud  
Check at 4721'  
Vis 49 Wt. 9.3  
WL 14.4 CI 7800  
PH 10.5 LCM 0#  
conn

WOB 40K  
PP 775#  
SPM 55  
RPM 65-70

Vis 56  
Wt. 9.1  
LCM 2#

WOB 40K  
PP 900#  
SPM 56  
RPM 68

ROP (min/#) 10  
Gamma (A) conn 150

DST #3  
Vis 54  
Wt. 9.2  
LCM 2#  
**Miss. Chert  
4770' - 4829'**

R=Rough  
Drilling  
CFS. at 4829'  
DST #4  
Miss.  
4829' - 4845'

CFS. at 4845'  
MudCo. Mud  
Check at 4845'  
Vis 53 Wt. 9.05  
WL 11.6 CI 8800  
PH 9.0 LCM 2#  
conn

WOB 40K  
PP 825#  
SPM 56  
RPM 73

conn

Vis 67  
Wt. 9.2  
LCM 2#

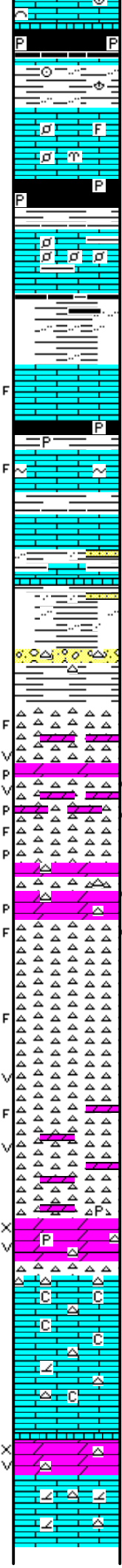
CFS. at 4930'

4750

4800

4850

4900



no fluor, ns.

SH; blk, carb, gassy ip, scat pyr, blocky

SH; grn, gy grn, red, foss ip, flakey

LM; tan to lt brn, buff, foss ip, well cem, scat spar calc xtals, med/brite yel min fluor, no vis por, no stn, no gas kick, tite

**CHEROKEE SHALE 4738(-2475)**

SH; blk, v. dk gy, carb, soft to brittle, scat pyr

LM; tan to med brn, gy brn, hd, foss - scat small pellets, well cem, no vis por, some argil lmst, no fluor, no stn, ns.

SH; varic, dk gy, trc blk, grn, gy, silty ip, fiss - flakey

LM; lt to med brn, blocky, micritic, hd, poss frags, dull yel min fluor, no vis stn, ns.

SH; blk, dk gy, pyr ip

LM; tan to med brn, cse xln, cse spar calc xtals, poss frags, glau ip, faint gas odor, trc gas bubbles, lt yel fluor, trc blk tar/gils

LM; lt gy, pale grn tint, blocky, micritic, no vis por, no fluor, ns.

SH; varic, grn, rust red, yel, brn, platy, occ silty to sandy, trc red sandy sh

SH; varic, some nodular weath lmst, scat wh/transl cht

**MISS. UNCONFORMITY 4812(-2549)**

CHT; wh, off wh, most fresh, interbdd cherty dolo, sucrosic, frags in cht w/trc edge stn, v. faint odor, dead oil only, v. dull yel fluor

CFS(60 Min): CHT, wh, pale grn, opaque, fresh and some trip, fair p-p and vug por w/fracs, interbdd sucrosic dolo w/scat lt brn live stn, gd odor, Trc. FO, spotted stn, trc gas bubbles

**DST #3: Miss. Chert 4770' - 4829'**

CHT; wh, off wh, pale grn, fresh and trip, spotted lt brn stn, Trc. FO, strong odor, frags w/fair p-p por, brite yel fluor, interbdd tan cherty sucrosic dolo, scat stn, some dense, occ lrg qtz xtals

**DST #4: Miss. Cht/Dol. 4829' - 4845'**

CHT; wh, opaque, porc, pred fresh, scat frags w/rare blk tar/gils on edges, no fluor, no stn or odor, ns.

CHT; wh, off wh, rare lt gy, porc, hd, all fresh, scat vug por w/fracs, partly dolomitic, dull yel min fluor, no stn or odor, ns.

DOL; tan, buff, lt gy, sucrosic, fair to gd interxln w/vug por, med yel min fluor, no stn or odor, cherty ip, rarely pyr, ns.

LM; tan to cream, rare lt brn, hd, blocky, no vis por, interbdd chalky lmst, cherty ip, no fluor, no stn or odor, ns.

DOL; lt gy, tan, sucrosic, soft, gd interxln w/occ vug por, med yel min fluor, cherty ip, no stn or odor, ns.

LM; off wh, buff, tan, fxln, partly dolomitic, lt yel fluor, hd, blocky, no stn, ns.

27 Unit Incr. Shale

15 Unit Incr. Shale

0.5 TG, C1-C5 50 500

3 Unit Incr. SHOW

2 Unit Incr. SHOW

BU. Gas



RTD.

4950

00

RTD. 4930' at 6:15 AM. 7/23/12

LTD.

Halliburton DIL, NEU/DEN w/PE,  
Microlog, Sonic, MIRL