



TRILOBITE TESTING, INC.

DRILL STEM TEST REPORT

Red Oak Energy LLC

2-15s-41w

7701 E Kellogg STE 710
P.O. Box 783140

SGO 1-2

Job Ticket: 51077

DST#: 1

ATTN: Scott Banks

Test Start: 2012.10.23 @ 15:35:15

GENERAL INFORMATION:

Formation: **Marrow Lime**

Deviated: No Whipstock: ft (KB)

Time Tool Opened: 17:46:15

Time Test Ended: 00:33:45

Test Type: Conventional Bottom Hole (Initial)

Tester: Wilbur Steinbeck

Unit No: 65

Interval: 4925.00 ft (KB) To 5130.00 ft (KB) (TVD)

Reference Elevations: 3748.00 ft (KB)

Total Depth: 5130.00 ft (KB) (TVD)

3738.00 ft (CF)

Hole Diameter: 7.88 inches Hole Condition: Fair

KB to GR/CF: 10.00 ft

Serial #: 6668

Inside

Press @ Run Depth: 748.20 psig @ 4926.00 ft (KB)

Capacity: 8000.00 psig

Start Date: 2012.10.23

End Date:

2012.10.24

Last Calib.: 2012.10.24

Start Time: 15:35:15

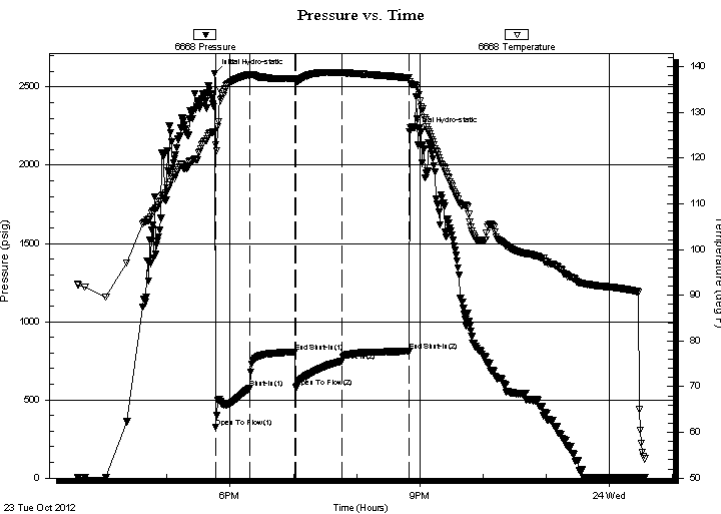
End Time:

00:33:45

Time On Btm: 2012.10.23 @ 17:45:15

Time Off Btm: 2012.10.23 @ 20:50:15

TEST COMMENT: 30 IF; Built to B.O.B. in 1 min
45 IS; Built to 6" in 45 min
45 FF; Built to B.O.B. in 1 min
60 FS; Built to B.O.B. in 35 min



PRESSURE SUMMARY

Time (Min.)	Pressure (psig)	Temp (deg F)	Annotation
0	2586.95	125.81	Initial Hydro-static
1	326.71	122.96	Open To Flow (1)
33	573.89	138.19	Shut-In(1)
76	806.47	137.35	End Shut-In(1)
77	581.98	136.68	Open To Flow (2)
121	748.20	138.66	Shut-In(2)
184	809.49	137.60	End Shut-In(2)
185	2212.48	136.76	Final Hydro-static

Recovery

Length (ft)	Description	Volume (bbl)
192.00	OMSW 1%O 1%M 98%W	1.06
224.00	MOGCW 25%G 15%O 55%W 5%M	3.14
224.00	MOGCW 30%G 20%O 45%W 5%M	3.14
512.00	MOGCW 25%G 20%O 50%W 5%M	7.18
448.00	MOGCW 25%G 35%O 30%W 10%M	6.28

Gas Rates

Choke (inches)	Pressure (psig)	Gas Rate (Mcf/d)
----------------	-----------------	------------------



**TRILOBITE
TESTING, INC.**

DRILL STEM TEST REPORT

FLUID SUMMARY

Red Oak Energy LLC

2-15s-41w

7701 E Kellogg STE 710
P.O. Box 783140

SGO 1-2

Job Ticket: 51077

DST#: 1

ATTN: Scott Banks

Test Start: 2012.10.23 @ 15:35:15

Mud and Cushion Information

Mud Type: Gel Chem

Cushion Type:

Oil API:

deg API

Mud Weight: 9.00 lb/gal

Cushion Length:

ft

Water Salinity:

ppm

Viscosity: 64.00 sec/qt

Cushion Volume:

bbbl

Water Loss: 7.99 in³

Gas Cushion Type:

Resistivity: ohm.m

Gas Cushion Pressure:

psig

Salinity: 3000.00 ppm

Filter Cake: inches

Recovery Information

Recovery Table

Length ft	Description	Volume bbbl
192.00	OMSW 1%O 1%M 98%W	1.063
224.00	MOGCW 25%G 15%O 55%W5%M	3.142
224.00	MOGCW 30%G 20%O 45%W 5%M	3.142
512.00	MOGCW 25%G 20%O 50%W 5%M	7.182
448.00	MOGCW 25%G 35%O 30%W 10%M	6.284

Total Length: 1600.00 ft

Total Volume: 20.813 bbl

Num Fluid Samples: 25

Num Gas Bombs: 0

Serial #:

Laboratory Name:

Laboratory Location:

Recovery Comments:

Pressure vs. Time

