

| | | | | |
|----------|--------------------------------|---------------|------------------------|------------------------|
| Company | Baird Oil Company, Inc. | Lease Name | Esslinger Ranch | |
| Address | P. O. Box 428 | Lease # | 4-35 | |
| CSZ | Logan, KS 67646 | Legal Desc | SE SE SW NE | Job Ticket 3419 |
| Attn. | Richard Bell | Section | 35 | Range 22W |
| | | Township | 3S | |
| | | County | Norton | State KS |
| | | Drilling Cont | WW Drilling #8 | |
| Comments | Field: Wildcat | | | |

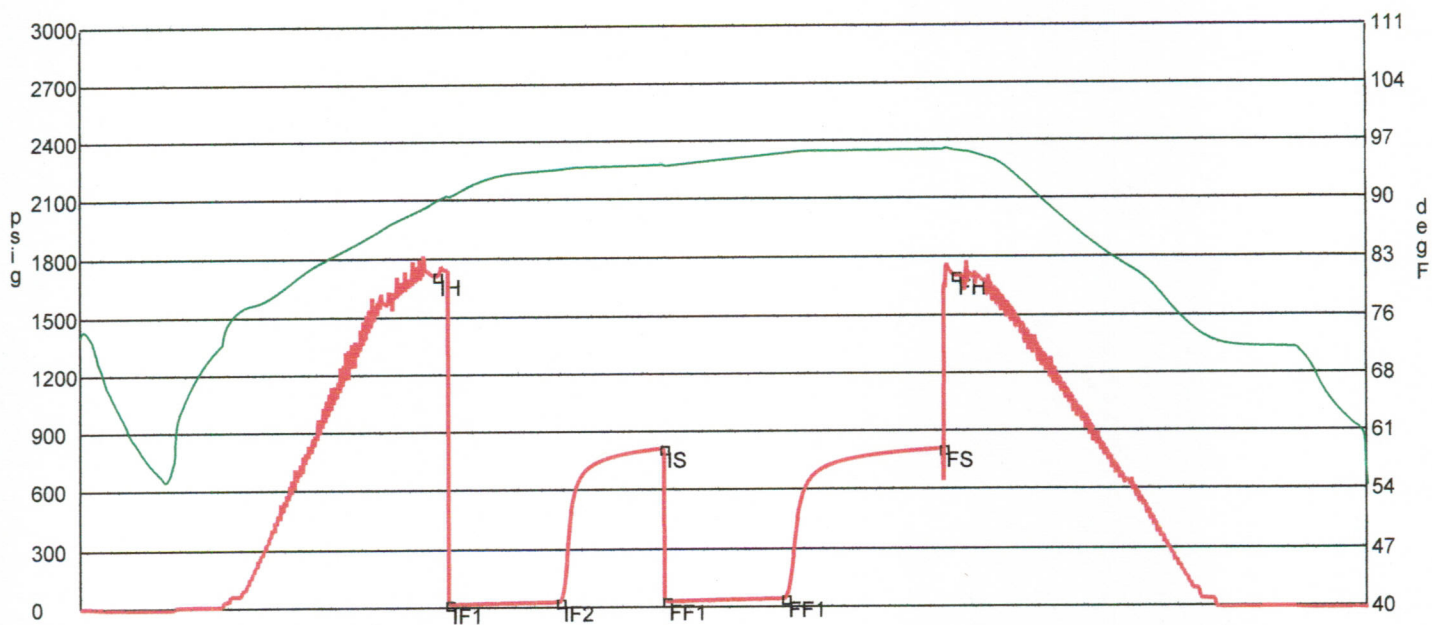
GENERAL INFORMATION

| | | | | | | |
|------------------|--|------------------|-----------------|-----------------|---------------------------|--------------------------------|
| Test # 1 | Test Date | 3/26/2011 | Chokes | 3/4 | Hole Size | 7 7/8 |
| Tester | Jimmy Ricketts | | Top Recorder # | 11027 | | |
| Test Type | Conventional Bottom Hole | | Mid Recorder # | | | |
| | Successful Test | | Bott Recorder # | w1023 | | |
| # of Packers | 2.0 | Packer Size | 6 3/4 | Mileage | 240 | Approved By |
| Mud Type | Gel Chem | | | Standby Time | 0 | |
| Mud Weight | 9.1 | Viscosity | 64.0 | Extra Equipmnt | None | |
| Filtrate | 6.8 | Chlorides | 1300 | Time on Site | 3:20 PM | |
| | | | | Tool Picked Up | 5:00 PM | |
| | | | | Tool Layed Dwn | 10:20 PM | |
| Drill Collar Len | 123.0 | | | Elevation | 2299.00 | Kelley Bushings 2304.00 |
| Wght Pipe Len | 0 | | | | | |
| Formation | Lansing A | | | Start Date/Time | 3/26/2011 4:47 PM | |
| Interval Top | 3528.0 | Bottom | 3550.0 | End Date/Time | 3/26/2011 10:48 PM | |
| Anchor Len Below | 22.0 | Between | 0 | | | |
| Total Depth | 3550.0 | | | | | |
| Blow Type | Weak blow building to 1 1/2 inches initial flow period. Weak blow building to 1 1/2 inches final flow period. Times: 31, 30, 33, 45. API gravity was 32. .30 barrel recovery during test. | | | | | |

RECOVERY

| Feet | Description | Gas | Oil | Water | Mud |
|------|-----------------------------|--------|-----------|----------|------------|
| 25 | Clean oil | 0% 0ft | 100% 25ft | 0% 0ft | 0% 0ft |
| 40 | Oil and heavy water cut mud | 0% 0ft | 4% 1.6ft | 25% 10ft | 71% 28.4ft |

DST Fluids **41000**



| | Date | Time | Pressure | Temp | |
|-----|----------------------|----------|----------|--------|----------------------|
| IH | 3/26/2011 6:26:40 PM | 1.661111 | 1713.026 | 89.558 | Initial Hydro-static |
| IF1 | 3/26/2011 6:30:00 PM | 1.716667 | 16.778 | 90.05 | Initial Flow (1) |
| IF2 | 3/26/2011 7:01:10 PM | 2.236111 | 27.284 | 93.323 | Initial Flow (2) |
| IS | 3/26/2011 7:30:20 PM | 2.722222 | 811.229 | 93.854 | Initial Shut-In |
| FF1 | 3/26/2011 7:31:00 PM | 2.733333 | 30.73 | 93.762 | Final Flow (1) |
| FF1 | 3/26/2011 8:04:30 PM | 3.291667 | 42.854 | 95.252 | Final Flow (1) |
| FS | 3/26/2011 8:49:00 PM | 4.033333 | 806.389 | 95.648 | Final Shut-In |
| FH | 3/26/2011 8:52:30 PM | 4.091667 | 1702.231 | 95.562 | Final Hydro-static |

GAS FLOWS

Min Into IFP Min Into FFP Gas Flows Pressure Choke

Company **Baird Oil Company, Inc.**
 Address **P. O. Box 428**
 CSZ **Logan, KS 67646**
 Attn. **Richard Bell**

Lease Name **Esslinger Ranch**
 Lease # **4-35**
 Legal Desc **SE SE SW NE**
 Section **35**
 Township **3S**
 County **Norton**
 Drilling Cont **WW Drilling #8**

Job Ticket **3419**
 Range **22W**
 State **KS**

Comments **Field: Wildcat**

GENERAL INFORMATION

Test # **2** Test Date **3/27/2011**
 Tester **Jimmy Ricketts**
 Test Type **Conventional Bottom Hole**
Successful Test

of Packers **2.0** Packer Size **6 3/4**

Mud Type **Gel Chem**
 Mud Weight **9.1** Viscosity **64.0**
 Filtrate **6.8** Chlorides **1300**

Drill Collar Len **123.0**
 Wght Pipe Len **0**

Formation **Lansing C**
 Interval Top **3554.0** Bottom **3575.0**
 Anchor Len Below **21.0** Between **0**
 Total Depth **3575.0**

Blow Type **Weak blow building to strong blow 6 minutes into initial flow period. 8 inch blow back during initial shut-in period. Weak blow building to strong blow 12 minutes into final flow period. 9 inch blow back during final shut-in period. Times: 30, 45, 30, 48. API gravity was 35. 4.8 barrels recovery during test.**

Chokes **3/4** Hole Size **7 7/8**
 Top Recorder # **11027**
 Mid Recorder #
 Bott Recorder # **w1023**

Mileage **0** Approved By
 Standby Time **0**
 Extra Equipmnt **None**
 Time on Site **5:00 AM**
 Tool Picked Up **6:10 AM**
 Tool Layed Dwn **12:20 PM**

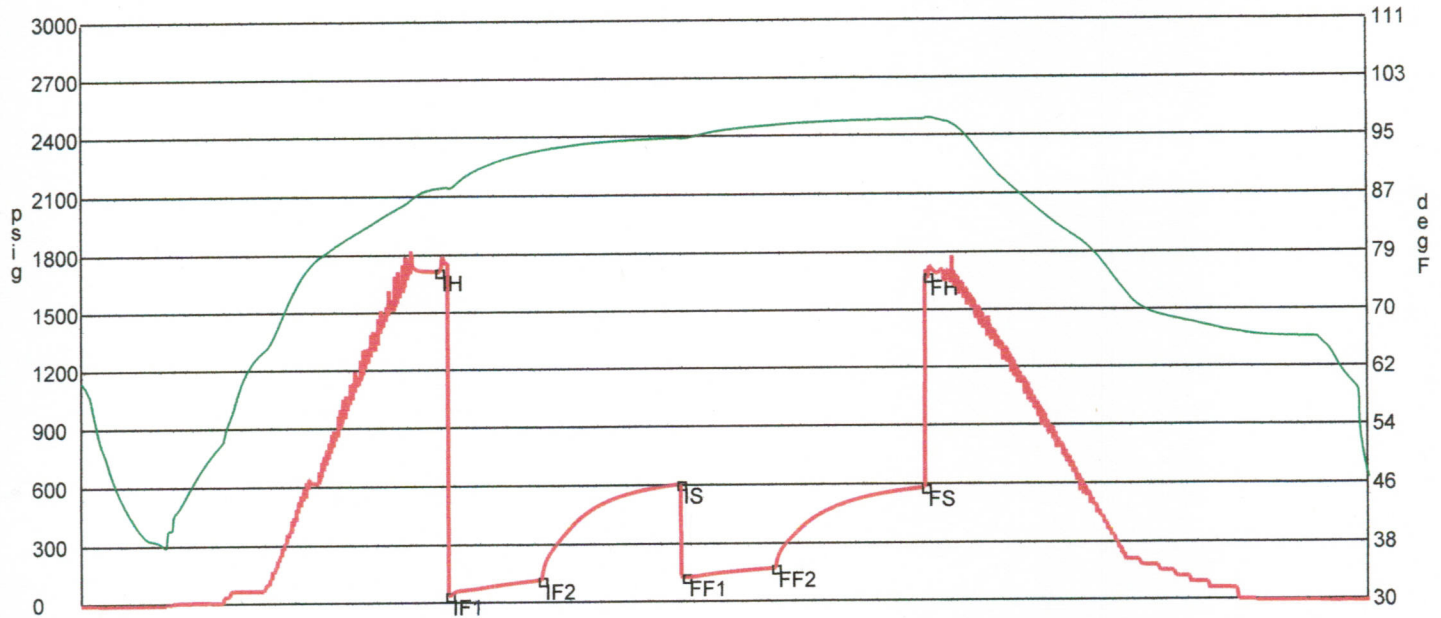
Elevation **2299.00** Kelley Bushings **2304.00**

Start Date/Time **3/27/2011 5:50 AM**
 End Date/Time **3/27/2011 12:42 PM**

RECOVERY

| Feet | Description | Gas | Oil | Water | Mud |
|------|-------------------------|------------|------------|--------|------------|
| 360 | Clean oil | 0% 0ft | 100% 360ft | 0% 0ft | 0% 0ft |
| 65 | Gassy heavy oil cut mud | 19% 12.4ft | 36% 23.4ft | 0% 0ft | 45% 29.2ft |

DST Fluids **0**



| | Date | Time | Pressure | Temp | |
|-----|-----------------------|----------|----------|--------|----------------------|
| IH | 3/27/2011 7:44:00 AM | 1.9 | 1713.032 | 87.783 | Initial Hydro-static |
| IF1 | 3/27/2011 7:47:10 AM | 1.952778 | 35.428 | 87.853 | Initial Flow (1) |
| IF2 | 3/27/2011 8:16:50 AM | 2.447222 | 114.118 | 92.93 | Initial Flow (2) |
| IS | 3/27/2011 9:01:20 AM | 3.188889 | 603.936 | 94.556 | Initial Shut-In |
| FF1 | 3/27/2011 9:03:00 AM | 3.216667 | 125.296 | 94.509 | Final Flow (1) |
| FF2 | 3/27/2011 9:31:40 AM | 3.694444 | 170.507 | 96.266 | Final Flow (2) |
| FS | 3/27/2011 10:19:50 AM | 4.497222 | 581.099 | 97.04 | Final Shut-In |
| FH | 3/27/2011 10:20:40 AM | 4.511111 | 1673.38 | 97.211 | Final Hydro-static |

GAS FLOWS

Min Into IFP Min Into FFP Gas Flows Pressure Choke

Company **Baird Oil Company, Inc.**
 Address **P. O. Box 428**
 CSZ **Logan, KS 67646**
 Attn. **Richard Bell**

Lease Name **Esslinger Ranch**
 Lease # **4-35**
 Legal Desc **SE SE SW NE**
 Section **35**
 Township **3S**
 County **Norton**
 Drilling Cont **WW Drilling #8**

Job Ticket **3419**
 Range **22W**
 State **KS**

Comments **Field: Wildcat**

GENERAL INFORMATION

Test # **3** Test Date **3/27/2011**
 Tester **Jimmy Ricketts**
 Test Type **Conventional Bottom Hole**
Successful Test

of Packers **2.0** Packer Size **6 3/4**

Mud Type **Gel Chem**
 Mud Weight **9.3** Viscosity **65.0**
 Filtrate **6.8** Chlorides **1300**

Drill Collar Len **123.0**
 Wght Pipe Len **0**

Formation **Lansing D**
 Interval Top **3575.0** Bottom **3590.0**
 Anchor Len Below **15.0** Between **0**
 Total Depth **3590.0**

Blow Type **Weak blow building to 1 inch initial flow period. 1/4 inch blow back during initial shut-in period. Weak blow building to 9 inches final flow period. 1 inch blow back during final shut-in period. Times: 30, 45, 30, 47. API gavity was 23. 1.2 barrels recovery during test.**

Chokes **3/4** Hole Size **7 7/8**
 Top Recorder # **11027**
 Mid Recorder #
 Bott Recorder # **w1023**

Mileage **30** Approved By
 Standby Time **0**
 Extra Equipmnt **None**
 Time on Site **5:30 PM**
 Tool Picked Up **6:20 PM**
 Tool Layed Dwn **12:10 AM**

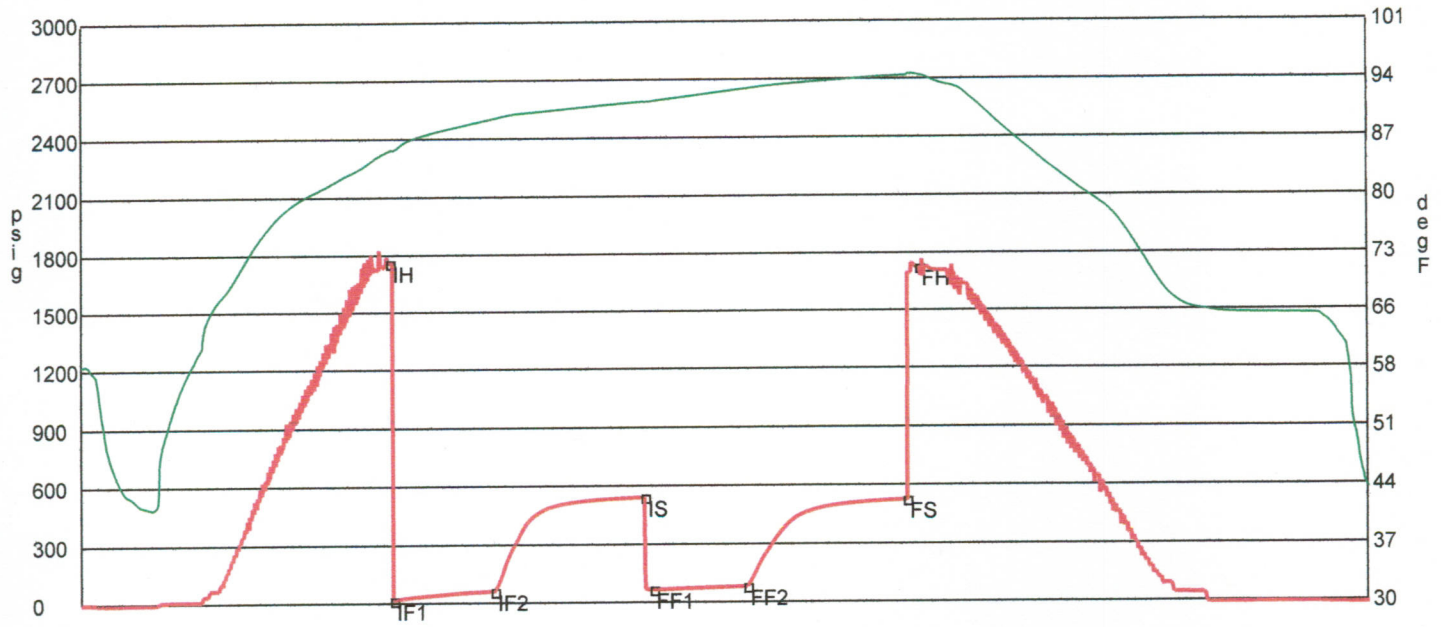
Elevation **2299.00** Kelley Bushings **2304.00**

Start Date/Time **3/27/2011 6:06 PM**
 End Date/Time **3/28/2011 12:25 AM**

RECOVERY

| Feet | Description | Gas | Oil | Water | Mud |
|------|-------------------------|-----------|------------|--------|------------|
| 80 | Gas in pipe | 100% 80ft | 0% 0ft | 0% 0ft | 0% 0ft |
| 130 | Clean oil | 0% 0ft | 100% 130ft | 0% 0ft | 0% 0ft |
| 40 | Gassy heavy mud cut oil | 6% 2.4ft | 48% 19.2ft | 0% 0ft | 46% 18.4ft |

DST Fluids **0**



| | Date | Time | Pressure | Temp | |
|-----|-----------------------|----------|----------|--------|----------------------|
| IH | 3/27/2011 7:36:20 PM | 1.505556 | 1759.754 | 85.34 | Initial Hydro-static |
| IF1 | 3/27/2011 7:37:20 PM | 1.522222 | 15.488 | 85.37 | Initial Flow (1) |
| IF2 | 3/27/2011 8:07:00 PM | 2.016667 | 59.527 | 89.195 | Initial Flow (2) |
| IS | 3/27/2011 8:51:20 PM | 2.755556 | 538.976 | 91.213 | Initial Shut-In |
| FF1 | 3/27/2011 8:53:50 PM | 2.797222 | 65.13 | 91.267 | Final Flow (1) |
| FF2 | 3/27/2011 9:21:30 PM | 3.258333 | 80.082 | 92.752 | Final Flow (2) |
| FS | 3/27/2011 10:08:40 PM | 4.044444 | 522.747 | 94.293 | Final Shut-In |
| FH | 3/27/2011 10:12:20 PM | 4.105556 | 1724.619 | 94.356 | Final Hydro-static |

GAS FLOWS

Min Into IFP Min Into FFP Gas Flows Pressure Choke

Company **Baird Oil Company, Inc.**
 Address **P. O. Box 428**
 CSZ **Logan, KS 67646**
 Attn. **Richard Bell**

Lease Name **Esslinger Ranch**
 Lease # **4-35**
 Legal Desc **SE SE SW NE**
 Section **35**
 Township **3S**
 County **Norton**
 Drilling Cont **WW Drilling #8**

Job Ticket **3419**
 Range **22W**
 State **KS**

Comments **Field: Wildcat**

GENERAL INFORMATION

Test # **4** Test Date **3/28/2011**
 Tester **Jimmy Ricketts**
 Test Type **Conventional Bottom Hole**
Successful Test

of Packers **2.0** Packer Size **6 3/4**

Mud Type **Gel Chem**
 Mud Weight **9.2** Viscosity **63.0**
 Filtrate **6.4** Chlorides **1300**

Drill Collar Len **123.0**
 Wght Pipe Len **0**

Formation **Lansing F**
 Interval Top **3590.0** Bottom **3610.0**
 Anchor Len Below **20.0** Between **0**
 Total Depth **3610.0**

Blow Type **Weak blow building to 3 inches initial flow period. Weak blow building to 2 inches final flow period. Times: 30, 30, 30, 32. .48 barrel recovery during test.**

Chokes **3/4** Hole Size **7 7/8**
 Top Recorder # **11027**
 Mid Recorder #
 Bott Recorder # **w1023**

Mileage **30** Approved By
 Standby Time **0**
 Extra Equipmnt **None**
 Time on Site **6:30 AM**
 Tool Picked Up **7:45 AM**
 Tool Layed Dwn **1:00 PM**

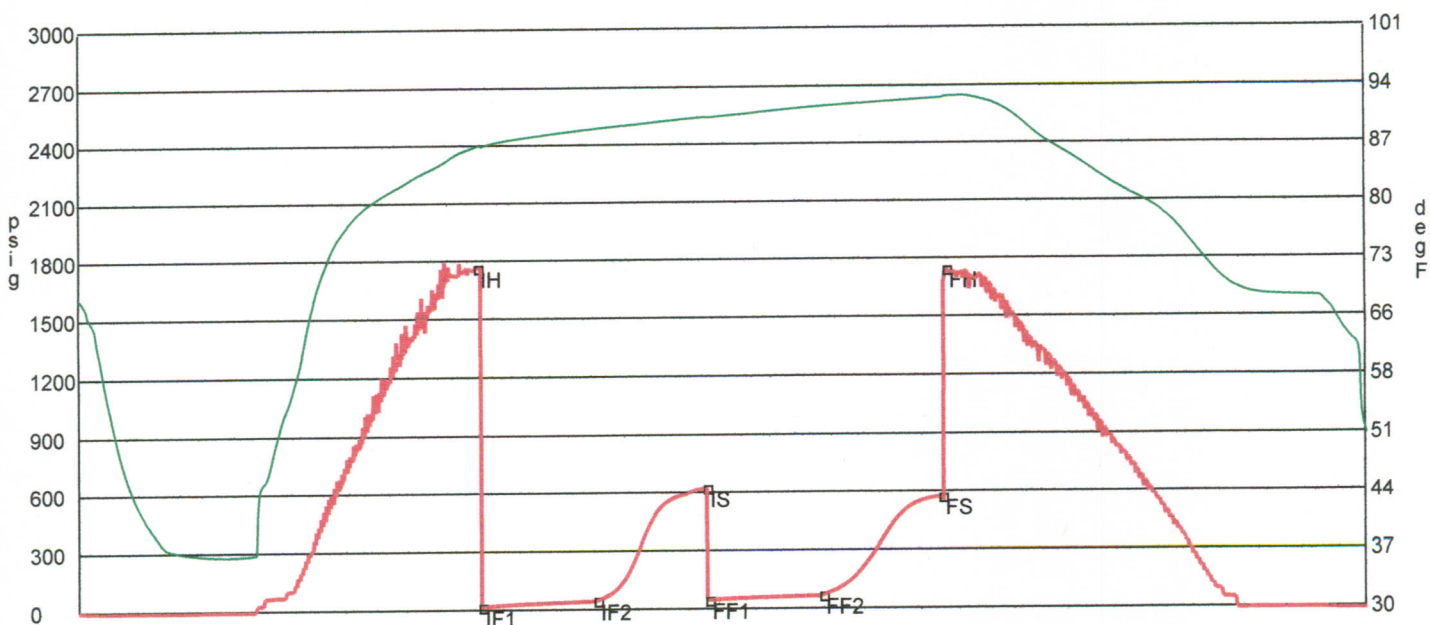
Elevation **2299.00** Kelley Bushings **2304.00**

Start Date/Time **3/28/2011 7:26 AM**
 End Date/Time **3/28/2011 1:06 PM**

RECOVERY

| Feet | Description | Gas | Oil | Water | Mud |
|------|-------------------|--------|------------|--------|------------|
| 45 | Heavy mud cut oil | 0% 0ft | 73% 32.8ft | 0% 0ft | 27% 12.2ft |
| 30 | Heavy oil cut mud | 0% 0ft | 49% 14.7ft | 0% 0ft | 51% 15.3ft |
| 30 | Oil cut mud | 0% 0ft | 7% 2.1ft | 0% 0ft | 93% 27.9ft |

DST Fluids **0**



| | Date | Time | Pressure | Temp | |
|-----|-----------------------|----------|----------|--------|----------------------|
| IH | 3/28/2011 9:10:50 AM | 1.747222 | 1762.136 | 86.682 | Initial Hydro-static |
| IF1 | 3/28/2011 9:11:50 AM | 1.763889 | 15.192 | 86.638 | Initial Flow (1) |
| IF2 | 3/28/2011 9:42:20 AM | 2.272222 | 45.455 | 88.81 | Initial Flow (2) |
| IS | 3/28/2011 10:11:20 AM | 2.755556 | 621.69 | 90.171 | Initial Shut-In |
| FF1 | 3/28/2011 10:11:50 AM | 2.763889 | 45.89 | 90.127 | Final Flow (1) |
| FF2 | 3/28/2011 10:42:00 AM | 3.266667 | 67.773 | 91.426 | Final Flow (2) |
| FS | 3/28/2011 11:13:40 AM | 3.794444 | 573.234 | 92.399 | Final Shut-In |
| FH | 3/28/2011 11:14:50 AM | 3.813889 | 1742.837 | 92.585 | Final Hydro-static |

GAS FLOWS

Min Into IFP Min Into FFP Gas Flows Pressure Choke

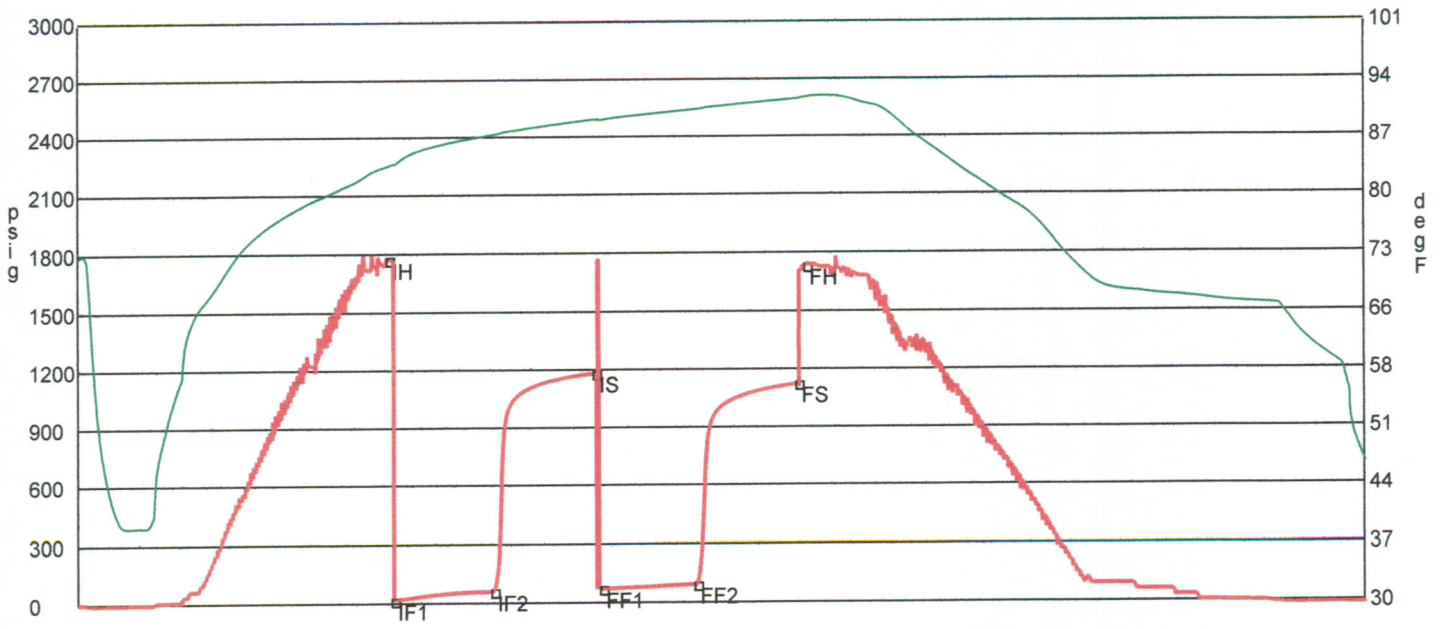
| | | | | |
|----------|--------------------------------|---------------|------------------------|------------------------|
| Company | Baird Oil Company, Inc. | Lease Name | Esslinger Ranch | |
| Address | P. O. Box 428 | Lease # | 4-35 | |
| CSZ | Logan, KS 67646 | Legal Desc | SE SE SW NE | Job Ticket 3419 |
| Attn. | Richard Bell | Section | 35 | Range 22W |
| | | Township | 3S | |
| | | County | Norton | State KS |
| | | Drilling Cont | WW Drilling #8 | |
| Comments | Field: Wildcat | | | |

GENERAL INFORMATION

| | | | |
|---|----------------------------|--|--------------------------------|
| Test # 5 | Test Date 3/28/2011 | Chokes 3/4 | Hole Size 7 7/8 |
| Tester Jimmy Ricketts | | Top Recorder # 11027 | |
| Test Type Conventional Bottom Hole | | Mid Recorder # | |
| Successful Test | | Bott Recorder # w1023 | |
| # of Packers 2.0 | Packer Size 6 3/4 | Mileage 30 | Approved By |
| Mud Type Gel Chem | | Standby Time 0 | |
| Mud Weight 9.2 | Viscosity 63.0 | Extra Equipmnt None | |
| Filtrate 6.4 | Chlorides 1300 | Time on Site 7:00 PM | |
| | | Tool Picked Up 8:00 PM | |
| | | Tool Layed Dwn 1:30 AM | |
| Drill Collar Len 123.0 | | Elevation 2299.00 | Kelley Bushings 2304.00 |
| Wght Pipe Len 0 | | | |
| Formation Lansing G | | Start Date/Time 3/28/2011 7:45 PM | |
| Interval Top 3610.0 | Bottom 3622.0 | End Date/Time 3/29/2011 2:06 AM | |
| Anchor Len Below 12.0 | Between 0 | | |
| Total Depth 3622.0 | | | |
| Blow Type Weak blow building to strong blow 18 minutes into initial flow period. 1 1/2 inch blow back during initial shut-in period. Weak blow building to strong blow 24 minutes into final flow period. 2 inch blow back during final shut-in period. Times: 30, 30, 30, 30. API gravity was 30. 1.9 barrels recovery during test. | | | |

RECOVERY

| Feet | Description | Gas | Oil | Water | Mud |
|------------|-------------------|--------|------------|--------|------------|
| 180 | Clean oil | 0% 0ft | 100% 180ft | 0% 0ft | 0% 0ft |
| 40 | Heavy mud cut oil | 0% 0ft | 63% 25.2ft | 0% 0ft | 37% 14.8ft |
| DST Fluids | 0 | | | | |



| | Date | Time | Pressure | Temp | |
|-----|-----------------------|----------|----------|--------|----------------------|
| IH | 3/28/2011 9:16:50 PM | 1.530556 | 1771 | 83.305 | Initial Hydro-static |
| IF1 | 3/28/2011 9:18:20 PM | 1.555556 | 14.644 | 83.481 | Initial Flow (1) |
| IF2 | 3/28/2011 9:47:50 PM | 2.047222 | 58.727 | 87.095 | Initial Flow (2) |
| IS | 3/28/2011 10:18:10 PM | 2.552778 | 1180.914 | 88.988 | Initial Shut-In |
| FF1 | 3/28/2011 10:20:10 PM | 2.586111 | 70.735 | 88.941 | Final Flow (1) |
| FF2 | 3/28/2011 10:48:10 PM | 3.052778 | 91.449 | 90.199 | Final Flow (2) |
| FS | 3/28/2011 11:18:20 PM | 3.555556 | 1123.038 | 91.451 | Final Shut-In |
| FH | 3/28/2011 11:20:50 PM | 3.597222 | 1731.331 | 91.666 | Final Hydro-static |

GAS FLOWS

Min Into IFP Min Into FFP Gas Flows Pressure Choke

| | | | | |
|---------|--------------------------------|---------------|------------------------|------------------------|
| Company | Baird Oil Company, Inc. | Lease Name | Esslinger Ranch | |
| Address | P. O. Box 428 | Lease # | 4-35 | |
| CSZ | Logan, KS 67646 | Legal Desc | SE SE SW NE | Job Ticket 3419 |
| Attn. | Richard Bell | Section | 35 | Range 22W |
| | | Township | 3S | |
| | | County | Norton | State KS |
| | | Drilling Cont | WW Drilling #8 | |

Comments **Field: Wildcat**

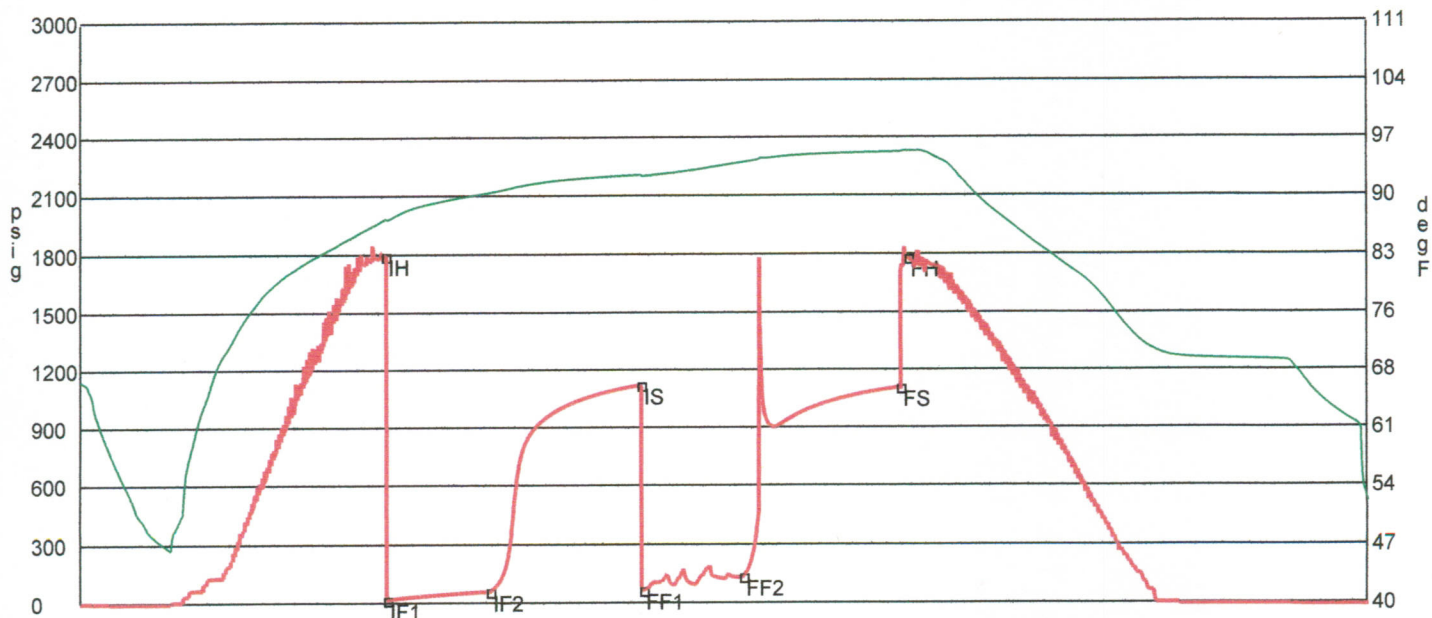
GENERAL INFORMATION

| | | | |
|---|----------------------------|---|--------------------------------|
| Test # 6 | Test Date 3/29/2011 | Chokes 3/4 | Hole Size 7 7/8 |
| Tester Jimmy Ricketts | | Top Recorder # 11027 | |
| Test Type Conventional Bottom Hole | | Mid Recorder # | |
| Successful Test | | Bott Recorder # w1023 | |
| # of Packers 2.0 | Packer Size 6 3/4 | Mileage 30 | Approved By |
| Mud Type Gel Chem | | Standby Time 0 | |
| Mud Weight 9.2 | Viscosity 50.0 | Extra Equipmnt None | |
| Filtrate 64.0 | Chlorides 1400 | Time on Site 10:40 AM | |
| | | Tool Picked Up 11:30 AM | |
| | | Tool Layed Dwn 5:00 PM | |
| Drill Collar Len 123.0 | | Elevation 2299.00 | Kelley Bushings 2304.00 |
| Wght Pipe Len 0 | | | |
| Formation Lansing J | | Start Date/Time 3/29/2011 11:11 AM | |
| Interval Top 3653.0 | Bottom 3687.0 | End Date/Time 3/29/2011 5:30 PM | |
| Anchor Len Below 34.0 | Between 0 | | |
| Total Depth 3687.0 | | | |
| Blow Type Weak blow building to 7 inches initial flow period. Weak blow building to 7 inches final flow period. Accidentally flushed tool at start of final shut-in period. 1/2 blow back during final shut-in period. Times: 30, 45, 31, 45. API gravity was 15. .87 barrel recovery during test. | | | |

RECOVERY

| Feet | Description | Gas | Oil | Water | Mud |
|------|-------------------|--------|------------|--------|------------|
| 30 | Clean oil | 0% 0ft | 100% 30ft | 0% 0ft | 0% 0ft |
| 55 | Heavy mud cut oil | 0% 0ft | 82% 45.1ft | 0% 0ft | 18% 9.9ft |
| 60 | Heavy oil cut mud | 0% 0ft | 42% 25.2ft | 0% 0ft | 58% 34.8ft |

DST Fluids **0**



| | Date | Time | Pressure | Temp | |
|-----|-----------------------|----------|----------|--------|----------------------|
| IH | 3/29/2011 12:40:20 PM | 1.488889 | 1794.833 | 86.864 | Initial Hydro-static |
| IF1 | 3/29/2011 12:40:50 PM | 1.497222 | 15.064 | 86.777 | Initial Flow (1) |
| IF2 | 3/29/2011 1:11:10 PM | 2.002778 | 57.367 | 90.057 | Initial Flow (2) |
| IS | 3/29/2011 1:55:40 PM | 2.744444 | 1118.618 | 92.226 | Initial Shut-In |
| FF1 | 3/29/2011 1:56:20 PM | 2.755556 | 63.525 | 92.104 | Final Flow (1) |
| FF2 | 3/29/2011 2:25:50 PM | 3.247222 | 133.869 | 93.731 | Final Flow (2) |
| FS | 3/29/2011 3:12:10 PM | 4.019444 | 1105.678 | 94.966 | Final Shut-In |
| FH | 3/29/2011 3:14:30 PM | 4.058333 | 1780.487 | 95.083 | Final Hydro-static |

GAS FLOWS

Min Into IFP Min Into FFP Gas Flows Pressure Choke

Company **Baird Oil Company, Inc.**
 Address **P. O. Box 428**
 CSZ **Logan, KS 67646**
 Attn. **Richard Bell**

Lease Name **Esslinger Ranch**
 Lease # **4-35**
 Legal Desc **SE SE SW NE**
 Section **35**
 Township **3S**
 County **Norton**
 Drilling Cont **WW Drilling #8**

Job Ticket **3419**
 Range **22W**
 State **KS**

Comments **Field: Wildcat**

GENERAL INFORMATION

Test # **7** Test Date **3/30/2011**
 Tester **Jimmy Ricketts**
 Test Type **Conventional Bottom Hole**
Successful Test

of Packers **2.0** Packer Size **6 3/4**

Mud Type **Gel Chem**
 Mud Weight **9.2** Viscosity **50.0**
 Filtrate **6.4** Chlorides **1400**

Drill Collar Len **123.0**
 Wght Pipe Len **0**

Formation **Lansing K**
 Interval Top **3687.0** Bottom **3710.0**
 Anchor Len Below **23.0** Between **0**
 Total Depth **3710.0**

Blow Type **Weak blow building to strong blow 12 minutes into initial flow period. 7 inch blow back during initial shut-in period. Weak blow building to strong blow 12 minutes into final flow period. 10 inch blow back during final shut-in period. Times: 29, 45, 30, 45. API gavity was 32. 3.6 barrels recovery during test.**

Chokes **3/4**
 Top Recorder # **11027**
 Mid Recorder #
 Bott Recorder # **w1023**

Mileage **30**
 Standby Time **0**
 Extra Equipmnt **None**
 Time on Site **11:00 PM**
 Tool Picked Up **12:20 AM**
 Tool Layed Dwn **6:20 AM**

Elevation **2299.00** Kelley Bushings **2304.00**

Start Date/Time **3/30/2011 12:01 AM**
 End Date/Time **3/30/2011 7:15 AM**

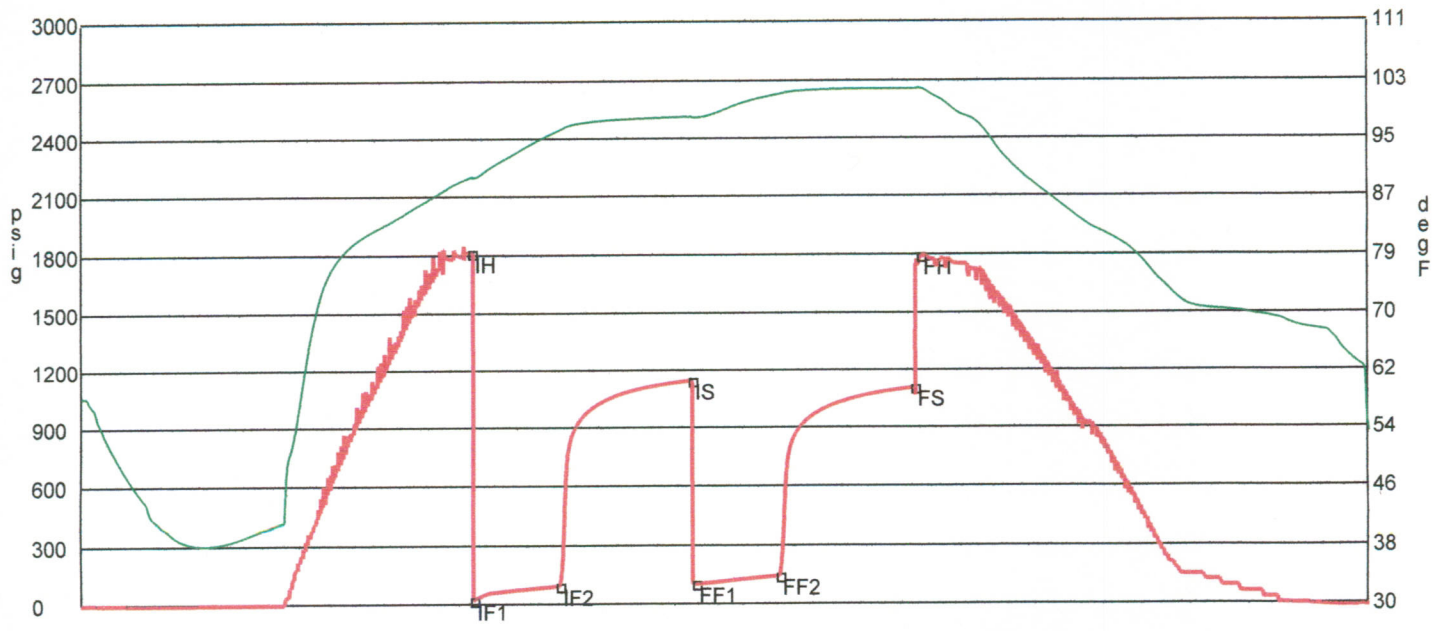
Hole Size **7 7/8**

Approved By

RECOVERY

| Feet | Description | Gas | Oil | Water | Mud |
|------|-------------------------|------------|------------|--------|------------|
| 280 | Gas in pipe | 100% 280ft | 0% 0ft | 0% 0ft | 0% 0ft |
| 230 | Gassy clean oil | 0% 0ft | 100% 230ft | 0% 0ft | 0% 0ft |
| 50 | Gassy heavy mud cut oil | 4% 2ft | 63% 31.5ft | 0% 0ft | 33% 16.5ft |
| 60 | Gassy heavy oil cut mud | 15% 9ft | 36% 21.6ft | 0% 0ft | 49% 29.4ft |

DST Fluids **0**



| | Date | Time | Pressure | Temp | |
|-----|----------------------|----------|----------|---------|----------------------|
| IH | 3/30/2011 2:12:30 AM | 2.191667 | 1812.4 | 89.435 | Initial Hydro-static |
| IF1 | 3/30/2011 2:13:10 AM | 2.202778 | 18.787 | 89.335 | Initial Flow (1) |
| IF2 | 3/30/2011 2:42:10 AM | 2.686111 | 92.001 | 95.987 | Initial Flow (2) |
| IS | 3/30/2011 3:26:50 AM | 3.430556 | 1144.897 | 97.86 | Initial Shut-In |
| FF1 | 3/30/2011 3:28:10 AM | 3.452778 | 102.202 | 97.737 | Final Flow (1) |
| FF2 | 3/30/2011 3:56:30 AM | 3.925 | 142.84 | 100.998 | Final Flow (2) |
| FS | 3/30/2011 4:42:10 AM | 4.686111 | 1105.99 | 101.69 | Final Shut-In |
| FH | 3/30/2011 4:44:10 AM | 4.719444 | 1792.749 | 101.774 | Final Hydro-static |

GAS FLOWS

Min Into IFP Min Into FFP Gas Flows Pressure Choke

Company **Baird Oil Company, Inc.**
 Address **P. O. Box 428**
 CSZ **Logan, KS 67646**
 Attn. **Richard Bell**

Lease Name **Esslinger Ranch**
 Lease # **4-35**
 Legal Desc **SE SE SW NE**
 Section **35**
 Township **3S**
 County **Norton**
 Drilling Cont **WW Drilling #8**

Job Ticket **3419**
 Range **22W**
 State **KS**

Comments **Field: Wildcat**

GENERAL INFORMATION

Test # **8** Test Date **3/30/2011**
 Tester **Jimmy Ricketts**
 Test Type **Conventional Bottom Hole**
Successful Test

of Packers **2.0** Packer Size **6 3/4**

Mud Type **Gel Chem**
 Mud Weight **9.2** Viscosity **50.0**
 Filtrate **6.4** Chlorides **1400**

Drill Collar Len **123.0**
 Wght Pipe Len **0**

Formation **Precambrian**
 Interval Top **3758.0** Bottom **3783.0**
 Anchor Len Below **25.0** Between **0**
 Total Depth **3783.0**
 Blow Type **Weak blow building to 1 inch initial flow period. Times: 30, 31.**

Chokes **3/4**
 Top Recorder # **11027**
 Mid Recorder #
 Bott Recorder # **w1023**

Mileage **30**
 Standby Time **0**
 Extra Equipmnt **None**
 Time on Site **7:30 PM**
 Tool Picked Up **8:30 PM**
 Tool Layed Dwn **12:10 AM**

Elevation **2299.00** Kelley Bushings **2304.00**

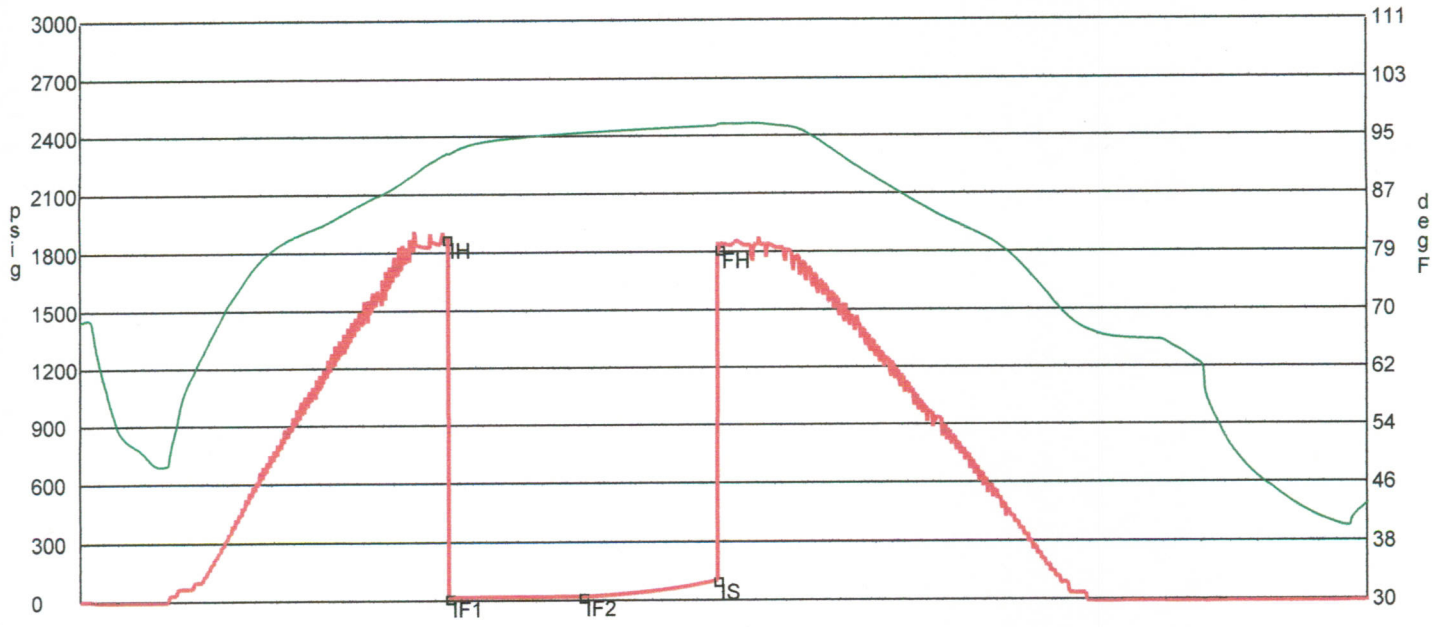
Start Date/Time **3/30/2011 8:13 PM**
 End Date/Time **3/31/2011 1:07 AM**

Hole Size **7 7/8**

Approved By

RECOVERY

| Feet | Description | Gas | Oil | Water | Mud |
|------------|-----------------------------|----------|-------|--------|----------|
| 25 | Drilling mud with trace oil | 0% 0ft | trace | 0% 0ft | 100%25ft |
| DST Fluids | | 0 | | | |



| | Date | Time | Pressure | Temp | |
|-----|-----------------------|----------|----------|--------|----------------------|
| IH | 3/30/2011 9:36:10 PM | 1.386111 | 1871.737 | 92.38 | Initial Hydro-static |
| IF1 | 3/30/2011 9:36:40 PM | 1.394444 | 14.709 | 92.345 | Initial Flow (1) |
| IF2 | 3/30/2011 10:07:10 PM | 1.902778 | 18.725 | 95.247 | Initial Flow (2) |
| IS | 3/30/2011 10:38:00 PM | 2.416667 | 101.632 | 96.171 | Initial Shut-In |
| FH | 3/30/2011 10:38:30 PM | 2.425 | 1813.33 | 96.402 | Final Hydro-static |

GAS FLOWS

Min Into IFP Min Into FFP Gas Flows Pressure Choke