



DRILL STEM TEST REPORT

Prepared For: **F.G Holl**

9431 East Central Suite 100
Wichita Kansas 67206

ATTN: Ryan Greenbaum

8-19s-14w -Barton

Gcom Trust

Start Date: 2011.10.04 @ 04:15:00

End Date: 2011.10.04 @ 09:03:00

Job Ticket #: 17221 DST #: 2

Superior Testers Enterprises LLC
PO Box 138 Great Bend KS 67530
1-800-792-6902

Printed: 2011.10.04 @ 21:24:27

F.G Holl
Gcom Trust
8-19s-14w -Barton
DST # 2
Lansing E&F
2011.10.04



DRILL STEM TEST REPORT

F.G Holl
 9431 East Central Suite 100
 Wichita Kansas 67206
 ATTN: Ryan Greenbaum

Gcom Trust
8-19s-14w -Barton
 Job Ticket: 17221 **DST#: 2**
 Test Start: 2011.10.04 @ 04:15:00

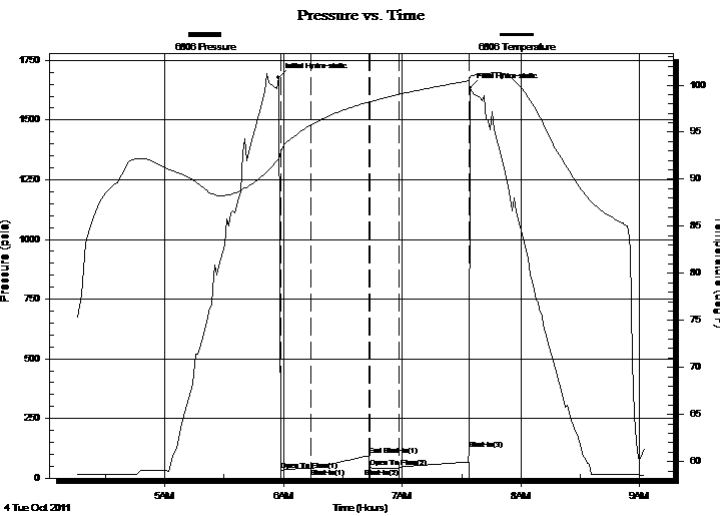
GENERAL INFORMATION:

Formation: **Lansing E&F**
 Deviated: No Whipstock: ft (KB)
 Time Tool Opened: 05:58:30
 Time Test Ended: 09:03:00
 Interval: **3295.00 ft (KB) To 3315.00 ft (KB) (TVD)**
 Total Depth: 3315.00 ft (KB) (TVD)
 Hole Diameter: 7.88 inches Hole Condition: Fair
 Test Type: Conventional Bottom Hole (Initial)
 Tester: Dustin Ellis
 Unit No: 3315-GB-20
 Reference Elevations: 1919.00 ft (KB)
 1911.00 ft (CF)
 KB to GR/CF: 8.00 ft

Serial #: 6806 Outside

Press @ RunDepth: 39.22 psia @ 3297.16 ft (KB) Capacity: 5000.00 psia
 Start Date: 2011.10.04 End Date: 2011.10.04 Last Calib.: 2011.10.04
 Start Time: 04:15:00 End Time: 09:03:00 Time On Btm: 2011.10.04 @ 05:57:30
 Time Off Btm: 2011.10.04 @ 07:34:30

TEST COMMENT: 1st open 15 minutes Weak surface blow
 1st shut in 30 minutes No blow back
 2nd open 15 minutes Weak surface blow
 2nd shut in 30 minutes No blow back



PRESSURE SUMMARY

Time (Min.)	Pressure (psia)	Temp (deg F)	Annotation
0	1678.14	92.19	Initial Hydro-static
1	31.57	92.92	Open To Flow (1)
17	39.22	95.75	Shut-In(1)
46	93.90	98.19	End Shut-In(1)
46	44.44	98.21	Open To Flow (2)
61	43.21	99.00	Shut-In(2)
97	120.86	100.49	Shut-In(3)
97	1634.95	100.87	Final Hydro-static

Recovery

Length (ft)	Description	Volume (bbl)
15.00	Oil cut mud oil 5% mud 95%	0.21

Gas Rates

Choke (inches)	Pressure (psia)	Gas Rate (Mcf/d)



DRILL STEM TEST REPORT

F.G Holl
 9431 East Central Suite 100
 Wichita Kansas 67206
 ATTN: Ryan Greenbaum

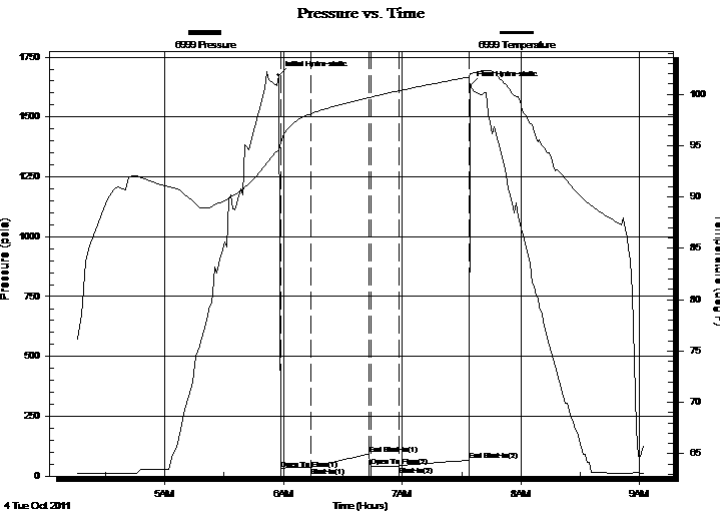
Gcom Trust
8-19s-14w -Barton
 Job Ticket: 17221 **DST#: 2**
 Test Start: 2011.10.04 @ 04:15:00

GENERAL INFORMATION:

Formation: **Lansing E&F**
 Deviated: No Whipstock: ft (KB)
 Time Tool Opened: 05:58:30
 Time Test Ended: 09:03:00
 Interval: **3295.00 ft (KB) To 3315.00 ft (KB) (TVD)**
 Total Depth: 3315.00 ft (KB) (TVD)
 Hole Diameter: 7.88 inches Hole Condition: Fair
 Test Type: Conventional Bottom Hole (Initial)
 Tester: Dustin Ellis
 Unit No: 3315-GB-20
 Reference Elevations: 1919.00 ft (KB)
 1911.00 ft (CF)
 KB to GR/CF: 8.00 ft

Serial #: 6999 Outside
 Press @ RunDepth: 66.54 psia @ 3297.16 ft (KB) Capacity: 5000.00 psia
 Start Date: 2011.10.04 End Date: 2011.10.04 Last Calib.: 2011.10.04
 Start Time: 04:15:00 End Time: 09:03:00 Time On Btm: 2011.10.04 @ 05:57:30
 Time Off Btm: 2011.10.04 @ 07:34:30

TEST COMMENT: 1st open 15 minutes Weak surface blow
 1st shut in 30 minutes No blow back
 2nd open 15 minutes Weak surface blow
 2nd shut in 30 minutes No blow back



PRESSURE SUMMARY

Time (Min.)	Pressure (psia)	Temp (deg F)	Annotation
0	1674.78	94.64	Initial Hydro-static
1	30.04	95.27	Open To Flow (1)
17	37.69	98.09	Shut-In(1)
46	92.09	99.66	End Shut-In(1)
47	40.39	99.71	Open To Flow (2)
62	41.82	100.33	Shut-In(2)
97	66.54	101.68	End Shut-In(2)
97	1631.04	101.97	Final Hydro-static

Recovery

Length (ft)	Description	Volume (bbl)
15.00	Oil cut mud oil 5% mud 95%	0.21

Gas Rates

Choke (inches)	Pressure (psia)	Gas Rate (Mcf/d)



DRILL STEM TEST REPORT

TOOL DIAGRAM

F.G Holl
 9431 East Central Suite 100
 Wichita Kansas 67206
 ATTN: Ryan Greenbaum

Gcom Trust
8-19s-14w -Barton
 Job Ticket: 17221 **DST#: 2**
 Test Start: 2011.10.04 @ 04:15:00

Tool Information

Drill Pipe:	Length: 3301.00 ft	Diameter: 3.80 inches	Volume: 46.30 bbl	Tool Weight: 2000.00 lb
Heavy Wt. Pipe:	Length: 0.00 ft	Diameter: 0.00 inches	Volume: 0.00 bbl	Weight set on Packer: 20000.00 lb
Drill Collar:	Length: 0.00 ft	Diameter: 0.00 inches	Volume: 0.00 bbl	Weight to Pull Loose: 42000.00 lb
			<u>Total Volume: 46.30 bbl</u>	Tool Chased 0.00 ft
Drill Pipe Above KB:	28.61 ft			String Weight: Initial 42000.00 lb
Depth to Top Packer:	3295.00 ft			Final 42000.00 lb
Depth to Bottom Packer:	ft			
Interval between Packers:	20.00 ft			
Tool Length:	42.61 ft			
Number of Packers:	2	Diameter: 6.25 inches		

Tool Comments:

Tool Description	Length (ft)	Serial No.	Position	Depth (ft)	Accum. Lengths
------------------	-------------	------------	----------	------------	----------------

P.O. Sub	0.31			3272.70	
C.O. Sub	0.31			3273.01	
P.O. Sub	0.31			3273.32	
Recorder	1.80		Fluid	3275.12	
Conv. S.I. Tool	1.52			3276.64	
Sampler	1.10			3277.74	
HMV	2.10			3279.84	
Recorder	1.80		Inside	3281.64	
Telemetry Tool	7.01			3288.65	
Jars	2.05			3290.70	
Bypass Hanger	0.32			3291.02	
Safety Joint	0.78			3291.80	
Packer	1.78			3293.58	22.61 Bottom Of Top Packer
Packer	1.42			3295.00	
Stubb	0.36			3295.36	
Recorder Carrier	1.80			3297.16	
Recorder	0.00	6999	Outside	3297.16	
Recorder	0.00	6806	Outside	3297.16	
Perforations	12.33			3309.49	
Bypass Receiver	0.85			3310.34	
Blank Spacing	0.00			3310.34	
Stubb	0.36			3310.70	20.00 Tool Interval
Packer	1.42			3312.12	
Bypass Hanger	0.30			3312.42	
Recorder	1.80	6663	Below	3314.22	
Collar	0.00			3314.22	



DRILL STEM TEST REPORT

FLUID SUMMARY

F.G Holl
9431 East Central Suite 100
Wichita Kansas 67206
ATTN: Ryan Greenbaum

Gcom Trust
8-19s-14w -Barton
Job Ticket: 17221 **DST#: 2**
Test Start: 2011.10.04 @ 04:15:00

Mud and Cushion Information

Mud Type: Invert	Cushion Type:	Oil API:	deg API
Mud Weight: 9.00 lb/gal	Cushion Length: ft	Water Salinity:	ppm
Viscosity: 53.00 sec/qt	Cushion Volume: bbl		
Water Loss: 7.60 in ³	Gas Cushion Type:		
Resistivity: ohm.m	Gas Cushion Pressure: psia		
Salinity: 6800.00 ppm			
Filter Cake: 1.00 inches			

Recovery Information

Recovery Table

Length ft	Description	Volume bbl
15.00	Oil cut mud oil 5% mud 95%	0.210

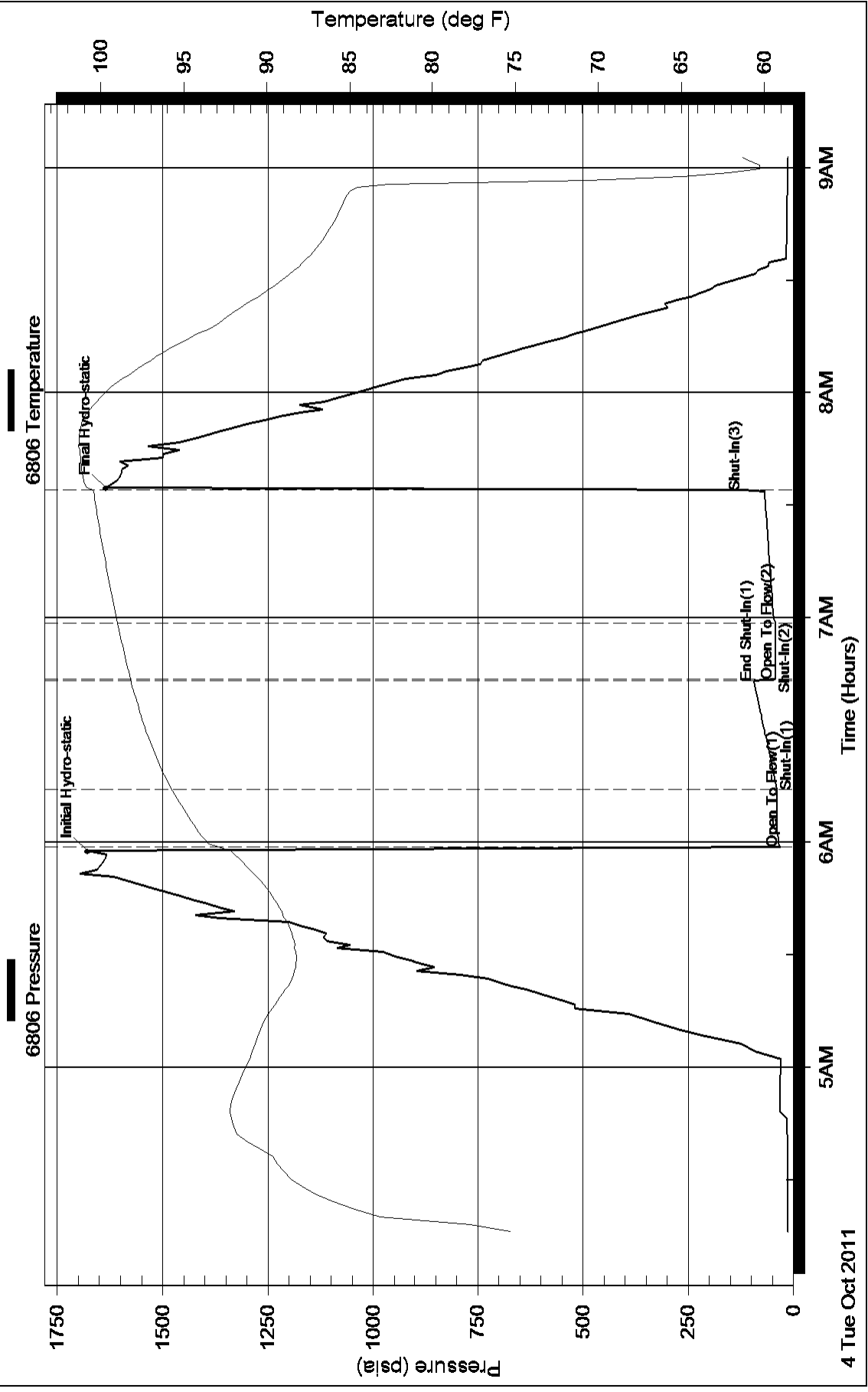
Total Length: 15.00 ft Total Volume: 0.210 bbl

Num Fluid Samples: 0 Num Gas Bombs: 0 Serial #:

Laboratory Name: Laboratory Location:

Recovery Comments:

Pressure vs. Time



Pressure vs. Time

