



Current

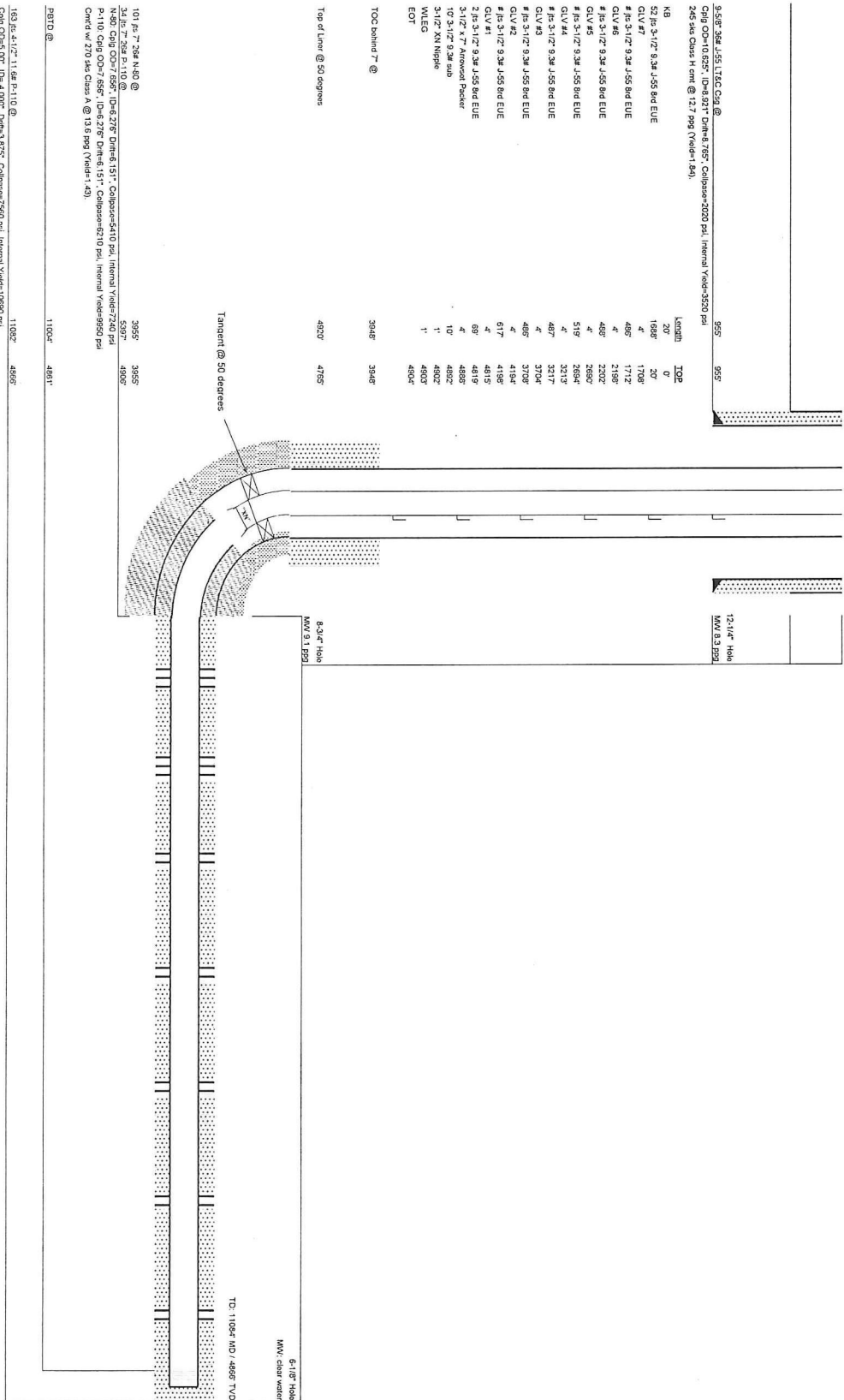
Spud: 9/5/2011

Field: Waldron West
 County: Barber
 State: Kansas
 Well: Robert 1-13H
 Location: SEC 13, TWP 35N, RGE 11W
 KB: 1325'
 GL: 1303'

Wellbore Schematic
 1500-723-75601
 API No.

Original Completion (10-13-2011) X
 Current
 Proposed

Well Bore Data MD TVD



KB	Length	TOP
52 # 3-1/2" 9.3# J-55 8nd EUE	20'	0'
CLV #7	1688'	20'
# 1# 3-1/2" 9.3# J-55 8nd EUE	4'	1708'
CLV #8	466'	1712'
# 1# 3-1/2" 9.3# J-55 8nd EUE	4'	2186'
CLV #9	466'	2202'
# 1# 3-1/2" 9.3# J-55 8nd EUE	4'	2680'
CLV #10	519'	2684'
# 1# 3-1/2" 9.3# J-55 8nd EUE	4'	3213'
CLV #11	487'	3217'
# 1# 3-1/2" 9.3# J-55 8nd EUE	4'	3704'
CLV #12	486'	3708'
# 1# 3-1/2" 9.3# J-55 8nd EUE	4'	4184'
CLV #13	617'	4188'
# 1# 3-1/2" 9.3# J-55 8nd EUE	4'	4815'
CLV #14	69'	4819'
# 1# 3-1/2" 9.3# J-55 8nd EUE	4'	4885'
CLV #15	10'	4892'
# 1# 3-1/2" 9.3# sub	1'	4902'
WILEG	1'	4903'
EOT		4904'

TOC behind 7" @ 3948' 3948'

Top of liner @ 50 degrees 4920' 4755'

101 # 7" 25# N-80 @ 3995' 3855'

34 # 7" 25# P-110 @ 4397' 4896'

8 # 6" 25# CO-1750S 1D-6-278' Dimes 151' Collapse=410 psi, Internal Yield=240 psi

2 # 3" 20' CO-1650 1D-6-218' Dimes 151' Collapse=2710 psi, Internal Yield=950 psi

Conc W 2" 24' Class A @ 10' 895' Yield= 140'

PERD @ 11004' 4881'

11082' 4885'

183 # 4-1/2" 11.8# P-110 @ 11082'

CHGS CO-5-000 1D-4-000' Dims 3-875' Collapse=7560 psi, Internal Yield=10950 psi

Conc W 6" 36' Class A @ 130' 895' Yield= 140'