

# WELLSITE GEOLOGIST'S REPORT

J. R. Husted  
Consulting Geologist



Scale 1:240 (5"=100') Imperial

Well Name: REECE UNIT NO. 1-32  
Location: SEC 32-T22S-R21W  
Licence Number: 15-083-21,725-00-00  
Spud Date: OCT-15-2011  
Surface Coordinates: 2400' FNL,2000'FEL,90'S.,20' WEST OF C S/2 SW NE  
Region: HODGEMAN CO  
Drilling Completed: OCT-25-2011

Bottom Hole Vertical Hole  
Coordinates:  
Ground Elevation (ft): 2229' K.B. Elevation (ft): 2240'  
Logged Interval (ft): 2400' To: 4581' Total Depth (ft): 4581'  
Formation: MISSISSIPPI  
Type of Drilling Fluid: Starch, Chemical Premix (Displaced)

Printed by MUD.LOG from WellSight Systems 1-800-447-1534 [www.WellSight.com](http://www.WellSight.com)

## OPERATOR:

Company: F.G. HOLL COMPANY LLC  
Address: 9431 E. CENTRAL STE 100  
WICHITA,KANSAS 67206-2563

## DRILLING CONTRACTOR:

DUKE RIG #5  
DRILL PIPE 4.5 X H; DRILL COLLARS 6.25 @ 575'; BIT #1 12 AND 1/4 JZ HA-1PGA @ 524';BIT #2 7 7/8 VAREL HE-2IMSV @ 4498';BIT #3 7 7/8 HE 29HGRV-JETS 14-14-15-ROTARY TD =4581' AND LTD = 4584'; MIRT 10-15-2011;KELLY BUSHING 11' ABOVE SEA LEVEL.

## SURFACE CASING:

SURFACE CASING SET AT 8 5/8 IN AT 522' CMT 280 SAXS; PRODUCTION SET AT 4563' TOTAL 175 SAXS

## CIRCULATION SYSTEM:

MUD PUMP-NATIONAL-K-500;6.0 X 15;SPM-54-PUMP PRESSURE 1000-STEEL PITS-MUD-CO-JASON WHITING-GREAT BEND

## GAS DETECTION SYSTEM:

MBC WELL LOGGING AND LEASING  
ANALOG HOTWIRE AND CHROMATOGRAPH

## OPEN HOLE LOGS:

DN (PE), DI (SP), ML: Sonic; . LogTech, Hays, KS, K Bange. Log total depth (4584') rotary depth (4581')

COMPLETION:

PRODUCTION CASING SET ON MISSISSIPPI

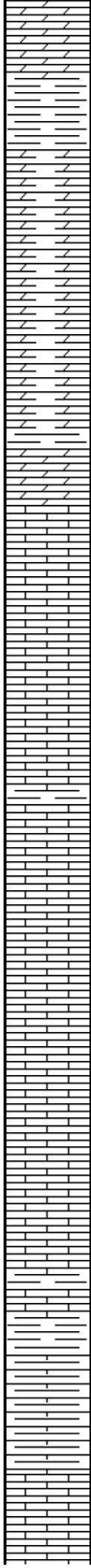
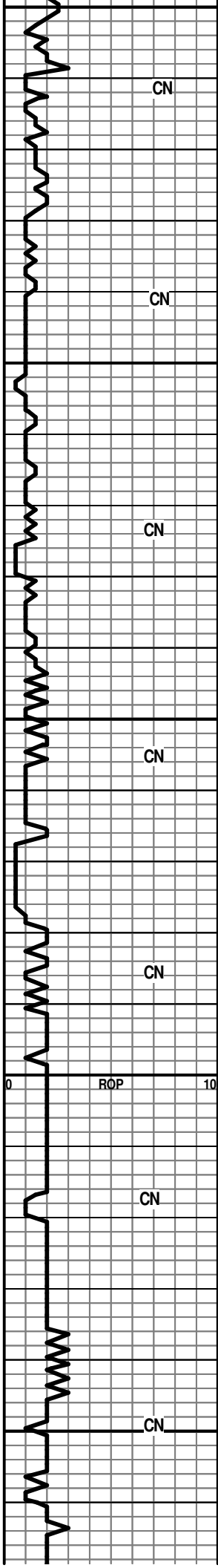
WELLSITE GEOLOGIST:

Rene Husted  
 600 N. WINWOOD ST  
 GARDNER, KS 66030  
 (913) 908-3390

ROP ROP (min/ft) —		DST	Lithology	Porosity and Show	Depth	Geological Descriptions	TG, C1-C4 / REMARKS
0	ROP	10			23	TOPS ROTARY LOG	
						HEEBNER 3830' 3831' (-1591')	
						TORONTO 3850' 3848' (-1608')	
						DOUGLAS 3859' (-1619')	
						BROWN LS 3904' 3906' (-1666')	
						LANSING 3920' (-1680')	SUPERIOR TESTERS KEN SWINNEY
					2350	B/KC 4272' (-2032')	
						MARMATON 4280' (-2040')	
						PAWNEE 4350' 4352' (-2112')	
						FT SCOTT 4423' (-2183')	
						L. CHEROKEE 4446' (-2206')	
						MISSISSIPPI 4496' 4494' (-2254')	SURVEYS 524' @ .44 DEG 4337' @ .57 DEG 4506' @ 1.08 DEG
					2400	DOLO-TN-F-GRN-SLI SUCRO-TR INTER-GRN POR-TO NO VIS POR-NO VIS GAS BUB W/ ANHY IN SAMPLE	
						DOLO-TN W/BLK SPECS-F-GRN-TR SH IMBD-SLI FOSS-NO VIS POR	WT. 9.6 VIS 35
						SH-GRY/RD-BLKY	
						WINFIELD 2442' (-202')	
						DOLO-CRM-F-XLN-BRIT-SLI CHLKY-FOSS-NO VIS POR	
					0		

GEOLOGIST  
ON SITE AT  
2400'

CN



245  
2500  
2550  
2600  
2650

DOLO A.A.

DOLO-TN-F-XLN-HD-DNS TR SH IMBD

DOLO-TN-M-XLN-BRIT-TR FOSS-TR SH-NO VIS POR

**TOWANDA 2512' (-272')**

DOLO-CRM-F-XLN-BRIT-FOSS-OOL-TR PP POR-TO NO VIS POR

WT. 9.6  
VIS 33

LS-CRM-F-XLN-OOL-FR TO GD OOL-MOLDIC POR-NO VIS SHOW

LS-OFF WHT-F-XLN-TR CHLK-TR SH-NO VIS POR

LS A.A.

LS-OFF WHT-F-XLN-OOL-FR TO GD OOL-MOLDIC POR-NO VIS GAS BUB

HW -4 UNIT GAS INCRS  
@ 2586'

LS-OFF WHT-F-XLN-FOSS-HD-DNS

LS-OFF WHT/GRY-F-XLN-SHLY-NO VIS POR

LS-A.A.

LS-OFF WHT-F-XLN-OOL-SLI CHLKY-TR INTER-GRN /PP POR-NO VIS SHOW

**B/FLORENCE 2636' (-396')**

POOR SAMPLES

POOR SAMPLES

CN

CN

CN

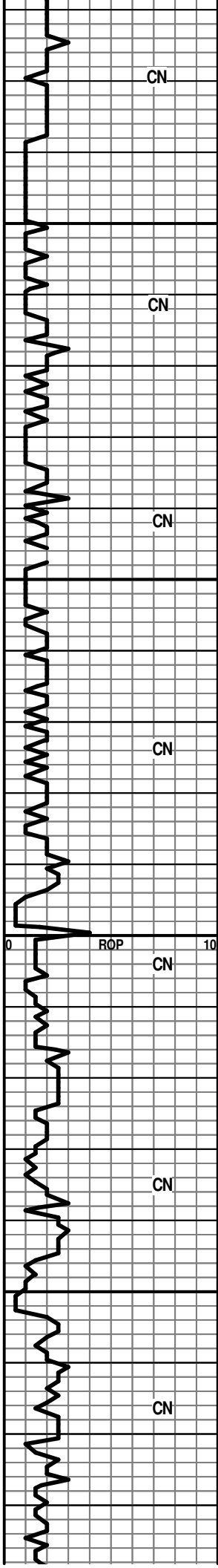
CN

CN

CN

CN

ROP



CN

CN

CN

CN

CN

CN

CN

**COUNCIL GROVE 2682' (-442')**

POOR SAMPLES

LOST CIRCULATION

2700

SH-GRY-SFT-WAXY/SLTY

LS-GRY-F-XLN-SH-LT GRY-TR FOSS-NO VIS POR

LS-TN/GRY-M-XLN-FOSS-TR SH-PR INTER-XLN POR-NO VIS GAS BUB

HW-8 UNIT GAS INCRS @ 2726'

LS-GRY-F-XLN-SHLY-TR FOSS-DNS

2750

LS-A.A.

LS/SH PYR XLS IN TRAY

LS-GRY-F-XLN-SHLY

LS-TN-F-XLN-OOL-HD-DNS

LS-TN-F-XLN-OOL-FR TO GD-OOL-MOLDIC POR-NO VIS SHOW

2800

SH-GRY-BLKY-LMY

LS-GRY-M-XLN-HD-SHLY

SH-GRY-BLKY-LMY-FOSS

**COTTONWOOD 2840' (-600')**

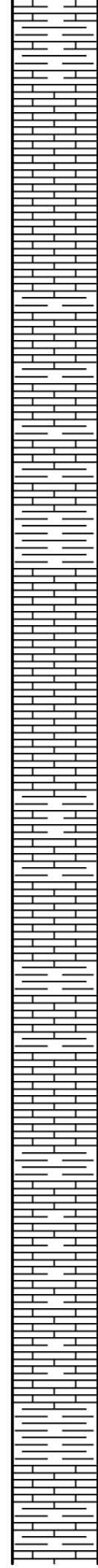
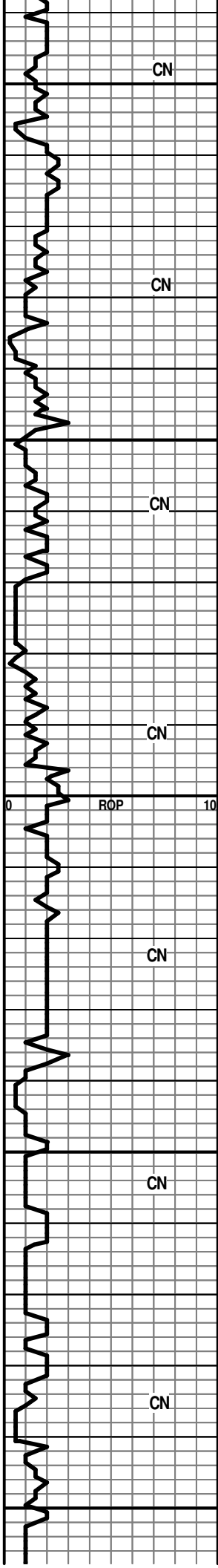
LS-OFF WHT-F-XLN-OOL-FOSS-FR TO GD OOL-MOLDIC -W TR INTER-XLN POR-NO VIS SHOW

2850

LS-GRY-F-XLN-FOSS-HD-DNS

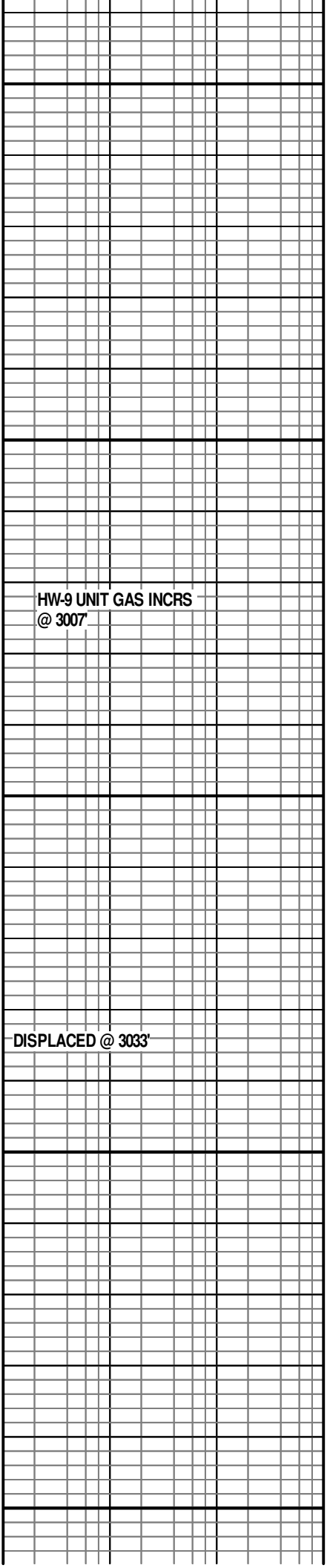
SH-GRY-LMY-BLKY

LS-GRY-F-XLN-FOSS-NO VIS POR W/ TR SH-RED-SFT-SLTY



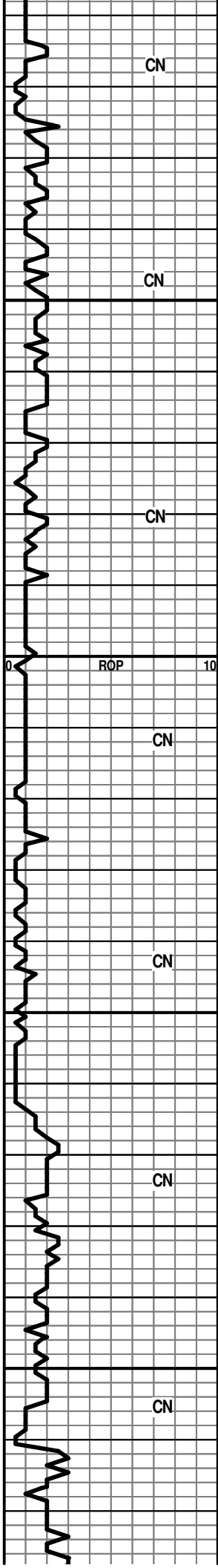
2900  
2950  
3000  
3050  
3100

**NEVA 2900' (-660')**  
 LS-OFF WHT-F-XLN-CHLKY IP-FOSS-TR INTER-XLN  
 POR-NO VIS SHOW  
  
 LS-OFF WHT-F-XLN-HD-DNS TR FOSS  
  
 LS/SH  
  
 LS-OFF WHT-GRY-F-XLN-FOSS/OOL-FR INTER-XLN/TR  
 OOL-MOLDIC POR-NO VIS SHOW  
  
 SH-RED-SFT-SLTY  
  
**RED EAGLE 2969' (-729')**  
 LS-GRY-F-XLN/GRN-FOSS FRAGS-PR TO FR  
 INTER-GRN/FOSS POR-TR SH LT GRY IMBD-NO VIS  
 GAS BUB  
  
 LS-GRY-F-XLN-SHLY-FOSS-HD-DNS W/ SH-LT  
 GRY-V-SFT-GUMMY  
  
 LS-GRY-F-XLN-HD-DNS W/  
 SH-GRY-SFT-V-FOSS-BRY-SPONGES AND TR SH BLK  
 CARB  
  
 LS A.A.  
  
 LS-GRY-V-F-XLN-HD-DNS  
  
 LS-OFF WHT/GRY-F-XLN-BRIT TO HD-CHLKY-NO VIS  
 POR-NO VIS FLOR-NO VIS SHOW  
  
 LS-GRY-F-XLN-V-SHLY-FOSS-SHELLS-TR INTER-PRT  
 POR TO NO VIS POR-NO VIS FLOR  
  
 SH-DK-GRY-LMY-FOSS  
  
 LS-OFF WHT-F-XLN-SNDYTEX-CHLKY-FOSS-OOL-TR  
 INTER-XLN TO NO VIS POR-DULL WHT MIN FLOR-NO  
 VIS SHOW  
  
 LS A.A.



HW-9 UNIT GAS INCRS  
 @ 3007

DISPLACED @ 3033'



CN

CN

CN

ROP

CN

CN

CN

CN

3150

3200

3250

3300

**WABAUNSEE 3124' (-884')**

LS-OFF WHT-F-XLN-BRIT TO HD-TR FOSS-NO VIS  
 POR-DULL WHT MIN FLOR-NO VIS SHOW

WT. 8.5  
 VIS 60  
 LCM #2

SH-GRY-BLKY-FOSS

LS-CRM-F-XLN-FOSS-HD-DNS TR  
 CHRT-GRY-OPQ-FRSH IN TRAY

LS-OFF WHT/YEL-F-XLN-TR  
 CHLK-BRIT-V-FOSS-OOL-(COQUINA)-TR  
 INTER-XLN.PRT POR-DULL WHT FLOR-NO VIS SHOW

SH-LT GRY-BLKY-WAXY

SH-GRY-SPLNTY

SH-LT GRN-V-SFT-V-SLTY

SS-FRSTY WHT/GRN-V-F-GRN-V-FRI-RND-WELL  
 SRTED-CHLKY-V-SM GLAU/HEM XLS IMBD THRU-PR  
 INTER-GRN POR-NO VIS FLOR-NO VIS SHOW

WT. 8.5  
 VIS 52  
 LCM #3

SLTSS-FRSTY GRY-V-F-GRN-SHLY-MICA-GLAU-HEM

**STOTLER 3264' (-1024')**

LS-OFF WHT-F-XLN-HD-DNS

LS-YEL/GRY-F-XLN-FOSS-SHELLS-HD-DNS

WT. 8.6  
 VIS 51  
 LCM #3

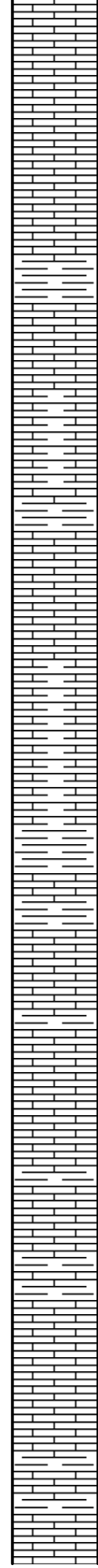
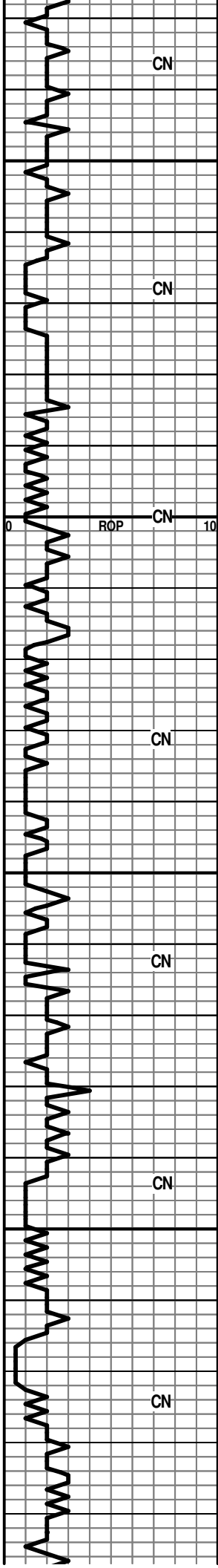
SH-GRN/GRY-BLKY-SLTY

SS-FRSTY WHT-M-GRN-TT TO FRI-RNED-WELL  
 SRTED-CLEAN W/ MICA/GLAU/HEM IMBD-PR TO  
 FR-INTER-GRN POR-NO VIS FLOR-NO VIS SHOW

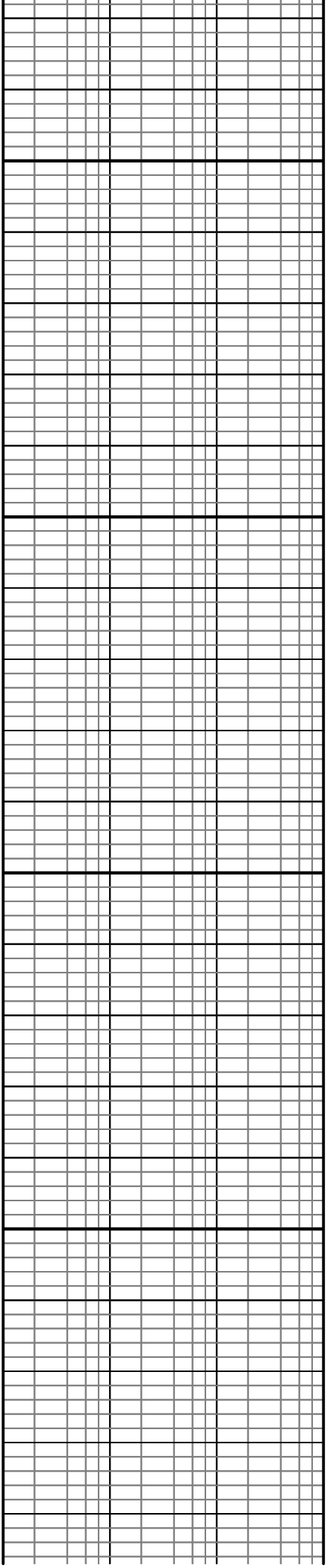
**TARKIO 3312' (-1072')**

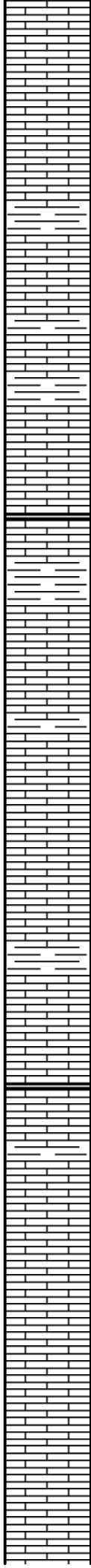
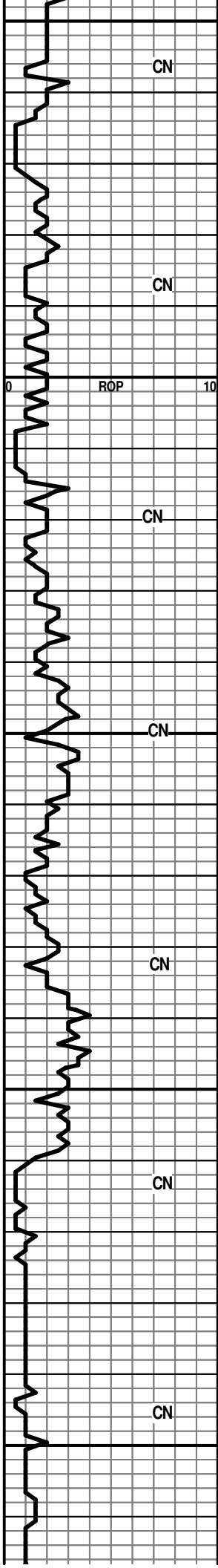
LS-GRY-F-XLN-FOSS-SHLY-PYR XLS IMBD-DNS

WT. 8.6  
 VIS 51  
 LCM #2



3350  
 LS-BRN-V-F-XLN (LITHO)-FOSS-HD-DNS TR PYR XLS  
 IMBD  
 LS-LT BRN-F-XLN-HD-DNS  
 LS-GRN/BRN-F-XLN-HD-DNS  
 LS A.A. W/ CHRT-BLK-OPQ-FRSH-FOSS  
 SH-GRY-BLKY-LMY-FOSS  
 SH-GRY-BLKY-LMY  
 3400 **HOWARD 3402' (-1162')**  
 LS-TN-F-XLN-SNDY TEX-BRIT TO HD-NO VIS POR-NO  
 VIS FLOR-NO VIS SHOW  
 SH-GRY/BLK-BLKY-LMY-FOSS-PYR XLS  
 LS-GRY/OFF WHT-V-F-XLN-FOSS FRAGS-HD-DNS  
 LS-GRY-F-XLN-OOL-HD-DNS  
 3450 **TOPEKA 3450' (-1210')**  
 LS-TN/GRY-F-XLN-FOSS FRAGS-OOL-HD-DNS  
 LS-GRY-V-F-XLN-HD-DNS  
 LS A.A.  
 LS-TN-F-XLN-FOSS-TR OOL IP-CHLK IP-DULL WHT MIN  
 FLOR-NO VIS SHOW  
 3500  
 LS-GRY-F-XLN-FOSS-SHELLS-TR SM PYR XLS  
 IMBD-DULL WHT MIN FLOR-NO VIS SHOW  
 LS-OFF WHT-F-XLN-BLOCKY-BRIT TO HD-DNS  
 LS A.A. CHLKY  
 LS-GRY-F-XLN-FOSS-SHLY-HD-DNS  
 LS-TN-F-XLN-BLOCKY-HD-DNS  
 LS-TN-F-XLN-HD-DNS





3550  
3600  
3650  
3700  
3750

LS-CRM-F-XLN-SNDY-FOSS-CHLKY-DNS

LS-CRM/OFF WHT-F-XLN-SNDY TEX-CHLKY-FOSS  
FRAGS-RARE GLAU XLS-TR PP POR TO NO VIS  
POR-NO VIS FLOR-NO VIS SHOW

LS-GRY-F-XLN-FOSS-GLAU-TR VUG POR TO NO VIS  
POR-NO VIS FLOR

LS-CRM-F-GRN-FOSS-OOL-BRIT-TR PP POR-NO VIS  
FLOR-NO VIS SHOW

LS-CRM-F-XLN-SNDY TEX-CHLKY-FOSS-V-BRIT-TR PP  
TO NO VIS POR-BRITE WHT FLOR-NO VIS CUT

LS-GRY-F-XLN-BLOCKY-HD-DNS W TR FOSS FRAGS

LS A.A. W/ CRS XLN EDGES -SCATT WHT/BLU  
FLOR-NO VIS CUT

LS-TN-V-F-XLN (LITHO) FOSS TRANSLUCENT-HD-DNS

LS-OFF WHT-F-GRN-FOSS-PR INTER-GRN POR-TR BRN  
STN-NO VIS FLOR-NO VIS CUT

LS A.A.

LS-TN-F-XLN-W/ SHELL FOSS-BLOCKY-HD-DNS

LS-TN-V-F-XLN-FOSS-FUS-HD-DNS

LS-TN-F-XLN-OOL-BRIT-DNS

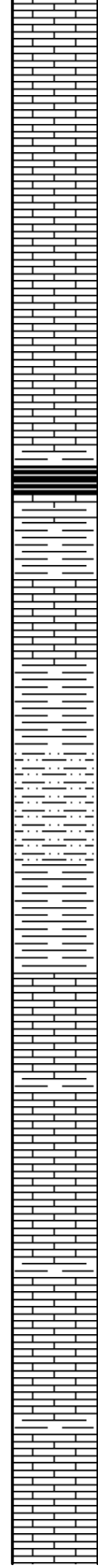
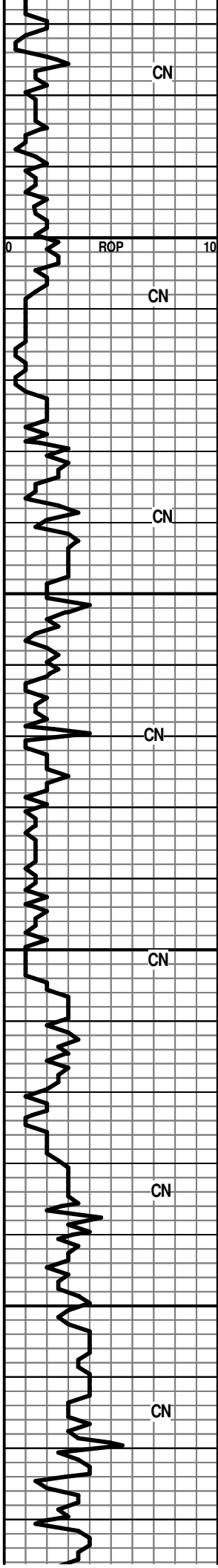
LS-TN-F-GRN-FOSS-TR PP POR-BRITE YEL FLOR- NO  
VIS CUT

LS-TN-F-XLN-HD-DNS W/CHRT-GRY-OPQ-FRSH W/  
CHLK IN TRAY

LS-OFF WHT-F-XLN-TR FOSS-HD-DNS W/ CHLK IN  
TRAY

LS-TN-F-XLN-BLOCKY-W/CM-DVD-XLS





3800

LS-TN-V-F-GRN-FOSSFRAGS-TR FRAC POR-NO VIS  
FLOR-NO VIS SHOW

LS-OFF WHT/GRY-F-GRN-FOSS-HD-DNS

LS-OFF WHT-F-XLN/GRN-CHLKY-FOSS FRAGS-NO VIS  
POR-NO VIS FLOR

LS A.A.

WT. 9.4  
VIS 51  
LCM#2

LS-TN-F-XLN/GRN-FOSS-BLOCKY-HD-DNS

HEEBNER 3830' (-1590')

SH-BLK-CARB

TORONTO 3850' (-1610')

3850

LS-GRY-F-XLN-FOSS-HD-DNS

DOUGLAS SH 3859' (-1619')

SH-GRY/GRN-SPLNTY

SH-GRN-WAXY

SH-GRY-SFT-SLTY

SLTSS-FRSTY GRY-M-GRN-SHLY-GLAU-TR INTER-GRN  
POR-NO VIS FLOR-NO VIS SHOW

3900

BROWN LS 3904' (-1664')

LS-GRY-F-XLN-HD-DNS W/ PYR XLS IMBD IP

LANSING/KC 3920' (-1680')

LS-GRY-F-XLN-SLI CHLKY-FOSS SHELLS-SHLY-NO  
VIS POR-NO VIS FLOR-NO VIS SHOW

LS-TN-V-F-GRN-FOSS FRAGS-SM OOL-HD-DNS

WT. 9.4  
VIS 46  
LCM #2

LS-TN-F-XLN-FOSS-HD-DNS W/  
CHRT-TN-OPQ-FOSS-FRSH

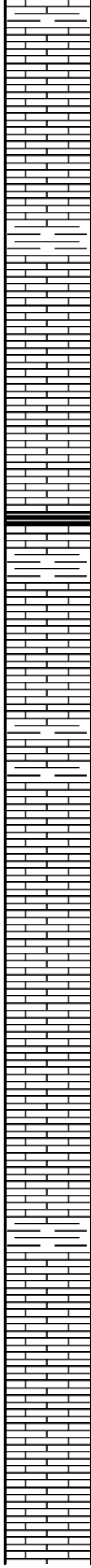
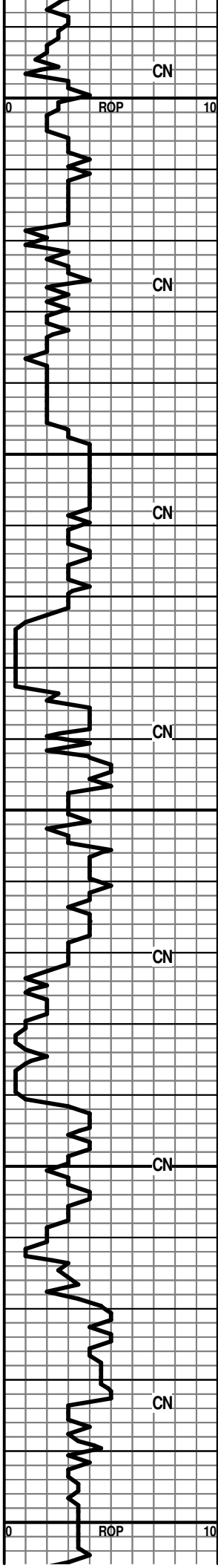
3950

LS A.A.

LS-TN/OFF WHT-F-XLN/GRN-FOSS FRAGS-TR  
ISOLATED VUG TO NO VIS POR -DNS W/ ABUNDT  
CHRT-VARIG-OPQ-FRSH IN TRAY

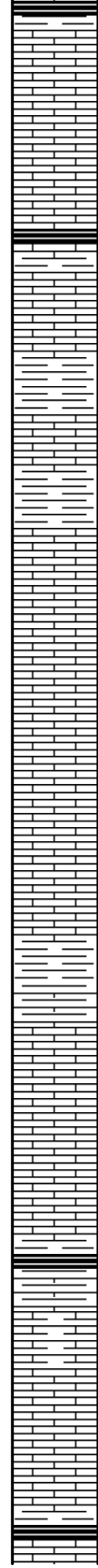
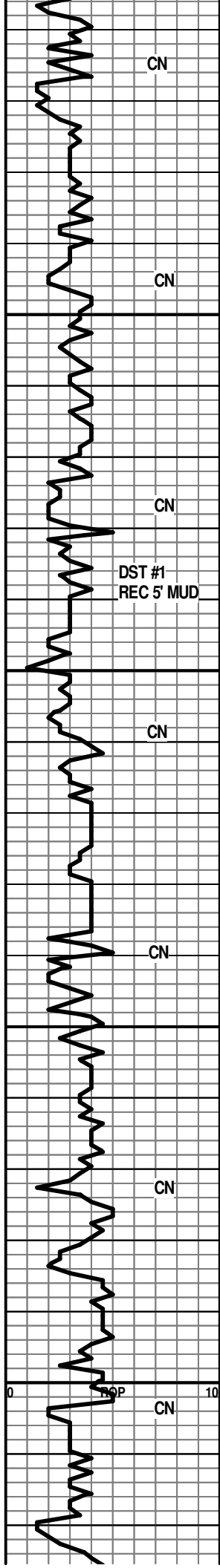
WT. 9.1  
VIS 53  
LCM #2

LS-GRY/BRN-F-GRN-HD-SHLY-FOSS-NO VIS POR-NO  
VIS FLOR



4000  
LS A.A.  
LS-TN-F-XLN/GRN-FOSS FRAGS-HD-DNS  
SH-GRY-BLKY  
LS-GRY-F-XLN-SHLY-FOSS FRAGS-HD-DNS  
LS-TN-F-XLN-V-SM-FOSS FRAGS-BRIT-DNS  
4050  
LS-TN-F-XLN-FOSS FRAGS-SM OOL-HD-DNS  
SH-BLK-CARB W/ LS-TN-V-F-GRN-OOL-TR SM OOL-MOLDIC POR -NO VIS FLOR-NO VIS SHOW  
LS-TN-F-XLN-OOL-FOSS FUS-GD-OOL-MOLDIC POR-NO VIS FLOR-NO VIS SHOW  
LS-GRY-F-XLN-V-OOL-TR OOL-MOLDIC POR-NO VIS FLOR-NO VIS SHOW  
4100  
LS A.A.  
LS-TN/GRY-F-XLN-OOL-SHLY-HD-DNS  
LS-TN-V-F-XLN (TRANSLUCENT)-OOL-TR OOL-MOLDIC POR-BRIT-NO VIS FLOR-NO VIS SHOW  
LS-TN-F-XLN-OOL-FR TO GD OOL-MOLDIC POR-BRIT-NO VIS FLOR-NO VIS SHOW W/ CHRT-GRY-OPQ-FRSH IN TRAY  
LS-TN/GRY-F-XLN-HD-DNS  
4150  
LS-OFF WHT-F-XLN-OOL-TR GLAU-HD-DNS  
SH-GRY-SPLNTY  
LS-GRY-F-XLN-BLOCKY-HD-DNS W/ CHRT-OFFWHT-OPQ-FRSH  
LS-OFF WHT-F-XLN-HD-DNS  
4200  
LS A.A. CHLKY

WT. 9.1 VIS 51 LCM #2
WT. 9.1 VIS 48 LCM #2
WT. 9.3 VIS 47 LCM 1 1/2#
WT. 9.1 VIS 47 LCM #2



SH-BLK-CARB  
 LS-TN/CRM-F-XLN-CHLKY-BLOCKY-TR PP AND SM VUG  
 POR-NO VIS FLOR-NO VIS CUT-TR GAS BUB

LS-TN-M-XLN-SLI CHLKY-TR FOSS-PR SHALLOW VUG  
 POR-DULL WHT MIN FLOR-NO VIS CUT

LS-TN-F-XLN-HD-DNS-DULL WHT FLOR-NO VIS SHOW

SH-GRN-GRY-SPLNTY

4250  
 LS-TN-F-GRN-BRIT-FOSS-PP POR AND SM VUG-DULL  
 WHT FLOR-NO VIS CUT

LS-GRY-V-F-XLN-TR FOSS SHELLS-HD-DNS

B/KC 4272' (-2032')

SH-DK GRY-SPLNTY

MARAMATON 4280' (-2040')

LS-TN W/ BLK STN-F-GRN-FOSS-DK BRN EDGE  
 STN-PP AND SM VUG POR-DULL WHT FLOR-GD STRM  
 CUT-NO ODOR-CHLK IN TRAY

4300  
 LS-OFF WHT-F-GRN-V-SM OOL-PR TO FR INTER-PRT  
 POR-TR FRAC-LT BRN STN-NO VIS FLOR-IMMED FLSH  
 AND STRM CUT-NO ODOR-NO VIS FREE OIL

LS-GRY-F-XLN-FOSS BRYZ-GD INTRA-PRT POR-BRN  
 OIL-DULL WHT FLOR-GD FLSH AND STRM CUT-NO  
 ODOR-GOOD SHOW OF FREE OIL IN FOSS AND TRAY

LS-GRY-F-XLN-HD-DNS W/ CHRT-YEL-TRANS-FRSH

SHALES-GRY/GRN-BLKY/W LS-GRY-F-XLN-HD-DNS  
 AND CHRT-OFF WHT-OPQ-FRSH

4350  
**PAWNEE 4350' (-2110')**  
**LOG 4352' (-2112')**

LS-OFFWHT/GRY-F-XLN-HD-DNS W/ CHRT (1PC PR PP  
 POR-LT BRN STN-NO VIS FLOR-FLSH CUT)

LS-OFF WHT-F-XLN-SLI CHLKY-HD-DNS

LS A.A. ABUNDT CHLK IN TRAY

LS-OFF WHT-F-XLN-FOSS FRAGS-HD-DNS W/ PYR XLS

SH-BLK-CARB

LS-OFF WHT-F-XLN-HD-DNS W/ CHRT(1 PC PR PP POR  
 W/ DK BLK STN-NO VIS FLOR-NO VIS CUT) TR CHLK IN  
 TRAY

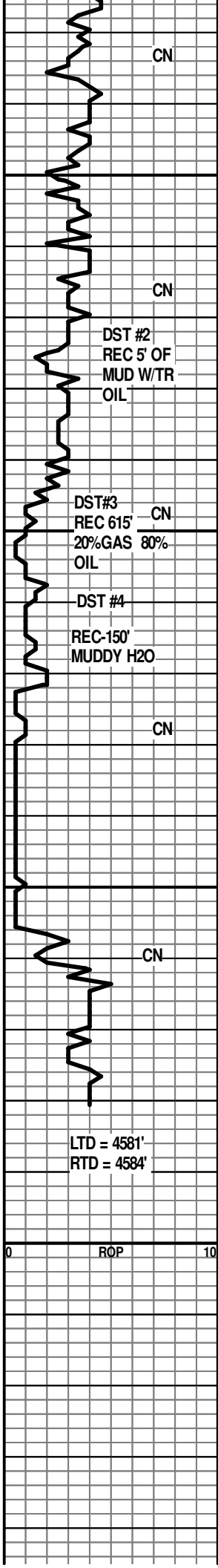
4400  
 SH-GRY-GRN-SPLNTY

LS-OFF WHT-F-XLN-FOSS FUS-HD-DNS

SH-BLK-CARB

FT. SCOTT 4423' (2183')

	WT. 9.4 VIS 51 LCM #2
9 unit gas incrs @ 4257'	
	STRAP 4343.8 4340.67 3.14 LONG TO THE BOARD
	SHORT-TRIP @ 4280'
CIRC 20-40-60	WT. 9.4 VIS 48 LCM #1
CIRC 20-40-60	WT. 9.4 VIS 47 LCM #1
20 UNIT GAS INCRS @ 4337'	
CFS	DST #1 4268-4337' REC-5' MUD IBLW-WK BLW BUILT TO 1/2 IN FBLWNO BLW 15/30/15/30 IFP-66.52-70.63 FFP-73.67-76.53 SIP-667.53-226.49 HP-2089-2060
	WT. 9.1 VIS 60 LCM #3
	WT. 9.1 VIS 49 LCM #2
HW-15 UNIT GAS INCRS @ 4392'	
	WT. 9.3 VIS 56 LCM #2



4450  
4500  
4550  
4600

LS-GRY/BLU-V-F-XLN-LITHO-V-SM FOSS FRAGS-SM OOL-HD-DNS  
 LS-TN-F-XLN-TR FOSS FRAG-HD-DNS  
**LOWER CHEROKEE 4446' (-2206')**  
 SH-BLK-CARB  
 LS-GRY/TN-F-XLN-HD-DNS W/ TR SM PYR XLS  
 LS-TN-V-F-XLN-CHRTY-HD-DNS  
 SHALES-VARIG-SPLNTY-CHRT-OFF WHT-OPQ-FRSH W/ LT BRN STN-NO VIS FLOR-NO VIS CUT-TR SH-LT GRN-BLKY-SNDY  
**MISS 4496' (-2256') LOG 4494' (-2254')**  
 CHRT-OFF WHT-OPQ-FRSH TO TRIP-GD-PP PLUS VUG POR-LT BRN STN-FNT YEL/GLD FLOR-GD STRM CUT-GD ODOR-TR GAS BUB  
 CHRT-OFF WHT-OPQ-FRSH W/ SEVERAL PCS TRIP-GD EDGE STN-FNT YEL /GLD POR-GD STRM CUT-FNT ODOR-NO VIS GAS BUB  
 CHRT-OFF WHT-OPQ-FRSH-TR TRIP-W/ PP AND VUG POR-TR FNT YEL FLOR-TR FR STRM CUT-FNT ODOR  
 CHRT-OFF WHT-OPQ-FRSH-RARE PC TRIP A.A.  
 CHRT-A.A. NO VIS SHOW  
**GILMORE CITY 4556' (-2316')**  
 LS-TN-F-XLN-FOSS-HD-DNS  
 LS-TN/GRY-F-XLN-FOSS-HD-DNS

HW 15 UNIT GAS INCRS @ 4430'  
 DST #2 4468-4498' REC-5' MUD SHOW OF OIL  
 IBLW-WK BLW BUILT TO 1/2 IN  
 FBLW-NO BLW-FLSH TOOL -NO CHANGE 15/60/15/60  
 IFP-44.43-50.18  
 FFP-53.65-60.61  
 SIP-1418-1393  
 HP-2195-2177  
 HW 15 UNIT GAS INCRS @ 4496' 30 MIN CIRC  
 HW 20 UNIT GAS INCRS @ 4506-20 MIN CIRC  
 -CFS  
 CFS  
 HW 15 UNIT GAS INCRS @ 4516' 20 MIN CIRC  
 -CFS  
 DST #3 4498-4506' REC-615' CLEAN GASSY OIL-20% GAS-80% OIL-60'-WATER AND MUD CUT OIL-65% OIL-25% MUD-10% H2O  
 IBLW-GD BLW BOB IN 17 MIN-BLW BK TO 4 IN  
 FBLW-GD BLW BOB IN 17 MIN GAS TO SURF IN 37 MIN-GAS NOT ENOUGH TO GAUGE-30/60/60/90  
 IFP-60.22-161.85  
 FFP-191.91-288.22  
 SIP-1348.06-1282.15  
 HP-2176.29-2157.85  
 DST #4 4507-4517' REC-150' MUDDY H2O WITH SHOW OF OIL IN TOOL-20% MUD-80% H2O-IBLW-FR BLW BUILT TO 4 1/2 IN-FBLW-WK BLW-BUILT TO 1 1/2 IN-30-45-60-90  
 IFP-41.96-73.43  
 FFP-77.85-107.97  
 SIP-1248.22-1186.48  
 HP-2116.4-2091.96

LTD = 4581'  
 RTD = 4584'

ROP 10

