



Scale 1:240 (5"=100') Imperial
Measured Depth Log

Well Name: LENKNER NO. 1-29
Location: SEC 29-T30S-R 13 W
License Number: 15-007-23,822-00-00
Spud Date: 12-26-2011
Surface Coordinates: 990' FWL,2400' FNL
90' S. OF SE SW NW
Bottom Hole Coordinates: VERTICAL
Region: BARBER CO
Drilling Completed: 1-9-2012
Ground Elevation (ft): 1921' K.B. Elevation (ft): 1929'
Logged Interval (ft): 2100' To: 4950' Total Depth (ft): 4950'
Formation: KINDERHOOK CHRT,VIOLA LS AND CHRT
Type of Drilling Fluid: NATIVE MUD TO 2720'/CHEMICAL TO TD
Printed by WellSight Log Viewer from WellSight Systems 1-800-447-1534 www.WellSight.com

OPERATOR:

Company: F.G. Holl Company LLC
Address: 9431 E. Central, Suite 100
Wichita, Kansas 67206

DRILLING CONTRACTOR:

DUKE RIG #8

Double derrick; drill pipe 4.5' X H (16.6#); collars 6.25 x2.25 x 357.68'; Bit; 7 7/8, Reed HP52, 3-14's; Reference datum 8 ft above ground level. Poor Boy's (Martin- Decker) mechanical geologist.

CIRCULATION SYSTEM:

Pump Make: EWCO,Pump model: 14W400, liner size 6 ,stroke 14. Starch mud @ 1800' to 3300', Chemical mud @ 3300' to TD
Mud/Co/Service Mud, Inc.-RICK HUGHES-Great Bend, Ks-620-792-5425

GAS DETECTION SYSTEM:

MBC Well Logging and Leasing -Analog Gas Detection.

OPEN HOLE LOGS:

CNL/CDL,DIL/MEL,BHCS,GAMMA RAY
NO FILTERS, HI RES TO B/KC
FRAC FINDER AND DOLOMITE MATRIX OVER ARBUCKLE TO TD

SURFACE CASING

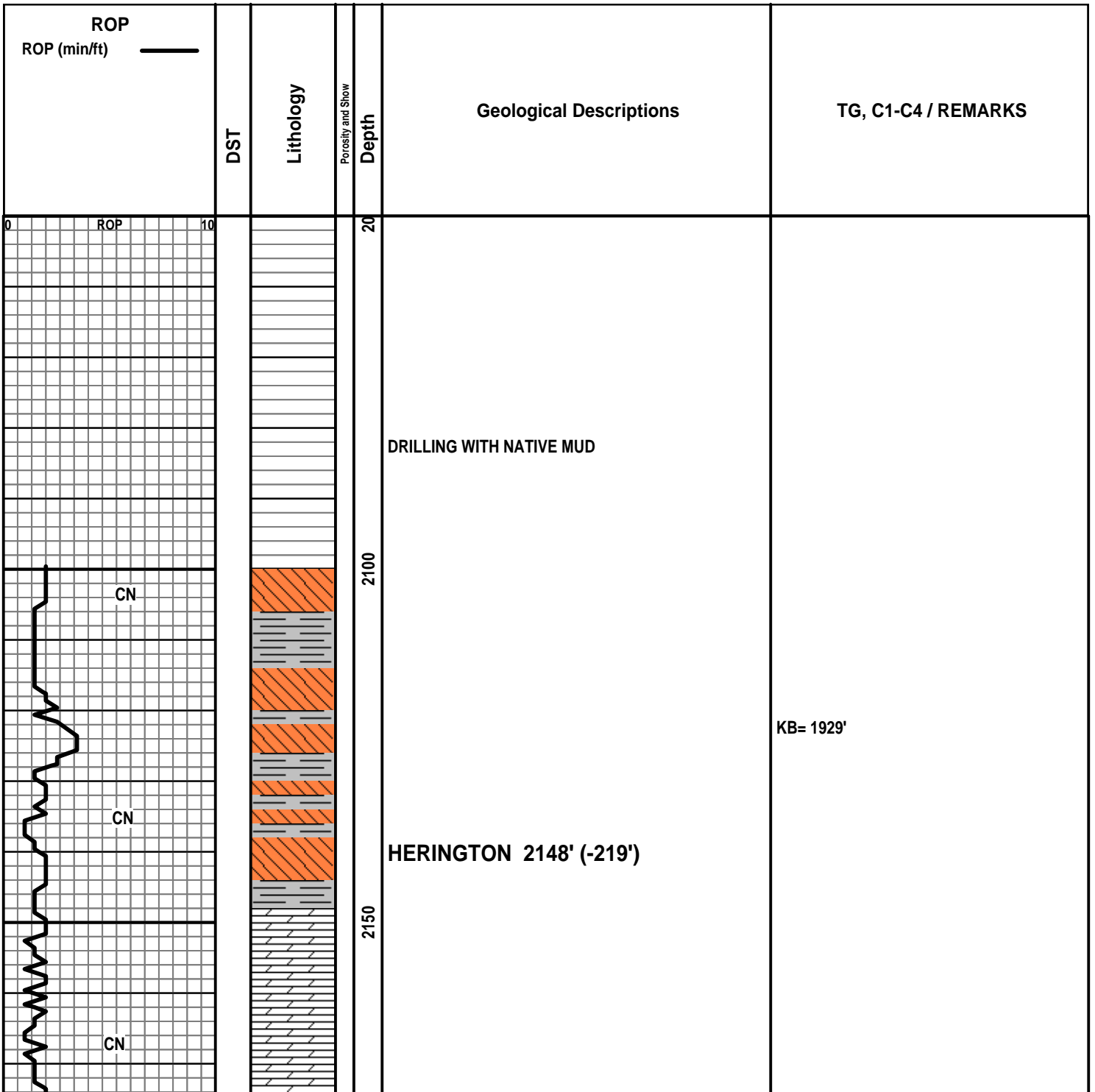
SURFACE CASING 8 5/8 IN SET AT 1025'
CMT 400 SAXS
PRODUCTION CASING 5 1/2 IN SET AT 3945'
CMT 180 SAXS

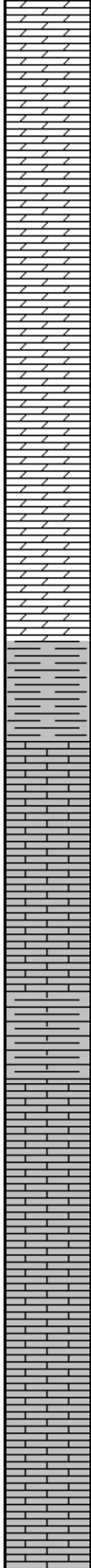
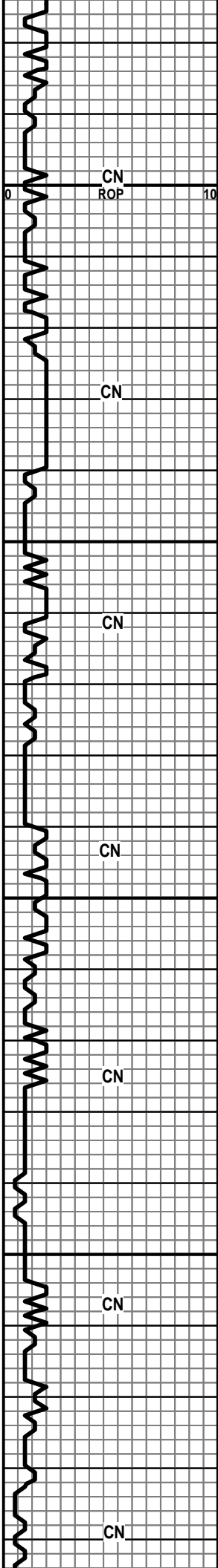
COMPLETION

PRODUCTION CASING SET IN THE ARBUCKLE

WELLSITE GEOLOGIST:

RENE HUSTEAD
600 N. WINWOOD ST.
GARDNER, KANSAS 66030
PHONE (913) 208-3390



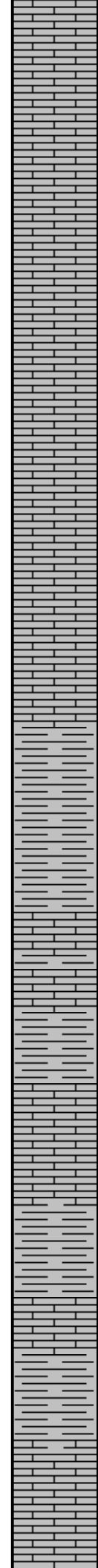
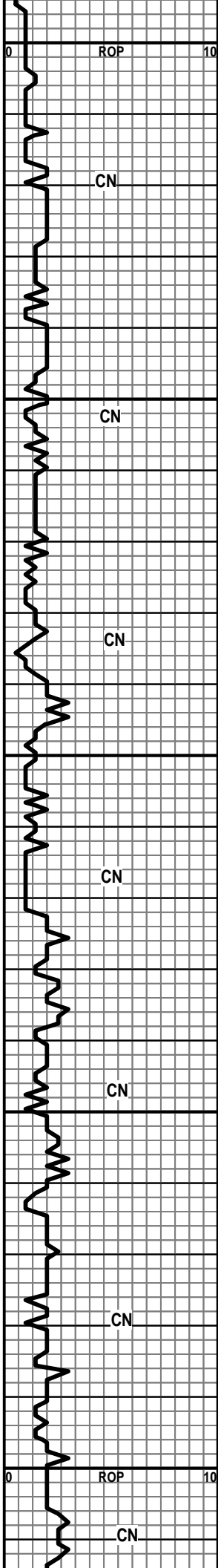


2200
2250
2300
2350

WINFEILD 2216' (-287')

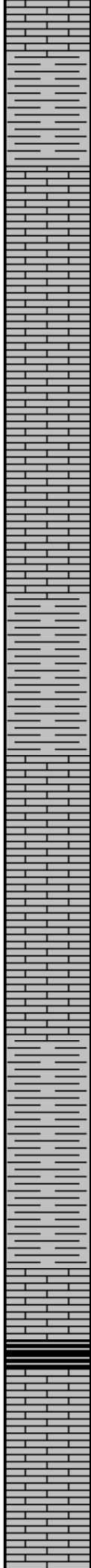
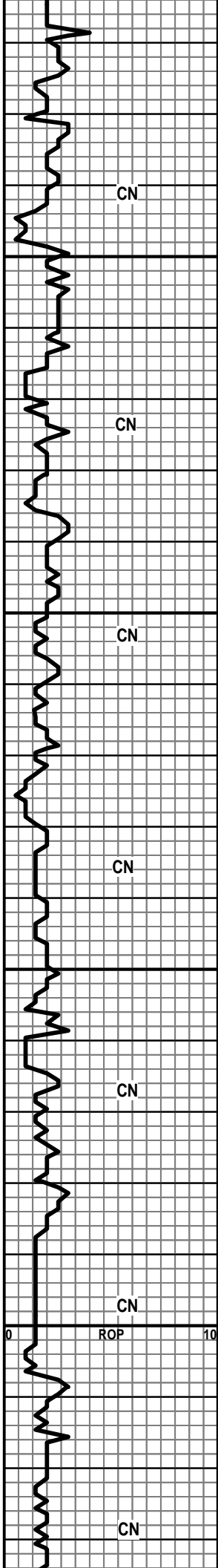
TOWANDA 2278' (-349')

FT. RILEY 2328' (-399')



2400
2450
2500
2550
2600

COUNCIL GROVE 2496' (-567')



2650

2700

2750

2800

SH-GRY-BLKY-LMY

RED EAGLE 2792' (-863')

LS-CRM-F-XLN/GRN-BRIT-FOSS-SHELLS-CHLKY
IP-V-F-PYR XLS-NO VIS SHOW

SH-BLK-CARB

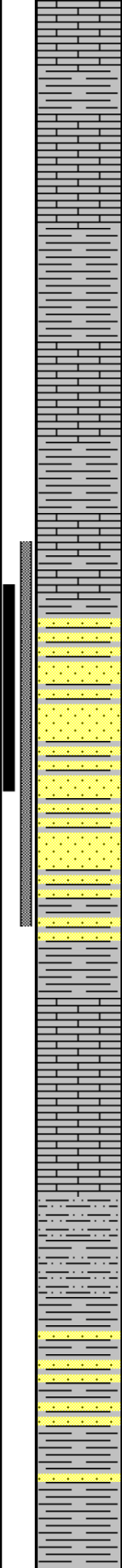
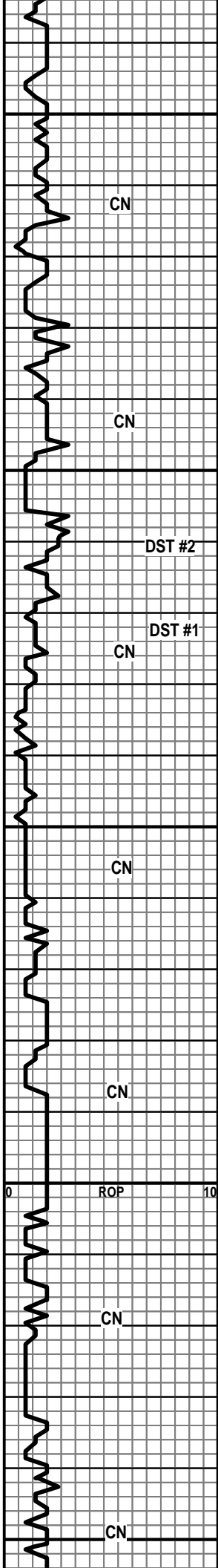
LS-CRM-V-F-GRN-HD-TR FOSS FRAGS-NO VIS
POR-NO VIS SHOW

LS-CRM-F-XLN-HD-DNS TR FOSS

DIS-PLACED NATIVE MUD TO CHEMICAL @
2720'

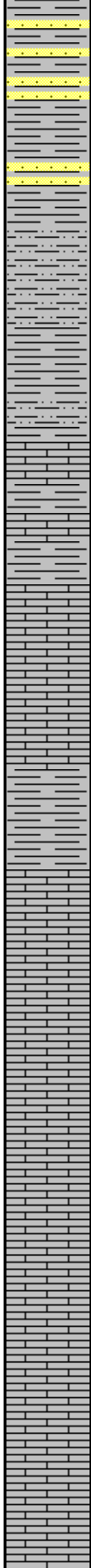
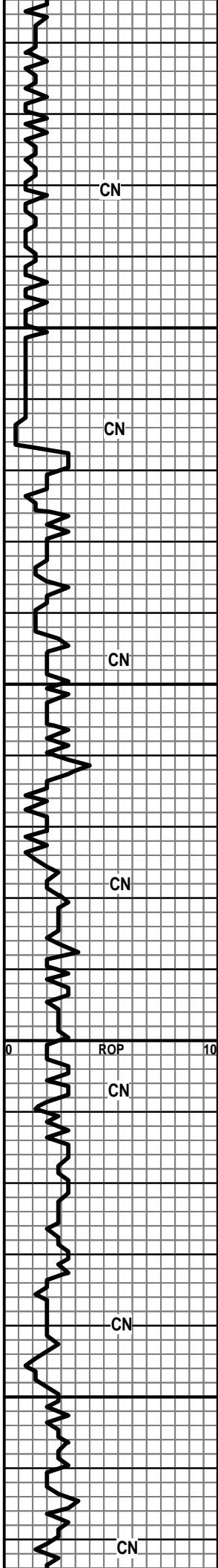
MUD DATA @ 2790'
WT. 8.7
VIS 46

MUD DATA @ 2840'
WT. 8.8
VIS 41



2850
 LS-GRY-F-XLN-CHRTY-HD-DNS
 SH-LT GRY-SFT-GUMMY
 LS-OFF WHT W/ BLK SPECS-F-XLN-BRIT-OOL-FOSS FRAGS-NO VIS POR
 SH-GRY-GRN-SPLNTY-FOSS-FUS
 LS-LT BRN-V-F-XLN-HD-FOSS-OOL-DNS-NO VIS SHOW
 SH-DK GRY-SPLNTY
 2900
ONAGA 2918' (-989')
 SS-FRSTY GRY-V-F-GRN-FRI TO TT- RNDED-WELL SRTED-SLI TR CALC CMT-SH LT GRY IMBD IP-TR V-F-MICA
 SLTSS-FRSTY GRY-F-GRN-MICA-HEM-SHLY
 2950
 SS-FRSTY GRY-F-QRTZ GRN-FRI TO TT-RNDED-FR SRTED-TR CALC CMT-MICA-HEM-TR FOSS
WABAUNSEE 2974' (-1045')
 POOR SAMPLE
 3000
 SLTSS-FRSTY GRY-F-GRN-SHLY-MICA-HEM
 SS-TRANS-F-QRTZ GRN-TT-RNDED-WELL SRTED-TR CALC CMT-TR GLAU IMBD-TR INTER-GRN POR
 SH-GRY-SFT-GUMMY
 SH-DK GRY-SPLNTY
 3050

FIL 8.8
 MUD DATA @ 2849'
 WT. 8.8
 VIS 41
 STRAP
 2923.55 STRAP
 2925.97 BOARD
 STRAP SHORT TO BOARD 2.42
 DST #1
 2916'-2945'
 REC 30 FT DRILLING MUD
 IBLW-WK BLDING BLW TO 2 INCHES IN 15 MIN
 FBLW-WKBLW BLT TO 1 INCH IN 15 MIN
 15/30/15/30
 SIP-1373.61 TO 884.16
 IFF-46.02-64.02
 FFP-51.72-60.91
 HP-1401.13 TO 1376.62
 CIRC @ 2944'
 CIRC @ 2964'
 MUD DATA @ 2964'
 WT. 9.0
 VIS 47
 FIL 9.0
 DST #2
 2910'-2964'
 REC-35 FT DRILLING MUD
 IBLW-WK BLDING BLW 2 INCHES IN 15 MIN
 FBLW-WK BLW 1.5 INCHES IN 15 MIN
 15/30/15/30
 SIP-1001.86 TO 956.38
 IFF-55.87-65.40
 FFP-64.88-80.16
 HP-1316.77-1309.16
 MUD DATA @ 3025'
 WT. 9.0
 VIS 47



SS-FRSTY WHT-F-GRN-QRTZ-TT-RNED-WELL
 SRTED-CALC CMT-TR GLAU

SH-LT GRY-SFT-GUMMY

SS A.A.

SLTSS-FRSTY GRY-F-GRN-V-SHLY-MICA-HEM

3100 SH-V-SFT-GUMMY

STOTLER 3116' (-1187')

LS-LT BRN-F-XLN-HD-DNS

SH-GRY-GRN-SPLNTY

LS-CRM-F-GRN-FOSS-SLI CHLKY-NO VIS POR/DNS

LS A.A.

3150 LS-LT BRN-F-XLN-BLOCKY-HD-DNS

SLTSS-FRSTY GRY-F-GRN-SHLY-MICA-HEM-
 SH-GRY-SFT-SLTY

TARKIO 3176' (-1247')

LS-TN-V-F-XLN-HD-DNS

LS-GRY-TN-F-XLN-DNS

3200 LS-TN-F-XLN-FOSS-SHELLS-HD-DNS TR CHLK IN
 TRAY

LS-TN-F-XLN-FOSS-HD-DNS

BERN 3234' (-1305')

SAMPLE: smalls-LS-CRM-F-XLN-BRIT-TR CHLK-TR
 FOSS-NO VIS FLOR-NO VIS POR

LS-CRM-F-XLN-CHLKY-BRIT-TR FOSS-PR TO FR PP
 POR-NO VIS FLOR

3250 LS-CRM W /BLK SPECS-HD-FOSS-TR SM OOL-DNS

LS-TN-V-F-XLN-OOL-HD-DNS

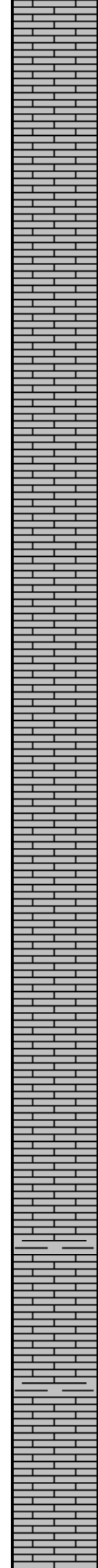
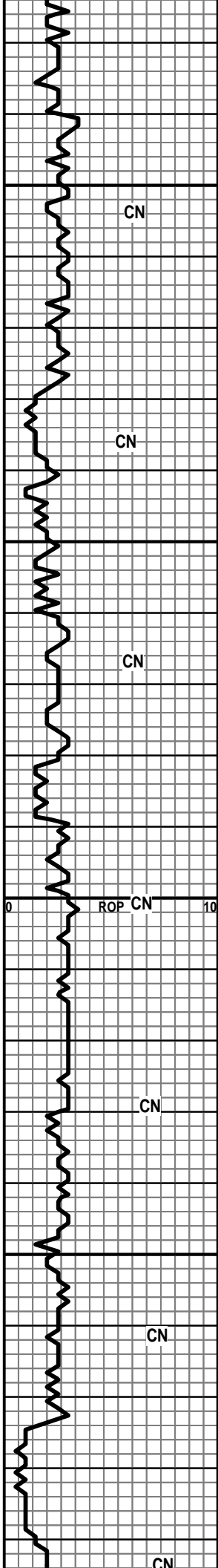
MUD DATA @ 3154
 WT. 9.0
 VIS 45

MUD DATA @ 3177'
 WT. 9.0
 VIS 44

MUD DATA @ 3238
 WT. 9.0
 VIS 44

HW 20 UNIT GAS INCRS
 CHROMO- 20 UNIT GAS INCRS

CFS FOR SAMPLES AT 3260'
 NOTE: TOO WINDY TO TEST



3300 LS-CRM-F-XLN-HD-FOSS FRAGS-TR PYR XLS

LS-CRM-F-XLN-HD-FOSS-TR GLAU IMBD

LS-TN-F-XLN-BLOCKY-HD-DNS

LS-OFF WHT-F-XLN-CHLKY-SM OOL-TR PR SM
VUG/PP POR-NO VIS FLOR-NO VIS SHOW

LS-A.A. TR CHLKY

3350 LS-TN-F-XLN-HD-DNS-FOSS SHELLS

LS-TN/GRY-F-XLN-HD-DNS SHLY IP

LS A.A.

LS-TN-F-XLN-HD TO BRIT-V-FOSS-TR PP POR TO NO
VIS POR-NO VIS SHOW

3400 LS-OF WHT-F-XLN-CHLKY-FOSS-DNS

LS-GRY-F-XLN-HD-FOSS-SHELLS-TR OOL-SH LT GRY
IMBD-DNS

SH-LT GRY-SFT-GUMMY-SLTY

TOPEKA 4339' (1510')

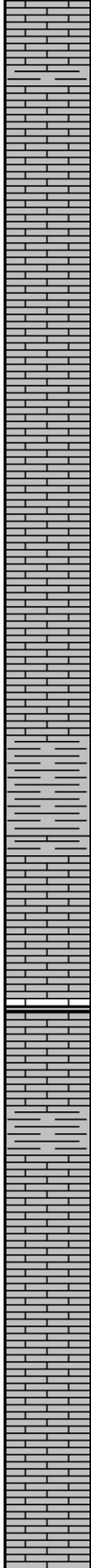
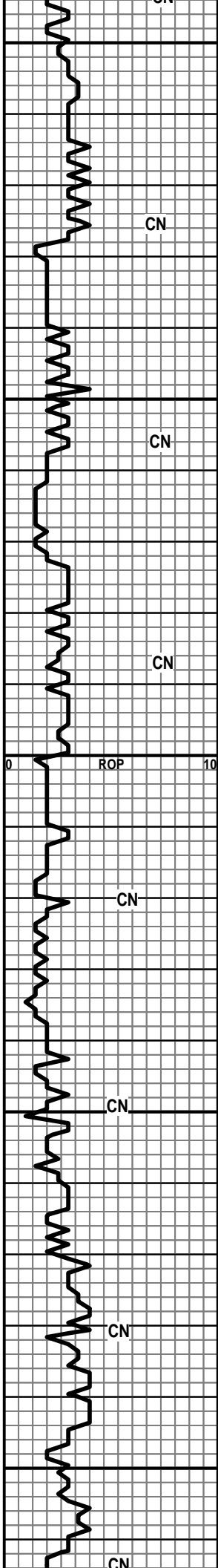
LS-GRY-F-XLN-HD TO BRIT-FOSS-NO VIS POR

3450 SH-GRY-BLKY-LMY

LS-CRM/TN-F-GRN-HD TO BRIT-FOSS
FRAGS-OOL-DNS

LS-CRM-F-XLN-V-BRIT-CHLKY IP-OOL-FOSS
FRAGS-PR TO FR OOL-MOLDIC POR/PP/SM VUG-NO
VIS FLOR-NO VIS CUT

LS-CRM-F-XLN-BRIT-OOL-FOSS-TR OOL-MOLDIC
POR-NO VIS FLOR-NO VIS SHOW



3500
3550
3600
3650
3700

LS-TN-F-GRN-FOSS-OOL-HD-DNS

LS-TN-V-F-XLN-V-OOL-HD-DNS W/ TR VUG POR

SH-GRY-SPLNTY-LMY

LS-GRY-F-GRN-BRIT-FOSS-FUSS-NO VIS POR-NO VIS FLOR

LS-TN-F-GRN-OOL-HD-DNS

LS-TN-F-XLN-OOL-FOSS-HD TO BRIT-POORLY DEV OOL-MOLDIC POR-NO VIS FLOR-NO VIS SHOW

SH-GRY-SPLNTY-PYR XLS IMBD

LS-TN-F-XLN-HD-V-FOSS-BLOCKY-TR FOSS VUG POR-NO VIS FLOR-NO VIS SHOW

SH-GRY-BLKY-LMY-W LG FOSS-FUSS

DEER CREEK 3614' (-1685')

LS-TN-F-XLN-BRIT TO HD-FOSS-FRAGS-CHLKY IP-DULL WHT MIN FLOR-NO VIS SHOW

SH-BLK-CARB

LS-OFF WHT-F-XLN-V-CHLKY-BRIT-NO VIS POR

SH-GRY-BLKY-FOSS

LS-OFF WHT-F-GRN-CHLKY-FOSS-DULL WHT MIN FLOR-NO VIS POR

LS-TN/TRANS-V-F-XLN-HD-SM FOSS FRAGS-CHRTY-DNS

LS-GRY-F-XLN-HD-DNS

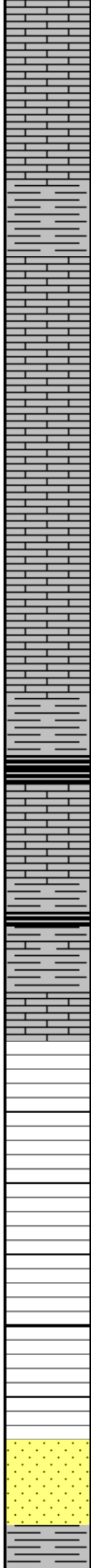
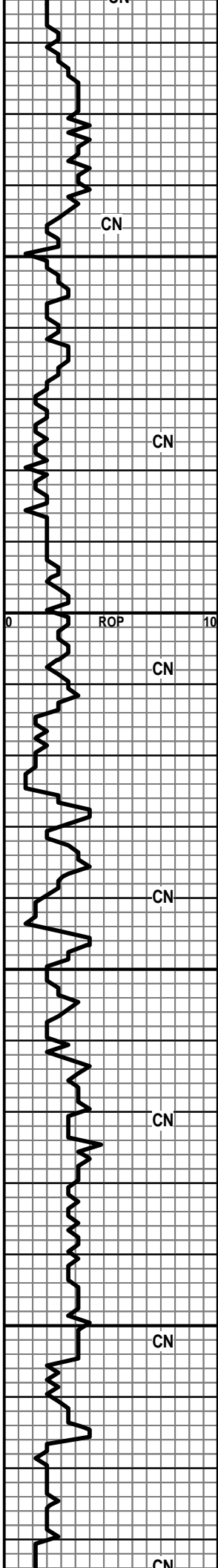
LS-OFF WHT-F-XLN-CHLKY-TR FOSS-TR RARE VUG POR TO NO VIS POR-DULL WHT MIN FLOR-NO VIS CUT

LS-CRM-F-GRN-CHKLY-TR FOSS-PR PP/VUG POR-TR FRAC-DULL MIN FLOR-NO VIS CUT

MUD DATA @ 3505'
WT 9.4
VIS 42
FIL 11.2

MUD DATA @3665'
WT. 9.3
VIS 50

MUD DATA @ 3205'
WT. 9.3
VIS 49



LS-OFF WHT/BRN MOTT-F-XLN-FOSS-HD-DNS-BRITE
 YEL /GLD FLOR-NO VIS CUT

 SH-GRN-GRY-SPLNTY
 3750
 LS-OFF WHT/GRY-F-XLN-TR FOSS-NO VIS POR-DULL
 WHT MINFLOR

 LS-OFF WHT-F-XLN-BRIT-CHLKY-TR FOSS-NO VIS
 POR-DULL WHT MIN FLOR

 LS-GRY-F-XLN-HD-FOSS-OOL-SHLY-DULL MIN
 FLOR-NO VIS POR

 3800
 LS-TN-F-XLN/GRN-HD-TR FOSS-TR OOL-DULL WHT
 MIN FLOR-DNS

 SH-BLK-CARB

 LS-GRY-F-XLN-TR FOSS-HD-DNS

HEEBNER 3837' (-1908')

 SH-BLK-CARB

 3850
 SH-GRY-SFT-GUMMY W/ CHLK-V-SFT
TORONTO 3853' (-1924')

 LS-GRY-V-F-XLN-CHRTY-HD-TR FOSS-DNS

 LS-TN/GRY-F-XLN-BRIT-FOSS-DNS

 SH-LT GRY-GUMMY

 LS-OFF WHT-F-XLN-HD-DNS TR FOSS-CHLK IN TRAY

 3900
 LS-TN-F-XLN-HD-FOSS FRAGS-DNS W CHRT-LT
 BRN-OPQ-FRSH

 LS-OFF WHT/LTBRN-TR FOSS-HD-DNS SCATT
 YEL/GLD FLOR IP TO DULL WHT MIN FLOR-NO VIS
 CUT

DOUGLAS SS 3916' (-1990')
 SS-FRSTY GRY-F-QRTZ GRN-TT TO FRI-RNDED-WELL
 SRTE-TR SH-MICA HEM-NO VIS FLOR-NO VIS CUT

 SH-GRY-SPLNTYW/ LS-DK BR-V-F-XLN-HD-DNS

MUD DATA @ 3800'
 WT. 9.4
 VIS 48

HW 37 UNIT GAS INCRS

HW 48 UNIT GAS INCRS

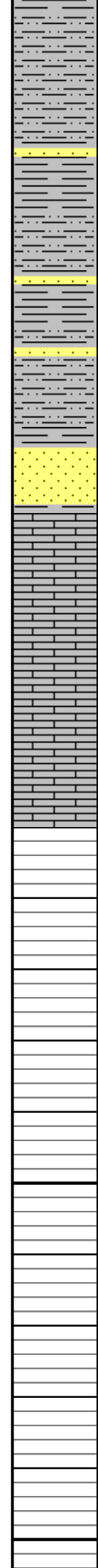
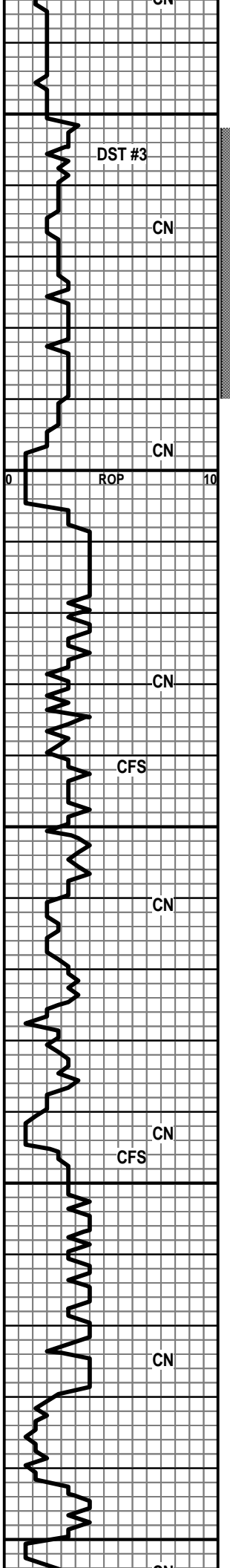
HW 20 UNIT GAS INCRS

MUD DATA @ 3859'
 WT. 9.3
 VIS 50

MUD DATA @ 3889'
 WT. 9.3
 VIS47

MUD DATA @3920'
 WT. 9.4
 VIS 45

DST #3
 REC-600' -10%-MUD-90% H2O
 IBLW-STRNG BLW BOB IN 3 MIN
 FBLW-STRNG BLDING BLW BOB IN 4 MIN
 5/60/15/60



SH-LT GRY-V-SFT-SILTY W/ 2 PC SLTSS-FRSTY
 GRY-F-GRN-MICA-HEM

3950
 SHALES-GRY-DK GRY-SPLNTY-TO SFT AND GUMMY

SHALES AS ABOVE

SHALES-LT GRY-SFT-SILTY

SHALES A.A.

SLTSS-FRSTYGRY-V-F-GRN-V-SHLY-MICA-TR HEM

4000
 SS-FRSTY WHT-F-GRN-QRTZ-FRI TO TT-RNDED-WELL
 SRATED-FR INTER-GRN POR-NO VIS FLOR-TR
 GLAU-TR HEM

LS-LT BRN-V-F-XLN-HD-DNS

LS-TN-F-XLN-HD-TR FOSS-DNS W/ RARE FRAC POR

LS OFF WHT/TN-F-XLN-BRIT TO HD-FOSS-SHLY-TR
 FRAC POR-DULL WHT MIN FLOR-NO VIS CUT-GAS
 BUB

4050
 LS-DK BRN-V-F-XLN-HD-DNS W/ V-SM PYR XLS IMBD

LS-CRM-F-XLN-HD-SM PYR XLS-DNS

LS-OFF WHT-F-XLN-HD-DNS-TR FOSS CHLKY IP

LS-OFF WHT/GRY-F-XLN-OOL-HD-DNS

LS-OFF WHT-F-XLN-FOSS-CHLKY-NO VIS POR-TR DK
 BLK STN-NO VIS FLOR-NO VIS CUT

4100
 LS-OFF WHTV--F-XLN-BLOCKY-HD-DNS TR FOSS
 -CHRTY

LS-OFF WHT-F-XLN-BRIT-V-CHLKY

LS-OFF WHT/GRY-F-XLN-HD-TR FOSS-DNS

LS A.A.

LS-DK BRN-F-XLN-FOSS SHELLS-OOL-HD-DNS

4150
 LS-OFF WHT-F-XLN-BRIT-FOSS FRAGS-PR PP/SM
 VUG POR-MOSTLY CHLKY-DULL WHT MIN FLOR-NO
 VIS CUT

LS-GRY-F-XLN-HD-DNS TR FOSS

LS A.A. MOSTLY CHLKY W/ TR SM VUG POR

3/00/13/00
 SIP-1482.78-1459.93
 IFP-98.79-179.78
 FFP-206.56-355.44
 HP-2026.77-1947.61

MUD DATA @ 3970'
 WT. 9.4
 VIS 50

MUD DATA @ 3987'
 WT. 9.4
 VIS 47
 FIL 9.6

HW 8 UNIT GAS INCRS
 CHROM 7 UNIT GAS INCRS

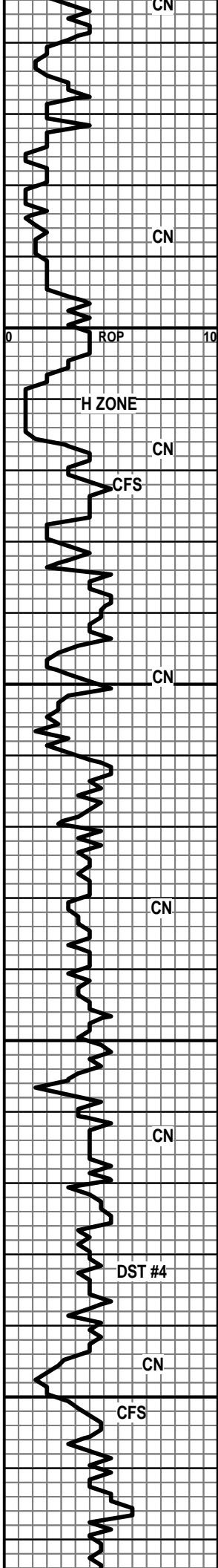
HW 20 UNIT GAS INCRS

SAMPLES IN POOR CONDITION RAISED
 VIS,CUT BACK PUMP PRESSURE

SAMPLES IN POOR CONDITION

MUD DATA @ 4082'
 WT. 9.2
 VIS 47

MUD DATA @ 4125'
 WT. 9.4
 VIS 47
 FIL 10.8



LS-TN-F-XLN-BRIT-TR FOSS TR SM VUG POR-MOSTL
CHLKY-DULL WHT MIN FLOR-NO VIS CUT

LS-OFF WHT-F-XLN-BRIT TO HD-CHLKY IP-TR PP/SM
VUG POR-DULL WHT MIN FLOR-NO VIS CUT

LS-TN-M-GRN-BRIT-FOSS-CHLKY-DULL WHT
FLOR-NO VIS CUT

4200

SAMPLES IN POOR CONDITION

1PC- LS-TN-F-XLN-SM OOL-V SM OOL-MOLDIC
POR-BRITE WHT FLOR-NO VIS CUT

FROM 4200' TO 4500' SAMPLES IN
CONDITION TOO POOR TO READ

MUD DATA @ 4233'
WT. 9.3
VIS 48

4250

SAMPLES IN POOR CONDITION

MUD DATA @ 4250'
WT. 9.3
VIS 46

MUD DATA @ 4320'
WT. 9.2
VIS 52

4300

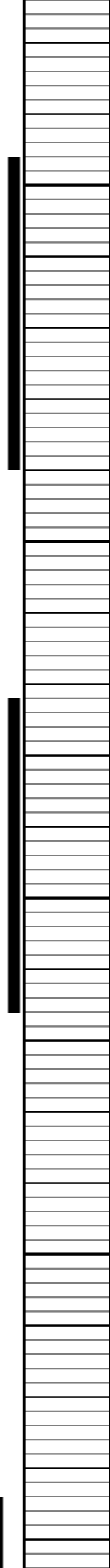
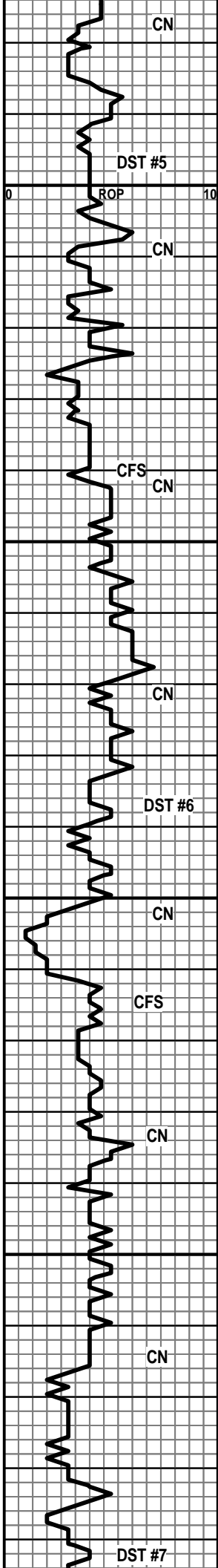
DST #4
REC-90 FT MUDDY H2O (95% MUD/5% H2O)
IBLW-FR BLDING BLW BLT TO 2 1/2 IN IN 15
MIN
FBLW-FR BLDING BLW BLT TO 4 1/2 IN IN
IN 30 MIN
15/60/30/60
SIP-1463.77-1357.38
IFP-55.42-61.19
FFP-75.58-87.33
HP-2214.65-2147.45

4350

SAMPLES IN POOR CONDITION

MUD DATA @ 4355'
WT. 9.4
VIS 50

MUD DATA @ 4356'
WT. 9.5
48



4400

B/KC

MARMATON

SAMPLES IN POOR CONDITION

4450

MISSISSIPPI

4500

CHRT-OFF WHT/GRY-OPQ-FRSH TR FRAC AND EDGE
POR-LT BRN STN-BRITE WHT FLOR-NO VIS CUT

LS-CRM-F-XLN-OOL-FOSS-HD-DNS W/ CHRT-OFF
WHT-OPQ-FRSH-W/ SH-TURQ-FRM

MISSING SAMPLE

SH-GRY-GRN-BLU-SPLNTY-TR SND

4550

LS-TN-F-XLN-HD-DNS BLOCKY

MOSTLY SHALES-GRY-GRN-SPLNTY

POOR SAMPLE

LS-DK BRN-F-XLN-HD-DNS-TR FOSS

VIOLA 4590'

FIL 10.0
LCM 0

MUD DATA @ 4395'
WT. 9.3
VIS 56

DST #5
4396'-4440'
REC-4 FT MUD
IBLW-WK SURF BLW 1/2 INCH
FBLW-WK SURF BLW
15/30/15/30
SIP-67.04-58.71
IFP-50.16-51.37
FFP-51.81-52.55
HP-2223.68-2174.63

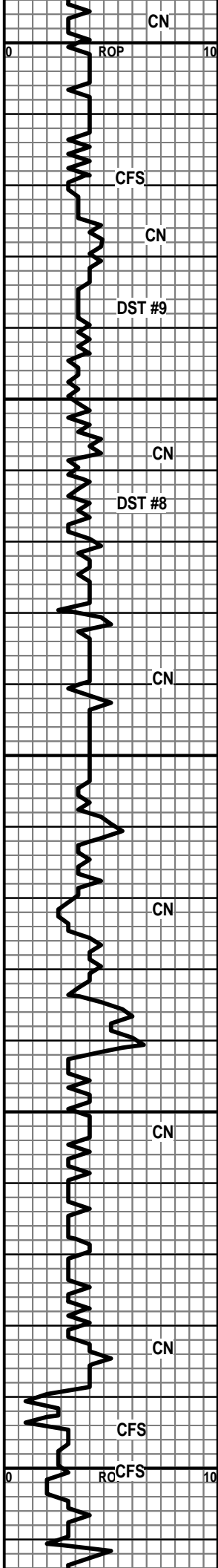
MUD DATA @ 4441'
WT. 9.3
VIS 45
FIL 10.0
LCM #1

DST #6
REC 10 FT MUD
4472'-4515'
IBLW-FR BLDING BLW BLT TO 6 1/2 INCHES
IN 30 MIN
FBLW-FR BLDING BLW BLT TO 4 1/2
INCHES THEN DIED
30/60/60/90
SIP-180.18-461.23
IFP-52.56-52.73
FFP-45.43-50.64
HP 2261.79-2161.01

MUD DATA @ 4520'
WT. 9.2
VIS 52
LCM #2

DST #7
REC-15 MUD
4584'-4620'
IBLW-WK BLW BLT TO 1 1/2 INCHES
FBLW-FR BLDING BLW BLT TO 6 AND 1/2
INCHES IN 15 IN
15/60/15/60
SIP-300.49-315.65
IFP-47.56-47.49
FFP-45.02-47.93
HP-2246.72-2213.65

MUD DATA @ 4590'
WT.9.1
VIS 56



4600
4650
4700
4750
4800

LS-CRM-F-M-GRN-BRIT TO HD-FOSS FRAGS-TR
CHLK-CHRT-OFF WHT-OPQ-FRSH-FR PP/INTER-GRN
POR-DULL WHT MIN FLOR-NO VIS CUT

LS-OFF WHT-V-F-XLN-HD-SNDY TEX-FOSS FRAGS-HD
-DNS

LS-OFF WHT-V-F-XLN-SNDY TEX-FR-SM VUG/PP
POR-LT BRN STN-1 PC-LT FLSH CUT WHEN CRSHED

LS-OFF WHT-M-GRN-TR FOSS-FR-INTER-GRN/SM VU
POR-MOSTLY DULL WHT FLOR-2 PC-BRITE
YEL/GLD-LT FLSH CUT TO RING CUT

LS-CRM TO BRN-F-GRN-HD-W/ CHRT-LT
BRN-OPQ-FRSH-TRACES OF BRITE WHT FLOR-NO
VIS CUT- PCS OF CHLK IN SAMPLE

LS-DK TN-V-F-XLN-TR FOSS FRAGS-HD-DNS W/
CHRT-OFF WHT-OPQ

LS A.A. W/ CHRT

SH-GRY-GRN-SPLNTY TR SH-DK GRY- SILTY-TR PYR
XLS IN TRAY

SS-FRSTY GRY-W/GILS-M-GRN-SUB-RND TO SUB ANG-FR
SRTED-FRI-CALC CMT-TR PP POR-NO VIS FLOR-NO VIS CUT

SS-FRSTY CLR-M-GRN-FRI-RND TO SUB-RND-PR SRTED-
INTER-GRN POR-NO VIS FLOR-NO VIS CUT

SS-FRSTY CLR-M-GRN-FRI-RND-WELL SRTED-DK
BRN STN-NO VIS FLOR-GD FLSH CUT

SHALES-BLU-SPLNTY

ARBUCKLE 4789' (

DOLO-DK TN-F-M-XLN-SUCRO-GD INTER-GRN POR-NO VIS
FLOR-NO VIS CUT 1 PC-LT FLSH CUT

VIS 50

MUD DATA @ 4619'
WT. 9.1
VIS 52
FIL 8.8
LCM #2

DST #8
REC-2 MUD
4658'-4698'
IBLW-WK SURF BLW REACHED 1/2 INCH IN
15 MIN
FBLW-VERY WK SURF BLW
15/60/15/60
SIP-637.11-105.96
IFP-46.66-48.31
FFP-48.1-48.79
HP-2309.62-2233.96
11 UNIT GAS INCRS

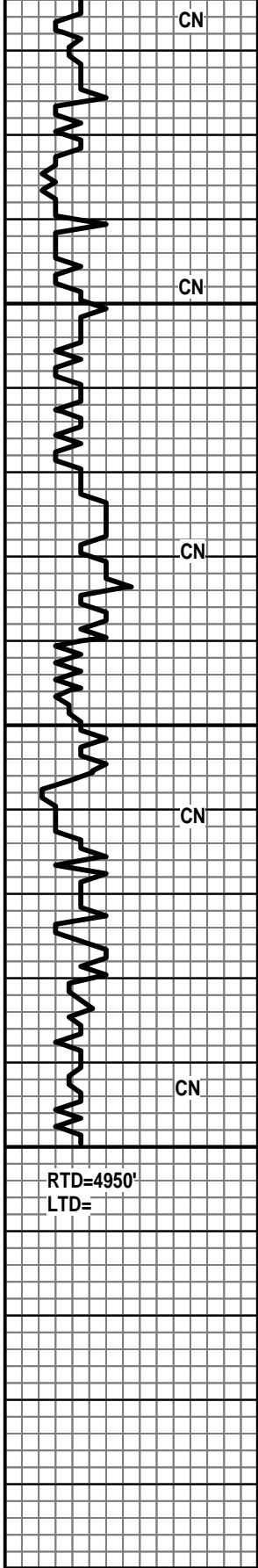
MUD DATA @4698
WT. 9.2
VIS 49
FIL 9.0
LCM #2

DST #9
4620-4698
REC 25 FT OF MUD
IBLW-WK BLW BLW 1 1/2 INCHES IN 30 SEC
FBLW-WK SURF BLW
30/60/30/60
SIP-251.38-166.49
IFP-68.42-71.28
FFP-76.23-75.27
HP-2311.68-2237.65

MUD DATA @ 4742'
WT. 9.2
VIS47
FIL 9.6
LCM #1

DST #10
4789-4800
REC 60 FT CLEAN OIL
60 FT OIL/MUD/H2O (30% OIL;10% MUD;60%
H2O)
120 FT MUD/H2O (5% MUD; 95% H2O) CHL
56,000
IBLW-FR BLDING BLW BLT 7.5 INCHES IN
15 MIN
FBLW-FR BLDING BLW BLT BOB IN 16 MIN
15/60/30/60
SIP-1718.38-1699.7C

SAMPLES MOSTLY SHALES



SAMPLES MOSTLY SHALES

DOLO-TN-F-XLN-SUCRO-HD-DNS

4850 POOR SAMPLES

4900 POOR SAMPLES

4950 POOR SAMPLES

00 POOR SAMPLES

IFP-35.24-128.51
 FFP-86.62-145.2
 HP-2367.95-2261.92

MUD DATA @ 4830
 WT. 9.0
 VIS 46
 FIL 10.4
 LCM 1 1/2