



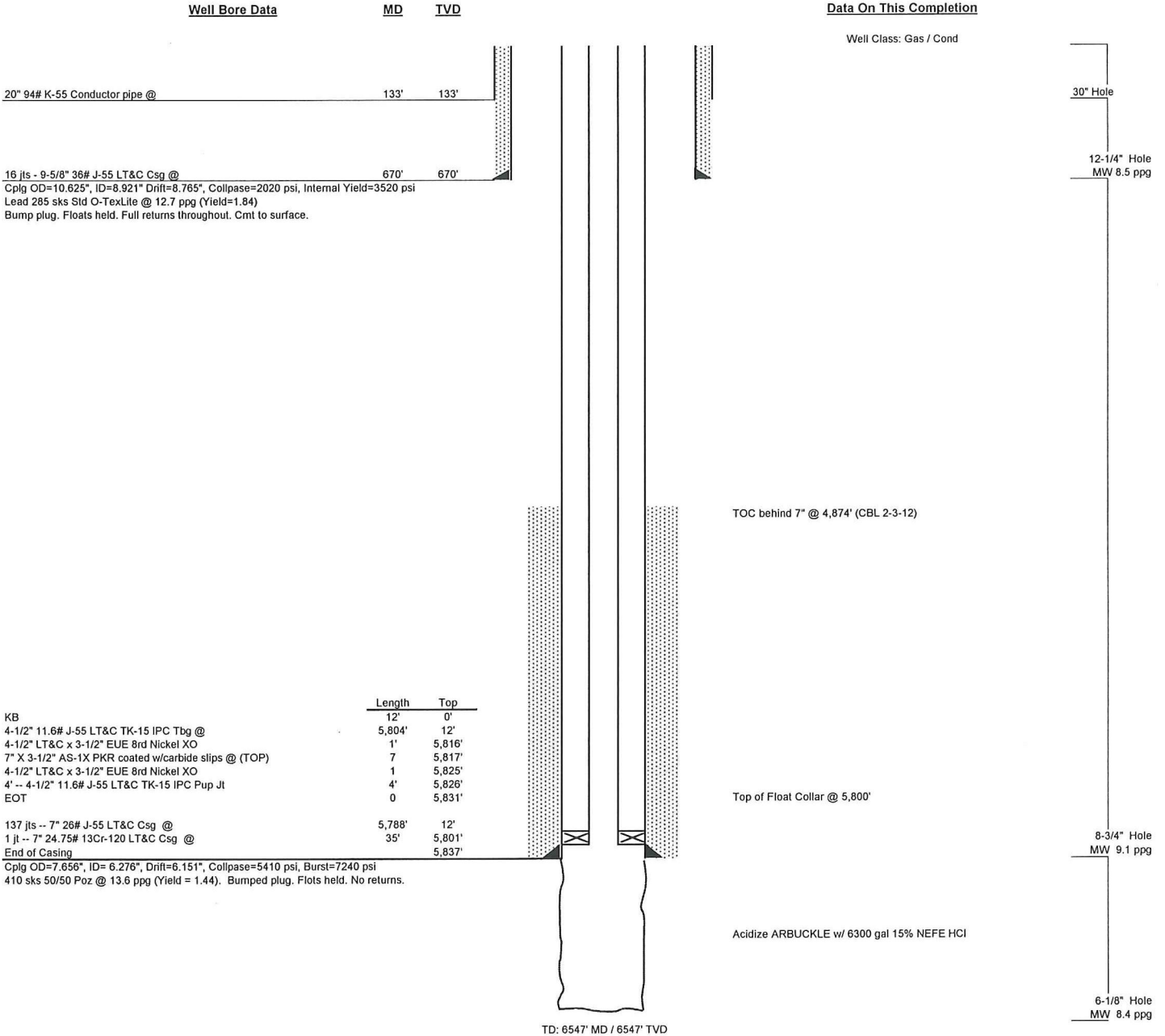
Current

Field Stranathan
 County Harper
 State Kansas
 Well **Stacey 1-23 SWD**
 Location SEC 23, TWP 34S, RGE 6W
 KB 1317'
 GL 1316'

Wellbore Schematic

15-077-21767
API NO.

Original Completion	X
Current	
Proposed	



TD: 6547' MD / 6547' TVD