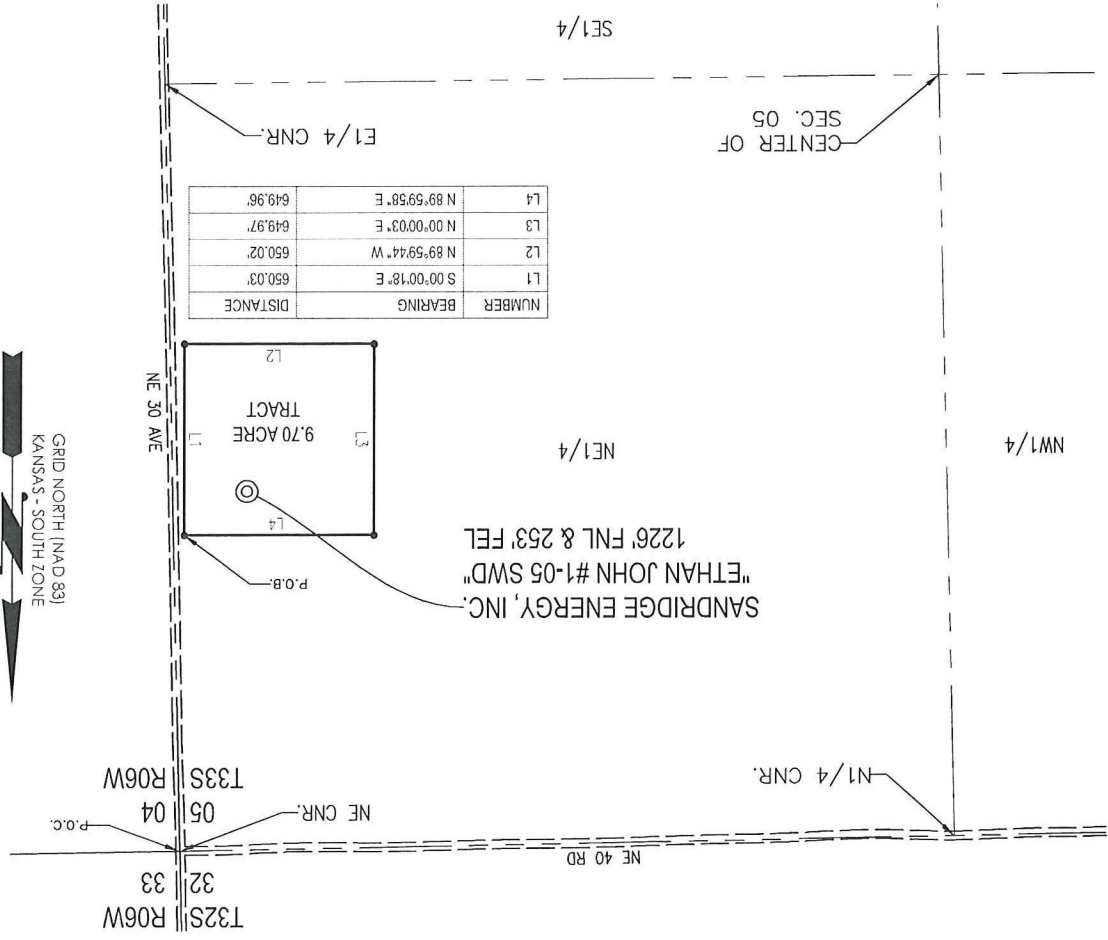


T 33 S - R 06 W

**Crafton Tull** SURVEYING  
 www.craftontull.com  
 501.328.3316 | 501.328.3325 f  
 Conway, Arkansas 72032  
 170 Commerce Road, Building 201



NUMBER	BEARING	DISTANCE
L1	S 00°00'18" E	650.03
L2	N 89°59'44" W	650.02
L3	N 00°00'03" E	649.97
L4	N 89°59'58" E	649.96

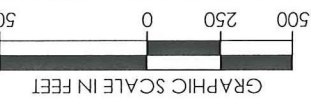
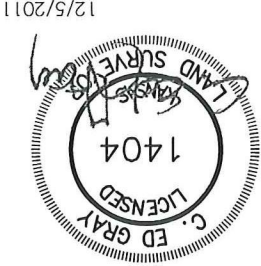
9.70 ACRE TRACT OF LAND IN THE NE 1/4 OF SECTION 05, T33S-R06W, HARPER COUNTY, KANSAS

METES AND BOUNDS DESCRIPTION (9.70 ACRE TRACT)

PART OF THE NE 1/4 OF SECTION 05, TOWNSHIP 33 SOUTH, RANGE 06 WEST, HARPER COUNTY, KANSAS, MORE PARTICULARLY DESCRIBED AS FOLLOWS:

COMMENCING AT THE NE CORNER OF SAID SECTION 05; THENCE S 01°06'46" E ALONG THE EAST LINE OF SAID SECTION 05, A DISTANCE OF 1079.63 FEET; THENCE S 88°53'14" W, A DISTANCE OF 34.96 FEET TO THE POINT OF BEGINNING; THENCE S 00°00'18" E, A DISTANCE OF 650.03 FEET; THENCE N 89°59'44" W, A DISTANCE OF 650.02 FEET; THENCE N 00°00'03" E, A DISTANCE OF 649.97 FEET; THENCE N 89°59'58" E, A DISTANCE OF 649.96 FEET TO THE POINT OF BEGINNING.

SAID TRACT CONTAINING 9.70 ACRES OF LAND AS SURVEYED.



REVISION	
<b>Sandridge</b>	
"ETHAN JOHN #1-05 SWD" PART OF THE NE 1/4 OF SECTION 05, T-33-S, R-06-W PROPOSED DRILL SITE HARPER COUNTY, KANSAS	
SCALE: 1" = 500'	PLOT DATE: 12-05-2011
DRAWN BY: S.ANDER	SHEET NO.: 1 OF 1