



**TRILOBITE
TESTING, INC.**

DRILL STEM TEST REPORT

Black Tea Oil, LLC
1011 Centennial Blvd.
Suite B
Hays, KS 67601
ATTN: Chris Leiker/Kevin B

S36-14-32 Logan, KS

Krebs E

Job Ticket: 55529

DST#: 2

Test Start: 2013.10.01 @ 20:42:00

GENERAL INFORMATION:

Formation: **Kansas City "L"**

Deviated: No Whipstock: ft (KB)

Time Tool Opened: 23:39:00

Time Test Ended: 05:17:10

Test Type: Conventional Bottom Hole (Reset)

Tester: Chuck Smith / Jace M

Unit No: 62

Interval: **4027.00 ft (KB) To 4060.00 ft (KB) (TVD)**

Total Depth: 4060.00 ft (KB) (TVD)

Hole Diameter: 7.88 inches Hole Condition: Good

Reference Elevations: 2708.00 ft (KB)

2699.00 ft (CF)

KB to GR/CF: 9.00 ft

Serial #: 6751

Outside

Press @ Run Depth: 823.20 psig @ 4057.00 ft (KB)

Start Date: 2013.10.01

End Date:

2013.10.02

Start Time: 20:42:01

End Time:

05:17:10

Capacity: 8000.00 psig

Last Calib.: 2013.10.02

Time On Btm: 2013.10.01 @ 23:38:50

Time Off Btm: 2013.10.02 @ 01:25:30

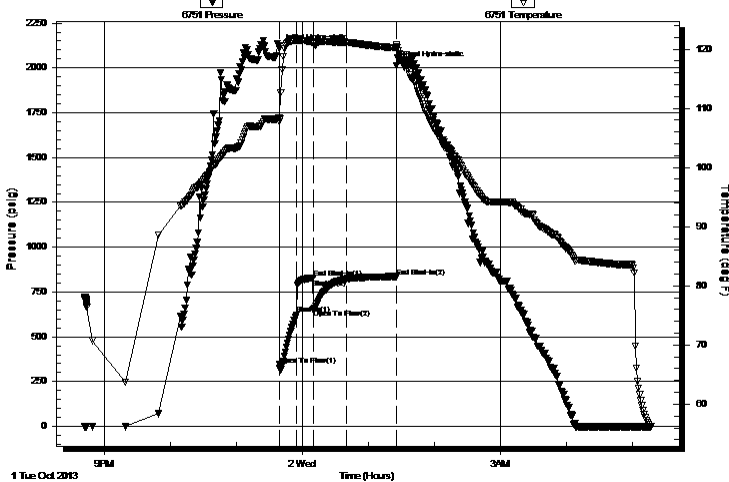
TEST COMMENT: B.O.B. @ 1 1/2 min.

No return.

B.O.B. @ 2 min.

No return blow

Pressure vs. Time



PRESSURE SUMMARY

Time (Min.)	Pressure (psig)	Temp (deg F)	Annotation
0	2109.49	108.45	Initial Hydro-static
1	344.42	107.74	Open To Flow (1)
16	624.96	121.41	Shut-In(1)
31	829.18	121.15	End Shut-In(1)
31	652.69	121.04	Open To Flow (2)
62	823.20	121.12	Shut-In(2)
107	835.75	120.20	End Shut-In(2)
107	2015.69	120.49	Final Hydro-static

Recovery

Length (ft)	Description	Volume (bbl)
728.00	100% Water	9.68
567.00	mcw 30%M 70%W oil scum	7.95
315.00	oil scum mcw 50%M 50%W	4.42
5.00	Clean Oil	0.07

Gas Rates

	Choke (inches)	Pressure (psig)	Gas Rate (Mcf/d)

* Recovery from multiple tests



**TRILOBITE
TESTING, INC.**

DRILL STEM TEST REPORT

FLUID SUMMARY

Black Tea Oil, LLC

S36-14-32 Logan, KS

1011 Centennial Blvd.
Suite B
Hays, KS 67601
ATTN: Chris Leiker/Kevin B

Krebs E

Job Ticket: 55529

DST#: 2

Test Start: 2013.10.01 @ 20:42:00

Mud and Cushion Information

Mud Type: Gel Chem
Mud Weight: 9.00 lb/gal
Viscosity: 55.00 sec/qt
Water Loss: 9.57 in³
Resistivity: ohm.m
Salinity: 3000.00 ppm
Filter Cake: 1.00 inches

Cushion Type:
Cushion Length: ft
Cushion Volume: bbl
Gas Cushion Type:
Gas Cushion Pressure: psig

Oil API: deg API
Water Salinity: ppm

Recovery Information

Recovery Table

Length ft	Description	Volume bbl
728.00	100% Water	9.684
567.00	mcw 30%M 70%W oil scum	7.954
315.00	oil scum mcw 50%M 50%W	4.419
5.00	Clean Oil	0.070

Total Length: 1615.00 ft Total Volume: 22.127 bbl

Num Fluid Samples: 0

Num Gas Bombs: 0

Serial #:

Laboratory Name:

Laboratory Location:

Recovery Comments: RW: .16 @ 55 F = 55,000

