

WELLSITE GEOLOGIST'S REPORT

J. R. Hustead
Consulting Geologist



Scale 1:240 (5"=100') Imperial
Measured Depth Log

Well Name: LENKNER NO "A" 1-13
Location: SEC 13-T 30 S-R 14 W
License Number: 15-007-23-823-00-00
Spud Date: 01-02-2012
Surface Coordinates: 1830' FNL, 2200' FEL-15' S., 55' W. OF SE NW SW NE
Region: BARBER
Drilling Completed:

Bottom Hole Coordinates: Vertical Hole

Ground Elevation (ft): 1860' K.B. Elevation (ft): 1871'
Logged Interval (ft): 2200' To: 4950' Total Depth (ft): 4950'
Formation: VIOLA
Type of Drilling Fluid: Starch, Chemical Premix (Displaced)

Printed by WellSight Log Viewer from WellSight Systems 1-800-447-1534 www.WellSight.com

OPERATOR:

Company: F.G. HOLL COMPANY LLC
Address: 9431 E. CENTRAL STE 100
WICHITA, KANSAS 67206-2563

DRILLING CONTRACTOR:

Duke Drilling Company, Rig #7
Drill Pipe 4.5 X H; DRILL COLLARS 6.25 x 2.25, 494' BHA
BIT #1: 7-7/8" PDC Q506F; WOB: 12-14; RPM 110; BIT #2 BUTTON BIT 7 7/8" WOB 34; RPM 85; KELLY BUSHING
13' ABOVE GROUND LEVEL-MIRT-JUNE 22-2011

CIRCULATION SYSTEM:

MUD-PUMP: NATIONAL 500, DUPLEX, 6.0 x 15, 56 SPM, 343GPM ; SPP: 600 PSI; STEEL PITS; MUD-CO/
SERVICE MUD, INC.; BRAD BORTZ

GAS DETECTION SYSTEM:

MBC WELL LOGGING AND LEASING
ANALOG HOTWIRE AND CHROMATOGRAPH

OPEN HOLE LOGS:


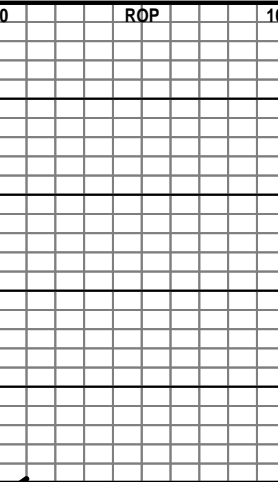
DN (PE), DI (SP), ML: Sonic; . LogTech, Hays, KS, K Bange. Log total depth (3829') matched rotary depth.

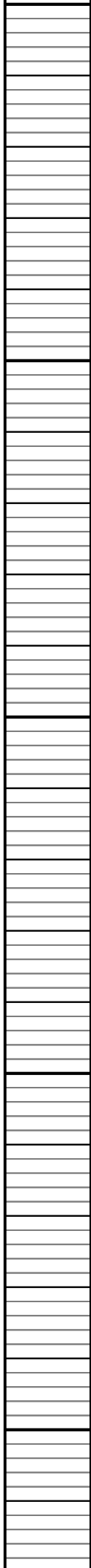
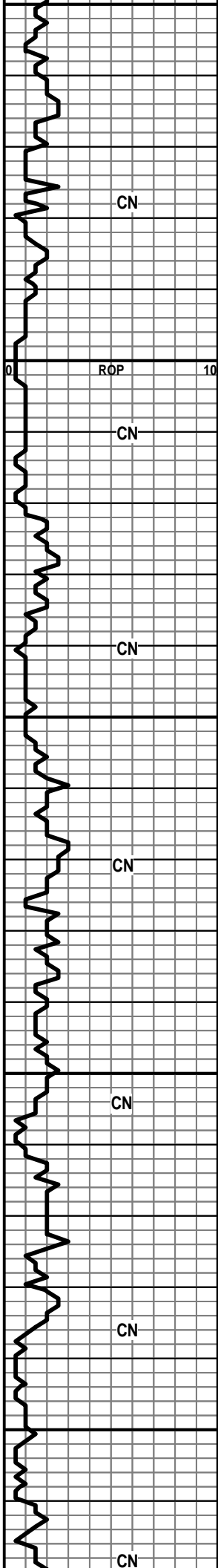
COMPLETION:

ABANDONED

WELLSITE GEOLOGIST:

Rene Husted
 600 N. WINWOOD ST
 GARDNER, KS 66030
 (913) 908-3390

ROP ROP (min/ft) 	DST	Lithology	Porosity and Shew Depth	Geological Descriptions	TG, C1-C4 / REMARKS
			20		
CN			2050		
CN			2100	ANHY-FRSTY WHT-RNDED-PYR XLS IMBD-SH-GRY-WAXY	
CN				LS-LT BRN F-XLN-BRIT-OOL-DNS	
CN				HERINGTON DOLO-LT GRY-F-GRN-BLOCKY-HD-DNS DOLO-LT GRY W/ BLK SPECS-BRIT TO HD-PR PP POR	
CN			20	DOLO A.A.	



215
2200
2250
2300
2350

SH-GRY-BLKY-WAXY

WINFIELD

DOLO-GRY-F-GRN-BRIT-FOSS FRAGS-FR PP POR

DOLO-M-GRN-BRIT-FOSS FRAGS-TR CHLK-FR PP
POR

DOLO-GRY-M-GRN-SLI CHLKY-FOSS FRAGS-FR PP
POR-

LS-GRY-V-F-XLN-HD-FOSS-DNS

TOWANDA

POOR SAMPLE

SH-GRY-FRM-BLKY-LMY

LS-GRY-F-XLN-HD-DNS

LS-GRY-F-XLN-HD-SHLY-FOSS-DNS-CHRT-GRY-
OPQ-FRSH

LS A.A. CHRTY

FT RILEY

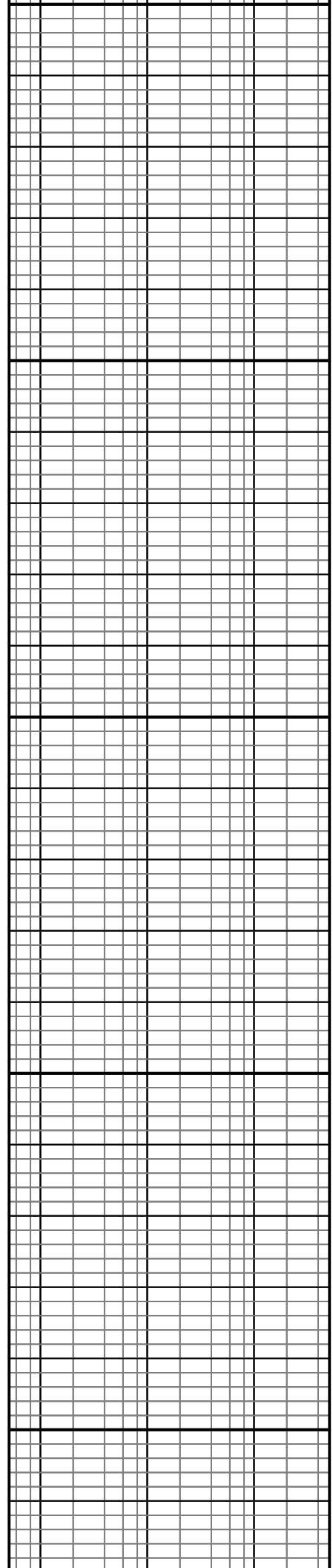
LS-LT TN-F-GRN-TR FOSS-TR SH IMBD-PR TO FR
INTER-GRN POR

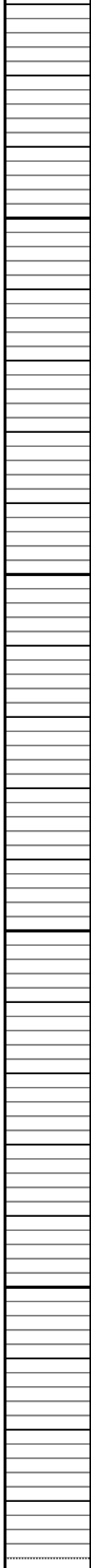
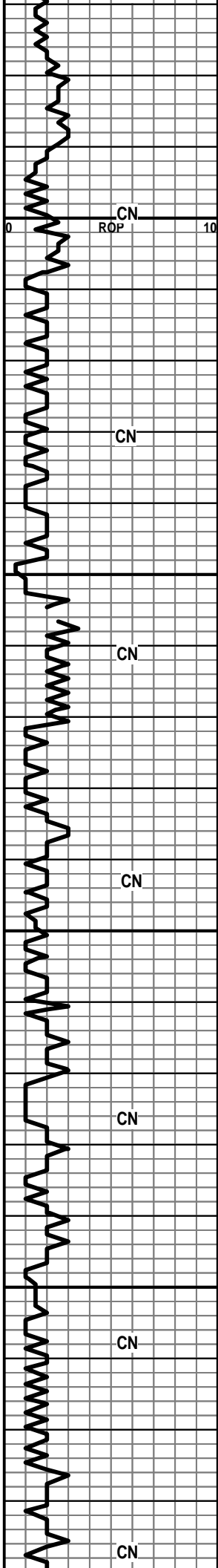
LS-GRY-F-XLN-HD-DNS W/ CHRT-GRY-OPQ-FRSH

SH-GRY-F-RM-LMY

POOR SAMPLES

POOR SAMPLES





LS-LT BRN-F-GRN-BRIT-DNS
SH-GRY-DK GRY-WAXY

2400 LS-CRM-F-XLN-V-OOL-HD-DNS

LS A.A.

LS-CRM-V-F-XLN-V-OOL-BRITTO HD-SLI CHLKY IP

LS-CRM TN-F-XLN-OOL-BRIT TO HD-TR OOL-MOLDIC POR

2450 **B/FLORENCE**

LS-GRY-F-XLN-HD-SHLY-DNS

COUNCIL GROVE

SH-GRY-BLKY-WAXY

LS-TN-V-F-XLN-OOL-FOSS-HD-DNS

2500 LS-OFF WHT-F-XLN-TR FOSS-TR VUG POR

LS-TN-F-XLN-OOL-FOSS-TR SM VUG POR

SH-GRY-SFT-GUMMY

LS-GRY-F-XLN-HD-FOSS SHELLS

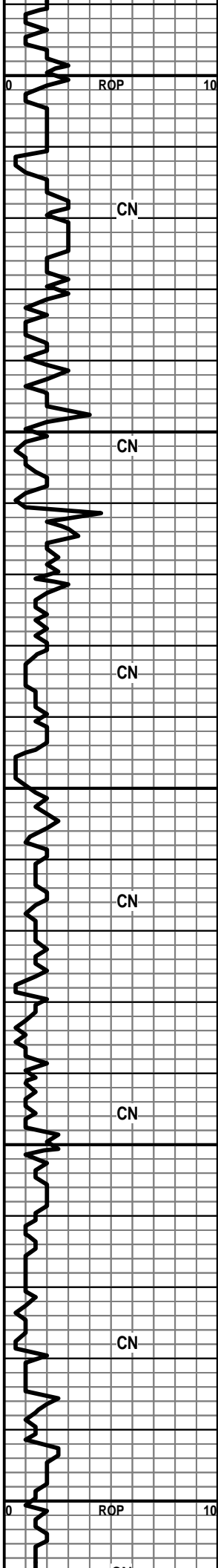
SHALES RED-GRN-GRY

LS-TN-F-XLN-HD-DNS W/ CHRT-TN-OPQ-FRSH

2550 LS-OFF WHT-F-XLN-HD-FOSS FRAGS-DNS

LS-OFF WHT-F-GRN MATRIX-LG OOL-PR-OOL-MOLDIC POR

LS-TN-F-XLN-VOOL-HD-DNS -TRACE OF VUG POR



SH-LT GRY-BLKY-WAXY

2600 LS-CRM/LT BRN-V-OOL-W/ DK BRN SH-FR INTER-PRT
POR-SCATT YEL /GLD FLOR-NO VIS CUT

LS-GRY-F-XLN-SHLY-HD-DNS

LS-TN-F-XLN-SLI CHLKY-BRIT-FOSS FRAGS-PR
INTER-PRT/XLN POR-DULL WHT MIN FLOR-NO VIS
SHOW

2650 LS-GRY-F-XLN-VOOL-SH LT GRY DISS-PR
OOL-MOLDIC POR-DULL WHT MIN FLOR W/
CHRT-GRY-OPQ-FOSS-FRSH

SH-GRY-SFT-WAXY

LS-GRY-F-XLN-SHLY-HD-DNS

LS-OFF WHT-F-XLN-HD-V-FOSS-DNS W/
CHRT-TN-OPQ-FRSH

SHALES-GRY/RED-W/ LS-TN-F-XLN-HD-DNS-TRACE
OF CHRT

2700 SHALES AND LS A.A.

POOR SAMPLE

LS-OFF WHT/GRY-F-XLN-BRIT-CHLKY-FOSS-OOL-
NO VIS POR TO TR FR OOL-MOLDIC POR-DULL WHT
FLOR

LS-GRY/TN-F-XLN-SHLY-HD-DNS

2750 LS-GRY-F-XLN-OOL-HD-DNS

SH-RED-BLKY

RED EAGLE

POOR SAMPLES

POOR SAMPLES

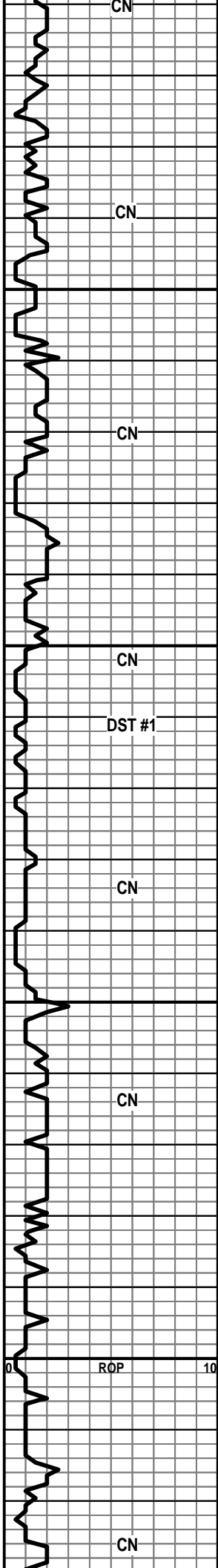
LS-GRY-F-XLN-SHLY-HD-DNS

2800 LS-OFF WHT/BLK SPECS-M-GRN-BRIT-SLI
CHLKY-FOSS -OOL-TR SH IMBD-PR INTER-GRN
POR-DULL WHT MIN FLOR

MUD DATA @ 2701
WT. 10.5
VIS 33

2714' DISPLACE
NATIVE TO CHEMICAL

WT. 8.7
VIS 56

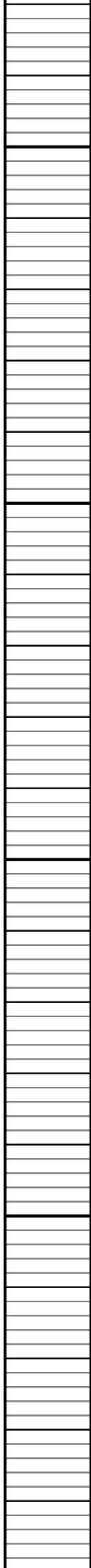
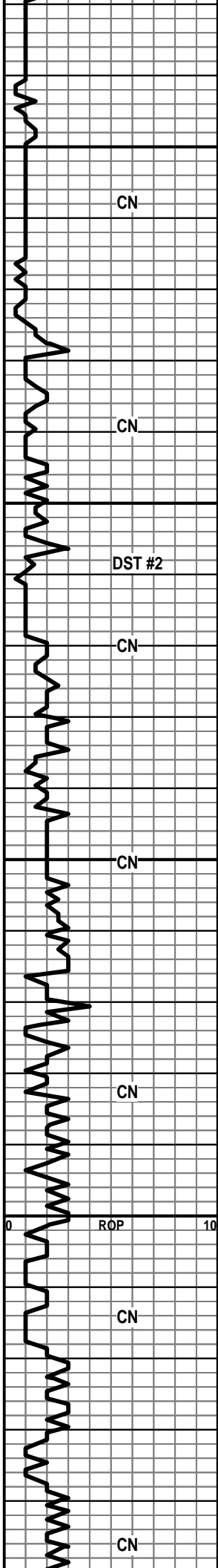


SLTSS AND SH-GRY-BLKY-WAXY
 SH-GRY-BLKY-V-FOSS W/ LS-GRY-F-XLN-V-SHLY-DNS
 MISSING SAMPLE
 LS-TN-F-XLN-OOL-FOSS-BRIT-DNS
 MISSING SAMPLE
ONAGA
 SS-FRSTY GRY-V-F-GRN-FRI-RNDED-WELL SRTE-TR
 HEM TR GLAU-FR INTER-GRN POR-SLI SHLY
 SLTSS-FRSTY GRY-F-GRN-V-SHLY-HEM
 SS/SLTSS A.A.
WABAUNSEE 2950 (-1079')
 LS-TN-F-XLN-BRIT-V-FOSS-OOL-PR TO FR
 INTER-FOSS POR/SM VUG POR-NO VIS FLOR-NO VIS
 CUT
 SH-GRY-F-RM-LMY
 LS-BRN-F-XLN-HD-FOSS-TR SH IMBD-DNS
 LS-GRY-F-XLN-HD-DNS
 LS-CRM-F-XLN-V-FOSS-V-SNDY-TR INTER-GRN
 POR-DULL WHT MIN FLOR-NO VIS SHOW W/ SLTSS IN
 TRAY
 SLTSS-FRSTY-GRY-F-GRN-V-SHLY-HEM-
 LS-LT TN-F-XLN-BRIT-LG OOL-TR POOR OOL-MOLDIC
 POR/SM VUG-NO VIS FLOR-NO VIS SHOW WITH
 SLTSS
 SS-FRSTY GRY/YEL-F-GRN-RNDED-FR

GEO ON SITE AT 2900'

DST #1
 2889'-2960'
 REC-10 FT MUD
 IBLW-WK BLW BLT TO
 1 INCH
 FBLW-V-WK SURF BLW
 15/30/15/30
 SIP-804.3-672.44
 IFP-61.22-66.43
 FFP-68.56-71.04
 HP-1391.8-1369.13

MUD DATA @ 3079
 WT. 9.0
 VIS 49
 FIL 8.8



3050
 SRTE-SHLY-FOSS-TR INTER-GRN POR-TO NO VIS
 POR-DULL WHT MIN FLOR-NO VIS SHOW

SH-GRY-SFT-SLTY-GUMMY-FOSS-FUS

SH-GRY-SFT-GUMMY-SLTY-FOSS-FUS-BRYO

SH A.A.

STOTLER 3078' (-1207')

MISSING SAMPLE-SAMPLES WITH SMALL PAPER
 LABELS -SOME SAMPLES WITHOUT

3100

SS-FRSTY GRY-M-F-GRN-FRI TO TT-RNDED
 TOSUB-RNDED-FR TO PR SRTE-CALC
 CMT-GLAU-FR INTER-GRN POR-NO VIS FLOR-NO VIS
 CUT W SH-DK GRY-FRM-BLKY-LMY

TARKIO 3119' (-1248')

LS-LT BRN-V-F-XLN-FOSS-BRIT TO HD-TR
 INTER-FOSS POR-NO VIS FLOR-NO VIS CUT

SH-DK GRY-LMY

3150

LS-CRM-F-XLN-SM FOSS FRAGS-HD-DNS

LS-TN-V-F-XLN-HD-DNS W/ CHRT-OFF
 WHT-OPQ-FRSH IN TRAY

LS-TN-F-XLN-FOSS FRAGS-OOL-HD-DNS

LS-GRY-V-F-GRN-FOSS-HD-DNS

LS-TN-F-GRN-FOSS FRAGS-FR INTER-GRN AND FRAC
 POR-DULL WHT FLOR

BERN 3194' (-1323')

3200

LS-OFF WHT-F-XLN-SM OOL-SNDY-V-F-OOL-MOLDIC
 POR-NO VIS FLOR

LS A.A.

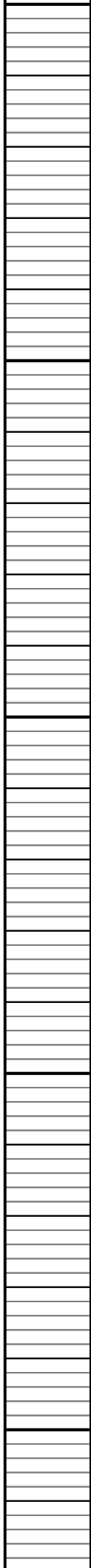
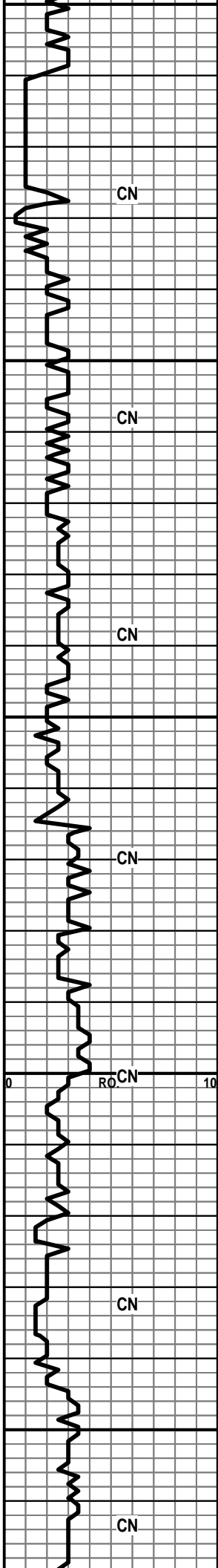
LS-OFF WHT-F-XLN-FOSS FRAGS-HD-DNS

LS A.A. W/CHLK IN TRAY

30

LS-TN-F-XLN-TR SUCRO-FOSS-BRIT-TR SM
 VUG/INTER-XLN POR-NO VIS FLOR-NO VIS SHOW

DST #2
 3102'-3166'
 REC-15 FT MUD
 IBLW-GD BLW-BOB IN
 9 MIN
 FBLW-STRNG BLW
 BOB IN 30 SEC /GAS
 TO SURF IN 4 MIN-TOO
 WEAK TO GAUGE
 SIP-694.67-538.76
 IFP-118.33-82.19
 FFP-82.60-86.28
 HP-1533.62-1510.44



325
3300
3350
3400
3450

SH-LT GRY-BLKY-LMY

HOWARD 3287' (-1416')

LS-TN-M-XLN-SUCRO IP-BRIT-FR SM VUG POR-NO VIS FLOR-NO VIS CUT

LS-LT BRN-F-XLN-V-OOL-HD-DNS W/ FEW PC OF CHLK IN TRAY

LS-CRM-F-XLN-TR FOSS FRAGS-TR SM VUG POR-DULL WHT MIN FLOR-NO VIS CUT

LS-TN/GRY-F-XLN-BLOCKY-FOSS-SHLY IP-TR ISO FOSS VUG-DULL WHT MIN FLOR-NO VIS CUT

SH-DK GRY-RED-SPLNTY

SHALES-RED-GRN-GRY-SPNTY

3350 LS-OFF WHT-F-XLN-BLOCKY-HD-FOSS-TR SH-DNS LG PYR XLS IN TRAY

SH-DK GRY-SPLNTY

TOPEKA 3367' (-1496')

LS-TN-F-XLN-HD-FOSS-FRAGS-DNS

LS-GRY-F-XLN-HD-FOSS-SHELLS-DNS W/ SH GRY-SPLNTY AND PYR XLS IN TRAY

3400 LS-OFF WHT-V-F-GRN MATRIX-W SM FOSS FRAGS-ABUNDT SM GLAU XLS IMBD-NO VIS POR-NO VIS FLOR

LS-CRM-F-XLN-FOSS FRAGS-FR TO GD FOSS VUG POR-DULL WHT FLOR-NO VIS CUT

LS-CRM-F-XLN-FOSS FRAGS-TR FOSS VUG POR-NO VIS FLOR-NO VIS CUT

LS A.A. CHLKY

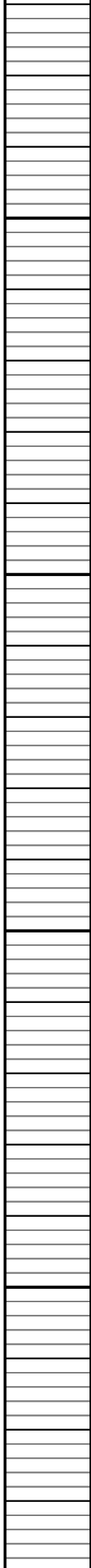
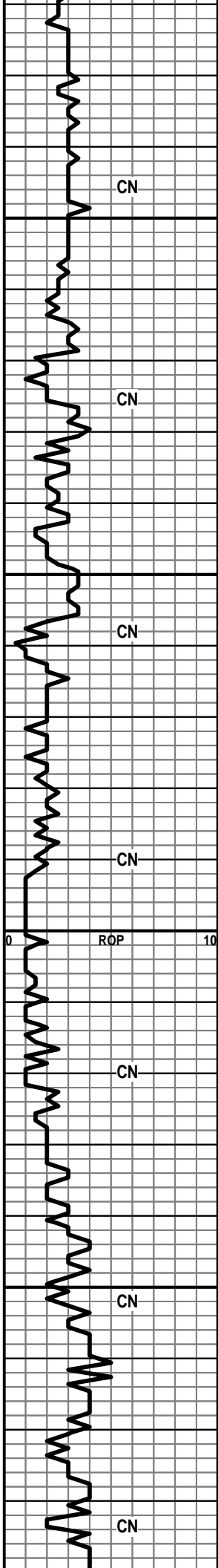
LS-CRM-F-XLN-BRIT-SNDY TEX-TR FOSS FRAGS-CHLKY-DNS

3450 LS-CRM-F-XLN-OOL-HD-DNS W/ TR DK BLK STN ON EDGE-NO VIS FLOR-NO VIS CUT

LS-CRM-F-XLN-HD-OOL-FOSS-DNS

MUD DATA @3341
WT. 9.4
VIS 51
FIL 9.2

WT. 9.4
VIS 49



LS-LT BRN-F-GRN-FOSS FRAGS-SHLY-NO VIS
FLOR-NO VIS CUT

LS-CRM-F-XLN-OOL-HD-DNS W/
CHRT-TN-OPQ-FRSH-SH-GRY-SPLNTY

3500

LS-CRM-F-XLN-OOL-FOSS-FRAGS-HD-DNS W/ SH-DK
GRY-BLKY-PYR XLS

POOR SAMPLES

3550

SH-DK GRY-SPLNTY-FOSS-SHELLS

LS-TN-M-XLN-CHLKY IP-FOSS-OOL-MOSTLY DULL
WHT MIN FLOR W/ TR SCATT YEL FLOR-NO VIS CUT
NOTE -SAMPLES ARE VERY SMALL

LS-TN-F-XLN-HD-FOSS-SHLY-DNS

3600

LS-OFF WHT-M-GRN/XLN-FOSS-TR SH-FR INTER-XLN
POR-NO VIS FLOR-NO VIS CUT-LG XLS-LT BRN
STN-NO VIS FLOR-NO VIS CUT

LS-CRM-M-CRS XLS-BRIT-FOSS-FR INTER-XLN/GRN
POR-TR DK BRN STN-NO VIS FLOR-NO VIS CUT-

LS-TN-F-XLN-OOL-FOSS-HD-SHLY-DNS

SH-GRY-FRM-LMY

POOR SAMPLE-VERY SHLY

3650

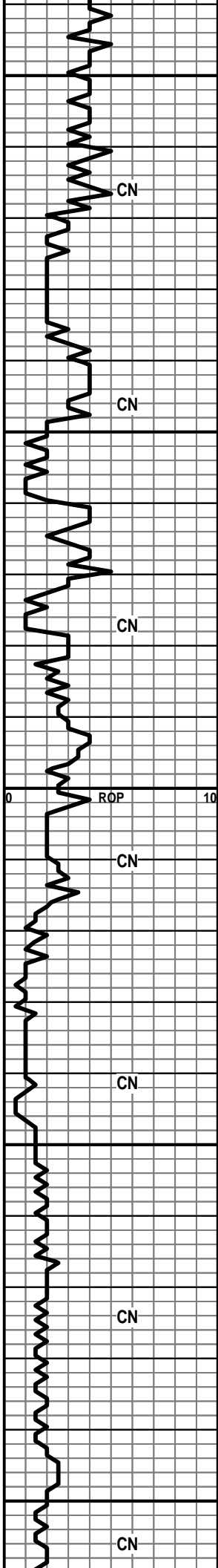
POOR SAMPLE

POOR SAMPLE

LS-TN-V-F-XLN-HD-TR FOSS-DN:

WT. 9.4
VIS 48

WT. 9.4
VIS 52



3700
3750
3800
3850
3900

LS-CRM-F-XLN-HD-SM FOSS FRAGS-DNS

LS-TN-F-XLN-HD-DNS

SH-GRY-SPLNTY

LS-OFF WHT-F-XLN-BRIT-CHLKY-NO VIS POR-DULL
WHT MIN FLOR

LS-OFF WHT-F-XLN-HD-FOSS-DNS

SH-DK GRY-FRM-BLKY

HEEBNER 3772' (-1901')

SH-BLK-CARB

TORONTO 3788' (-1917')

LS-OFF WHT/TN-V-F-XLN-HD-DNS -TR FOSS-SAMPLE
CHLKY IP

LS-OFF WHT-F-XLN-V-FOSS-V-SM PYR XLS-HD-DNS
W/ LS-OFF WHT-CHLKY

DOUGLAS SAND 3804' (-1933')

SH-LT GRY-SFT-V-SLTY

SS-FRSTY GRY-F-GRN-FRI-SUB RNDED TO RNDED-FR
SRTE-CALC CMT-TR HEM W/ SLTSS-FRSTY
GRY-F-GRN-SHLY-HEM

SS-FRSTY GRY-F-GRN-FRI TO TT-RNDED-WELL
SRTE-CALC CMT-HEM -PR INTER-GRN POR-NO VIS
FLOR-NO VIS CUT

SS-FRSTY WHT-F-XLN-V-TT-RNDED-WELL SRTE-TR
CALC CMT-DNS

SH-DK GRY-FRM-SLTY

SLTSS-FRSTY GRY-F-GRN-SHLY-HEM 1 PC
-SS-FRSTY WHT-F-GRN-TT-RNDED-WELL
SRTE-HEM-FR INTER-GRN-NO VIS FLOR-NO VIS CUT

SLTSS AND SS A.A.

MUD DATA @3806
WT. 9.6
VIS 48
FIL 9.6

SH-GRY- WAXY

LS-LT BRN-F-XLN-V-FOSS-SM GASTROPOD FOSS-PR TO FR FOSS VUG POR-NO VIS FLOR-NO VIS CUT

SS-FRSTY GRY-M-F-GRN-SUB-ANG-FR SRTEDE-CALC CMT-HEM -TR INTER-GRN POR-NO VIS FLOR-NO VIS CUT

BROWN LS 3951' (-2080')

3950

LS-DK BRN-F-XLN-V-FOSS-HD-DNS

LANSING/KC 3961' (-2090')

LS-DK BRN-F-XLN-FOSS-OOL-HD-DNS W/ LS-OFF WHT/BLK SPECS-F-XLN CHLKY MATRIX-BLK LG OOL-TR OOL-MOLDIC POR IP TO NO VIS POR-DULL WHT MIN FLOR-NO VIS CUT

LS-DK TN-F-XLN-HD-DNS

LS-DK BRN-F-XLN-V-FOSS-OOL-HD-DNS W/ CHLK IN TRAY

4000

LS-CRM-F-XLN-SNDY TEX-SM OOL-F-PP POR-LT BRN STN -YEL/GLD FLOR-GD FLSH CUT-STRNG ODOR

LS-OFF WHT-F-XLN-BRIT-CHLKY-DULL WHT MIN FLOR-NO VIS CUT

LS-DK BRN-F-XLN-V-SM PYR XLS IMBD-HD-DNS

LS-TN-F-XLN- CHLKY IP -BRIT-HD-DNS W/ CHLK IN TRAY

4050

SH-DK GRY-FRM-LMT-PYR XLS

MISSING SAMPLES

LS-TN-V-F-XLN-CHRTY-HD-DNS-NO VIS POR IN WET OR DRY SAMPLE

LS-CRM--F-XLN-V-FOSS-OOLSLI CHLKY-TR SM VUG/FAC POR-NO VIS FLOR-NO VIS CUT

LS-DK GRY-F-XLN-SLI SUCRO-HD-DNS

LS-LT BRN-F-XLN-FOSS-HD-DNS W/ SH-DK GRY-SPLNTY

4100

LS-CRM-M-XLN-SLI CHLKY-FOSS FRAGS-TR INTER-XLN/VUG POR-NO VIS FLOR-NO VIS CUT

LS-DK GRY-F-XLN-TR FOSS-HD-DNS

LS-TN-F-XLN-BRIT-V-SM OOL-SM-OOL-MOLDIC POR-NO VIS FLOR-NO VIS CUT

DST #3
4004'-4016'
REC 210 FT GAS AND OIL CUT MUD
-5%GAS-15% OIL-60% MUD-20% H2O
240 FT-MUDDY
H2O-10%MUD-90% H2O
IBLW-STRNG BLW-BOB IN 1 MIN/NO BLWBK
FBLW-STRNG
BLW/BOB IN 30
SEC/GAS TO SURF IN
29 MIN/BLWBK BLT TO 6 INCHES

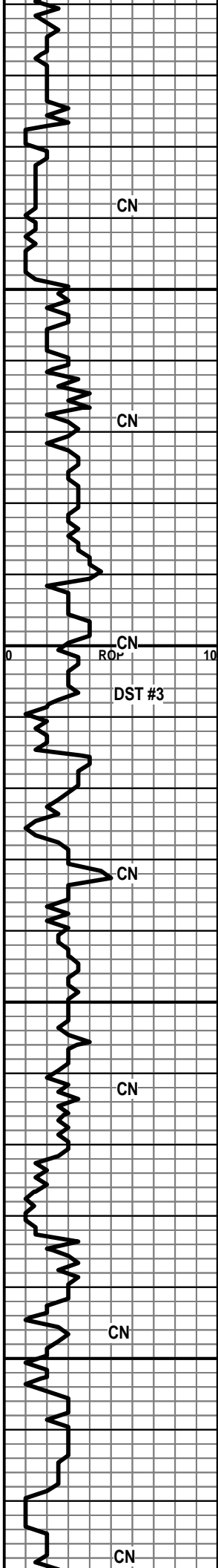
5/60/45/90
SIP-1478.97-1436.15
IFP-87.68-138.22
FFP-114.95-257.29
HP-1990.92-1977.82

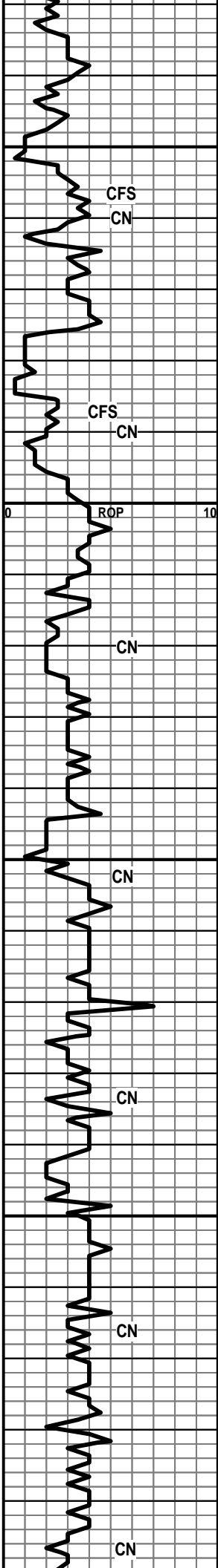
GAS RATE				
FLOW	TIME	INCHES	PSIA	MCF/D
2	30	.13	4.68	1.75
2	30	.13	7.59	2.84

MUD DATA @ 4033
WT. 9.5
VIS 56
FIL 9.6

WT. 9.4
VIS 55

WT. 9.4
VIS 52





4150 LS-DK TN-F-XLN-HD-DNS W/ CHRT-BRN-OPQ-FRSH

LS-CRM-F-XLN-SLI CHLKY-OOL-FR OOL-MOLDIC
POR-NO VIS CUT-NO VIS SHOW

4150 LS-TN-F-XLN-HD-DNS

LS-TN-F-XLN-OOL-FR OOL-MOLDIC POR-NO VIS
SHOW

LS-CRM-F-XLN-HD-DNS

LS-TN-F-XLN-HD-DNS W/ LS-TN-F-XLN-PR TO FR
OOL-MOLDIC POR-NO VIS FLOR-NO VIS CUT W/
CHRT-TN-OPQ-FRSH

LS-TN-F-XLN-V-FOSS-OOL-CHLKY IP-FR SM VUG
POR-NO VIS FLOR TO RARE BRITE WHT FLOR-NO VIS
CUT

4200 LS-CRM-F-XLN-OOL-HD-DNS W/ TR VUG POR-NO VIS
FLOR-NO VIS CUT

LS-CRM-F-XLN-OOL-FOSS FRAGS-HD-DNS

WT. 9.4
VIS 55

LS-TN-F-XLN-BRIT-OOL-FOSS-CHLKY IP-TR SM VUG
POR-DULL WHT MIN FLOR-NO VIS CUT

SH-DK GRY-BLKY-FOSS

LS A.A. W/PYR XLS IN TRAY

LS-TN-F-XLN-BRIT-OOL-TR PR OOL-MOLDIC
POR-DULL WHT MIN FLOR-NO VIS CUT

4250 LS-TN-F-XLN-HD-DNS
SH-DK GRY-SPLNTY

LS-TN-F-XLN-HD-DNS W/ CHLK IN TRAY

LS A.A.
SH-DK GRY-SPLNTY

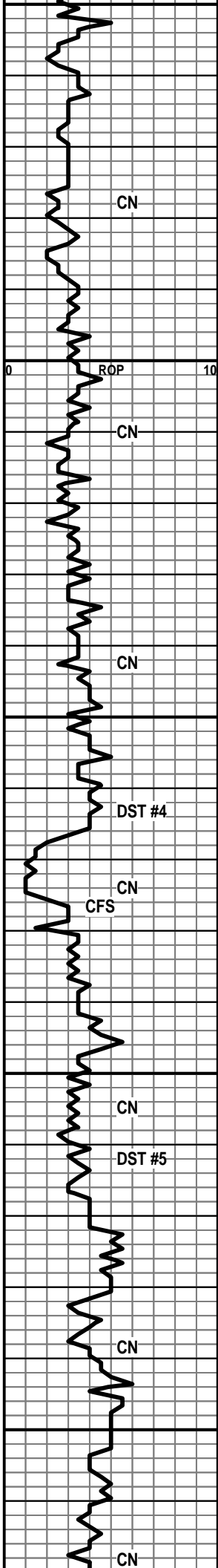
LS-CRM-F-XLN-FOSS-OOL-CHLKY-F-SM VUG
POR-DUL WHT FLOR-NO VIS CUT W/
CHRT-BRN-OPQ-FRSH

4300 LS-CRM-F-XLN-FOSS-HD-DNS W/ PYR AND CHRT IN
TRAY

POOR SAMPLE

POOR SAMPLE

50



4350
4400
4450
4500
4550

SH-DK GRY-WAXY

MARMATON 4358' (

LS-TN/GRY-F-XLN-HD TO BRIT-FOSS/SHLY-TR SM
VUG POR-DULL WHT FLOR-NO VIS CUT

LS-CRM-TO OFF WHT-F-XLN-BRIT-CHLKY-NO VIS
POR-NO VIS FLOR

LS-TN-F-XLN-HD-DNS W/ PCS OF CHLK IN TRAY

LS-TN-F-XLN-HD-DSN W/ CHRT-OFF WHT-OPQ- FRSH

LS-TN-F-XLN-HD-CHRTY-NO VIS POR-LT BRN STN
IP-SCATT YEL/GLD FLOR-NO VIS CUT ---SEVERAL PC
OF CHRT-CRM/BRN-OPQ-FRSH-LT BRN STN-YEL/GLI
FLOR-NO VIS CUT

MISS 4420' (-2549')

LS/CHRT A.A.

SHALES-GRN-GRY-RED-W/ CHRT-OFF WHT
OPQ-FRSH W/ DK BLK STN

SHALES AND CHRT A.A.

CHRT-TN-OFF WHT-OPQ-FRSH-W/LT BRN STN IP-TR
SH GRY AND RED-SEV PCS OF SS AND LS

CHRT-TN/OFF WHT-OPQ-FRSH-SOME TRIP- W/ LT
BRN STN-DULL GLD FLOR-NO VIS CUT

CHRT-OFF WHT/TN-OPQ-FRSH W/ LT BRN STN -DULL
GLD FLOR-SEV PCS OF SS-FRSTY
WHT-F-GRN-TT-BLOCKY-RNDED-WELL
SRTEG-GLAU-NO SHOW

LS-OFF WHT-F-XLN-HD-DNS W/ CHRT-OFF
WHT-OPQ-FRSH

SHALES AND CHRT-OFF WHT-OPQ-FRSH -FEW PCS
WITH LT BRN STN

SHALES AND CHRT A.A.

SH AND CHRT-VARIG-FRSH-FRAC-LT BRN STN-FREE
OIL/SOME TRIP CHRT-OFF WHT-FR PP POR-LT BRN
STN

SS-GRY-F-GRN-TT-RND-WELL SRTEG-CLAY
MATRIX-NO VIS POR

LS-LT BRN-V-F-GRN-SUCRO-PR PP POR-YEL/GLD
FLOR-GD FLSH CUT-GD ODOR

DOLO/LS-OFF WHT-F-GRN-SNDY TEX-PR PP
POR-DULL WHT FLOR-3 PC LT FLSH CUT-W/
CHRT-OFF WHT-OPQ-FRSH-W/ LT BRN STN

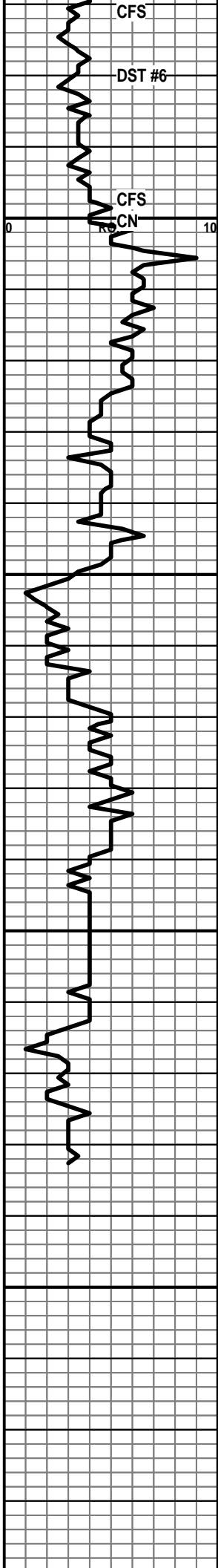
MUD DATA @ 4377'
WT. 9.8
VIS 61
FIL 10.0

DST #4
4460'-4479'
REC-780' GIP AND 15'
MUD
IBLW-FR BLW-BOB IN
29 MIN
FBLW-FR BLW-BLT
BOB IN 42 MIN
30/60/45/90
SIP-248.97-363.12
IFP-82.07-85.08
FFP-73.29-86.46
HP-2226.2-2181.7

MUD DATA @ 4479'
WT. 9.4
VIS 54
FIL 8.8
LCM #2

WT. 9.3
VIS 64

DST #5
REC 15' MUD
4485'-4570'
IBLW-WK BLW BLT TO
3 INCHES
FBLW-NO BLW
30/60/15/60
SIP-162.4-149.1
IFP-101.71-113.07
FFP-126.24-128.41
HP-2256.37-2217.64



SS-FRSTY CLR-M-GRN-TT-ANG TO SUB-ANG-PR
 SRTED-CALC CMT-SHLY-HEM-PYR IMBD IP-W/
 SH-BLU-WAXY-SNDY

SHALES-BLU-W/ CHRT-OFF WHT-OPQ-FRSH-DOLO
 A.A.

4600 DOLO-OFF WHT-F-GRN-SNDY TEX-FR TO PR PP
 POR-LT BRN STN-DULL YEL FLOR-GD FLSH CUT W/
 CHRT-OOF WHT-OPQ- FRSH TO TRIP-LT BRN STN

SH-BLU-SFT-SLTY

SIMPSON SD 4645'

4650 SS-CLR-M-GRN-TT-SUB-ANG TO RND-FR
 SRTED-CALC CMT-HEM AND SH-LT BRN STN-SCATT
 GLD FLOR-GD FLSH CUT WHEN CRSHED

4700

4750

MUD DATA @ 4570'
 WT. 9.3
 VIS 66
 FIL 9.2
 LCM #3

DST #6
 4572'-4633'
 REC 5 FT MUD
 TBLW-WK BLW-BLW
 BLT TO 1 INCH
 FBLW-NO BLW
 15/30/15/60
 SIP-117.03-131.16
 IFP-77.89-84.67
 FFP-94.43-99.35
 HP-2255.27-2209.55

MUD DATA @ 4644'
 WT. 9.3
 VIS 56
 FIL 9.2
 LCM #2

