



**TRILOBITE
TESTING, INC.**

DRILL STEM TEST REPORT

Grand Mesa Operating Co.

4 16s 32w Scott, Ks

1700 N. Waterfront Pkw y
Bldg 600
Wichita, Ks 67206
ATTN: John Goldsmith

Hoeme 1-4

Job Ticket: 44522

DST#: 6

Test Start: 2012.03.21 @ 12:35:00

GENERAL INFORMATION:

Formation: **Atoka**

Deviated: No Whipstock: ft (KB)

Time Tool Opened: 14:47:15

Time Test Ended: 19:04:30

Test Type: Conventional Bottom Hole (Reset)

Tester: Bradley

Unit No: Walter

Interval: 4590.00 ft (KB) To 4626.00 ft (KB) (TVD)

Reference Elevations: 3004.00 ft (KB)

Total Depth: 4052.00 ft (KB) (TVD)

2999.00 ft (CF)

Hole Diameter: 7.88 inches Hole Condition: Good

KB to GR/CF: 5.00 ft

Serial #: 8522 Inside

Press @ Run Depth: 39.33 psig @ 4591.00 ft (KB)

Capacity: 8000.00 psig

Start Date: 2012.03.21

End Date:

2012.03.21

Last Calib.: 2012.03.21

Start Time: 12:35:05

End Time:

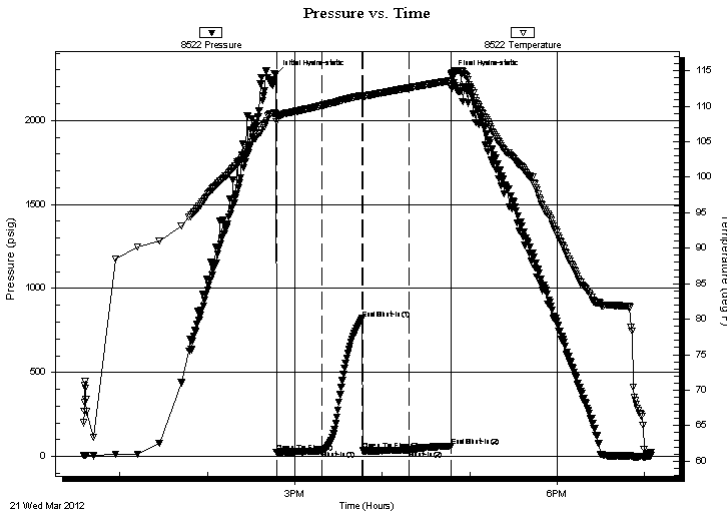
19:04:29

Time On Btm: 2012.03.21 @ 14:47:00

Time Off Btm: 2012.03.21 @ 16:47:00

TEST COMMENT: IF: Surface blow .
IS: No return.
FF: Surface blow .
FS: No return.

PRESSURE SUMMARY



Time (Min.)	Pressure (psig)	Temp (deg F)	Annotation
0	2273.46	109.00	Initial Hydro-static
1	27.07	107.84	Open To Flow (1)
32	35.34	110.12	Shut-In(1)
59	820.01	111.55	End Shut-In(1)
60	34.40	111.34	Open To Flow (2)
91	39.33	112.60	Shut-In(2)
120	61.14	113.60	End Shut-In(2)
120	2270.94	114.61	Final Hydro-static

Recovery

Length (ft)	Description	Volume (bbl)
15.00	ocm 10o 90m	0.07
3.00	oil 100o	0.01

* Recovery from multiple tests

Gas Rates

	Choke (inches)	Pressure (psig)	Gas Rate (Mcf/d)



**TRILOBITE
TESTING, INC.**

DRILL STEM TEST REPORT

FLUID SUMMARY

Grand Mesa Operating Co.

4 16s 32w Scott, Ks

1700 N. Waterfront Pkw y
Bldg 600
Wichita, Ks 67206
ATTN: John Goldsmith

Hoeme 1-4

Job Ticket: 44522

DST#: 6

Test Start: 2012.03.21 @ 12:35:00

Mud and Cushion Information

Mud Type: Gel Chem

Mud Weight: 9.00 lb/gal

Viscosity: 58.00 sec/qt

Water Loss: 7.20 in³

Resistivity: ohm.m

Salinity: 3500.00 ppm

Filter Cake: 1.00 inches

Cushion Type:

Cushion Length: ft

Cushion Volume: bbl

Gas Cushion Type:

Gas Cushion Pressure: psig

Oil API:

0 deg API

Water Salinity: 0 ppm

Recovery Information

Recovery Table

Length ft	Description	Volume bbl
15.00	ocm 10o 90m	0.074
3.00	oil 100o	0.015

Total Length: 18.00 ft Total Volume: 0.089 bbl

Num Fluid Samples: 0

Num Gas Bombs: 0

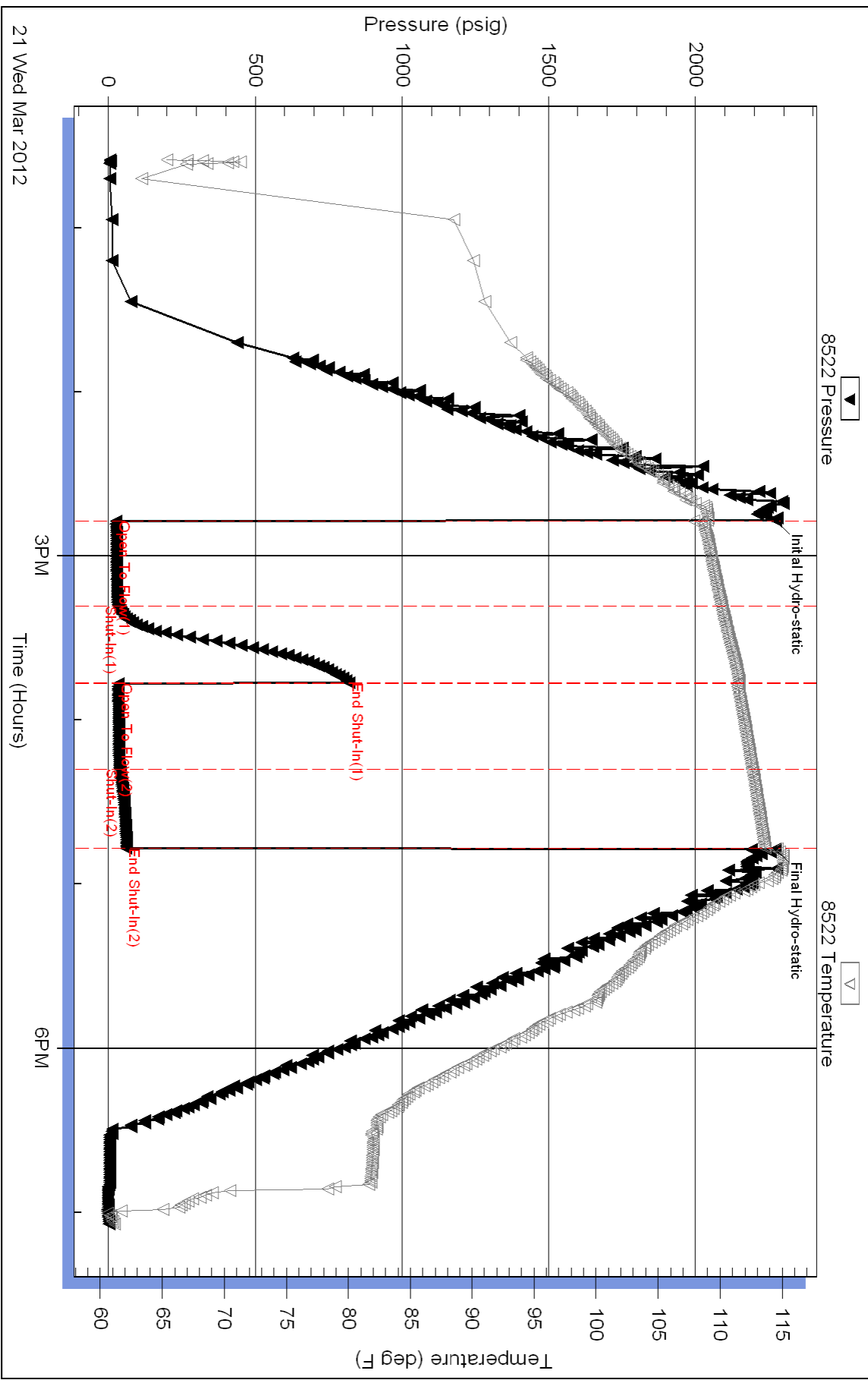
Serial #:

Laboratory Name:

Laboratory Location:

Recovery Comments:

Pressure vs. Time



21 Wed Mar 2012