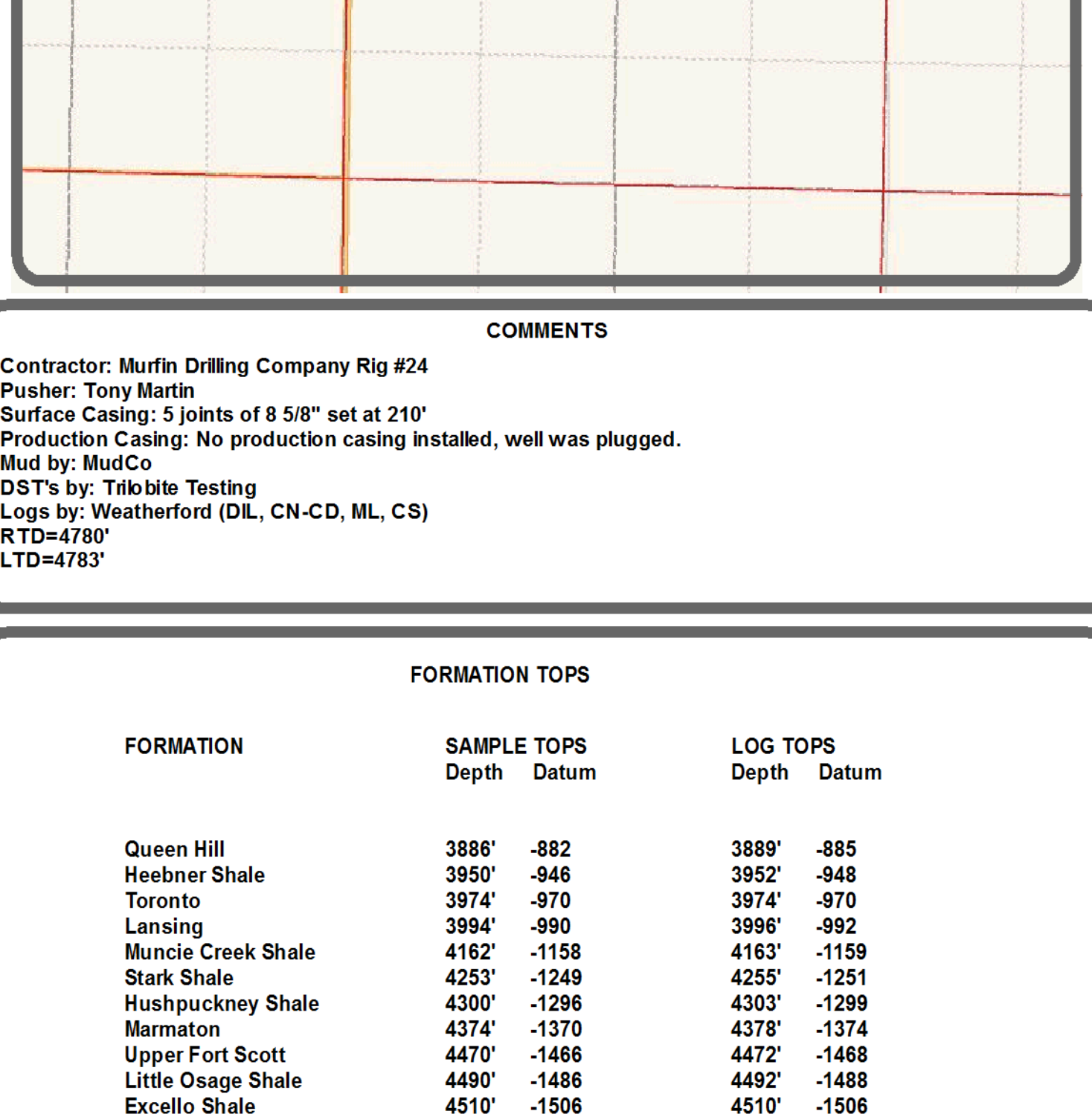


Scale 1:240 (5"=100') Imperial Measured Depth Log

Well Name: #1-4 Hoeme
 Location: 2650' FSL, 1413' FWL, SECTION 04-16S-32W, SW SW SE NW
 License Number: API: 15-171-20863 Region: Scott County
 Production Casing: 5 Joints of 8 5/8" set at 210' Drilling Completed: 03/23/2012
 Spud Date: 03/12/2012
 Surface Coordinates: LAT 38.6928771 LONG -100.8663270
 Bottom Hole Vertical hole
 Coordinates: RTD
 Ground Elevation (ft): 2999' K.B. Elevation (ft): 3004'
 Logged Interval (ft): 3650' To: RTD Total Depth (ft): 4780'
 Formation: Mississippi at RTD
 Type of Drilling Fluid: Chemical
 Printed by MUD.LOG from WellSight Systems 1-800-447-1534 www.WellSight.com

GEOLOGIST

Name: John Goldsmith
 Company: John Goldsmith WellSite Service
 Address: 322 Greenwood Ct. Cheney, KS 67025 316-640-0236

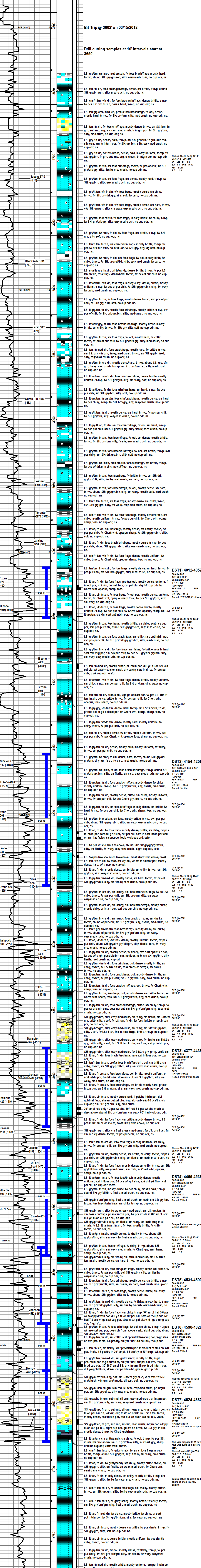


COMMENTS

Contractor: Murfin Drilling Company Rig #24
 Pusher: Tony Martin
 Surface Casing: 5 Joints of 8 5/8" set at 210'
 Production Casing: No production casing installed, well was plugged.
 Mud by: MudCo
 DST's by: Trilobite Testing
 Logs by: Weatherford (DL, CN-CD, ML, CS)
 RTD=4780'
 LTD=4783'

FORMATION TOPS

FORMATION	SAMPLE TOPS Depth Datum	LOG TOPS Depth Datum
Queen Hill	3886' -882	3889' -885
Heebner Shale	3950' -946	3952' -948
Toronto	3974' -970	3974' -970
Lansing	3994' -990	3996' -992
Muncie Creek Shale	4162' -1158	4163' -1159
Stark Shale	4233' -1249	4255' -1251
Hushpuckney Shale	4300' -1296	4303' -1299
Marmaton	4374' -1370	4378' -1374
Upper Fort Scott	4470' -1466	4472' -1468
Little Osage Shale	4490' -1486	4492' -1488
Excelsior Shale	4510' -1506	4510' -1506
Johnson Zone	4582' -1578	4584' -1580
Morrow	4626' -1622	4626' -1622
Mississippi	4668' -1664	4671' -1667
RTD	4780' -1776	4783' -1779



RTD 4780' -1776
 LTD 4783' -1779