



## DRILL STEM TEST REPORT

Prepared For: **Black Tea Oil, LLC**

1011 Centennial BLVD, STE B  
Hays Ks, 67601

ATTN: Chris Leiker

**Krebs L #1**

**20/14s/32w**

Start Date: 2013.12.10 @ 02:55:00

End Date: 2013.12.10 @ 09:34:30

Job Ticket #: 18610                      DST #: 1

Superior Testers Enterprises LLC  
PO Box 138 Great Bend KS 67530  
1-800-792-6902

Printed: 2013.12.10 @ 09:57:34



# DRILL STEM TEST REPORT

Black Tea Oil, LLC

20/14s/32w

1011 Centennial BLVD, STE B  
Hays Ks, 67601

Krebs L #1

Job Ticket: 18610

DST#: 1

ATTN: Chris Leiker

Test Start: 2013.12.10 @ 02:55:00

## GENERAL INFORMATION:

Formation: **KC D & E**

Deviated: No Whipstock: ft (KB)

Time Tool Opened: 05:11:30

Time Test Ended: 09:34:30

Test Type: Conventional Bottom Hole (Initial)

Tester: Shane Konzem

Unit No: 3330/50/Scott City

Interval: **3776.00 ft (KB) To 3818.00 ft (KB) (TVD)**

Reference Elevations: 2760.00 ft (KB)

Total Depth: 3818.00 ft (KB) (TVD)

2754.00 ft (CF)

Hole Diameter: 7.88 inches Hole Condition: Poor

KB to GR/CF: 6.00 ft

Serial #: **6663**

Inside

Press @ RunDepth: 74.30 psia @ 3814.00 ft (KB)

Capacity: 5000.00 psia

Start Date: 2013.12.10

End Date:

2013.12.10

Last Calib.:

2013.12.10

Start Time: 02:55:00

End Time:

09:34:30

Time On Btm:

2013.12.10 @ 05:09:00

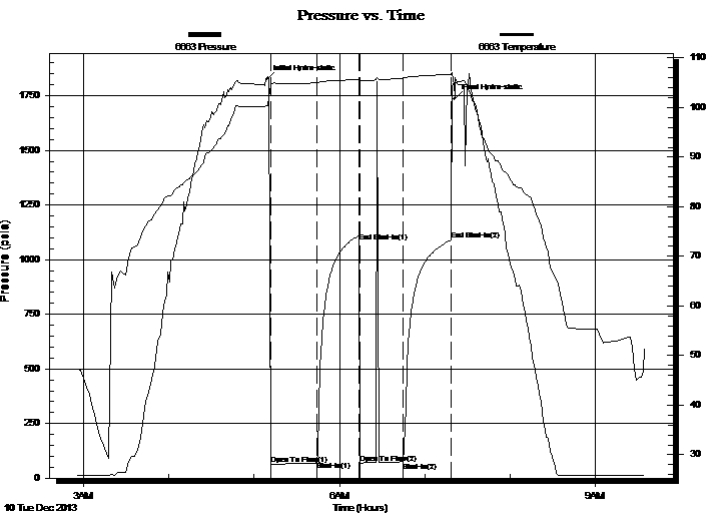
Time Off Btm:

2013.12.10 @ 07:21:00

TEST COMMENT: 1st Open/ 30 Minutes. Weak surface blow thjat died after 3 minutes and 30 seconds.

1st Shut In/ 30 Minutes. No blow back.

2nd Open/ 30 Minutes. Weak surface blow that died after 2 minutes. Flushed tool had flush bubbles and gained a weak surface blow that died in 30 seconds.



## PRESSURE SUMMARY

Time (Min.)	Pressure (psia)	Temp (deg F)	Annotation
0	1824.42	100.49	Initial Hydro-static
3	63.93	104.45	Open To Flow (1)
35	77.21	104.97	Shut-In(1)
65	1081.50	105.67	End Shut-In(1)
66	69.83	105.41	Open To Flow (2)
96	74.30	105.89	Shut-In(2)
130	1089.65	106.69	End Shut-In(2)
132	1736.46	104.46	Final Hydro-static

## Recovery

Length (ft)	Description	Volume (bbl)
40.00	100% mud.	0.28

## Gas Rates

Choke (inches)	Pressure (psia)	Gas Rate (Mcf/d)





# DRILL STEM TEST REPORT

**TOOL DIAGRAM**

Black Tea Oil, LLC

**20/14s/32w**

1011 Centennial BLVD, STE B  
Hays Ks, 67601

**Krebs L #1**

Job Ticket: 18610

**DST#: 1**

ATTN: Chris Leiker

Test Start: 2013.12.10 @ 02:55:00

## Tool Information

Drill Pipe:	Length: 3745.00 ft	Diameter: 3.80 inches	Volume: 52.53 bbl	Tool Weight: 2000.00 lb
Heavy Wt. Pipe:	Length: 0.00 ft	Diameter: 0.00 inches	Volume: 0.00 bbl	Weight set on Packer: 25000.00 lb
Drill Collar:	Length: 30.40 ft	Diameter: 2.25 inches	Volume: 0.15 bbl	Weight to Pull Loose: 82000.00 lb
			<u>Total Volume: 52.68 bbl</u>	Tool Chased 2.00 ft
Drill Pipe Above KB:	28.40 ft			String Weight: Initial 60000.00 lb
Depth to Top Packer:	3776.00 ft			Final 60000.00 lb
Depth to Bottom Packer:	ft			
Interval between Packers:	42.00 ft			
Tool Length:	71.00 ft			
Number of Packers:	2	Diameter: 6.75 inches		

Tool Comments:

Tool Description	Length (ft)	Serial No.	Position	Depth (ft)	Accum. Lengths
------------------	-------------	------------	----------	------------	----------------

Change Over Sub	1.00			3748.00	
Shut-In Tool	5.00			3753.00	
Hydroic Tool	5.00			3758.00	
Jars	6.00			3764.00	
Safety Joint	2.00			3766.00	
Packer	5.00			3771.00	29.00 Bottom Of Top Packer
Packer	5.00			3776.00	
Perforations	37.00			3813.00	
Recorder	1.00	6663	Inside	3814.00	
Recorder	1.00	6651	Outside	3815.00	
Bullnose	3.00			3818.00	42.00 Bottom Packers & Anchor

**Total Tool Length: 71.00**



# DRILL STEM TEST REPORT

## FLUID SUMMARY

Black Tea Oil, LLC

**20/14s/32w**

1011 Centennial BLVD, STE B  
Hays Ks, 67601

**Krebs L #1**

Job Ticket: 18610

**DST#: 1**

ATTN: Chris Leiker

Test Start: 2013.12.10 @ 02:55:00

### Mud and Cushion Information

Mud Type: Gel Chem

Cushion Type:

Oil API:

deg API

Mud Weight: 9.00 lb/gal

Cushion Length:

ft

Water Salinity:

ppm

Viscosity: 50.00 sec/qt

Cushion Volume:

bbbl

Water Loss: 8.00 in<sup>3</sup>

Gas Cushion Type:

Resistivity: ohm.m

Gas Cushion Pressure:

psia

Salinity: 4000.00 ppm

Filter Cake: 1.00 inches

### Recovery Information

Recovery Table

Length ft	Description	Volume bbl
40.00	100% mud.	0.284

Total Length: 40.00 ft      Total Volume: 0.284 bbl

Num Fluid Samples: 0

Num Gas Bombs: 0

Serial #:

Laboratory Name:

Laboratory Location:

Recovery Comments:

Serial #: 6663

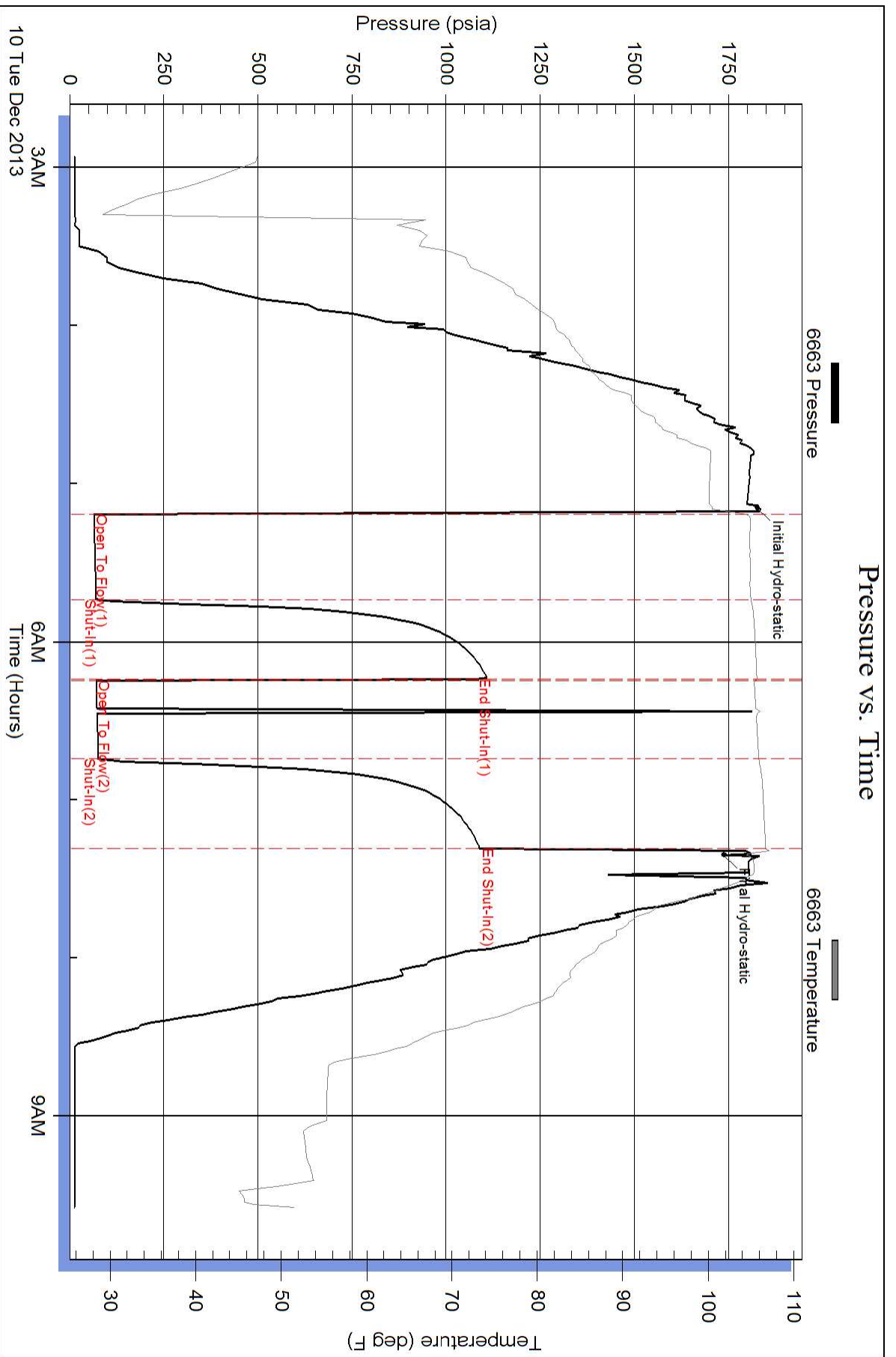
Inside

Black Tea Oil, LLC

Krebs L#1

DST Test Number: 1

### Pressure vs. Time



Superior Testers Enterprises LLC

Ref. No: 18610

Printed: 2013.12.10 @ 09:57:35

