



DRILL STEM TEST REPORT

Prepared For: **Black Tea Oil L.L.C**

1011 Centennial Blvd Ste B Hays KS 67601

ATTN: Kevin Bailey

Krebs M #1

27-14-32 Logan

Start Date: 2013.12.18 @ 05:15:00

End Date: 2013.12.18 @ 10:02:30

Job Ticket #: 17032 DST #: 1

Superior Testers Enterprises LLC
PO Box 138 Great Bend KS 67530
1-800-792-6902

Printed: 2013.12.18 @ 10:21:31



DRILL STEM TEST REPORT

Black Tea Oil L.L.C

27-14-32 Logan

1011 Centennial Blvd Ste B Hays KS 67601

Krebs M #1

Job Ticket: 17032

DST#: 1

ATTN: Kevin Bailey

Test Start: 2013.12.18 @ 05:15:00

GENERAL INFORMATION:

Formation: **Lansing B**

Deviated: No Whipstock: ft (KB)

Time Tool Opened: 07:25:00

Time Test Ended: 10:02:30

Test Type: Conventional Bottom Hole (Initial)

Tester: Jared Scheck

Unit No: 3320-Scott City-

Interval: 3758.00 ft (KB) To 3800.00 ft (KB) (TVD)

Reference Elevations: 2708.00 ft (KB)

Total Depth: 3800.00 ft (KB) (TVD)

2699.00 ft (CF)

Hole Diameter: 7.88 inches Hole Condition: Fair

KB to GR/CF: 9.00 ft

Serial #: 8400 Inside

Press@RunDepth: 59.05 psia @ 3796.00 ft (KB)

Capacity: 5000.00 psia

Start Date: 2013.12.18

End Date: 2013.12.18

Last Calib.: 2013.12.18

Start Time: 05:15:00

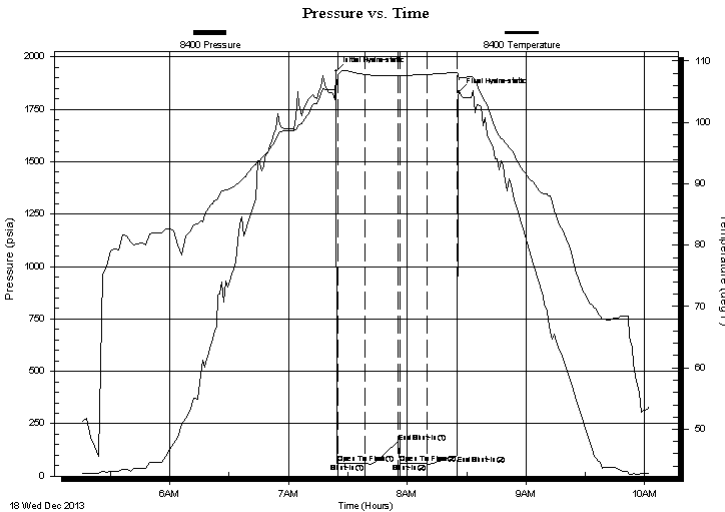
End Time: 10:02:30

Time On Btm: 2013.12.18 @ 07:24:00

Time Off Btm: 2013.12.18 @ 08:26:00

TEST COMMENT: 1st Opening 15 Minutes-Weak blow built 1/2 inch into water died off
 1st Shut-in 15 Minutes-No blow back
 2nd Opening 15 Minutes-Weak surface blow did not build
 2nd Shut-in 15 Minutes-No blow back

PRESSURE SUMMARY



Time (Min.)	Pressure (psia)	Temp (deg F)	Annotation
0	1931.65	105.74	Initial Hydro-static
1	61.24	107.63	Open To Flow (1)
15	59.13	107.80	Shut-In(1)
32	161.98	107.66	End Shut-In(1)
33	59.20	107.63	Open To Flow (2)
46	59.05	107.83	Shut-In(2)
61	98.05	108.14	End Shut-In(2)
62	1831.91	107.02	Final Hydro-static

Recovery

Gas Rates

Length (ft)	Description	Volume (bbl)
5.00	mud	0.02

Choke (inches)	Pressure (psia)	Gas Rate (Mcf/d)



DRILL STEM TEST REPORT

Black Tea Oil L.L.C

27-14-32 Logan

1011 Centennial Blvd Ste B Hays KS 67601

Krebs M #1

Job Ticket: 17032

DST#: 1

ATTN: Kevin Bailey

Test Start: 2013.12.18 @ 05:15:00

GENERAL INFORMATION:

Formation: **Lansing B**

Deviated: No Whipstock: ft (KB)

Time Tool Opened: 07:25:00

Time Test Ended: 10:02:30

Test Type: Conventional Bottom Hole (Initial)

Tester: Jared Scheck

Unit No: 3320-Scott City-

Interval: 3758.00 ft (KB) To 3800.00 ft (KB) (TVD)

Reference Elevations: 2708.00 ft (KB)

Total Depth: 3800.00 ft (KB) (TVD)

2699.00 ft (CF)

Hole Diameter: 7.88 inches Hole Condition: Fair

KB to GR/CF: 9.00 ft

Serial #: 6731

Press@RunDepth: 98.48 psia @ ft (KB)

Capacity: 5000.00 psia

Start Date: 2013.12.18

End Date: 2013.12.18

Last Calib.: 2013.12.18

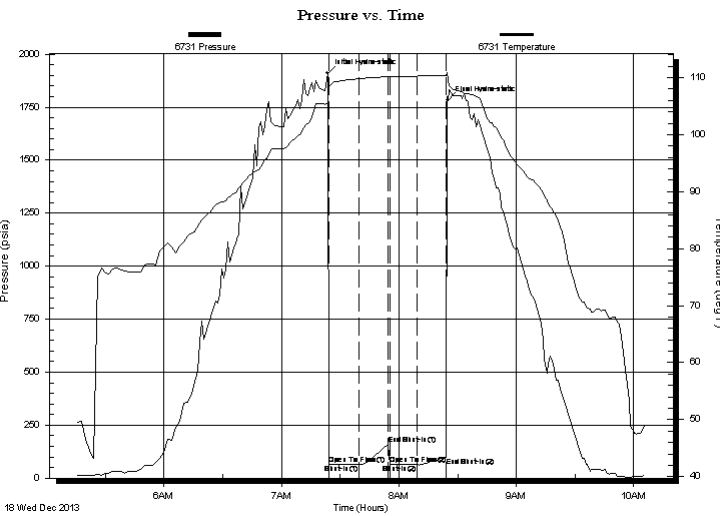
Start Time: 05:15:00

End Time: 10:06:00

Time On Btm: 2013.12.18 @ 07:23:30

Time Off Btm: 2013.12.18 @ 08:25:00

TEST COMMENT: 1st Opening 15 Minutes-Weak blow built 1/2 inch into water died off
 1st Shut-in 15 Minutes-No blow back
 2nd Opening 15 Minutes-Weak surface blow did not build
 2nd Shut-in 15 Minutes-No blow back



PRESSURE SUMMARY

Time (Min.)	Pressure (psia)	Temp (deg F)	Annotation
0	1909.87	105.61	Initial Hydro-static
1	67.36	108.36	Open To Flow (1)
16	65.35	109.80	Shut-In(1)
31	160.62	110.17	End Shut-In(1)
32	65.50	110.15	Open To Flow (2)
46	64.45	110.27	Shut-In(2)
61	98.48	110.38	End Shut-In(2)
62	1783.23	109.67	Final Hydro-static

Recovery

Length (ft)	Description	Volume (bbl)
5.00	mud	0.02

Gas Rates

Choke (inches)	Pressure (psia)	Gas Rate (Mcf/d)



DRILL STEM TEST REPORT

TOOL DIAGRAM

Black Tea Oil L.L.C

27-14-32 Logan

1011 Centennial Blvd Ste B Hays KS 67601

Krebs M #1

Job Ticket: 17032

DST#: 1

ATTN: Kevin Bailey

Test Start: 2013.12.18 @ 05:15:00

Tool Information

Drill Pipe:	Length: 3652.00 ft	Diameter: 3.80 inches	Volume: 51.23 bbl	Tool Weight: 1000.00 lb
Heavy Wt. Pipe:	Length: 0.00 ft	Diameter: 0.00 inches	Volume: 0.00 bbl	Weight set on Packer: 20000.00 lb
Drill Collar:	Length: 90.00 ft	Diameter: 2.25 inches	Volume: 0.44 bbl	Weight to Pull Loose: 60000.00 lb
			<u>Total Volume: 51.67 bbl</u>	Tool Chased 4.00 ft
Drill Pipe Above KB:	12.00 ft			String Weight: Initial 35000.00 lb
Depth to Top Packer:	3758.00 ft			Final 35000.00 lb
Depth to Bottom Packer:	ft			
Interval between Packers:	42.00 ft			
Tool Length:	70.00 ft			
Number of Packers:	2	Diameter: 6.75 inches		

Tool Comments:

Tool Description	Length (ft)	Serial No.	Position	Depth (ft)	Accum. Lengths
------------------	-------------	------------	----------	------------	----------------

Shut-In Tool	5.00			3735.00	
Hydraulic Tool	5.00			3740.00	
Jars	6.00			3746.00	
Safety Joint	2.00			3748.00	
Packer	5.00			3753.00	28.00 Bottom Of Top Packer
Packer	5.00			3758.00	
Anchor	37.00			3795.00	
Recorder	1.00	8400	Inside	3796.00	
Recorder	1.00		Outside	3797.00	
Bullnose	3.00			3800.00	42.00 Bottom Packers & Anchor
Total Tool Length:	70.00				



DRILL STEM TEST REPORT

FLUID SUMMARY

Black Tea Oil L.L.C

27-14-32 Logan

1011 Centennial Blvd Ste B Hays KS 67601

Krebs M #1

Job Ticket: 17032

DST#: 1

ATTN: Kevin Bailey

Test Start: 2013.12.18 @ 05:15:00

Mud and Cushion Information

Mud Type: Gel Chem

Mud Weight: 8.00 lb/gal

Viscosity: 46.00 sec/qt

Water Loss: 8.80 in³

Resistivity: ohm.m

Salinity: 2000.00 ppm

Filter Cake: 1.00 inches

Cushion Type:

Cushion Length: ft

Cushion Volume: bbl

Gas Cushion Type:

Gas Cushion Pressure: psia

Oil API:

Water Salinity: ppm

deg API

Recovery Information

Recovery Table

Length ft	Description	Volume bbl
5.00	mud	0.025

Total Length: 5.00 ft Total Volume: 0.025 bbl

Num Fluid Samples: 0

Num Gas Bombs: 0

Serial #:

Laboratory Name:

Laboratory Location:

Recovery Comments:

Serial #: 8400

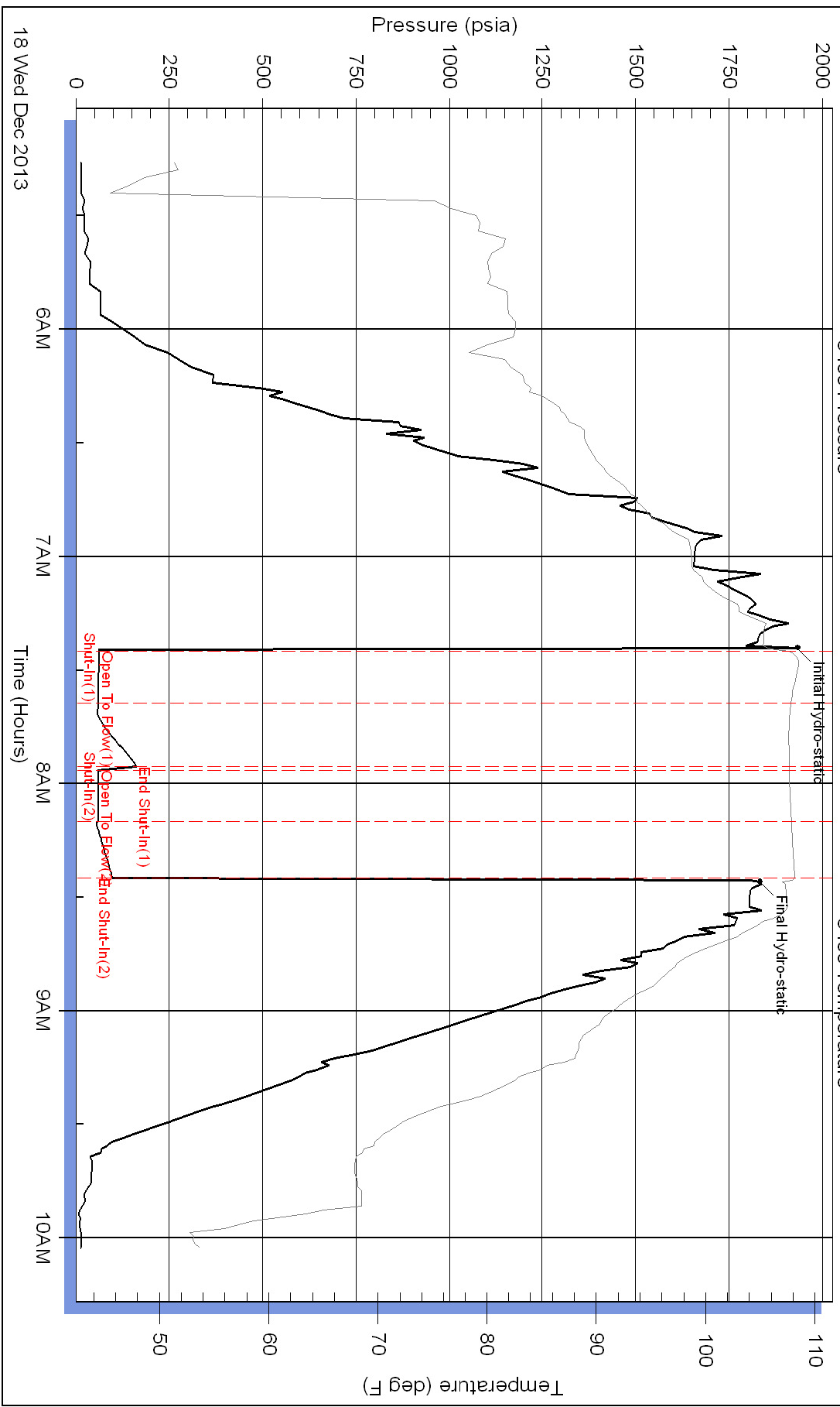
Inside

Black Tea Oil L.L.C

Krebs M#1

DST Test Number: 1

Pressure vs. Time



Superior Testers Enterprises LLC

Ref. No: 17032

Printed: 2013.12.18 @ 10:21:31

