

**Thomas J. Funk**  
**Petroleum Geologist**  
 Eudora, Kansas

**Geologists' Report**  
**Drilling Time and Sample Log**

**OPERATOR** Murfin Drilling Co., Inc  
**WELL NO** #1-6  
**ELEVATION** KB 3022  
**FIELD** Wildcat API 15-109-21096  
**LOCATION** 700' FSL & 900' FEL  
**SEC.** 6 **TWP.** 13S **RGE.** 32W  
**COUNTY** Logan **STATE** Kansas

**CONTRACTOR** Murfin Drilling Co. Rig #25  
**DATE** 1/22/2012  
**LOG TO** 5048  
**LOG FROM** 3700  
**TO TD**  
**DRILLING TIME KEPT FROM** 3:00  
**TO TD**  
**SAMPLES EXAMINED FROM** 3:00  
**TO TD**  
**GEOLOGICAL SUPERVISION FROM** 3:00  
**TO TD**  
**MUD UP** 3300  
**TYPE MUD** Chemical

**FORMATION** TOP DATUM SAMPLE STRUC  
 LOG TECH DIL MEL  
**ANYDITE** 2524 (+489) 2509 (+513) -19  
**B/anydite** 2547 (+475) 2533 (+489) -20  
**Topeka** 3750 (-728) 3755 (-723) -3  
**Hebbner Sh** 3874 (-952) 3880 (-958) -1  
**Lansing** 4017 (-995) 4019 (-997) -1  
**Minors Creek** 4174 (-1152) 4179 (-1157) -16  
**Stark Sh** 4254 (-1228) 4258 (-1228) -11  
**Parman** 4322 (-1340) 4327 (-1341) -6  
**Palmer Sh** 4424 (-1432) 4431 (-1423) -6  
**Carver Sh** 4531 (-1561) 4534 (-1523) -4  
**Missouri** 4650 (-1828) 4655 (-1833) -8  
**Massipian**

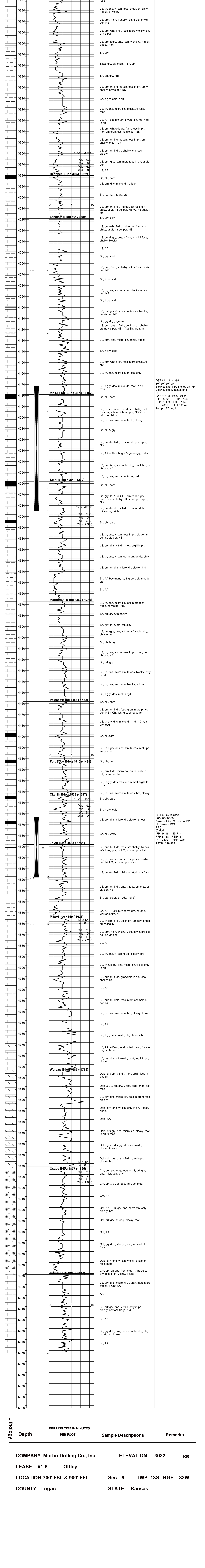
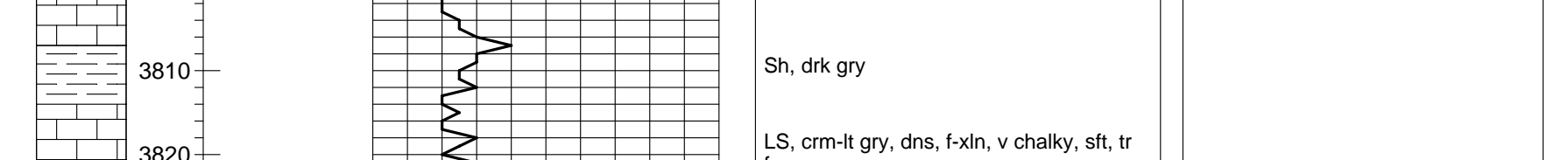
**CASING RECORD**  
**SURFACE** 8 5/8" at 217KB w/170x  
**PRODUCTION**  
**5 1/2" at 3545KB w/420x**

Daily Progress	Date	Depth	NO Size	Make	Type	Depth Out	Feet	Hours
	1/3/12	Spud	1	12 1/4"	HTC	RR	217	3
	1/4/12			217" WOC				
	1/5/12		2	7 7/8"	Smith	M616	3700	3483
	1/6/12		3	7 7/8"	HTC	GX 228	5050	1380
	1/7/12							71
	1/8/12							
	1/9/12							
	1/10/12							
	1/11/12							
	1/12/12							

**Remarks And Recommendations:**  
 Based upon log analysis, DST recovery, and sample examination, it was recommended that the #1-6 (Otley) be abandoned as a dry hole. 5 1/2 inch casing was run for completion as a salt water disposal well.

Thomas Funk  
 Petroleum Geologist

**LEGEND**



**COMPANY** Murfin Drilling Co., Inc **ELEVATION** 3022 **KB**  
**LEASE** #1-6 **Ottley**  
**LOCATION** 700' FSL & 900' FEL **Sec** 6 **TWP** 13S **RGE** 32W  
**COUNTY** Logan **STATE** Kansas

**REFERENCE WELL FOR STRUCTURAL COMPARISON:** Murfin Drilling Co. #1-5 Vanava  
 2310' FSL & 1800' FEL sec. 5-13S-32W, Logan Co., KS