

OPERATOR

Company:

MIKE KELSO OIL, INC.

Address:

PO BOX 467

CHASE, KS 67524-0467

Contact Geologist:

MIKE KELSO

Contact Phone Nbr:

620-938-2943

Well Name:

SMITH # 6

Location:

N2 SE NW SW S7 T18S R13W

Pool:

State:

KANSAS

API:

15-009-25964-00-00

Field:

BOYD

Country:

USA

Scale 1:240 Imperial

Well Name:

SMITH # 6

Surface Location:

N2 SE NW SW S7 T18S R13W

Bottom Location:

API:

15-009-25964-00-00

License Number:

31528

Spud Date:

4/12/2014

Time:

3:00 AM

Region:

BARTON COUNTY

Drilling Completed:

4/20/2014

Time:

12:00 AM

Surface Coordinates:

1660 FSL & 990 FWL

Bottom Hole Coordinates:

Ground Elevation:

1856.00ft

K.B. Elevation:

1863.00ft

Logged Interval:

2600.00ft

To:

3397.00ft

Total Depth:

3400.00ft

Formation:

ARBUCKLE

Drilling Fluid Type:

CHEMICAL/FRESH WATER GEL

SURFACE CO-ORDINATES

Well Type:

Vertical

Longitude:

-98.8078444

Latitude:

38.4970306

N/S Co-ord:

1660 FSL

E/W Co-ord:

990 FWL

LOGGED BY



Company:

SOLUTIONS CONSULTING, INC.

Address:

108 W 35TH

HAYS, KS 67601

Phone Nbr:

(785) 639-1337

Logged By:

GEOLOGIST

Name:

STEVE REED / HERB DEINES

CONTRACTOR

Contractor:

SKYTOP DRILLING

Rig #:

1

Rig Type:

MUD ROTARY

Spud Date:

4/12/2014

Time:

3:00 AM

TD Date:

4/20/2014

Time:

12:00 AM

Rig Release:

4/21/2014

Time:

10:00 AM

ELEVATIONS

K.B. Elevation:

1863.00ft

Ground Elevation:

1856.00ft

K.B. to Ground:

7.00ft

NOTES

BASED ON FAVORABLE SHOWS IN THE ARBUCKLE AND EXCELLENT STRUCTURAL POSITION, THE DECISION WAS MADE TO SET 5 1/2" PRODUCTION CASING TO FURTHER TEST ZONES OF INTEREST.

OPEN HOLE LOGGING WAS PERFORMED BY PIONEER ENERGY SERVICES: DUAL INDUCTION LG, DUAL COMPENSATED POROSITY LOG, AND MICRORESISTIVITY LOG

DRILL STEM TESTING WAS PERFORMED BY SUPERIOR TESTERS: ONE (1) CONVENTIONAL DRILL STEM TEST

FORMATION TOPS COMPARISON AND DAILY ACTIVITY SUMMARY

	WELL NAME		COMPARISON WELL	COMPARISON WELL
	SMITH #6		SMITH #1	SMITH #4
	API: 15-009-25964		API: 15-009-22556	API: 15-009-24774
FORMATION	SAMPLE TOPS	LOG TOPS	LOG TOPS (DATUM)	LOG TOPS (DATUM)
TOPEKA	2743' (-880')	2738' (-875')	-884'	-886'
HEEBNER	2824' (-1049')	3021' (-1158')	-1167'	-1166'
BROWN LIME	3104' (-1241')	3100' (-1237')	-1246'	-1245'
LKC	3114' (-1251')	3110' (-1247')	-1256'	-1255'
BKC	3327' (-1464')	3254' (-1479')	-1471'	-1469'
ARBUCKLE	3332' (-1469')	3330' (-1467')	-1477'	-1475'
RTD	3400' (-1537')	3397' (-1534')	-1536'	-1492'

SUMMARY OF DAILY ACTIVITY

4-12-14

R.U., spud @ 3:00am

4-13-14

130', drilling, bit trip (12 ¼"), survey 1/4°

4-14-14

812', drilling, 8 5/8" surface casing set at 820' w/100 sxs common, 2% gel, 3% cc, and 250 sxs 65/35 poz, 6% gel, 3% cc, WOC

4-15-14

932', drilling

- 4-16-14

1850', drilling
- 4-17-14

2390', drilling, replace vibrating hose
- 4-18-14

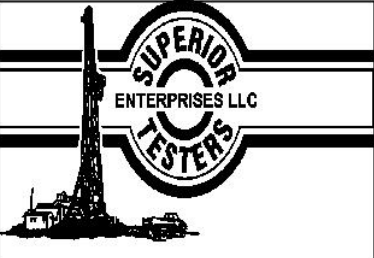
2850', drilling
- 4-19-14

3297', drilling, CFS@3335', CFS @ 3340', CFS @ 3345', short trip, CTCH 1Hr, TOWB, survey 1¼°, DST #1 3327' to 3345', TIWB, CFS @ 3350', CFS @ 3355', drill to TD of 3400' @ 6:08am, CTCH
- 4-20-14

tripping out for logging, log attempt failed (bridge in Waubunsee Group), TIWB to ream and condition hole, mix mud to increase viscosity, TOWB, logging, prepare to set 5 ½" production casing.
- 4-21-14

set production casing, WOC, release rig

DST #1 SUMMARY



DRILL STEM TEST REPORT

Mike Kelso Oil Incorporated

7/18S/13W/Barton

PO Box 467

Chase, Kansas

67524+0467

ATTN: Steve Reed

Smith #6

Job Ticket: 18223

DST#: 1

Test Start: 2014.04.19 @ 18:12:00

GENERAL INFORMATION:

Formation: Arbuckle

Deviated: No Whipstock: ft (KB)

Time Tool Opened: 20:09:30

Time Test Ended: 23:09:30

Test Type: Conventional Bottom Hole (Initial)

Tester: Ken Swinney

Unit No: 3325 Great Bend/24

Interval: 3327.00 ft (KB) To 3345.00 ft (KB) (TVD)

Reference Elevations: 1863.00 ft (KB)

Total Depth: 3345.00 ft (KB) (TVD)

1856.00 ft (CF)

Hole Diameter: 7.80 inchesHole Condition: Fair

KB to GR/CF: 7.00 ft

Serial #: 6749

Inside

Press@RunDepth: 42.78 psig @ 3341.00 ft (KB)

Capacity: 5000.00 psig

Start Date: 2014.04.19

End Date: 2014.04.19

Last Calib.: 2014.04.19

Start Time: 18:12:00

End Time: 23:09:30

Time On Btm: 2014.04.19 @ 20:09:00

Time Off Btm: 2014.04.19 @ 21:19:00

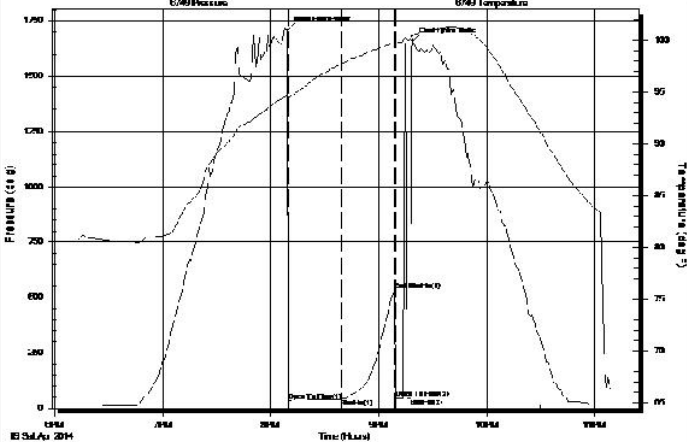
TEST COMMENT:

1ST Open 30 Minutes/Weak blow /Blow built to 1/2 inch

1ST Shut In 30 Minutes/No blow back

2ND Open 10 Minutes/Dead no blow /Flush tool no help/Pull test

Pressure vs. Time



PRESSURE SUMMARY

Time (Min.)	Pressure (psig)	Temp (deg F)	Annotation
0	1710.99	94.73	Initial Hydro-static
1	34.53	94.44	Open To Flow (1)
30	42.78	97.72	Shut-In(1)
60	536.69	99.80	End Shut-In(1)
61	44.28	99.72	Open To Flow (2)
69	47.12	100.09	Shut-In(2)
70	1660.17	100.50	Final Hydro-static

Recovery

Length (ft)	Description	Volume (bbl)
30.00	Lighty Oil cut Mud/Oil 5% Mud 95%	0.15

Gas Rates

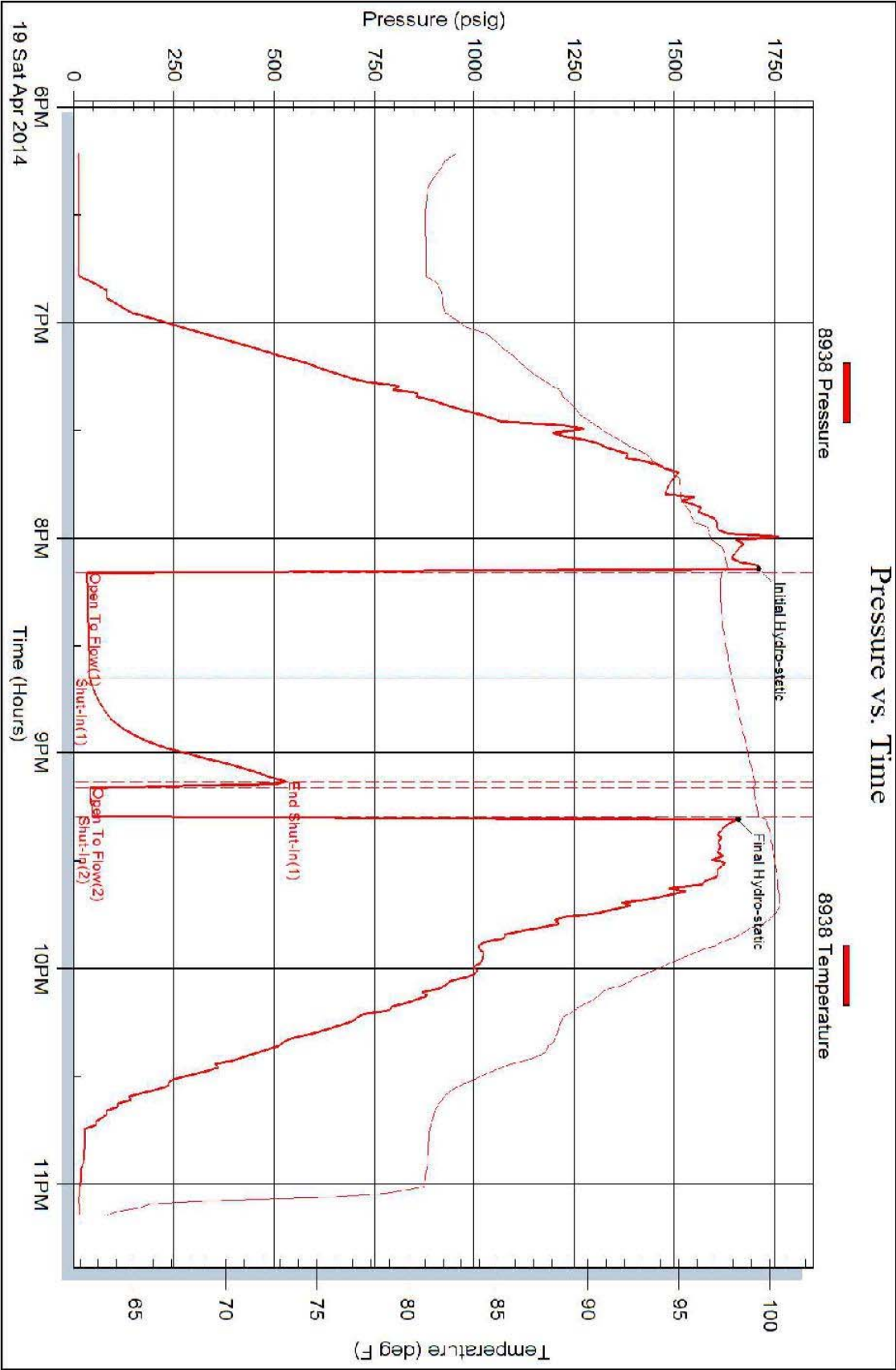
	Choke (inches)	Pressure (psig)	Gas Rate (Mcf/d)

Superior Testers Enterprises LLC

Ref. No: 18223

Printed: 2014.04.19 @ 23:23:47

DST #1 PRESSURE VS TIME CHART



Superior Testers Enterprises LLC

Ref. No: 18223

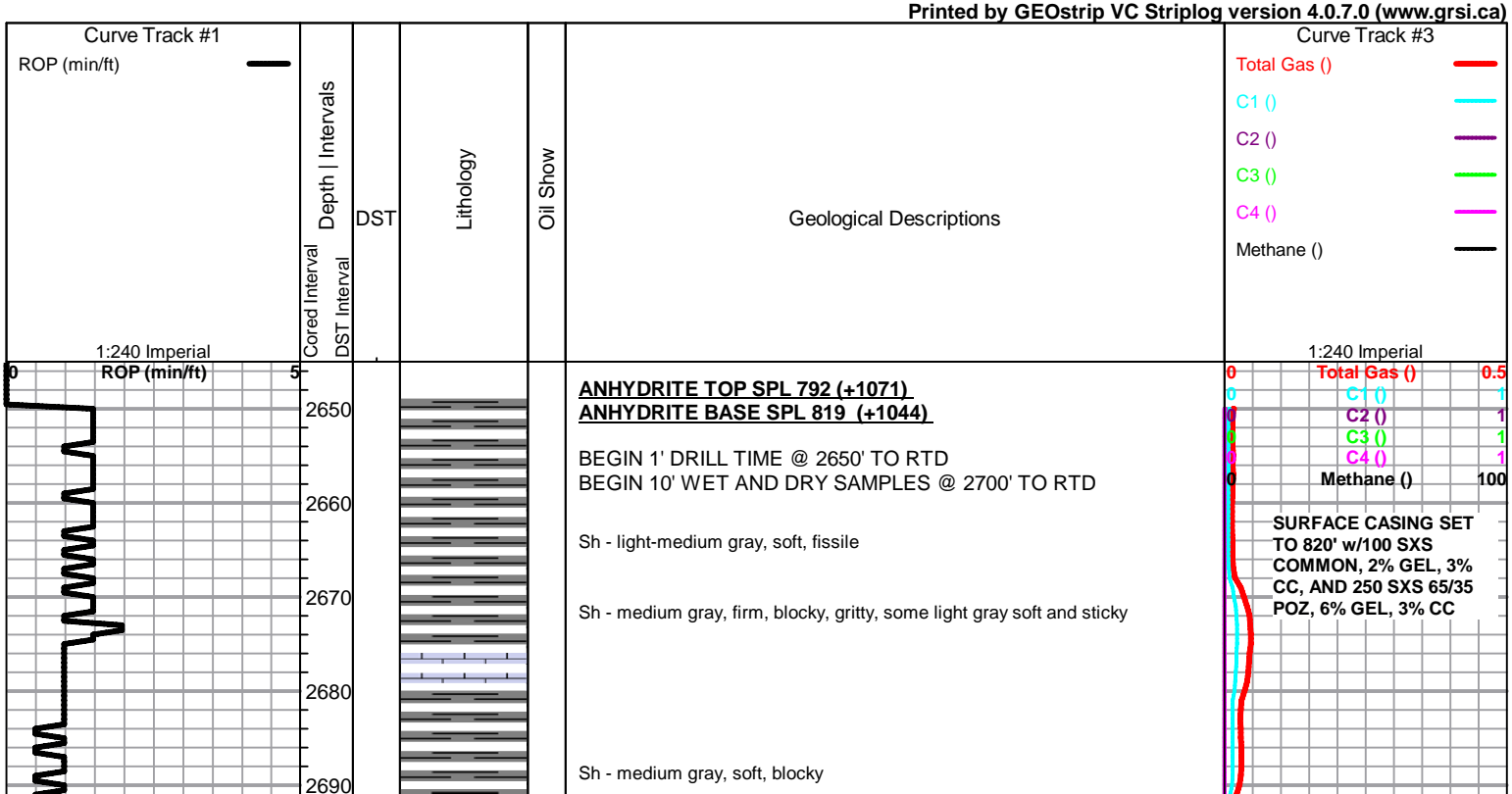
Printed: 2014.04.19 @ 23:23:47

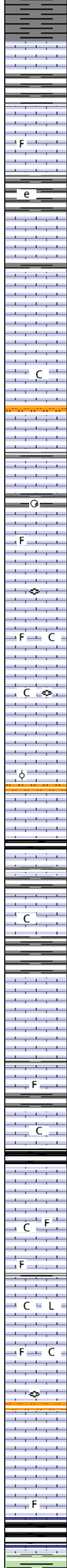
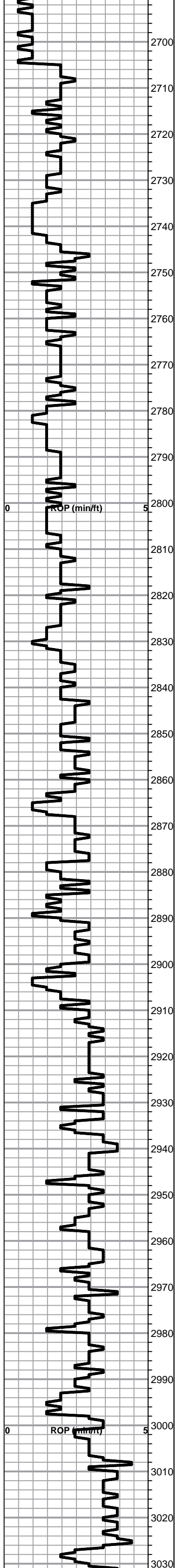
ROCK TYPES

Dolprim	Lmst fw<7	shale, grn	Carbon Sh	Sltst
Dol Lime	Lmst fw7>	shale, gry	shale, red	

ACCESSORIES

MINERAL ▲ Chert, dark P Pyrite △ Chert White	FOSSIL F Fossils < 20% G Gastropod O Oolite Fussilinid	TEXTURE C Chalky e Earthy L Lithogr
--	---	---





Lm - light-medium gray, fnxln, dense, hard

Sh - medium gray, firm, fissile

Lm - tan, fnxln, slightly fossiliferous, dense, hard

Sh - medium gray, soft, fissile, earthy

TOPEKA SPL 2743 (-880) ELOG 2738 (-875)

Lm - light-medium brown, fnxln, dense, very hard

Lm - tan-light brown, fnxln, hard, brittle

Lm - A/A, slightly chalky

Lm - tan-cream, fnxln, mottled, brittle, bedded chalk in part

Sh - light gray, soft, blocky, gastropod fossile

Lm - light-medium gray, fnxln, hard, brittle, slightly fossiliferous

Lm - tan-light brown, fn-medxln, brittle, fusilinids

Lm - tan, granular, friable, slightly fossiliferous, chalky in part

Lm - light brown, fnxln, dense, hard, slightly chalky, fusulinids

Lm - light gray-tan, fnxln, brittle

Lm - light-medium gray, oolitic, poorly developed, well cemented, brittle

Lm - tan, fine interxln porosity, dense, hard

Sh - black, carbonaceous, waxy

Sh - light gray, soft, very sticky clumps

Lm - cream, fnxln, brittle, bedded chalk in part, white sticky chalk clumps forming white wash

Sh - light-medium gray, soft, sticky

Lm - cream-light brown, vfxln, dense, hard, pyrite, bedded chalk

Lm - tan-light brown, fnxln, slightly fossiliferous, brittle

Lm - light-medium brown, fn-medxln, brittle, chalk in part

Sh - black, carbonaceous, waxy

Lm - medium brown, fnxln, fossiliferous, brittle, slightly chalky

Lm - cream, fossiliferous, fine interxln porosity, brittle

Lm - cream-tan, fnxln, some lithographic, brittle, chalky in part

Lm - tan, fnxln, brittle, slightly fossiliferous, chalk in part

Lm - tan, medxln, friable, NSFO, no odor, fusilinids

Lm - tan, granular with fossil clasts, brittle, some gilsonitic stain, no odor, NSFO

Lm - light-medium brown, fossiliferous, fnxln, dense, hard

HEEBNER SPL 3025 (-1162) ELOG 3021 (-1158)

Sh - black, carbonaceous, waxy

Sh - light green, soft, sticky

