

## DRILL STEM TEST REPORT

Prepared For: **Raydon Exploration, Inc.**

1601 NW Expressway  
STE 1300  
Oklahoma City, OK 73118

ATTN: Edwin Grieves

### **Kennedy #1-9**

#### **9-29s-33w Haskell',KS**

Start Date: 2014.01.16 @ 01:05:00

End Date: 2014.01.16 @ 12:41:42

Job Ticket #: 55573          DST #: 1

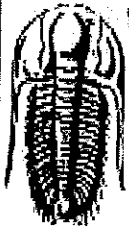
Trilobite Testing, Inc  
PO Box 362 Hays, KS 67601  
ph: 785-625-4778 fax: 785-625-5620

Printed: 2014.01.24 @ 08:47:47

Raydon Exploration, Inc. 9-29s-33w Haskell',KS Kennedy #1-9 DST # 1 Lansing 2014.01.16







**TRILOBITE  
TESTING, INC**

# DRILL STEM TEST REPORT

TOOL DIAGRAM

Raydon Exploration, Inc.

9-29s-33w Haskell', KS

1601 NW Expressway  
STE 1300  
Oklahoma City, OK 73118  
ATTN: Edw in Grieves

Kennedy #1-9

Job Ticket: 55573

DST#: 1

Test Start: 2014.01.16 @ 01:05:00

## Tool Information

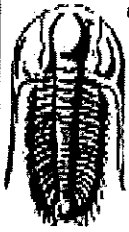
Drill Pipe:	Length: 4191.00 ft	Diameter: 3.80 inches	Volume: 58.79 bbl	Tool Weight: 2300.00 lb
Heavy Wt. Pipe:	Length: 0.00 ft	Diameter: inches	Volume: 0.00 bbl	Weight set on Packer: 22000.00 lb
Drill Collar:	Length: 241.00 ft	Diameter: 2.25 inches	Volume: 1.19 bbl	Weight to Pull Loose: 80000.00 lb
			<u>Total Volume: 59.98 bbl</u>	Tool Chased 0.00 ft
Drill Pipe Above KB:	14.50 ft			String Weight: Initial 60000.00 lb
Depth to Top Packer:	4445.00 ft			Final 67000.00 lb
Depth to Bottom Packer:	ft			
Interval between Packers:	22.00 ft			
Tool Length:	49.50 ft			
Number of Packers:	2	Diameter: 6.75 inches		

Tool Comments:

## Tool Description

Tool Description	Length (ft)	Serial No.	Position	Depth (ft)	Accum. Lengths
Change Over Sub	1.00			4418.50	
Shut In Tool	5.00			4423.50	
Hydraulic tool	5.00			4428.50	
Jars	5.00			4433.50	
Safety Joint	2.50			4436.00	
Packer	5.00			4441.00	27.50 Bottom Of Top Packer
Packer	4.00			4445.00	
Stubb	1.00			4446.00	
Recorder	0.00	8357	Inside	4446.00	
Recorder	0.00	8645	Outside	4446.00	
Perforations	18.00			4464.00	
Bullnose	3.00			4467.00	22.00 Bottom Packers & Anchor

**Total Tool Length: 49.50**



**TRILOBITE  
TESTING, INC.**

## DRILL STEM TEST REPORT

**FLUID SUMMARY**

Raydon Exploration, Inc.

**9-29s-33w Haskell',KS**

1601 NW Expressway  
STE 1300  
Oklahoma City, OK 73118  
ATTN: Edw in Grieves

**Kennedy #1-9**

Job Ticket: 55573

**DST#: 1**

Test Start: 2014.01.16 @ 01:05:00

### Mud and Cushion Information

Mud Type: Gel Chem

Cushion Type:

Oil API: 31 deg API

Mud Weight: 9.00 lb/gal

Cushion Length: ft

Water Salinity: 105000 ppm

Viscosity: 52.00 sec/qt

Cushion Volume: bbl

Water Loss: 9.93 in<sup>3</sup>

Gas Cushion Type:

Resistivity: ohm.m

Gas Cushion Pressure: psig

Salinity: 3000.00 ppm

Filter Cake: 2.00 inches

### Recovery Information

Recovery Table

Length ft	Description	Volume bbl
0.00	72' Weak GIP	0.000
1605.00	OSMW 2m 98w	20.319
434.00	OSMW 50m 50w	6.088
50.00	OSWM 30w 70m	0.701
2.00	GO 10g 90c	0.028

Total Length: 2091.00 ft      Total Volume: 27.136 bbl

Num Fluid Samples: 0

Num Gas Bombs: 0

Serial #:

Laboratory Name:

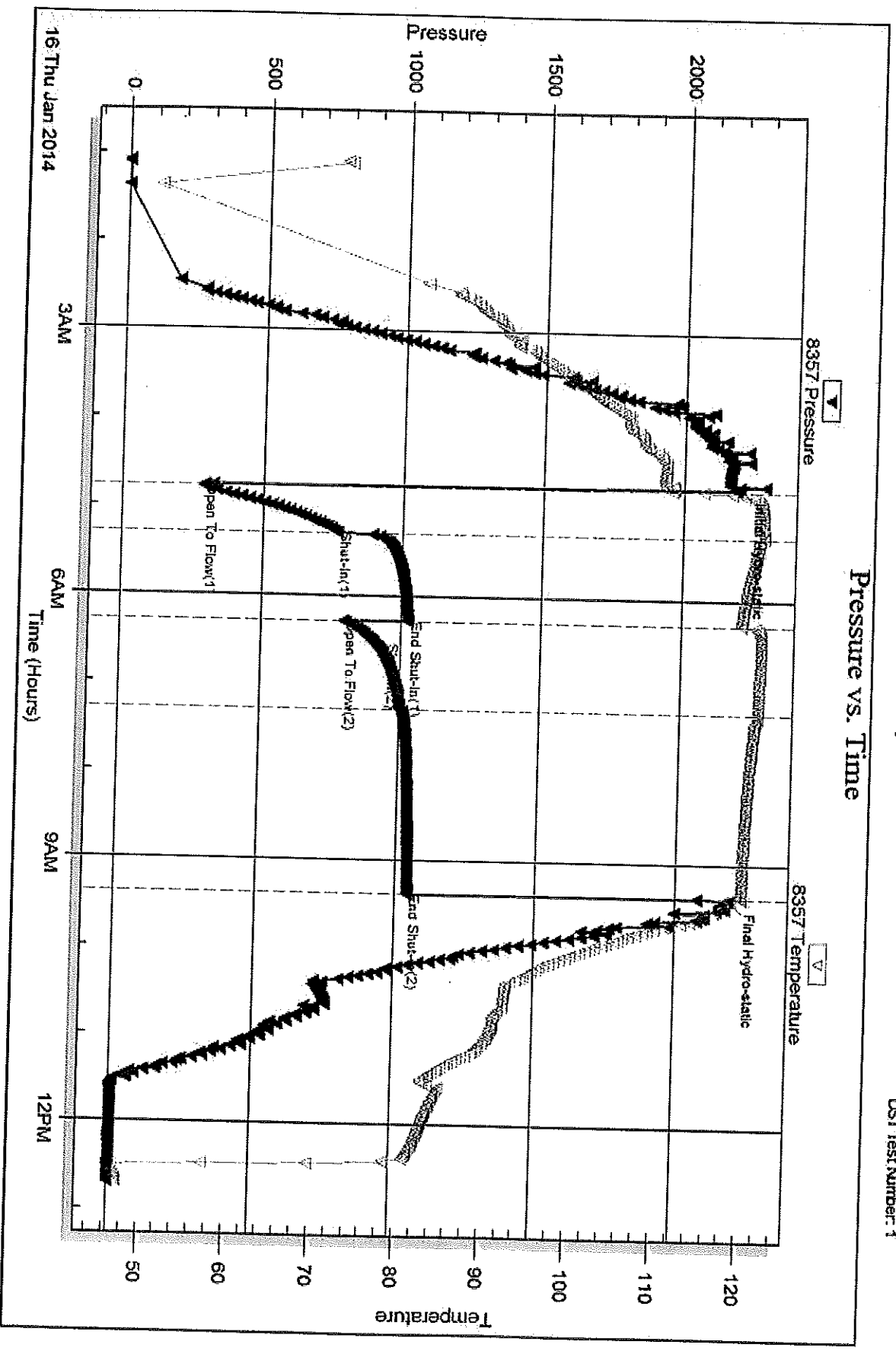
Laboratory Location:

Recovery Comments: API: 31 @ 60 Degrees F = 31 RW: .101 @ 53 Degrees F = 105000 PPM

Serial #: 8357 Inside Raydon Exploration, Inc.

Kennedy #1-9

DST Test Number: 1



Tribble Testing, Inc

Ref. No: 55573

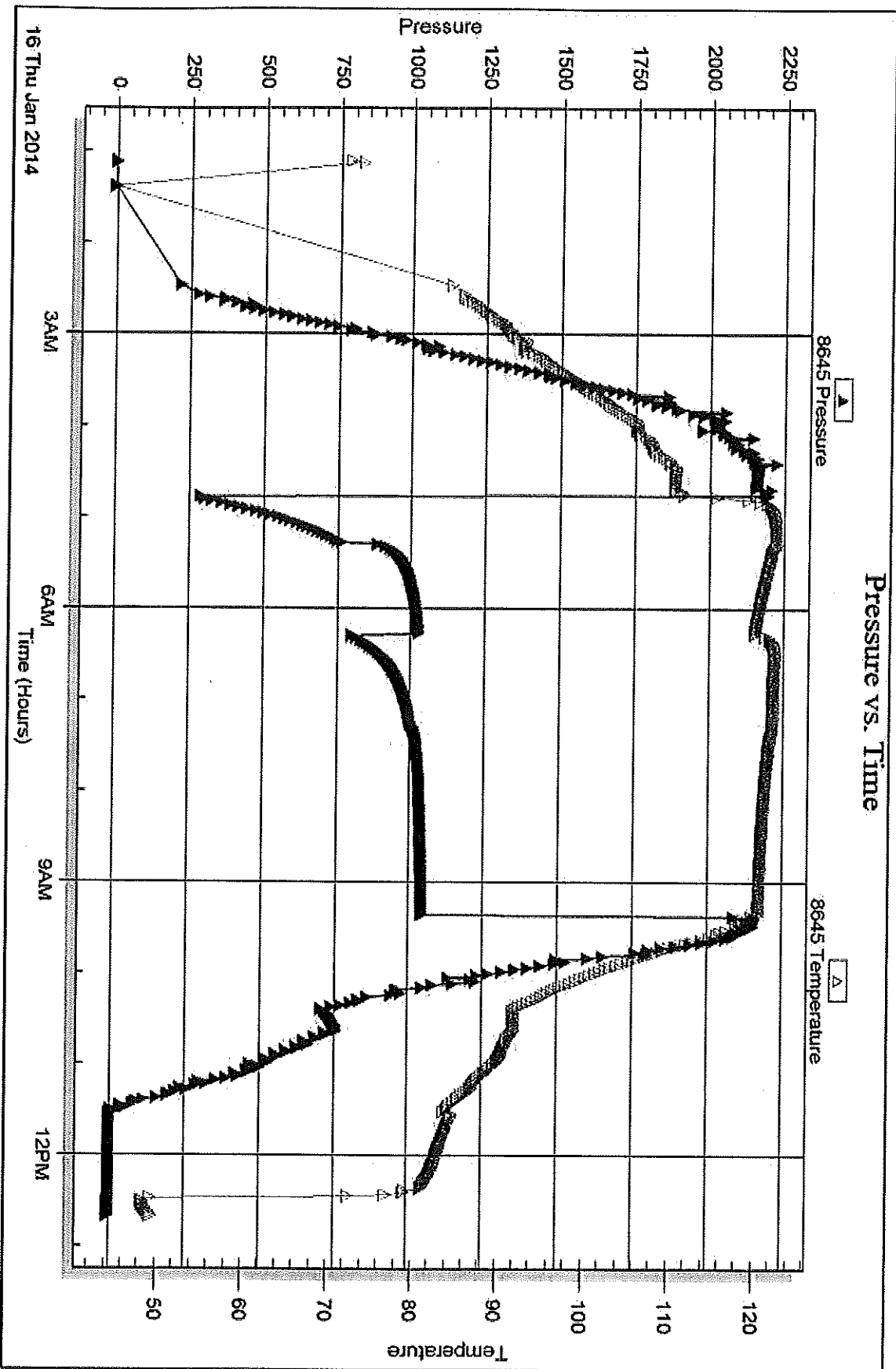
Printed: 2014.01.24 @ 08:47:49

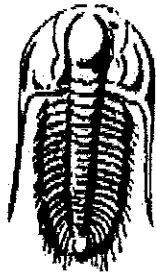
Serial #: 8645

Outside: Raydon Exploration, Inc.

Kennedy #1-9

DST Test Number: 1





**TRILOBITE  
TESTING, INC.**

## DRILL STEM TEST REPORT

Prepared For: **Raydon Exploration, Inc.**

1601 NW Expressway  
STE 1300  
Oklahoma City, OK 73118

ATTN: Edwin Grieves

**Kennedy #1-9**

**9-29s-33w Haskell',KS**

Start Date: 2014.01.20 @ 02:48:00

End Date: 2014.01.20 @ 13:57:10

Job Ticket #: 50243                      DST #: 2

Trilobite Testing, Inc

PO Box 362 Hays, KS 67601

ph: 785-625-4778 fax: 785-625-5620

Printed: 2014.01.24 @ 08:47:18

Raydon Exploration, Inc.  
9-29s-33w Haskell',KS  
Kennedy #1-9  
DST # 2  
Morrow  
2014.01.20





# DRILL STEM TEST REPORT

Raydon Exploration, Inc.

9-29s-33w Haskell, KS

1601 NW Expressway  
STE 1300  
Oklahoma City, OK 73118  
ATTN: Edw in Grieves

Kennedy #1-9

Job Ticket: 50243

DST#: 2

Test Start: 2014.01.20 @ 02:48:00

## GENERAL INFORMATION:

Formation: **Morrow**

Deviated: No Whipstock: ft (KB)

Time Tool Opened: 06:23:55

Time Test Ended: 13:57:10

Test Type: Conventional Bottom Hole (Reset)

Tester: Will MacLean

Unit No: 72

Interval: **5393.00 ft (KB) To 5415.00 ft (KB) (TVD)**

Reference Elevations: 2963.00 ft (KB)

Total Depth: 5415.00 ft (KB) (TVD)

2954.00 ft (CF)

Hole Diameter: 7.88 inches Hole Condition: Good

KB to GR/CF: 9.00 ft

Serial #: 8674

Inside

Press@RunDepth: 24.62 psig @ 5395.00 ft (KB)

Capacity: 8000.00 psig

Start Date: 2014.01.20

End Date: 2014.01.20

Last Calib.: 2014.01.20

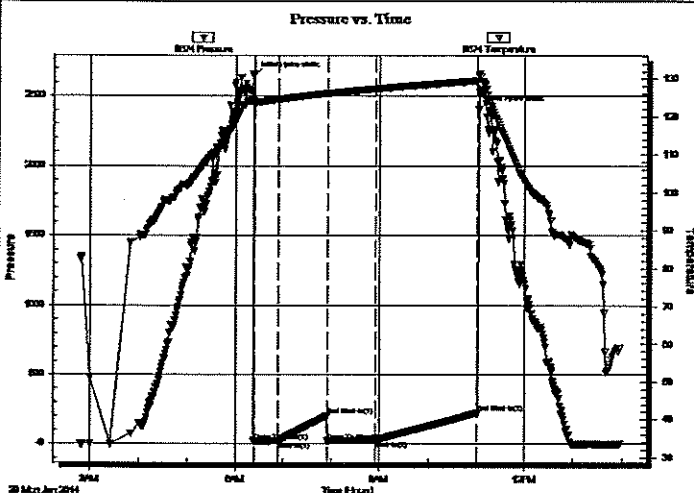
Start Time: 02:48:00

End Time: 13:57:10

Time On Btm: 2014.01.20 @ 06:22:25

Time Off Btm: 2014.01.20 @ 11:02:24

TEST COMMENT: IF- Weak Surface Blow Built to 2"  
IS- No Blow  
FF- Weak Surface Blow Built to 2 1/4"  
FSI- No Blow



## PRESSURE SUMMARY

Time (Min.)	Pressure (psig)	Temp (deg F)	Annotation
0	2646.56	124.78	Initial Hydro-static
2	16.40	124.09	Open To Flow (1)
31	19.97	124.56	Shut-in(1)
93	199.96	126.19	End Shut-in(1)
93	17.80	126.11	Open To Flow (2)
153	24.62	127.36	Shut-in(2)
278	221.93	129.49	End Shut-in(2)
280	2407.48	130.92	Final Hydro-static

## Recovery

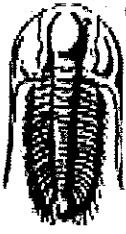
Length (ft)	Description	Volume (bbl)
15.00	OGCM 3%oil 5%g 92%m	0.07
0.00	287' of Weak GIP	0.00

\* Recovery from multiple tests

## Gas Rates

	Choke (inches)	Pressure (psig)	Gas Rate (Mcf/d)





**TRILOBITE  
TESTING, INC.**

## DRILL STEM TEST REPORT

**TOOL DIAGRAM**

Raydon Exploration, Inc.

**9-29s-33w Haskell', KS**

1601 NW Expressway  
STE 1300  
Oklahoma City, OK 73118  
ATTN: Edw in Grieves

**Kennedy #1-9**

Job Ticket: 50243

**DST#: 2**

Test Start: 2014.01.20 @ 02:48:00

### Tool Information

Drill Pipe:	Length: 5130.00 ft	Diameter: 3.80 inches	Volume: 71.96 bbl	Tool Weight: 2000.00 lb
Heavy Wt. Pipe:	Length: 0.00 ft	Diameter: 0.00 inches	Volume: 0.00 bbl	Weight set on Packer: 32000.00 lb
Drill Collar:	Length: 241.00 ft	Diameter: 2.25 inches	Volume: 1.19 bbl	Weight to Pull Loose: 24000.00 lb
			<u>Total Volume: 73.15 bbl</u>	Tool Chased ft
Drill Pipe Above KB:	6.00 ft			String Weight: Initial 70000.00 lb
Depth to Top Packer:	5393.00 ft			Final 70000.00 lb
Depth to Bottom Packer:	ft			
Interval between Packers:	22.00 ft			
Tool Length:	50.00 ft			
Number of Packers:	2	Diameter: 6.75 inches		

Tool Comments:

Tool Description	Length (ft)	Serial No.	Position	Depth (ft)	Accum. Lengths
Change Over Sub	1.00			5366.00	
Shut In Tool	5.00			5371.00	
Hydraulic tool	5.00			5376.00	
Jars	5.00			5381.00	
Safety Joint	2.00			5383.00	
Change Over Sub	1.00			5384.00	
Packer	5.00			5389.00	28.00 Bottom Of Top Packer
Packer	4.00			5393.00	
Stubb	1.00			5394.00	
Perforations	1.00			5395.00	
Recorder	0.00	8355	Outside	5395.00	
Recorder	0.00	8674	Inside	5395.00	
Perforations	15.00			5410.00	
Bullnose	5.00			5415.00	22.00 Bottom Packers & Anchor

**Total Tool Length: 50.00**



**TRILOBITE  
TESTING, INC**

# DRILL STEM TEST REPORT

**FLUID SUMMARY**

Raydon Exploration, Inc.

9-29s-33w Haskell',KS

1601 NW Expressway  
STE 1300  
Oklahoma City, OK 73118  
ATTN: Edw in Grieves

**Kennedy #1-9**

Job Ticket: 50243

**DST#: 2**

Test Start: 2014.01.20 @ 02:48:00

## Mud and Cushion Information

Mud Type: Gel Chem	Cushion Type:	Oil API:	deg API
Mud Weight: 9.00 lb/gal	Cushion Length: ft	Water Salinity:	ppm
Viscosity: 51.00 sec/qt	Cushion Volume: bbl		
Water Loss: 7.95 in <sup>3</sup>	Gas Cushion Type:		
Resistivity: ohm.m	Gas Cushion Pressure: psig		
Salinity: 1000.00 ppm			
Filter Cake: 2.00 inches			

## Recovery Information

Recovery Table

Length ft	Description	Volume bbl
15.00	OGCM 3%oil 5%g 92%m	0.074
0.00	287' of Weak GIP	0.000

Total Length: 15.00 ft      Total Volume: 0.074 bbl

Num Fluid Samples: 0      Num Gas Bombs: 0      Serial #:

Laboratory Name:      Laboratory Location:

Recovery Comments:

Serial #: 8674

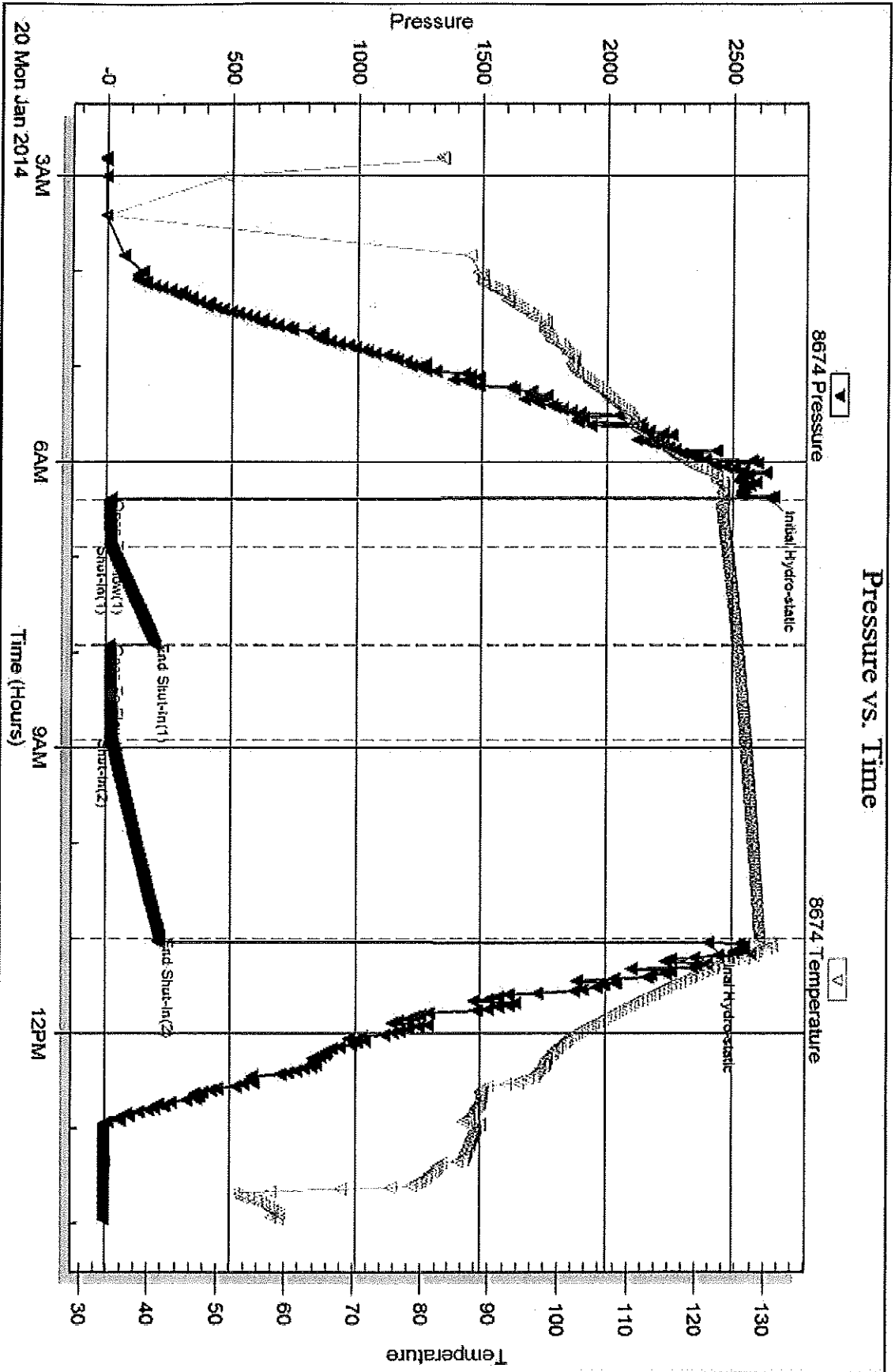
Inside

Raydon Exploration, Inc.

Kennedy #1-9

DST Test Number: 2

### Pressure vs. Time

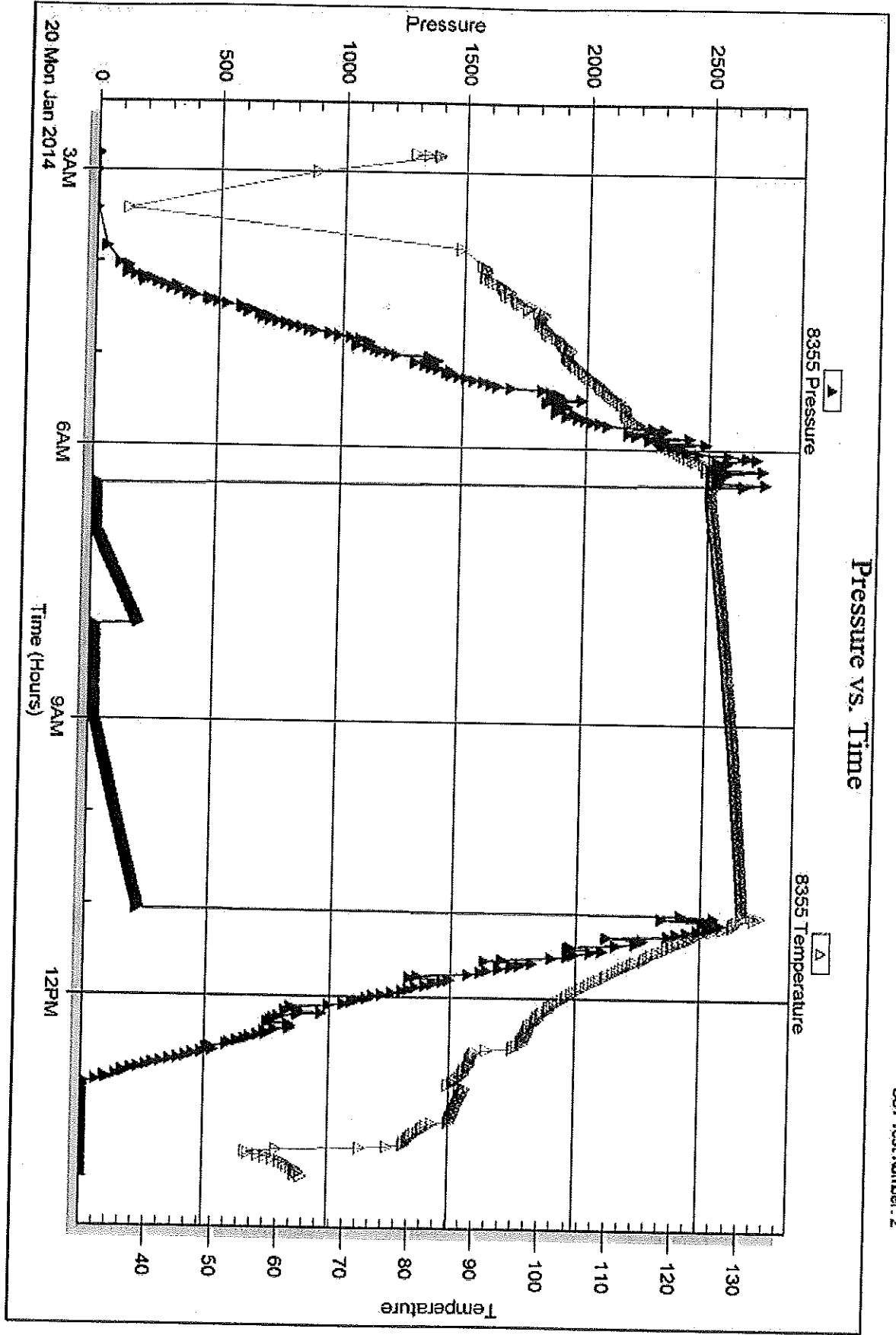


Serial #: 8355

Outside Raydon Exploration, Inc.

Kennedy #1-9

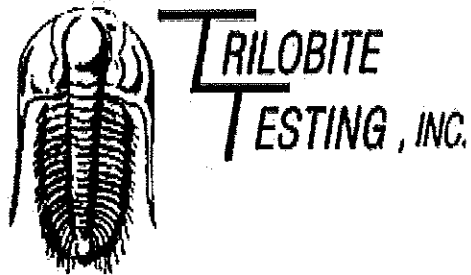
DST Test Number 2



Tribble Testing, Inc

Ref. No: 50243

Printed: 2014.01.24 @ 08:47:20



## DRILL STEM TEST REPORT

Prepared For: **Raydon Exploration, Inc.**

1601 NW Expressway  
STE 1300  
Oklahoma City, OK 73118

ATTN: Edwin Grieves

### **Kennedy #1-9**

#### **9-29s-33w Haskell',KS**

Start Date: 2014.01.21 @ 07:32:00

End Date: 2014.01.21 @ 19:05:25

Job Ticket #: 50244                      DST #: 3

Trilobite Testing, Inc

PO Box 362 Hays, KS 67601

ph: 785-625-4778 fax: 785-625-5620

Raydon Exploration, Inc. 9-29s-33w Haskell',KS Kennedy #1-9 DST # 3 Morrow 2014.01.21



**TRILOBITE  
TESTING, INC**

# DRILL STEM TEST REPORT

Raydon Exploration, Inc.

9-29s-33w Haskell', KS

1601 NW Expressway  
STE 1300  
Oklahoma City, OK 73118  
ATTN: Edwin Grieves

**Kennedy #1-9**

Job Ticket: 50244

DST#: 3

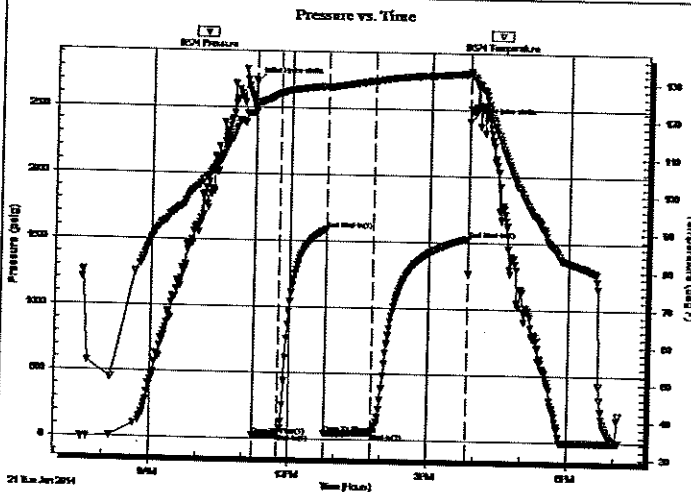
Test Start: 2014.01.21 @ 07:32:00

## GENERAL INFORMATION:

Formation: **Morrow**  
 Deviated: No Whipstock: ft (KB)  
 Time Tool Opened: 11:13:10  
 Time Test Ended: 19:05:25  
 Interval: 5432.00 ft (KB) To 5460.00 ft (KB) (TVD)  
 Total Depth: 5460.00 ft (KB) (TVD)  
 Hole Diameter: 7.88 inches Hole Condition: Good  
 Test Type: Conventional Bottom Hole (Reset)  
 Tester: Will MacLean  
 Unit No: 72  
 Reference Elevations: 2963.00 ft (KB)  
 2954.00 ft (CF)  
 KB to GR/CF: 9.00 ft

Serial #: 8674 Inside  
 Press@RunDepth: 57.31 psig @ 5435.00 ft (KB) Capacity: 8000.00 psig  
 Start Date: 2014.01.21 End Date: 2014.01.21 Last Calib.: 2014.01.21  
 Start Time: 07:32:00 End Time: 19:05:25 Time On Btm: 2014.01.21 @ 11:12:55  
 Time Off Btm: 2014.01.21 @ 15:49:54

TEST COMMENT: IF- Weak Surface 1/4"  
 IS- No Blow  
 FF- Weak Surface Blow in 12 min Built to 1/4"  
 FS- No Blow



## PRESSURE SUMMARY

Time (Min.)	Pressure (psig)	Temp (deg F)	Annotation
0	2692.13	122.77	Initial Hydro-static
1	22.35	121.71	Open To Flow (1)
33	38.35	126.73	Shut-in(1)
94	1589.78	128.78	End Shut-in(1)
94	45.97	128.25	Open To Flow (2)
155	57.31	130.33	Shut-in(2)
277	1530.08	132.52	End Shut-in(2)
277	2411.09	133.15	Final Hydro-static

## Recovery

Length (ft)	Description	Volume (bbl)
65.00	WCM 31%w 69%v a Few Oil Spots	0.32

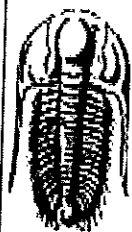
\* Recovery from multiple tests

## Gas Rates

	Choke (inches)	Pressure (psig)	Gas Rate (Mcf/d)







**TRILOBITE  
TESTING, INC**

## DRILL STEM TEST REPORT

**TOOL DIAGRAM**

Raydon Exploration, Inc.

**9-29s-33w Haskell, KS**

1601 NW Expressway  
STE 1300  
Oklahoma City, OK 73118  
ATTN: Edw in Grieves

**Kennedy #1-9**

Job Ticket: 50244

**DST#: 3**

Test Start: 2014.01.21 @ 07:32:00

### Tool Information

Drill Pipe:	Length: 5187.00 ft	Diameter: 3.80 inches	Volume: 72.76 bbl	Tool Weight: 2000.00 lb
Heavy Wt. Pipe:	Length: 0.00 ft	Diameter: inches	Volume: 0.00 bbl	Weight set on Packer: 30000.00 lb
Drill Collar:	Length: 241.00 ft	Diameter: 2.25 inches	Volume: 1.19 bbl	Weight to Pull Loose: 18000.00 lb
		<u>Total Volume:</u>	<u>73.95 bbl</u>	Tool Chased ft
Drill Pipe Above KB:	24.00 ft			String Weight: Initial 68000.00 lb
Depth to Top Packer:	5432.00 ft			Final 68000.00 lb
Depth to Bottom Packer:	ft			
Interval between Packers:	28.00 ft			
Tool Length:	56.00 ft			
Number of Packers:	2	Diameter: 6.75 inches		

Tool Comments:

### Tool Description

Tool Description	Length (ft)	Serial No.	Position	Depth (ft)	Accum. Lengths
Change Over Sub	1.00			5405.00	
Shut In Tool	5.00			5410.00	
Hydraulic tool	5.00			5415.00	
Jars	5.00			5420.00	
Safety Joint	2.00			5422.00	
Change Over Sub	1.00			5423.00	
Packer	5.00			5428.00	28.00 Bottom Of Top Packer
Packer	4.00			5432.00	
Stubb	1.00			5433.00	
Perforations	2.00			5435.00	
Recorder	0.00	8355	Outside	5435.00	
Recorder	0.00	8674	Inside	5435.00	
Perforations	20.00			5455.00	
Bullnose	5.00			5460.00	28.00 Bottom Packers & Anchor
<b>Total Tool Length:</b>	<b>56.00</b>				



**TRILOBITE  
TESTING, INC**

**DRILL STEM TEST REPORT**

**FLUID SUMMARY**

Raydon Exploration, Inc.  
1601 NW Expressway  
STE 1300  
Oklahoma City, OK 73118  
ATTN: Edw in Grieves

9-29s-33w Haskell, KS  
**Kennedy #1-9**  
Job Ticket: 50244      **DST#: 3**  
Test Start: 2014.01.21 @ 07:32:00

**Mud and Cushion Information**

Mud Type: Gel Chem	Cushion Type:	Oil API:	deg API
Mud Weight: 9.00 lb/gal	Cushion Length: ft	Water Salinity:	28000 ppm
Viscosity: 58.00 sec/qt	Cushion Volume: bbl		
Water Loss: 5.98 in <sup>3</sup>	Gas Cushion Type:		
Resistivity: ohm.m	Gas Cushion Pressure: psig		
Salinity: 1300.00 ppm			
Filter Cake: 2.00 inches			

**Recovery Information**

Recovery Table

Length ft	Description	Volume bbl
65.00	WCM 31%w 69%m a Few Oil Spots in Too	0.320

Total Length: 65.00 ft      Total Volume: 0.320 bbl  
 Num Fluid Samples: 0      Num Gas Bombs: 0      Serial #:  
 Laboratory Name:      Laboratory Location:  
 Recovery Comments: RW is .247 @ 72f = 28000

Serial #: 8674

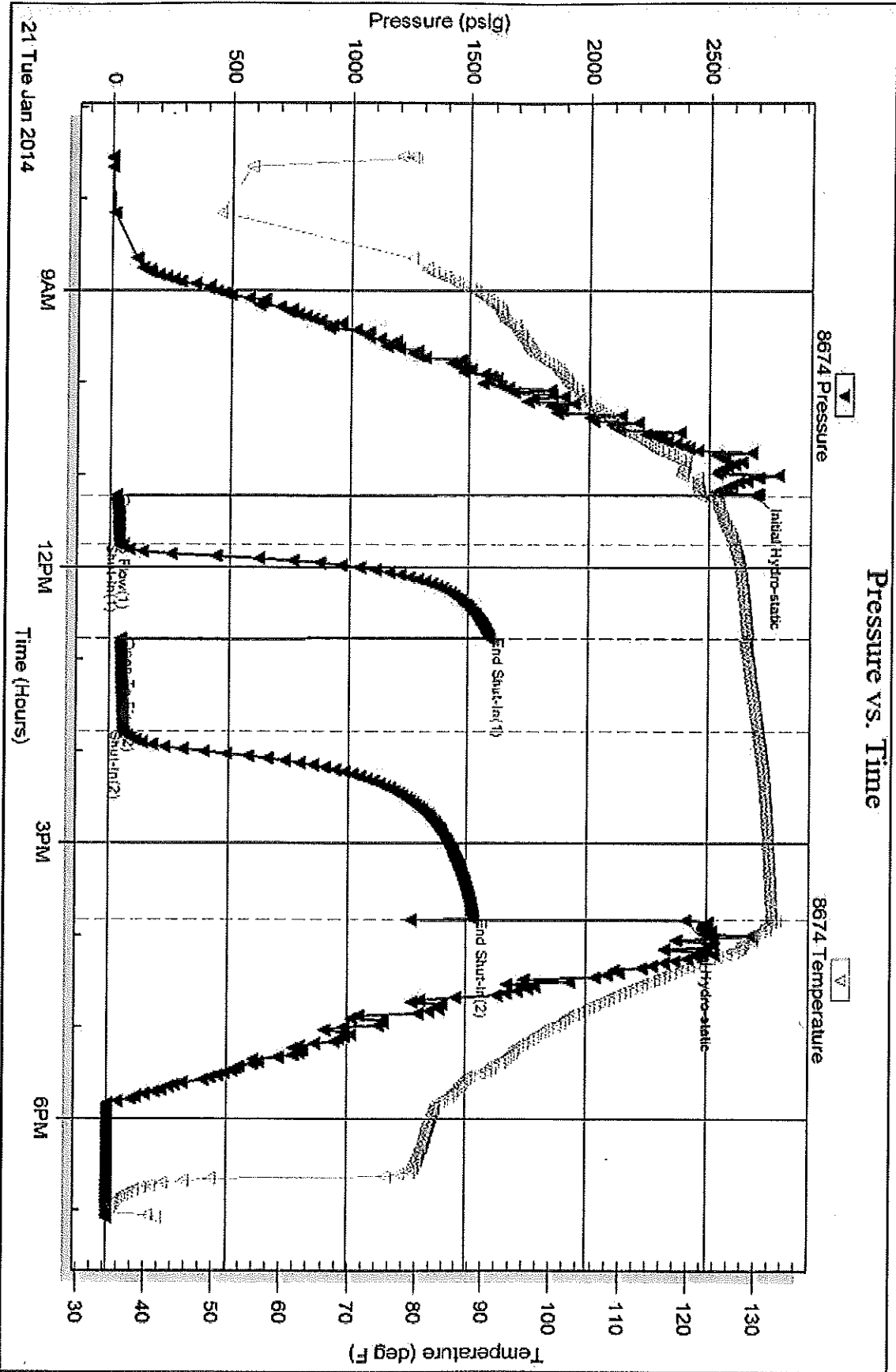
Inside

Raydon Exploration, Inc.

Kennedy #1-9

DST Test Number: 3

### Pressure vs. Time

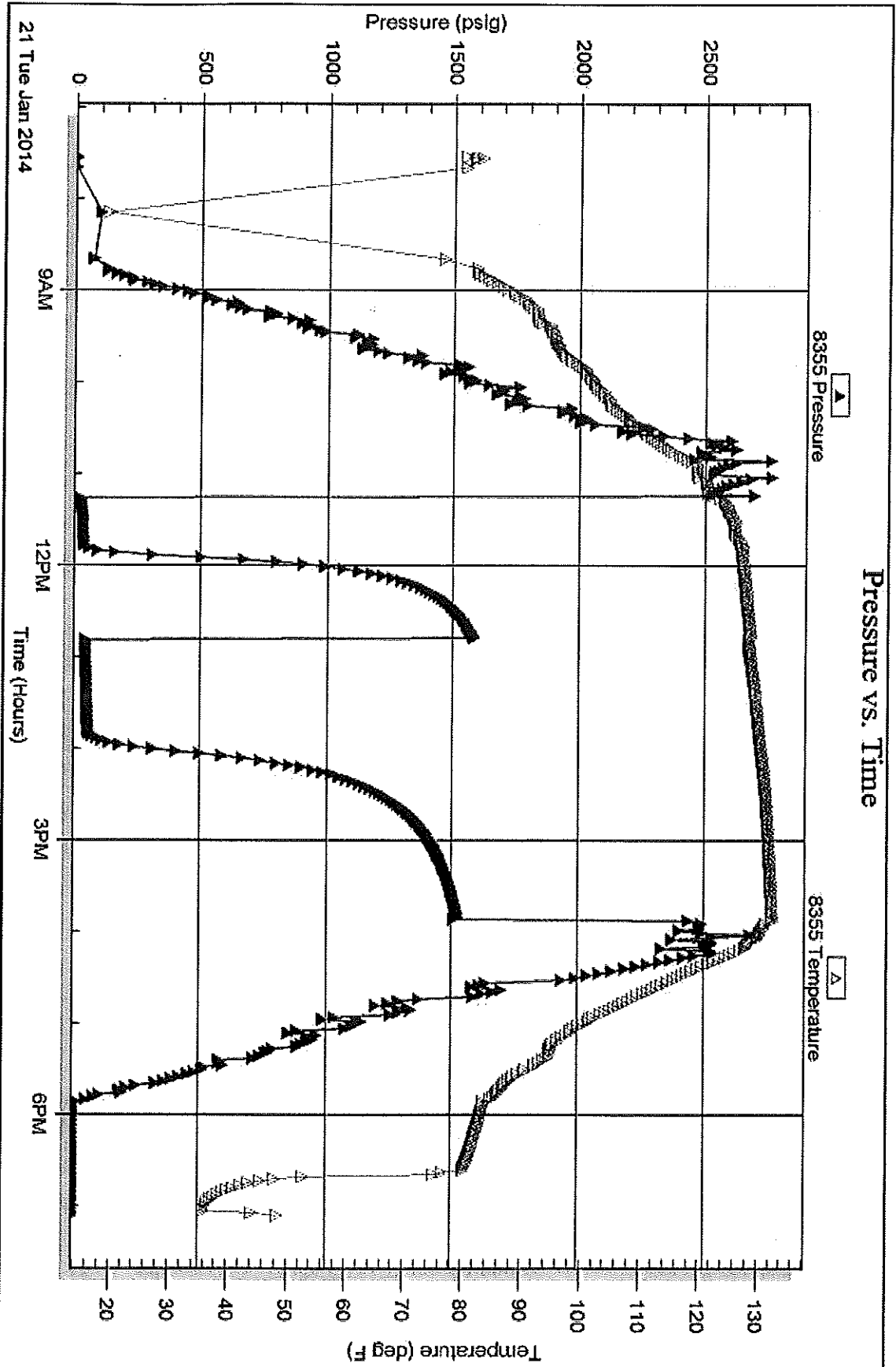


Serial #: 8355

Outside Raydon Exploration, Inc.

Kennedy #1-9

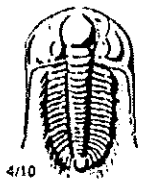
DST Test Number: 3



Triobite Testing, Inc

Ref. No: 50244

Printed: 2014.01.24 @ 08:46:13



# TRILOBITE TESTING INC.

1515 Commerce Parkway • Hays, Kansas 67601

## Test Ticket

NO. 55573

Well Name & No. Kennedy #1-9 Test No. 1 Date 1-16-14  
 Company Raydon Exploration, Inc. Elevation 296.3 KB 2954 GL  
 Address 1601 NW Expressway STE 1300 Oklahoma City, OK 73118  
 Co. Rep / Geo. Edwin Griever Rig Titan 4  
 Location: Sec. 9 Twp. 29s Rge. 33w Co. Haskell State Ks

Interval Tested 4445-4467 Zone Tested Leasing  
 Anchor Length 22 Drill Pipe Run 4191 Mud Wt. 9.2  
 Top Packer Depth 4441 Drill Collars Run 241 Vis .52  
 Bottom Packer Depth 4445 Wt. Pipe Run 0 WL 10.0  
 Total Depth 4467 Chlorides 3000 ppm System LCM 8\*

Blow Description B.O.B. @ 1min  
6" Return  
B.O.B. @ 2 1/2 min  
6" Return

Rec	Feet of	%gas	%oil	%water	%mud
<u>2</u>	<u>60</u>	<u>10</u>	<u>90</u>		
<u>50</u>	<u>OSMW</u>			<u>30</u>	<u>70</u>
<u>434</u>	<u>OSMW</u>			<u>50</u>	<u>50</u>
<u>1605</u>	<u>OSMW</u>			<u>98</u>	<u>2</u>
	<u>72' Weak GIP</u>				

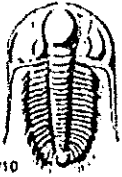
Rec Total 2091 BHT 120 Gravity 31 API RW 101 @ 53 °F Chlorides 105000 ppm

(A) Initial Hydrostatic 2197  Test 1250 T-On Location 00:00  
 (B) First Initial Flow 289  Jars 250 T-Started 1:05  
 (C) First Final Flow 770  Safety Joint 75 T-Open 4:46  
 (D) Initial Shut-In 1027  Circ Sub NIC T-Pulled 9:23  
 (E) Second Initial Flow 798  Hourly Standby \_\_\_\_\_ T-Out 12:42  
 (F) Second Final Flow 1003  Mileage 148RT 229<sup>40</sup> Comments \_\_\_\_\_  
 (G) Final Shut-In 1045  Sampler \_\_\_\_\_  
 (H) Final Hydrostatic 2190  Straddle \_\_\_\_\_  
 Shale Packer 250  Ruined Shale Packer \_\_\_\_\_  
 Extra Packer \_\_\_\_\_  Ruined Packer \_\_\_\_\_  
 Extra Recorder \_\_\_\_\_  Extra Copies \_\_\_\_\_

Initial Open 30  Day Standby \_\_\_\_\_ Sub Total 0  
 Initial Shut-In 60  Accessibility 150 Total 2204.40  
 Final Flow 60 Sub Total 2204.40 MP/DST Disc't \_\_\_\_\_  
 Final Shut-In 120

Approved By Edwin Griever Our Representative Chuck Smith

Trilobite Testing Inc. shall not be liable for damaged or any kind of the property or personnel of the one for whom a test is made, or for any loss suffered or sustained, directly or indirectly, through the use of its equipment, or its statements or opinion concerning the results of any test, tools lost or damaged in the hole shall be paid for at cost by the party for whom the test is made



# TRILOBITE TESTING INC.

1515 Commerce Parkway • Hays, Kansas 67601

## Test Ticket

NO. 50243

Well Name & No. Kennedy # 1-9 Test No. DST #2 Date 1-20-14  
 Company Raydon Exploration Inc Elevation 2963 KB 2954 GL  
 Address 11601 NW Expressway Ste 1300 Oklahoma City OK 73118  
 Co. Rep / Geo. Edwin Grieves Rig Tomcat 4  
 Location: Sec. 9 Twp. 29s Rge. 33W Co. Haskell State KS

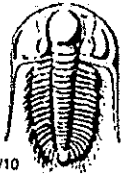
Interval Tested 5393 - 5415 Zone Tested Morrow  
 Anchor Length 22 Drill Pipe Run 5130 Mud Wt. 8.9  
 Top Packer Depth 5389 Drill Collars Run 241 Vis 57  
 Bottom Packer Depth 5393 Wt. Pipe Run 0 WL 8.0  
 Total Depth 5415 Chlorides 1000 ppm System LCM 1416  
 Blow Description IF - Weak Surface Blow Built to 2"  
ISI - No Blow  
FF - Weak Surface Blow Built to 2 1/4"  
FST - No Blow

Rec	Feet of	%gas	%oil	%water	%mud
<u>15</u>	<u>0.6 CM</u>	<u>5</u>	<u>3</u>	<u>92</u>	
Rec	Feet of <u>287 of Weak G:IP</u>	%gas	%oil	%water	%mud
Rec	Feet of	%gas	%oil	%water	%mud
Rec	Feet of	%gas	%oil	%water	%mud
Rec	Feet of	%gas	%oil	%water	%mud

Rec Total 15 BHT 130 Gravity \_\_\_\_\_ API RW \_\_\_\_\_ @ \_\_\_\_\_ °F Chlorides \_\_\_\_\_ ppm

(A) Initial Hydrostatic 2646  Test 1350 T-On Location 1:04  
 (B) First Initial Flow 16  Jars 250 T-Started 2:48  
 (C) First Final Flow 19  Safety Joint 75 T-Open 6:23  
 (D) Initial Shut-In 199  Circ Sub NIC T-Pulled 11:02  
 (E) Second Initial Flow 17  Hourly Standby \_\_\_\_\_ T-Out 13:57  
 (F) Second Final Flow 24  Mileage 150 RIT 229.40 Comments \_\_\_\_\_  
 (G) Final Shut-In 221  Sampler \_\_\_\_\_  
 (H) Final Hydrostatic 2407  Straddle \_\_\_\_\_  
 Shale Packer x 2 500  Ruined Shale Packer \_\_\_\_\_  
 Extra Packer \_\_\_\_\_  Ruined Packer \_\_\_\_\_  
 Extra Recorder \_\_\_\_\_  Extra Copies \_\_\_\_\_  
 Initial Open 30  Day Standby \_\_\_\_\_ Sub Total 0  
 Initial Shut-In 60  Accessibility 150 Total 2554.40  
 Final Flow 60 Sub Total 2554.40 MP/DST Disc't \_\_\_\_\_  
 Final Shut-In 120

Approved By Edwin K. Grieves Our Representative Jim Marshall  
 Trilobite Testing Inc. shall not be liable for damaged of any kind of the property or personnel of the one for whom a test is made, or for any loss suffered or sustained, directly or indirectly, through the use of its equipment, or its statements or opinion concerning the results of any test, tools lost or damaged in the hole shall be paid for at cost by the party for whom the test is made



# TRILOBITE TESTING INC.

1515 Commerce Parkway • Hays, Kansas 67601

## Test Ticket

NO. 50244

Well Name & No. Kennedy #1-9 Test No. DST #3 Date 1-21-14  
 Company Raydon Exploration Inc Elevation 2963 KB 2959 GL  
 Address 1601 NW Expressway Ste 1300 Oklahoma City OK 73118  
 Co. Rep / Geo. Edwin Curieves Rig Tom Cat Rys #4  
 Location: Sec. 9 Twp. 29S Rge. 33W Co. Haskell State KS

Interval Tested 5432-5460 Zone Tested Morrow  
 Anchor Length 28 Drill Pipe Run 5187 Mud Wt. 9.2  
 Top Packer Depth 5428 Drill Collars Run 241 Vis 58  
 Bottom Packer Depth 5432 Wt. Pipe Run 0 WL 6.0  
 Total Depth 5460 Chlorides 1300 ppm System LCM 1666

Blow Description FF - Wear Surface Blow 24"  
ISI - No Blow  
FF - Wear Surface Blow in 12 min Built to 24"  
FSI - No Blow

Rec	Feet of	%gas	%oil	%water	%mud
<u>65</u>	<u>Feet of WCM (Flow Oil Spots in Test)</u>		<u>31</u>	<u>69</u>	
Rec	Feet of	%gas	%oil	%water	%mud
Rec	Feet of	%gas	%oil	%water	%mud
Rec	Feet of	%gas	%oil	%water	%mud
Rec	Feet of	%gas	%oil	%water	%mud

Rec Total 65 BHT 132 Gravity API RW 247 @ 72 °F Chlorides 28000 ppm

- (A) Initial Hydrostatic 2692
- (B) First Initial Flow 22
- (C) First Final Flow 38
- (D) Initial Shut-In 1589
- (E) Second Initial Flow 45
- (F) Second Final Flow 57
- (G) Final Shut-In 1530
- (H) Final Hydrostatic 2411

- Test 1350
- Jars 250
- Safety Joint 75
- Circ Sub NIC
- Hourly Standby 1.5h 150
- Mileage 150 R/T X2
- Sampler 458.80
- Straddle
- Shale Packer X2 500
- Extra Packer
- Extra Recorder
- Day Standby 1d 15h
- Accessibility 150
- Sub Total 2933.80

T-On Location 4:58  
 T-Started 7:32  
 T-Open 11:13  
 T-Pulled \_\_\_\_\_  
 T-Out 19:05

Comments I called me at 10am on 1-23-14 to lead Tools

Ruined Shale Packer  
 Ruined Packer  
 Extra Copies  
 Sub Total 800  
 Total 3733.80  
 MP/DST Disc't \_\_\_\_\_

Initial Open 30  
 Initial Shut-In 60  
 Final Flow 60  
 Final Shut-In 120

Approved By Tom Flowers

Our Representative Edwin Curieves

Trilobite Testing Inc. shall not be liable for damaged of any kind of the property or personnel of the one for whom a test is made, or for any loss suffered or sustained, directly or indirectly, through the use of its equipment, or its statements or opinion concerning the results of any test, tools lost or damaged in the hole shall be paid for at cost by the party for whom the test is made.