



DRILL STEM TEST REPORT

Prepared For: **Norstar Petroleum, Inc.**

88 Inverness Cir. E. Unit F 104
Englewood CO 80112

ATTN: Brad Rine

GL Kern Trust #1-30

30-10s-34w Thomas KS

Start Date: 2012.07.27 @ 10:50:00

End Date: 2012.07.27 @ 16:51:30

Job Ticket #: 47390 DST #: 1

Trilobite Testing, Inc
PO Box 362 Hays, KS 67601
ph: 785-625-4778 fax: 785-625-5620

Printed: 2012.08.09 @ 11:55:13

Norstar Petroleum, Inc.

30-10s-34w Thomas KS

GL Kern Trust #1-30

DST # 1

Johnson

2012.07.27



**TRILOBITE
TESTING, INC.**

DRILL STEM TEST REPORT

Norstar Petroleum, Inc.
88 Inverness Cir. E. Unit F 104
Englewood CO 80112
ATTN: Brad Rine

30-10s-34w Thomas KS
GL Kern Trust #1-30
Job Ticket: 47390 **DST#: 1**
Test Start: 2012.07.27 @ 10:50:00

GENERAL INFORMATION:

Formation: **Johnson**
Deviated: No Whipstock: ft (KB)
Time Tool Opened: 13:05:00
Time Test Ended: 16:51:30
Interval: **4660.00 ft (KB) To 4750.00 ft (KB) (TVD)**
Total Depth: 4750.00 ft (KB) (TVD)
Hole Diameter: 7.88 inches Hole Condition: Fair
Test Type: Conventional Bottom Hole (Initial)
Tester: Chuck Kreuzer Jr.
Unit No: 61
Reference Elevations: 3246.00 ft (KB)
3241.00 ft (CF)
KB to GR/CF: 5.00 ft

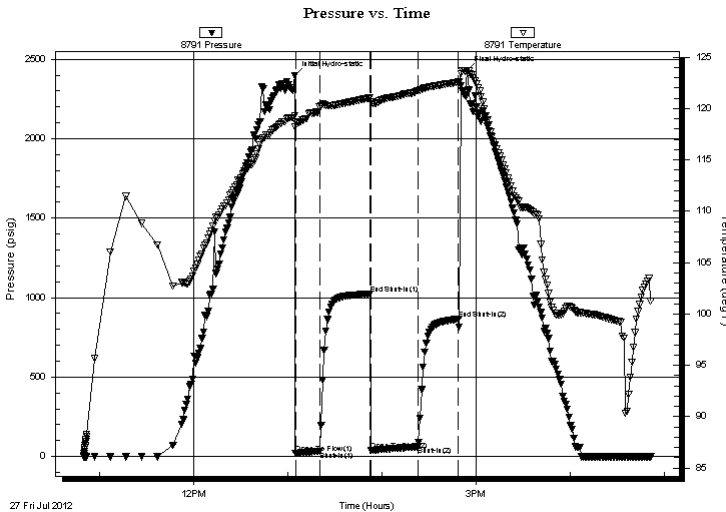
Serial #: 8791

Inside

Press @ Run Depth: 61.75 psig @ 4663.00 ft (KB) Capacity: 8000.00 psig
Start Date: 2012.07.27 End Date: 2012.07.27 Last Calib.: 2012.07.27
Start Time: 10:50:05 End Time: 16:51:29 Time On Btm: 2012.07.27 @ 13:04:30
Time Off Btm: 2012.07.27 @ 14:54:30

TEST COMMENT: IF: Weak surface blow over 15 mins.
IS: No blow back
FF: No blow
FS: No blow back

PRESSURE SUMMARY



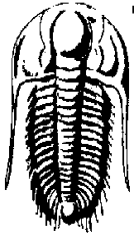
Time (Min.)	Pressure (psig)	Temp (deg F)	Annotation
0	2397.36	119.29	Initial Hydro-static
1	17.97	118.25	Open To Flow (1)
16	33.71	120.14	Shut-In(1)
48	1022.97	121.04	End Shut-In(1)
49	37.30	120.67	Open To Flow (2)
79	61.75	121.73	Shut-In(2)
105	865.15	122.57	End Shut-In(2)
110	2429.79	123.72	Final Hydro-static

Recovery

Length (ft)	Description	Volume (bbl)
75.00	mud-100%m	0.37

Gas Rates

Choke (inches)	Pressure (psig)	Gas Rate (Mcf/d)



**TRILOBITE
TESTING, INC.**

DRILL STEM TEST REPORT

Norstar Petroleum, Inc.
88 Inverness Cir. E. Unit F 104
Englewood CO 80112
ATTN: Brad Rine

30-10s-34w Thomas KS
GL Kern Trust #1-30
Job Ticket: 47390 **DST#: 1**
Test Start: 2012.07.27 @ 10:50:00

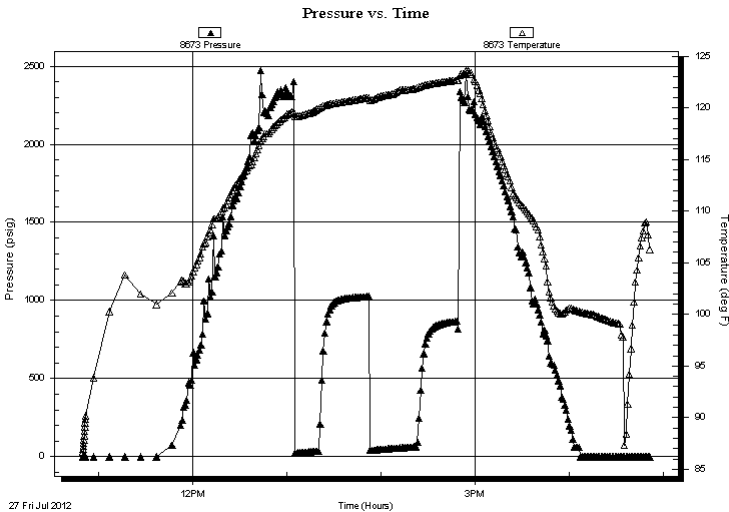
GENERAL INFORMATION:

Formation: **Johnson**
 Deviated: No Whipstock: ft (KB)
 Time Tool Opened: 13:05:00
 Time Test Ended: 16:51:30
 Interval: **4660.00 ft (KB) To 4750.00 ft (KB) (TVD)**
 Total Depth: 4750.00 ft (KB) (TVD)
 Hole Diameter: 7.88 inches Hole Condition: Fair
 Test Type: Conventional Bottom Hole (Initial)
 Tester: Chuck Kreutzer Jr.
 Unit No: 61
 Reference Elevations: 3246.00 ft (KB)
 3241.00 ft (CF)
 KB to GR/CF: 5.00 ft

Serial #: 8673 Outside
 Press@RunDepth: psig @ 4663.00 ft (KB)
 Start Date: 2012.07.27 End Date: 2012.07.27
 Start Time: 10:50:05 End Time: 16:51:29
 Capacity: 8000.00 psig
 Last Calib.: 2012.07.27
 Time On Btm:
 Time Off Btm:

TEST COMMENT: IF: Weak surface blow over 15 mins.
 IS: No blow back
 FF: No blow
 FS: No blow back

PRESSURE SUMMARY



Time (Min.)	Pressure (psig)	Temp (deg F)	Annotation

Recovery

Length (ft)	Description	Volume (bbl)
75.00	mud-100% m	0.37

Gas Rates

Choke (inches)	Pressure (psig)	Gas Rate (Mcf/d)



**TRILOBITE
TESTING, INC.**

DRILL STEM TEST REPORT

TOOL DIAGRAM

Norstar Petroleum, Inc.

30-10s-34w Thomas KS

88 Inverness Cir. E. Unit F 104
Englewood CO 80112

GL Kern Trust #1-30

Job Ticket: 47390

DST#: 1

ATTN: Brad Rine

Test Start: 2012.07.27 @ 10:50:00

Tool Information

Drill Pipe:	Length: 4532.00 ft	Diameter: 3.80 inches	Volume: 63.57 bbl	Tool Weight: 2200.00 lb
Heavy Wt. Pipe:	Length: 0.00 ft	Diameter: 0.00 inches	Volume: 0.00 bbl	Weight set on Packer: 25000.00 lb
Drill Collar:	Length: 124.00 ft	Diameter: 2.25 inches	Volume: 0.61 bbl	Weight to Pull Loose: 58000.00 lb
			<u>Total Volume: 64.18 bbl</u>	Tool Chased 2.00 ft
Drill Pipe Above KB:	24.00 ft			String Weight: Initial 50000.00 lb
Depth to Top Packer:	4660.00 ft			Final 50000.00 lb
Depth to Bottom Packer:	ft			
Interval between Packers:	90.00 ft			
Tool Length:	118.00 ft			
Number of Packers:	2	Diameter: 6.75 inches		

Tool Comments:

Tool Description

Length (ft) Serial No. Position Depth (ft) Accum. Lengths

Tool Description	Length (ft)	Serial No.	Position	Depth (ft)	Accum. Lengths
Shut In Tool	5.00			4637.00	
Hydraulic tool	5.00			4642.00	
Jars	5.00			4647.00	
Safety Joint	3.00			4650.00	
Packer	5.00			4655.00	28.00 Bottom Of Top Packer
Packer	5.00			4660.00	
Stubb	1.00			4661.00	
Perforations	1.00			4662.00	
Change Over Sub	1.00			4663.00	
Recorder	0.00	8791	Inside	4663.00	
Recorder	0.00	8673	Outside	4663.00	
Drill Pipe	63.00			4726.00	
Change Over Sub	1.00			4727.00	
Perforations	20.00			4747.00	
Bullnose	3.00			4750.00	90.00 Bottom Packers & Anchor

Total Tool Length: 118.00



**TRILOBITE
TESTING, INC.**

DRILL STEM TEST REPORT

FLUID SUMMARY

Norstar Petroleum, Inc.
88 Inverness Cir. E. Unit F 104
Englewood CO 80112
ATTN: Brad Rine

30-10s-34w Thomas KS
GL Kern Trust #1-30
Job Ticket: 47390 **DST#: 1**
Test Start: 2012.07.27 @ 10:50:00

Mud and Cushion Information

Mud Type: Gel Chem	Cushion Type:	Oil API:	deg API
Mud Weight: 9.00 lb/gal	Cushion Length: ft	Water Salinity:	ppm
Viscosity: 54.00 sec/qt	Cushion Volume: bbl		
Water Loss: 9.59 in ³	Gas Cushion Type:		
Resistivity: ohm.m	Gas Cushion Pressure: psig		
Salinity: 6000.00 ppm			
Filter Cake: 2.00 inches			

Recovery Information

Recovery Table

Length ft	Description	Volume bbl
75.00	mud-100%m	0.369

Total Length: 75.00 ft Total Volume: 0.369 bbl
 Num Fluid Samples: 0 Num Gas Bombs: 0 Serial #:
 Laboratory Name: Laboratory Location:
 Recovery Comments:

Serial #: 8791

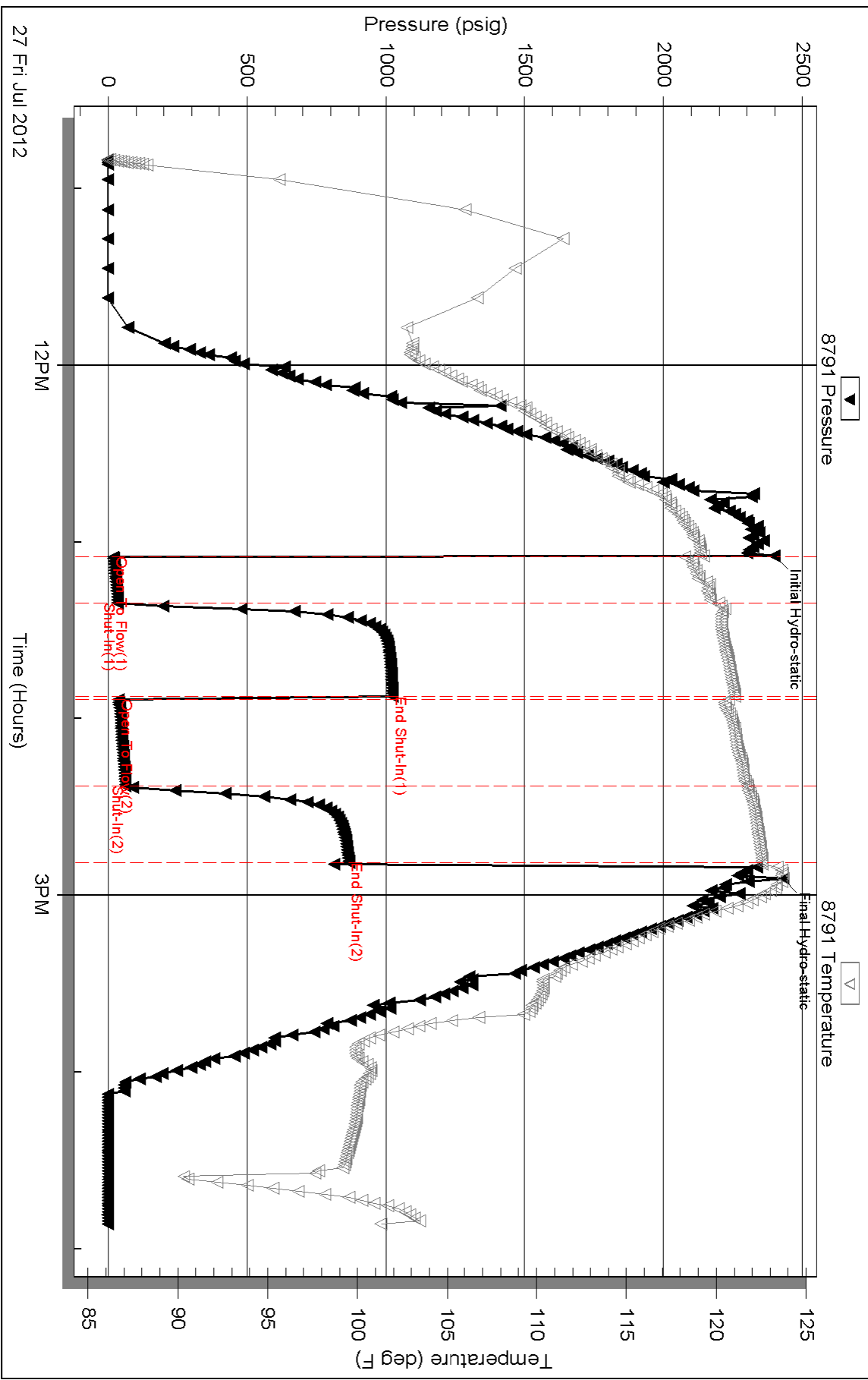
Inside

Norstar Petroleum, Inc.

GL Kern Trust #1-30

DST Test Number: 1

Pressure vs. Time

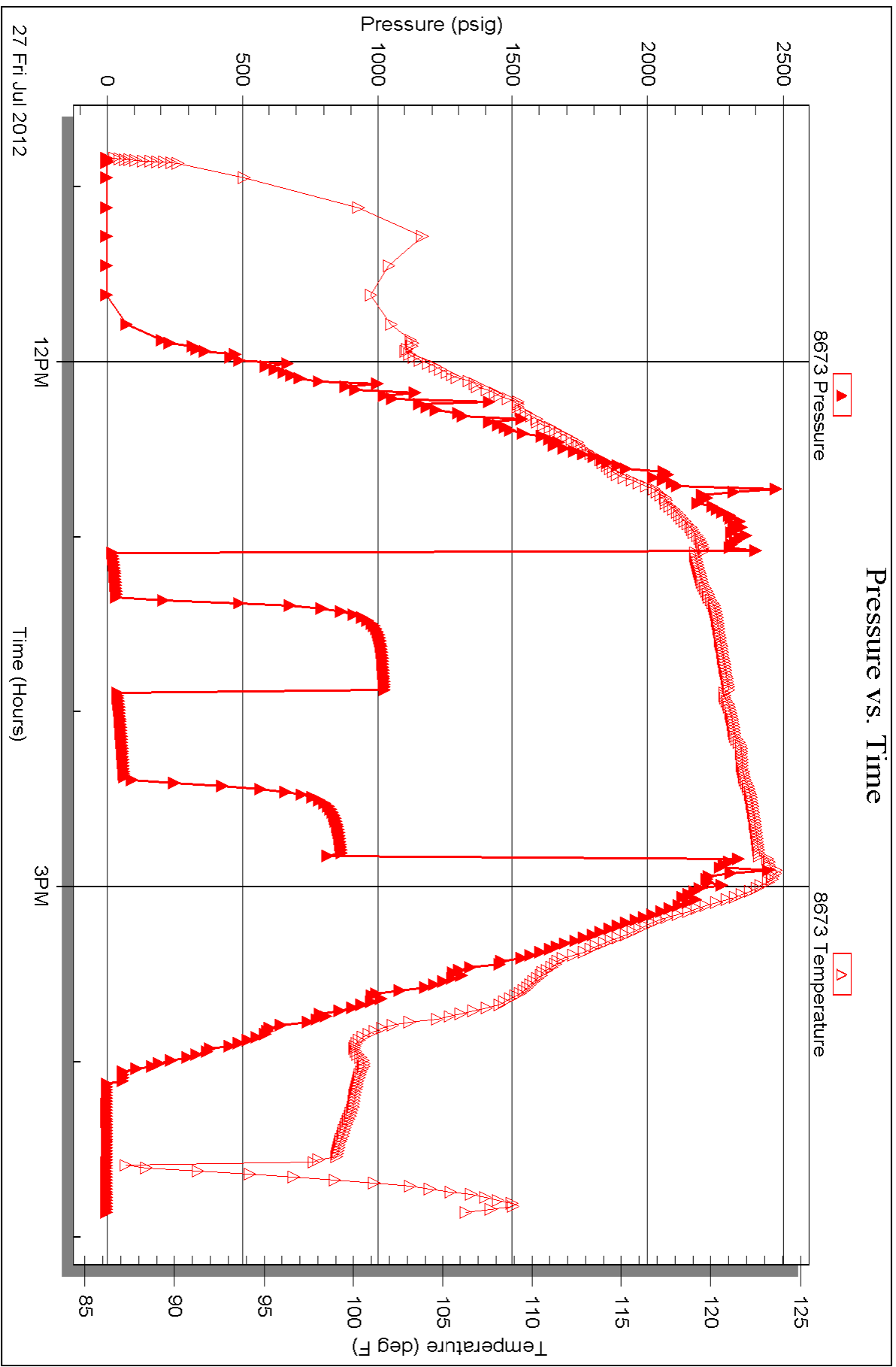


Serial #: 8673

Outside Norstar Petroleum, Inc.

GL Kern Trust #1-30

DST Test Number: 1

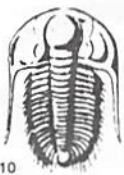


27 Fri Jul 2012

12PM

Time (Hours)

3PM



TRILOBITE TESTING INC.

P.O. Box 1733 • Hays, Kansas 67601

Test Ticket

NO. 47390

Well Name & No. 47390 G.L. Kern Trust # 1-30 Test No. 1 Date 7-27-2012
 Company Norstar Petroleum, Inc. Elevation 3246 KB 3241 GL
 Address 88 Inverness Cir E. Unit F104 Englewood Co. 80112
 Co. Rep / Geo. Brad Rine Rig rw#8
 Location: Sec. 30 Twp. 10S Rge. 34W Co. Thomas State Ks.

Interval Tested 4660 4750 Zone Tested Johnson
 Anchor Length 90 Drill Pipe Run 4532 Mud Wt. 9.3
 Top Packer Depth 4655 Drill Collars Run 124 Vis 54
 Bottom Packer Depth 4660 Wt. Pipe Run -0- WL 9.6
 Total Depth 4750 Chlorides 6000 ppm System LCM 2#

Blow Description IF: Weak Surface blow over 15 mins.

ISI: No blow back

FF: No blow

FSI: No blow back

Rec	Feet of	%gas	%oil	%water	%mud
<u>75</u>	<u>mud</u>			<u>100</u>	

Rec Total 75 BHT 122 Gravity _____ API RW _____ @ _____ ° F Chlorides _____ ppm

(A) Initial Hydrostatic <u>2397</u>	<input checked="" type="checkbox"/> Test 1250	T-On Location <u>9:45</u>
(B) First Initial Flow <u>18</u>	<input checked="" type="checkbox"/> Jars 250	T-Started <u>10:50</u>
(C) First Final Flow <u>34</u>	<input checked="" type="checkbox"/> Safety Joint 75	T-Open <u>13:05</u>
(D) Initial Shut-In <u>1023</u>	<input type="checkbox"/> Circ Sub	T-Pulled <u>14:50</u>
(E) Second Initial Flow <u>37</u>	<input type="checkbox"/> Hourly Standby	T-Out <u>16:51</u>
(F) Second Final Flow <u>62</u>	<input checked="" type="checkbox"/> Mileage <u>75 x 2 = 150 x 1.55 = 232.50</u>	Comments <u>7-28-2012 Loaded</u>
(G) Final Shut-In <u>865</u>	<input type="checkbox"/> Sampler <u>Disov & back to lead 2/465</u>	<u>tools</u>
(H) Final Hydrostatic <u>2430</u>	<input type="checkbox"/> Straddle	<input type="checkbox"/> Ruined Shale Packer
Initial Open <u>15</u>	<input type="checkbox"/> Shale Packer	<input type="checkbox"/> Ruined Packer
Initial Shut-In <u>30</u>	<input type="checkbox"/> Extra Packer	<input type="checkbox"/> Extra Copies
Final Flow <u>30</u>	<input type="checkbox"/> Extra Recorder	Sub Total <u>0</u>
Final Shut-In <u>30</u>	<input type="checkbox"/> Day Standby	Total <u>2040</u>
	<input type="checkbox"/> Accessibility	MP/DST Disc't _____
	Sub Total <u>2040</u>	

Approved By _____ Our Representative Chuck Ray

TriLOBITE TESTING INC. shall not be liable for damaged of any kind of the property or personnel of the one for whom a test is made, or for any loss suffered or sustained, directly or indirectly, through the use of its equipment, or its statements or opinion concerning the results of any test, tools lost or damaged in the hole shall be paid for at cost by the party for whom the test is made.