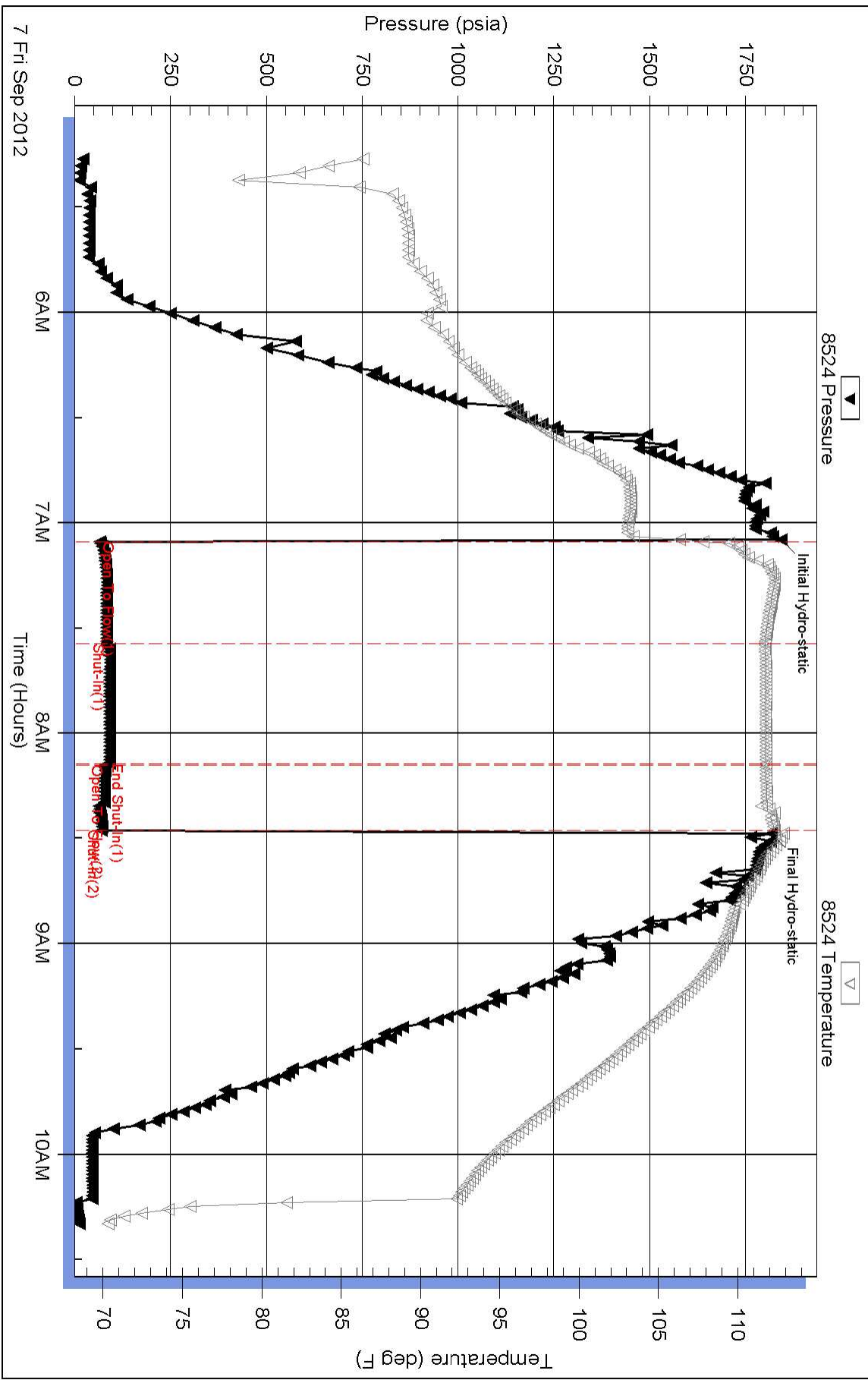


Pressure vs. Time





DRILL STEM TEST REPORT

FLUID SUMMARY

CAPTIVA

3-22S-16W

445 UNION BLVD SUITE 208 LAKEWOOD CO
80228

1-3WFYOG

Job Ticket: 17734

DST#: 2

ATTN: CHARLIE STURDAVANT

Test Start: 2012.09.07 @ 02:15:15

Mud and Cushion Information

Mud Type: Gel Chem
Mud Weight: 9.00 lb/gal
Viscosity: 48.00 sec/qt
Water Loss: 7.60 in³
Resistivity: ohm.m
Salinity: ppm
Filter Cake: 7.60 inches

Cushion Type:
Cushion Length: ft
Cushion Volume: bbl
Gas Cushion Type:
Gas Cushion Pressure: psia

Oil API: deg API
Water Salinity: ppm

Recovery Information

Recovery Table

Length ft	Description	Volume bbl
15.00	MUD WITH A TRACE OF OIL 100%MUD	0.074

Total Length: 15.00 ft Total Volume: 0.074 bbl

Num Fluid Samples: 0

Num Gas Bombs: 0

Serial #:

Laboratory Name:

Laboratory Location:

Recovery Comments:



DRILL STEM TEST REPORT

TOOL DIAGRAM

CAPTIVA

3-22S-16W

445 UNION BLVD SUITE 208 LAKEWOOD CO
80228

1-3WFYOG

Job Ticket: 17734

DST#: 2

ATTN: CHARLIE STURDAVANT

Test Start: 2012.09.07 @ 02:15:15

Tool Information

Drill Pipe:	Length: 3631.00 ft	Diameter: 3.88 inches	Volume: 53.10 bbl	Tool Weight: 2000.00 lb
Heavy Wt. Pipe:	Length: 0.00 ft	Diameter: inches	Volume: 0.00 bbl	Weight set on Packer: 20000.00 lb
Drill Collar:	Length: 210.00 ft	Diameter: 2.25 inches	Volume: 1.03 bbl	Weight to Pull Loose: 95000.00 lb
			<u>Total Volume: 54.13 bbl</u>	Tool Chased 0.00 ft
Drill Pipe Above KB:	2.00 ft			String Weight: Initial 67000.00 lb
Depth to Top Packer:	3867.00 ft			Final 67000.00 lb
Depth to Bottom Packer:	ft			
Interval between Packers:	5.00 ft			
Tool Length:	33.00 ft			
Number of Packers:	2	Diameter: 6.75 inches		
Tool Comments:				

Tool Description	Length (ft)	Serial No.	Position	Depth (ft)	Accum. Lengths
------------------	-------------	------------	----------	------------	----------------

Shut-In Tool	5.00			3844.00	
Hydraulic Tool	5.00			3849.00	
Jars	6.00			3855.00	
Safety Joint	2.00			3857.00	
Packer	5.00			3862.00	28.00 Bottom Of Top Packer
Packer	5.00			3867.00	
Perforations	0.00			3867.00	
Recorder	1.00	8524	Inside	3868.00	
Recorder	1.00	6806	Outside	3869.00	
Bullnose	3.00			3872.00	5.00 Bottom Packers & Anchor
Total Tool Length:	33.00				



DRILL STEM TEST REPORT

CAPTIVA

3-22S-16W

445 UNION BLVD SUITE 208 LAKEWOOD CO
80228

1-3WFYOG

Job Ticket: 17734

DST#: 2

ATTN: CHARLIE STURDAVANT

Test Start: 2012.09.07 @ 02:15:15

GENERAL INFORMATION:

Formation: **ARBUCKLE**

Deviated: No Whipstock: ft (KB)

Time Tool Opened: 04:05:15

Time Test Ended: 07:20:15

Test Type: Conventional Bottom Hole (Initial)

Tester: dave

Unit No: 3345

Interval: ft (KB) To ft (KB) (TVD)

Reference Elevations: 1997.00 ft (KB)

Total Depth: 3872.00 ft (KB) (TVD)

1986.00 ft (CF)

Hole Diameter: 7.88 inches Hole Condition:

KB to GR/CF: 11.00 ft

Serial #: 6806 Outside

Press @ RunDepth: 52.09 psia @ 3869.00 ft (KB)

Capacity: 5000.00 psia

Start Date: 2012.09.07

End Date: 2012.09.07

Last Calib.: 2012.09.07

Start Time: 05:13:48

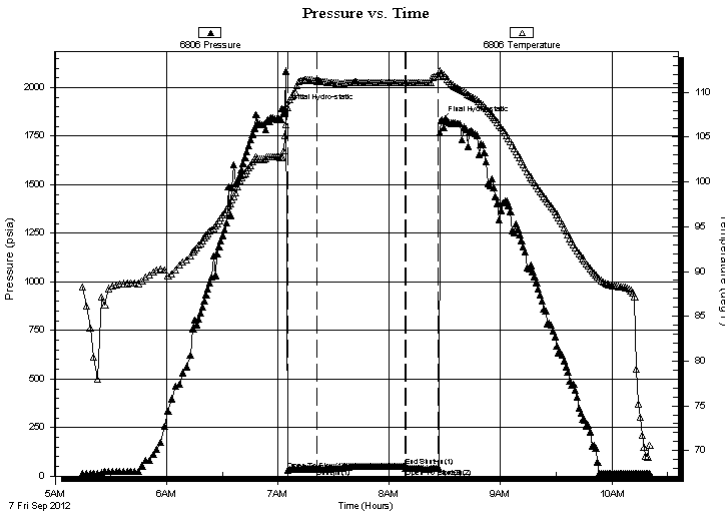
End Time: 10:20:48

Time On Btm: 2012.09.07 @ 07:03:48

Time Off Btm: 2012.09.07 @ 08:27:48

TEST COMMENT: 15 MIN INITIAL OPENING SURFACE BLOW
45 MIN INITIAL SHUT IN NO BLOW
15 MIN FINIAL OPENING NO BLOW/AFTER 10 MIN FLUSH TOOL/NO BLOW
PO H DST #2

PRESSURE SUMMARY



Time (Min.)	Pressure (psia)	Temp (deg F)	Annotation
0	1893.09	105.12	Initial Hydro-static
2	28.09	108.26	Open To Flow (1)
17	38.91	111.28	Shut-In(1)
65	52.09	111.05	End Shut-In(1)
65	38.92	111.05	Open To Flow (2)
83	40.59	111.81	Shut-In(2)
84	1830.22	112.12	Final Hydro-static

Recovery

Length (ft)	Description	Volume (bbl)
15.00	MUD WITH A TRACE OF OIL 100%MUD	0.07

Gas Rates

Choke (inches)	Pressure (psia)	Gas Rate (Mcf/d)



DRILL STEM TEST REPORT

CAPTIVA

3-22S-16W

445 UNION BLVD SUITE 208 LAKEWOOD CO
80228

1-3WFOYG

Job Ticket: 17734

DST#: 2

ATTN: CHARLIE STURDAVANT

Test Start: 2012.09.07 @ 02:15:15

GENERAL INFORMATION:

Formation: **ARBUCKLE**

Deviated: No Whipstock: ft (KB)

Time Tool Opened: 04:05:15

Time Test Ended: 07:20:15

Test Type: Conventional Bottom Hole (Initial)

Tester: dave

Unit No: 3345

Interval: ft (KB) To ft (KB) (TVD)

Reference Elevations: 1997.00 ft (KB)

Total Depth: 3872.00 ft (KB) (TVD)

1986.00 ft (CF)

Hole Diameter: 7.88 inches Hole Condition:

KB to GR/CF: 11.00 ft

Serial #: 8524

Inside

Press @ Run Depth: 83.31 psia @ 3868.00 ft (KB)

Capacity: 5000.00 psia

Start Date: 2012.09.07

End Date:

2012.09.07

Last Calib.:

2012.09.07

Start Time: 05:15:15

End Time:

10:20:15

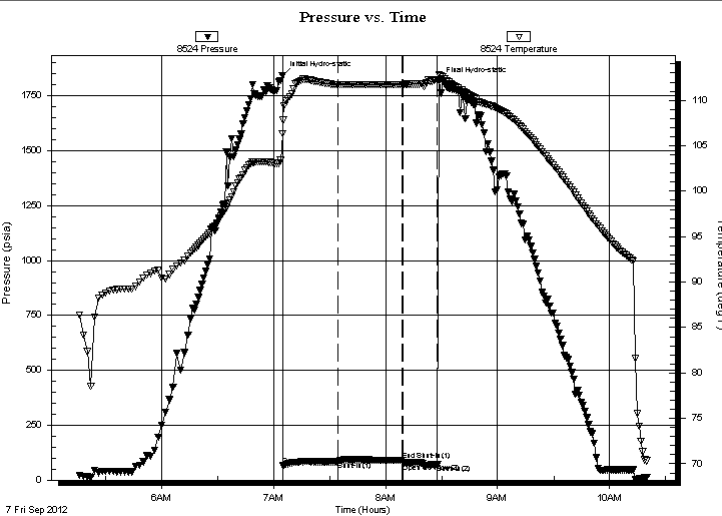
Time On Btm:

2012.09.07 @ 07:04:45

Time Off Btm:

2012.09.07 @ 08:28:45

TEST COMMENT: 15 MIN INITIAL OPENING SURFACE BLOW
45 MIN INITIAL SHUT IN NO BLOW
15 MIN FINIAL OPENING NO BLOW/AFTER 10 MIN FLUSH TOOL/NO BLOW
PO H DST #2



PRESSURE SUMMARY

Time (Min.)	Pressure (psia)	Temp (deg F)	Annotation
0	1843.71	106.35	Initial Hydro-static
1	66.41	107.81	Open To Flow (1)
30	83.31	111.71	Shut-In(1)
64	91.17	111.76	End Shut-In(1)
65	79.05	111.76	Open To Flow (2)
83	70.68	112.28	Shut-In(2)
84	1817.07	112.85	Final Hydro-static

Recovery

Length (ft)	Description	Volume (bbl)
15.00	MUD WITH A TRACE OF OIL 100%MUD	0.07

Gas Rates

Choke (inches)	Pressure (psia)	Gas Rate (Mcf/d)



DRILL STEM TEST REPORT

Prepared For: **CAPTIVA**

445 UNION BLVD SUITE 208 LAKEWOOD
CO 80228

ATTN: CHARLIE STURDAVANT

1-3WFYOG

3-22S-16W

Start Date: 2012.09.07 @ 02:15:15

End Date: 2012.09.07 @ 07:20:15

Job Ticket #: 17734 DST #: 2

Superior Testers Enterprises LLC
PO Box 138 Great Bend KS 67530
1-800-792-6902

Printed: 2012.09.07 @ 02:35:08

CAPTIVA
3-22S-16W
1-3WFYOG
DST # 2
ARBUCKLE
2012.09.07