



*Depend on US*

# Post Job Report

## **Unit Petroleum**

Loudenback 18 #2H

5/18/2014

Surface Casing

Reno County, KS





SandRidge Energy  
Loudenback 18 #2H  
Reno County, KS.

Table of Contents:

1.0 Executive Summary.....3

2.0 Job Summary.....4

    2.1 Job Event Log.....4

    2.2 Job Summary Chart.....5



SandRidge Energy  
Loudenback 18 #2H  
Reno County, KS.

## 1.0 Executive Summary

Allied Oil & Gas Services would like to thank you, for the award of the provision of cementing products and services on the well Loudenback 18 #2H surface casing.

A pre-job meeting was held to discuss job details, review the safety hazards, potential environmental impact and established emergency procedures.

Allied mixed and pumped the following slurries:

112.73 Bbls (300 sacks) of 12.6 ppg Lead Slurry:  
Class A AMD – 2.11 Yield  
2% Gypseal  
2% Calcium Chloride  
.25 lb/sk Flocele

59.84 Bbls (280 sacks) of 15.6 ppg Tail slurry:  
Class A - 1.2 Yield  
2% Calcium Chloride  
.25 lb/sk Flocele

The top plug was then released and displaced with 117.88 Bbls of fresh water. The plug bumped and pressured up to 1000 psi. Pressure was released and floats held.

All real time data is shown on the graph in the attachment section.

Allied Oil & Gas Services remains committed to provide operational excellence and superior product performance. All comments and suggestions are greatly appreciated and help us to continue to provide this level of service.

Again we want to thank you for the opportunity to perform these and your future cementing & acidizing service needs.

Date: 5-18-14 District: Ht Bond Ticket No. 62964  
 Company: Davis Petroleum Rig: 20-305  
 Lease: Loudenloch Well No. 18-2H  
 County: Perry State: LA  
 Location: Sylvia SS, 46 Field: \_\_\_\_\_

CASING DATA: Conductor  PTA  Squeeze  Misc   
 Surface  Intermediate  Production  Liner   
 Size: 9 5/8 Type: New Weight: 31.2 Collar: \_\_\_\_\_

Casing Depths: Top \_\_\_\_\_ Bottom: 1520'

Drill Pipe: Size \_\_\_\_\_ Weight \_\_\_\_\_ Collars \_\_\_\_\_  
 Open Hole: Size 12 1/4 T.D. 1520 ft. P.B. to \_\_\_\_\_ ft.

CAPACITY FACTORS:

Casing: Bbls/Lin. ft. 0.2773 Lin. ft./Bbl. 12.9349  
 Open Holes: Bbls/Lin. ft. \_\_\_\_\_ Lin. ft./Bbl. \_\_\_\_\_  
 Drill Pipe: Bbls/Lin. ft. \_\_\_\_\_ Lin. ft./Bbl. \_\_\_\_\_  
 Annulus: Bbls/Lin. ft. 0.0558 Lin. ft./Bbl. 12.9222  
 Bbls/Lin. ft. \_\_\_\_\_ Lin. ft./Bbl. \_\_\_\_\_  
 Perforations: From \_\_\_\_\_ ft. to \_\_\_\_\_ ft. Amt. \_\_\_\_\_

CEMENT DATA:

Spacer Type: \_\_\_\_\_  
 Amt. \_\_\_\_\_ Skys Yield \_\_\_\_\_ ft<sup>3</sup>/sk Density \_\_\_\_\_ PPG

LEAD: Pump Time \_\_\_\_\_ hrs. Type AMO 2500mpg  
2500mpg, 25cc, 1/4 #9 cement/sk Excess \_\_\_\_\_  
 Amt. 300 Skys Yield 2.11 ft<sup>3</sup>/sk Density 12.6 PPG

TAIL: Pump Time \_\_\_\_\_ hrs. Type Clear + 25cc  
1/4 #9 cement/sk Excess \_\_\_\_\_  
 Amt. 280 Skys Yield 1.20 ft<sup>3</sup>/sk Density 15.6 PPG

WATER: Lead \_\_\_\_\_ gals/sk Tail \_\_\_\_\_ gals/sk Total \_\_\_\_\_ Bbls.

Pump Trucks Used: 577 - Kevin Eddy  
 Bulk Equip.: 599 - Don Cooper  
820-844 - Brian Long

Float Equip: Manufacturer Woodward  
 Shoe: Type Sealed float shoe Depth \_\_\_\_\_

Float: Type \_\_\_\_\_ Depth \_\_\_\_\_

Centralizers: Quantity 5 Plugs Top Redden Btm. \_\_\_\_\_

Stage Collars \_\_\_\_\_

Special Equip. 1. Bender

Disp. Fluid Type H2O Amt. 112.88 Bbls. Weight \_\_\_\_\_ PPG  
 Mud Type \_\_\_\_\_ Weight \_\_\_\_\_ PPG

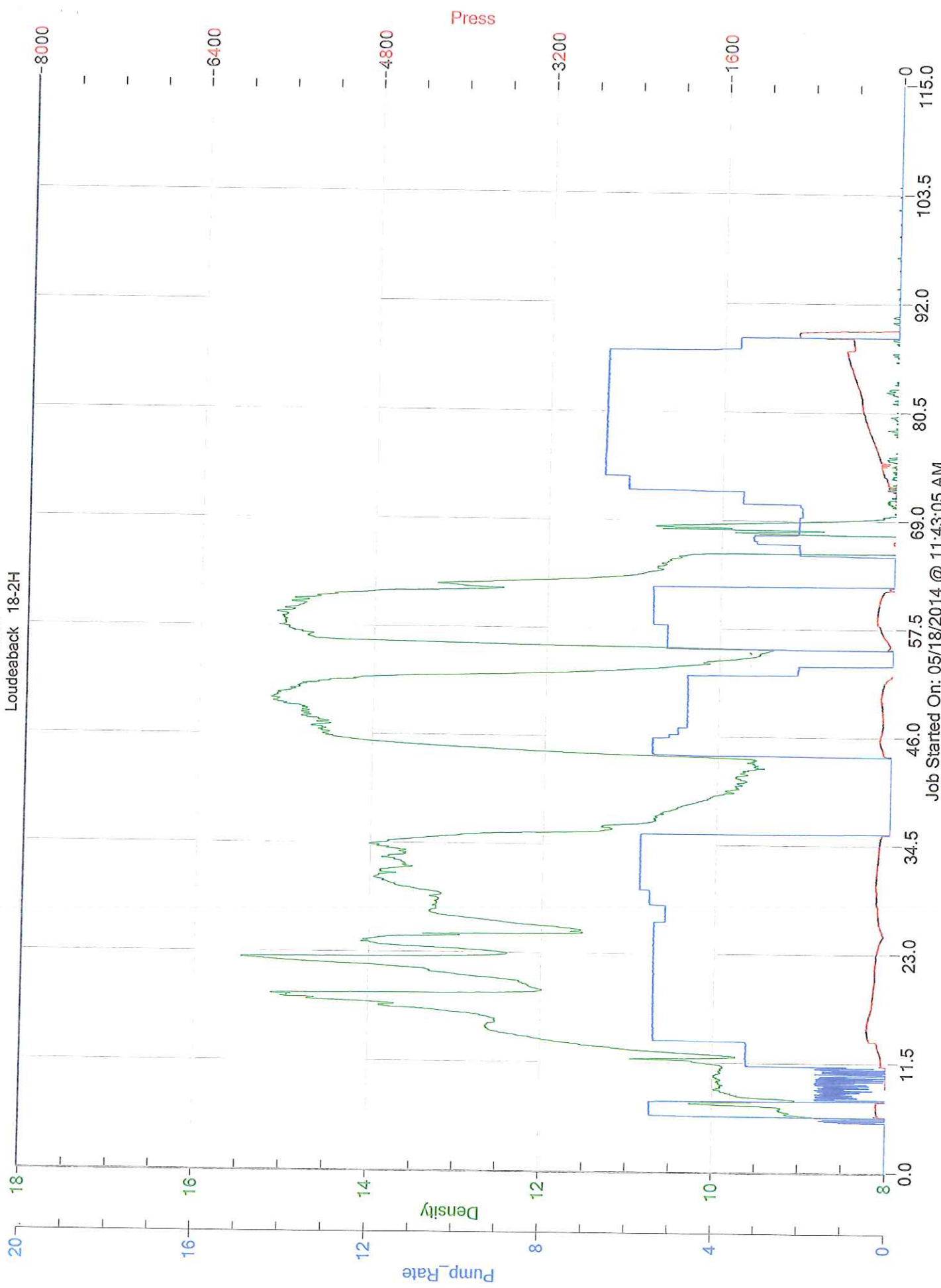
COMPANY REPRESENTATIVE \_\_\_\_\_

CEMENTER Tim Dickson

TIME	PRESSURES PSI		FLUID PUMPED DATA			REMARKS
	DRILL PIPE CASING	ANNULUS	TOTAL FLUID	Pumped Per Time Period	RATE Bbls Min.	
<u>11:00 AM</u>						<u>Arrive on location S.M. Rig up</u>
<u>11:00 AM</u>						<u>Hookup &amp; Break circulation Rig crew open Annulus</u>
<u>11:45 AM</u>					<u>2 1/2</u>	<u>Pump 5 H2O</u>
<u>11:52 AM</u>			<u>112.73</u>		<u>5</u>	<u>Start Lead Cement</u>
<u>12:25 PM</u>			<u>59.84</u>		<u>5</u>	<u>Start Tail Cement</u>
<u>12:40 PM</u>						<u>Release Plug</u>
<u>12:42 PM</u>						<u>Start Displacement</u>
<u>1:14 PM</u>						<u>Lead Plug</u>
<u>1:15 PM</u>						<u>Release &amp; float held</u>
<u>5</u>						<u>Finished</u>

# Unit

Loudeback 18-2H



Job Started On: 05/18/2014 @ 11:43:05 AM