



Depend on US

Post Job Report

Unit Petroleum

Loudenback 18 #2H

6/2/2014

Production Casing

Reno County, KS





SandRidge Energy
Loudenback 18 #2H
Reno County, KS.

Table of Contents:

1.0 Executive Summary.....3

2.0 Job Summary.....4

 2.1 Job Event Log.....4

 2.2 Job Summary Chart.....5



SandRidge Energy
Loudenback 18 #2H
Reno County, KS.

1.0 Executive Summary

Allied Oil & Gas Services would like to thank you, for the award of the provision of cementing products and services on the well Loudenback 18 #2H production casing.

A pre-job meeting was held to discuss job details, review the safety hazards, potential environmental impact and established emergency procedures.

Allied began the job by pressure testing lines to 2000 psi. After a successful test Allied mixed and pumped the following slurry:

89.05 Bbls (400 sacks) of 15.2 ppg Tail slurry:
Class H - 1.25 Yield
0.6% FL-160
0.2% SA-51

The top plug was then released and displaced with 151.75 Bbls of fresh water. The plug bumped and pressured up to 2000 psi. Pressure was released and floats held.

All real time data is shown on the graph in the attachment section.

Allied Oil & Gas Services remains committed to provide operational excellence and superior product performance. All comments and suggestions are greatly appreciated and help us to continue to provide this level of service.

Again we want to thank you for the opportunity to perform these and your future cementing & acidizing service needs.

Date 6-2-14 District great Bend Ticket No. 62992
 Company unit petroleum Rig unit 303
 Lease Roudenbach Well No. 18-2H
 County Reno State Ky
 Location roylva 55 9w Field _____
clnt

CASING DATA: Conductor PTA Squeeze Misc
 Surface Intermediate Production Liner
 Size 4 1/2 x 5 1/2 Type _____ Weight 11.6# 17# Collar _____

Casing Depths: Top _____ Bottom 7860

Drill Pipe: Size _____ Weight _____ Collars _____
 Open Hole: Size 8 3/4 T.D. 7866 ft. P.B. to _____ ft.

CAPACITY FACTORS:

Casing: Bbls/Lin. ft. .0155 Lin. ft./Bbl. _____
 Drill Pipe: Bbls/Lin. ft. .0232 Lin. ft./Bbl. _____
 Annulus: Bbls/Lin. ft. _____ Lin. ft./Bbl. _____
 Perforations: From _____ ft. to _____ ft. Amt. _____

CEMENT DATA:

Spacer Type: 20BBI DV1100
 Amt. _____ Sks Yield _____ ft³/sk Density _____ PPG

LEAD: Pump Time _____ hrs. Type 400 m class
.67-F1-160 .21-Sa-45 Excess _____

Amt. _____ Sks Yield _____ ft³/sk Density _____ PPG

TAIL: Pump Time _____ hrs. Type _____
 Excess _____

Amt. _____ Sks Yield _____ ft³/sk Density _____ PPG

WATER: Lead _____ gals/sk Tail _____ gals/sk Total _____ Bbls.

Pump Trucks Used 597 Mike northern
 Bulk Equip. _____

Float Equip: Manufacturer _____

Shoe: Type _____ Depth _____

Float: Type _____ Depth _____

Centralizers: Quantity _____ Plugs Top _____ Btm. _____

Stage Collars _____

Special Equip. _____

Disp. Fluid Type H2O Amt. 151.75 Bbls. Weight _____ PPG

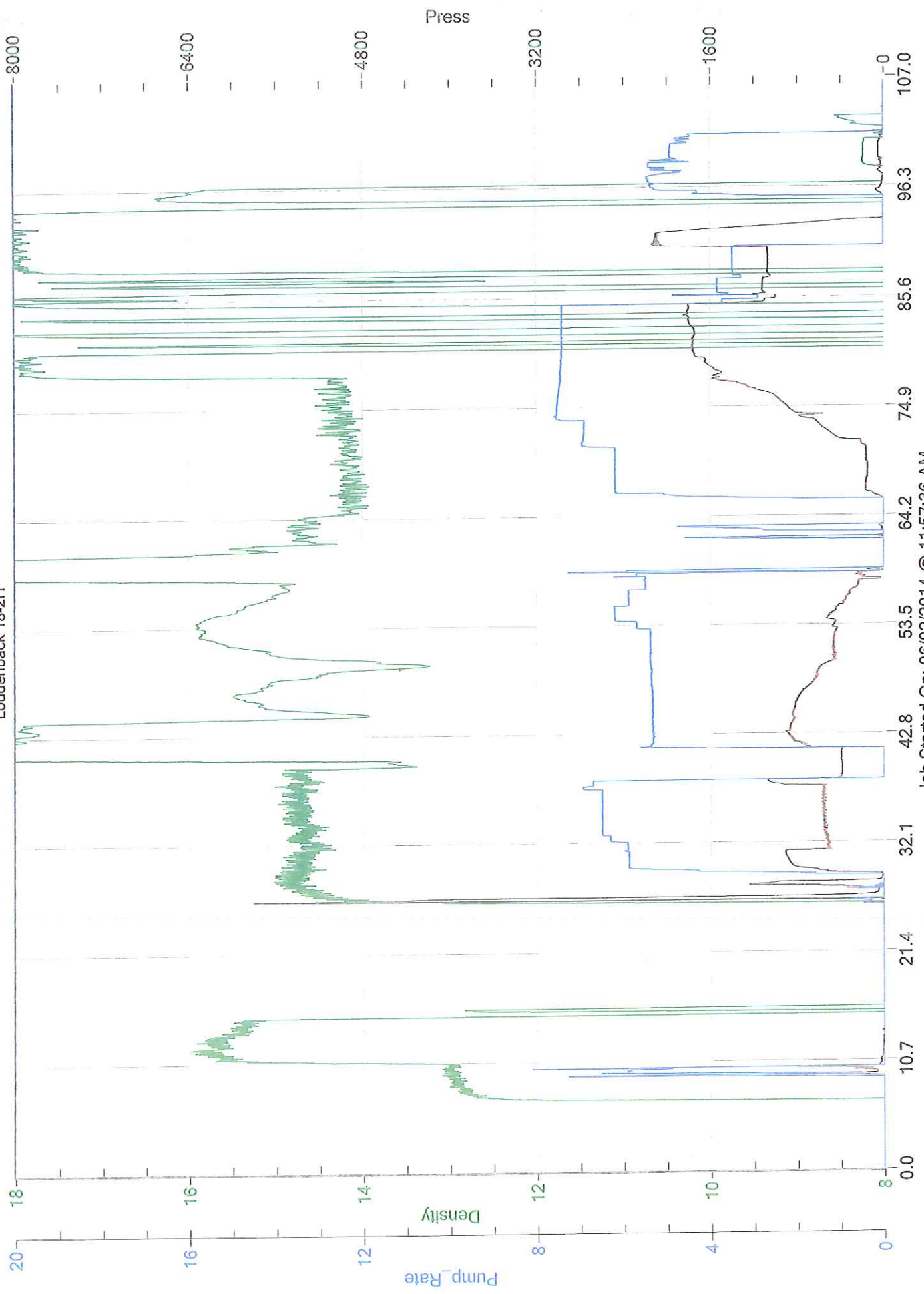
Mud Type _____ Weight _____ PPG

COMPANY REPRESENTATIVE _____

CEMENTER Charles King

TIME	PRESSURES PSI		FLUID PUMPED DATA			REMARKS
	DRILL PIPE CASING	ANNULUS	TOTAL FLUID	Pumped Per Time Period	RATE Bbls Min.	
9:30						on location Rig up 5.m.
11:30						Rig Ran 3839.4' 4 1/2 csg 3978' 5 1/2 csg
11:45						Broke circ 2, 1 Rig Mast
12:22						pressure test to 2000 #
12:26			25		6	pump 1000 gal DV1100 5 BBI H2O
12:35			89.05		8	mix 400 m class H .67-F1160 .21-Sa
12:55			2		1	pump 2BBI Sugar water
12:56						wash pump & line
1:00						Release plug
1:02			40		6	displace 40 BBI sugar H2O
			111.75		6	& 111.75 BBI H2O
1:28						rand plug @ 2000 psi
1:30						Release & float held

Unit Petroleum Loudenback 18-2H



Job Started On: 06/02/2014 @ 11:57:36 AM