



Depend on US

Post Job Report

Unit Petroleum

Loudenback 18 #2H

5/22/2014

Intermediate Casing

Reno County, KS





SandRidge Energy
Loudenback 18 #2H
Reno County, KS.

Table of Contents:

1.0 Executive Summary.....3

2.0 Job Summary.....4

 2.1 Job Event Log.....4

 2.2 Job Summary Chart.....5



SandRidge Energy
Loudenback 18 #2H
Reno County, KS.

1.0 Executive Summary

Allied Oil & Gas Services would like to thank you, for the award of the provision of cementing products and services on the well Loudenback 18 #2H intermediate casing.

A pre-job meeting was held to discuss job details, review the safety hazards, potential environmental impact and established emergency procedures.

Allied began the job by pressure testing lines to 2000 psi. After a successful test Allied mixed and pumped the following slurry:

37.61 Bbls (160 sacks) of 15.4 ppg Tail slurry:
Class A - 1.32 Yield
5% Gypseal
10% Salt

The top plug was then released and displaced with 164.76 Bbls of fresh water. The plug bumped and pressured up to 1650 psi. Pressure was released and floats held.

All real time data is shown on the graph in the attachment section.

Allied Oil & Gas Services remains committed to provide operational excellence and superior product performance. All comments and suggestions are greatly appreciated and help us to continue to provide this level of service.

Again we want to thank you for the opportunity to perform these and your future cementing & acidizing service needs.

Date 5-22-14 District WT Band Ticket No. 62968
 Company West Pet Rig WEST 303
 Lease Woodenbush Well No. 192H
 County DeWitt State Ky
 Location Sydney 39 90 Field _____

CEMENT DATA:

Spacer Type: _____
 Amt. _____ Sks Yield _____ ft³/sk Density _____ PPG

CASING DATA: Conductor PTA Squeeze Misc
 Surface Intermediate Production Liner
 Size 7" Type new Weight 36# Collar _____

LEAD: Pump Time _____ hrs. Type Clean +
50 Bags 108.5ft Excess _____
 Amt. 1600 Sks Yield 1.32 ft³/sk Density 13.4 PPG

Casing Depths: Top _____ Bottom 4295'

TAIL: Pump Time _____ hrs. Type _____
 Excess _____
 Amt. _____ Sks Yield _____ ft³/sk Density _____ PPG
 WATER: Lead _____ gals/sk Tail _____ gals/sk Total _____ Bbls.

Drill Pipe: Size _____ Weight _____ Collars _____
 Open Hole: Size 8 7/8" T.D. 4295 ft. P.B. to _____ ft.

Pump Trucks Used 557 - Charlie Kemmer
 Bulk Equip. 603 - Don Cooper

CAPACITY FACTORS:
 Casing: Bbbs/Lin. ft. 10383 Lin. ft./Bbl. 26.1351
 Open Holes: Bbbs/Lin. ft. _____ Lin. ft./Bbl. _____
 Drill Pipe: Bbbs/Lin. ft. _____ Lin. ft./Bbl. _____
 Annulus: Bbbs/Lin. ft. 20463 Lin. ft./Bbl. 37.3481
 Bbbs/Lin. ft. _____ Lin. ft./Bbl. _____
 Perforations: From _____ ft. to _____ ft. Amt. _____

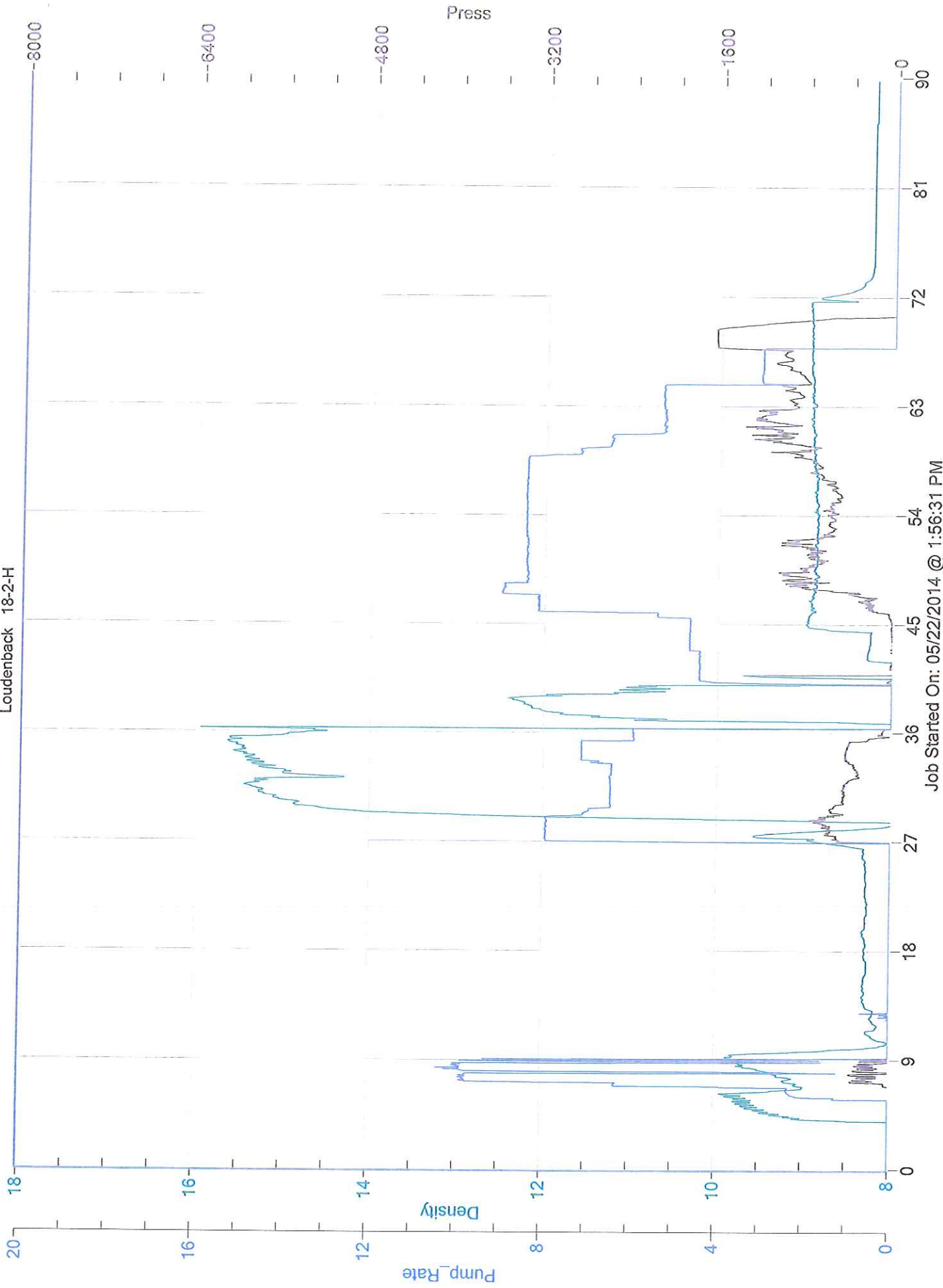
Float Equip: Manufacturer _____
 Shoe: Type Standard float shoe Depth _____
 Float: Type _____ Depth _____
 Centralizers: Quantity _____ Plugs Top Redline Btm. _____
 Stage Collars _____
 Special Equip. _____
 Disp. Fluid Type H₂O Amt. 164.76 Bbbs. Weight _____ PPG
 Mud Type _____ Weight _____ PPG

COMPANY REPRESENTATIVE _____

CEMENTER Tom Anderson

TIME	PRESSURES PSI		FLUID PUMPED DATA			REMARKS
	DRILL PIPE CASING	ANNULUS	TOTAL FLUID	Pumped Per Time Period	RATE Bbbs Min.	
11:30 AM						Arrive on location 5:41 P.M. Rig up
1:30 PM						Hookup & Break Circ
2:15 PM						Pressure Test to 2000
2:17 PM			10		2 1/2	Pump 10 bbls H ₂ O
2:23 PM			37.6		5	Start cement
2:36 PM						Release Plug
2:38 PM					6	Start Pump
2:58 PM						Lead Plug
3:00 PM						Release & float Held
5						Finished

unit petroleum
Loudenback 18-2-H



Job Started On: 05/22/2014 @ 1:56:31 PM