



## DRILL STEM TEST REPORT

Prepared For: **F.G.Holl Company L.L.C.**

9431 East Central Suite 100  
Wichita, Kansas 67206-2563

ATTN: Ryan Greenbaum

**Nicholson/Schmidt Un**

**28-20s-15w**

Start Date: 2012.10.05 @ 00:00:00

End Date: 2012.10.05 @ 00:00:00

Job Ticket #: 17759                      DST #: 2

Superior Testers Enterprises LLC  
PO Box 138 Great Bend KS 67530  
1-800-792-6902

Printed: 2012.10.05 @ 11:54:37



# DRILL STEM TEST REPORT

F.G.Holl Company L.L.C.

**28-20s-15w**

9431 East Central Suite 100  
Wichita, Kansas 67206-2563

**Nicholson/Schmidt Un**

Job Ticket: 17759

**DST#: 2**

ATTN: Ryan Greenbaum

Test Start: 2012.10.05 @ 00:00:00

## GENERAL INFORMATION:

Formation: **Conglomerater**

Deviated: No Whipstock: ft (KB)

Time Tool Opened: 00:00:00

Time Test Ended: 00:00:00

Test Type: Conventional Bottom Hole (Initial)

Tester: Gene Budig

Unit No: 3335

**Interval: 3816.00 ft (KB) To 3824.00 ft (KB) (TVD)**

Reference Elevations: 2032.00 ft (KB)

Total Depth: 3824.00 ft (KB) (TVD)

2024.00 ft (CF)

Hole Diameter: 7.88 inches Hole Condition: Fair

KB to GR/CF: 8.00 ft

**Serial #: 6839 Outside**

Press @ RunDepth: 68.42 psia @ 3821.00 ft (KB)

Capacity: 5000.00 psia

Start Date: 2012.10.05 End Date: 2012.10.05

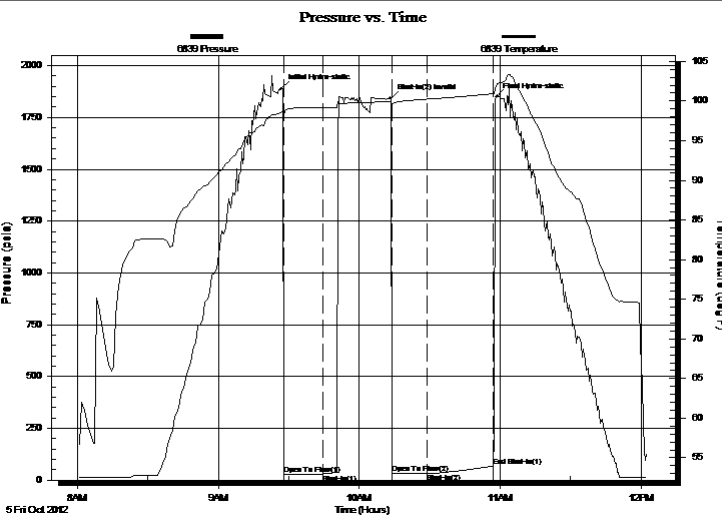
Last Calib.: 2012.10.05

Start Time: 08:00:00 End Time: 12:02:23

Time On Btm: 2012.10.05 @ 09:26:53

Time Off Btm: 2012.10.05 @ 10:58:23

**TEST COMMENT:** 1st Opening 15 Minutes Weak surface blow for 12 minutes and died  
1st Shut-In 30 Minutes-No blow back  
2nd Opening 15 Minutes -No blow o blow back



## PRESSURE SUMMARY

Time (Min.)	Pressure (psia)	Temp (deg F)	Annotation
0	1887.06	98.56	Initial Hydro-static
1	28.54	98.17	Open To Flow (1)
18	29.57	99.16	Shut-In(1)
47	1841.57	99.96	Shut-In(2) Invalid
47	30.59	99.47	Open To Flow (2)
62	31.07	100.24	Shut-In(2)
90	68.42	100.91	End Shut-In(1)
92	1848.18	101.80	Final Hydro-static

## Recovery

Length (ft)	Description	Volume (bbl)
20.00	Drill Mud	0.28

## Gas Rates

	Choke (inches)	Pressure (psia)	Gas Rate (Mcf/d)



# DRILL STEM TEST REPORT

F.G.Holl Company L.L.C.

**28-20s-15w**

9431 East Central Suite 100  
Wichita, Kansas 67206-2563

**Nicholson/Schmidt Un**

ATTN: Ryan Greenbaum

Job Ticket: 17759

**DST#: 2**

Test Start: 2012.10.05 @ 00:00:00

## GENERAL INFORMATION:

Formation: **Conglomerater**  
 Deviated: No Whipstock: ft (KB)  
 Time Tool Opened: 00:00:00  
 Time Test Ended: 00:00:00  
 Interval: **3816.00 ft (KB) To 3824.00 ft (KB) (TVD)**  
 Total Depth: 3824.00 ft (KB) (TVD)  
 Hole Diameter: 7.88 inches Hole Condition: Fair  
 Test Type: Conventional Bottom Hole (Initial)  
 Tester: Gene Budig  
 Unit No: 3335  
 Reference Elevations: 2032.00 ft (KB)  
 2024.00 ft (CF)  
 KB to GR/CF: 8.00 ft

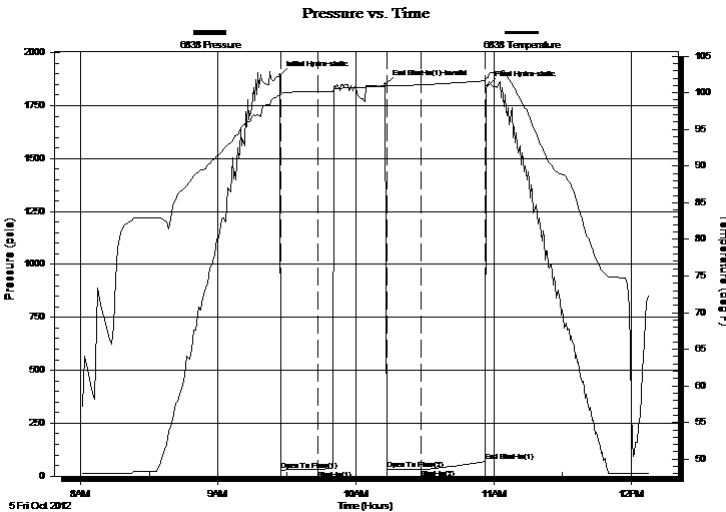
## Serial #: 6838

Inside

Press @ Run Depth: 69.84 psia @ 3820.00 ft (KB) Capacity: 5000.00 psia  
 Start Date: 2012.10.05 End Date: 2012.10.05 Last Calib.: 2012.10.05  
 Start Time: 08:00:00 End Time: 12:07:53 Time On Btm: 2012.10.05 @ 09:26:53  
 Time Off Btm: 2012.10.05 @ 10:57:23

TEST COMMENT: 1st Opening 15 Minutes Weak surface blow for 12 minutes and died  
 1st Shut-In 30 Minutes-No blow back  
 2nd Opening 15 Minutes -No blow o blow back

## PRESSURE SUMMARY



Time (Min.)	Pressure (psia)	Temp (deg F)	Annotation
0	1893.88	99.69	Initial Hydro-static
1	28.97	99.78	Open To Flow (1)
17	29.66	100.14	Shut-In(1)
46	1851.48	100.92	End Shut-In(1)-Invalid
47	31.00	100.95	Open To Flow (2)
62	31.39	101.09	Shut-In(2)
90	69.84	101.64	End Shut-In(1)
91	1843.88	102.11	Final Hydro-static

## Recovery

Length (ft)	Description	Volume (bbl)
20.00	Drill Mud	0.28

## Gas Rates

Choke (inches)	Pressure (psia)	Gas Rate (Mcf/d)



# DRILL STEM TEST REPORT

**TOOL DIAGRAM**

F.G.Holl Company L.L.C.

**28-20s-15w**

9431 East Central Suite 100  
Wichita, Kansas 67206-2563

**Nicholson/Schmidt Un**

Job Ticket: 17759

**DST#: 2**

ATTN: Ryan Greenbaum

Test Start: 2012.10.05 @ 00:00:00

## Tool Information

Drill Pipe:	Length: 3817.00 ft	Diameter: 3.80 inches	Volume: 53.54 bbl	Tool Weight: 2000.00 lb
Heavy Wt. Pipe:	Length: 0.00 ft	Diameter: 0.00 inches	Volume: 0.00 bbl	Weight set on Packer: 20000.00 lb
Drill Collar:	Length: 0.00 ft	Diameter: 0.00 inches	Volume: 0.00 bbl	Weight to Pull Loose: 65000.00 lb
			<u>Total Volume: 53.54 bbl</u>	Tool Chased 0.00 ft
Drill Pipe Above KB:	30.00 ft			String Weight: Initial 44000.00 lb
Depth to Top Packer:	3816.00 ft			Final 44000.00 lb
Depth to Bottom Packer:	ft			
Interval between Packers:	8.00 ft			
Tool Length:	37.00 ft			
Number of Packers:	2	Diameter: 6.75 inches		

Tool Comments:

Tool Description	Length (ft)	Serial No.	Position	Depth (ft)	Accum. Lengths
Change Over Sub	1.00			3788.00	
Shut-In Tool	5.00			3793.00	
Hydroic Tool	5.00			3798.00	
Jars	6.00			3804.00	
Safety Joint	2.00			3806.00	
Packer	5.00			3811.00	29.00 Bottom Of Top Packer
Packer	5.00			3816.00	
Perforations	3.00			3819.00	
Recorder	1.00	6838	Inside	3820.00	
Recorder	1.00	6839	Outside	3821.00	
Bullnose	3.00			3824.00	8.00 Bottom Packers & Anchor

**Total Tool Length: 37.00**



# DRILL STEM TEST REPORT

## FLUID SUMMARY

F.G.Holl Company L.L.C.

**28-20s-15w**

9431 East Central Suite 100  
Wichita, Kansas 67206-2563

**Nicholson/Schmidt Un**

Job Ticket: 17759

**DST#: 2**

ATTN: Ryan Greenbaum

Test Start: 2012.10.05 @ 00:00:00

### Mud and Cushion Information

Mud Type: Gel Chem  
Mud Weight: 9.00 lb/gal  
Viscosity: 50.00 sec/qt  
Water Loss: 8.60 in<sup>3</sup>  
Resistivity: ohm.m  
Salinity: 4000.00 ppm  
Filter Cake: 1.00 inches

Cushion Type:  
Cushion Length: ft  
Cushion Volume: bbl  
Gas Cushion Type:  
Gas Cushion Pressure: psia

Oil API: deg API  
Water Salinity: ppm

### Recovery Information

Recovery Table

Length ft	Description	Volume bbl
20.00	Drill Mud	0.281

Total Length: 20.00 ft      Total Volume: 0.281 bbl

Num Fluid Samples: 0

Num Gas Bombs: 0

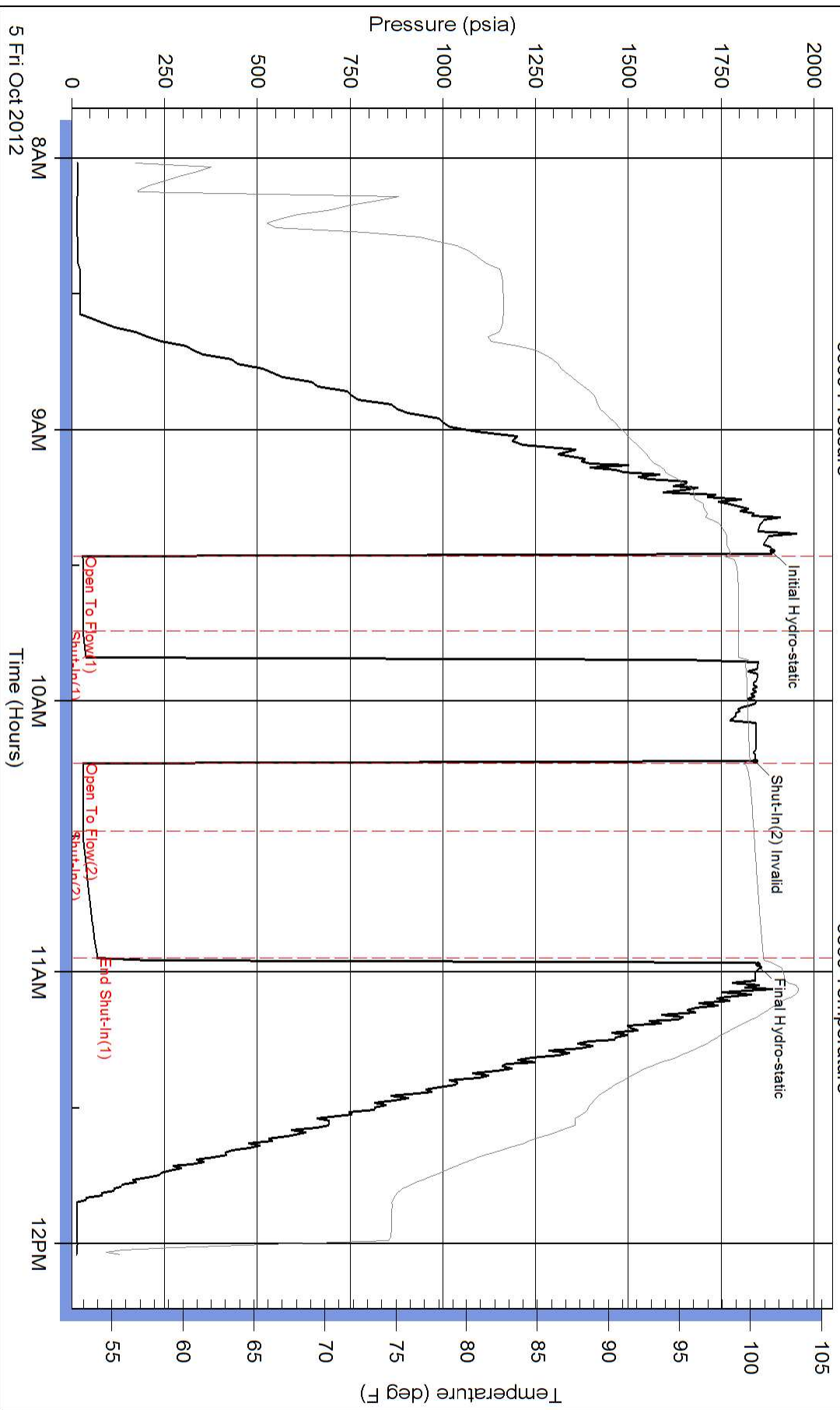
Serial #:

Laboratory Name:

Laboratory Location:

Recovery Comments:

### Pressure vs. Time



Serial #: 6838

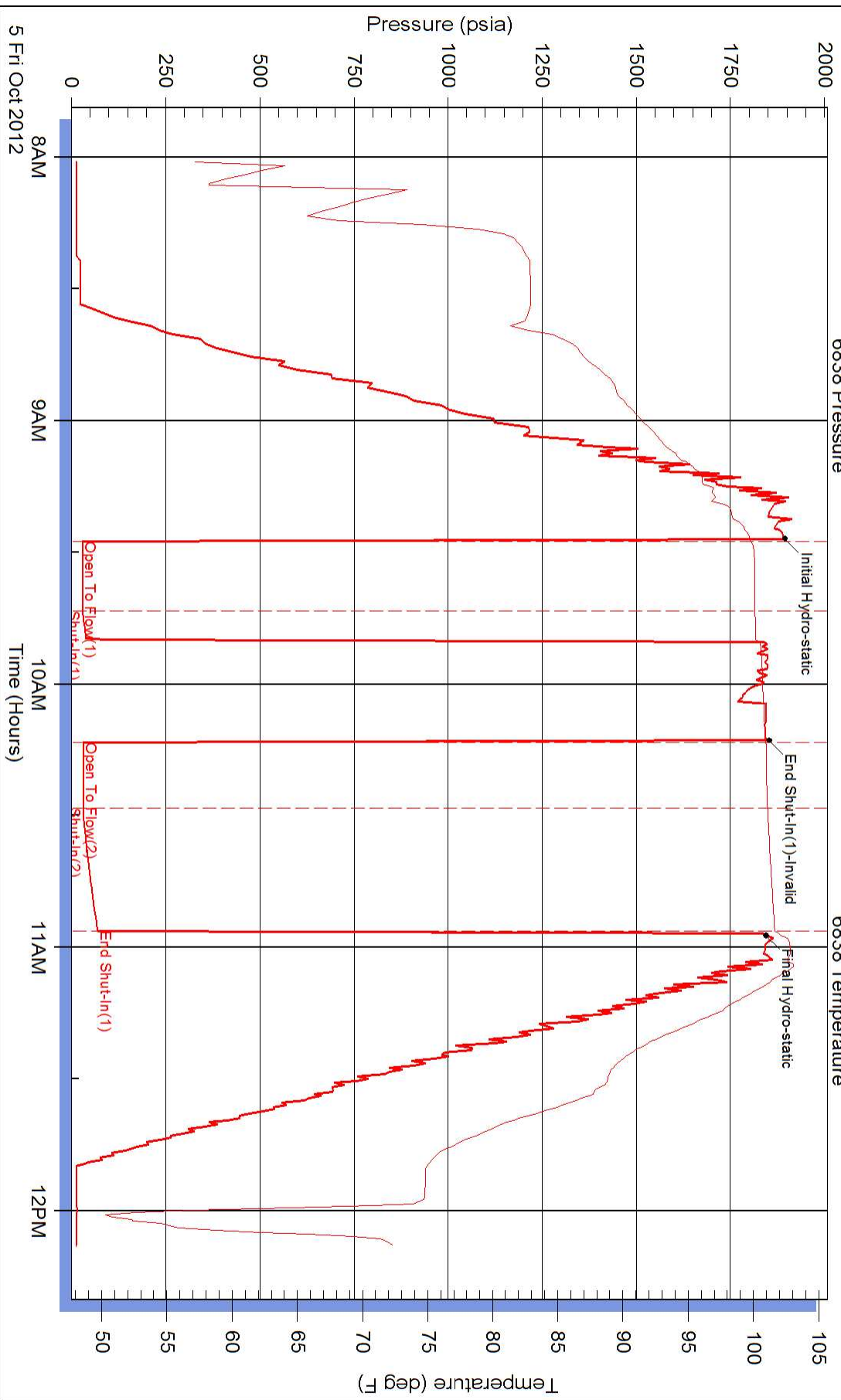
Inside

F.G.Holl Company L.L.C.

Nicholson/Schmidt Uh

DST Test Number: 2

### Pressure vs. Time



Superior Testers Enterprises LLC

Ref. No: 17759

Printed: 2012.10.05 @ 11:54:39