



DRILL STEM TEST REPORT

Prepared For: **F.G.Holl Company L.L.C.**

9431 East Central Suite 100
Wichita, Kansas 67206-2563

ATTN: Ryan Greenbaum

mAUNEY #1-6

6-21S-15W bARTON

Start Date: 2012.10.19 @ 00:00:00

End Date: 2012.10.19 @ 00:00:00

Job Ticket #: 16889 DST #: 6

Superior Testers Enterprises LLC
PO Box 138 Great Bend KS 67530
1-800-792-6902

Printed: 2012.10.19 @ 23:17:07



DRILL STEM TEST REPORT

F.G.Holl Company L.L.C.

6-21S-15W bARTON

9431 East Central Suite 100
Wichita, Kansas 67206-2563

mAUNEY #1-6

Job Ticket: 16889

DST#: 6

ATTN: Ryan Greenbaum

Test Start: 2012.10.19 @ 00:00:00

GENERAL INFORMATION:

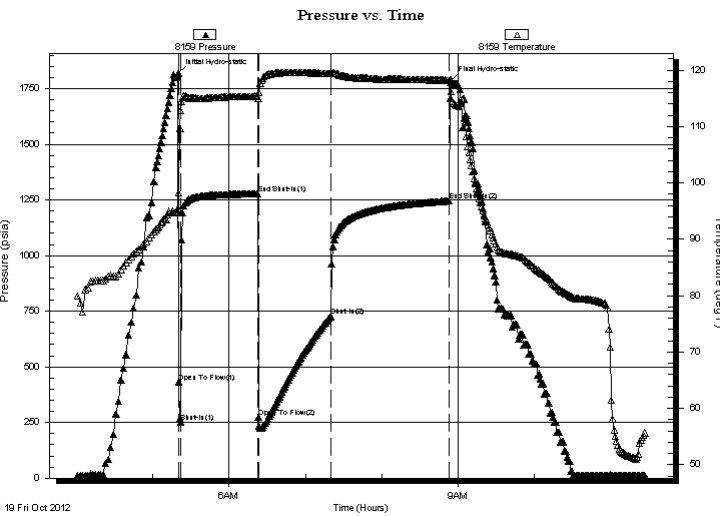
Formation: **Arbuckle**
 Deviated: No Whipstock: ft (KB)
 Test Type: Conventional Bottom Hole (Initial)
 Time Tool Opened: 00:00:00
 Tester: Gene Budig
 Time Test Ended: 00:00:00
 Unit No: 3320
 Interval: **3795.00 ft (KB) To 3805.00 ft (KB) (TVD)**
 Reference Elevations: 1966.00 ft (KB)
 Total Depth: 3805.00 ft (KB) (TVD)
 1958.00 ft (CF)
 Hole Diameter: 7.88 inches
 Hole Condition: Fair
 KB to GR/CF: 8.00 ft

Serial #: 8159

Outside

Press @ Run Depth: 1245.75 psia @ 3802.00 ft (KB) Capacity: 5000.00 psia
 Start Date: 2012.10.19 End Date: 2012.10.19 Last Calib.: 2012.10.19
 Start Time: 04:00:00 End Time: 11:27:00 Time On Btm: 2012.10.19 @ 05:20:00
 Time Off Btm: 2012.10.19 @ 08:54:00

TEST COMMENT: 1st Opening 2 Minutes-Strong blow built to the bottom of a 5 gallon bucket in 15 seconds
 1st shut-In 60 Minutes-Fair blow back
 2nd Opening 60 Minutes-Strong blow with gas to surface-see gas report
 2nd Shut-0In 90 Minutes-Fair blow back



PRESSURE SUMMARY

Time (Min.)	Pressure (psia)	Temp (deg F)	Annotation
0	1819.45	95.46	Initial Hydro-static
1	433.06	98.29	Open To Flow (1)
2	253.15	112.80	Shut-In(1)
63	1277.50	115.34	End Shut-In(1)
63	272.60	114.90	Open To Flow (2)
120	727.38	119.33	Shut-In(2)
213	1245.75	118.17	End Shut-In(2)
214	1788.02	117.84	Final Hydro-static

Recovery

Length (ft)	Description	Volume (bbl)
280.00	Clean Gassy Oil 15% Gas 85% Oil	3.93
0.00	Gravity 38 Corrected	0.00
1300.00	Salt Water Chlorides 44000	18.24

Gas Rates

	Choke (inches)	Pressure (psia)	Gas Rate (Mcf/d)
First Gas Rate	0.38	28.50	104.40
Last Gas Rate	0.38	7.00	25.64
Max. Gas Rate	0.38	28.50	104.40



DRILL STEM TEST REPORT

F.G.Holl Company L.L.C.

6-21S-15W bARTON

9431 East Central Suite 100
Wichita, Kansas 67206-2563

mAUNEY #1-6

Job Ticket: 16889

DST#: 6

ATTN: Ryan Greenbaum

Test Start: 2012.10.19 @ 00:00:00

GENERAL INFORMATION:

Formation: **Arbuckle**

Deviated: No Whipstock: ft (KB)

Time Tool Opened: 00:00:00

Time Test Ended: 00:00:00

Test Type: Conventional Bottom Hole (Initial)

Tester: Gene Budig

Unit No: 3320

Interval: 3795.00 ft (KB) To 3805.00 ft (KB) (TVD)

Reference Elevations: 1966.00 ft (KB)

Total Depth: 3805.00 ft (KB) (TVD)

1958.00 ft (CF)

Hole Diameter: 7.88 inches Hole Condition: Fair

KB to GR/CF: 8.00 ft

Serial #: 6731

Inside

Press @ Run Depth: 1244.46 psia @ 3801.00 ft (KB)

Capacity: 5000.00 psia

Start Date: 2012.10.19

End Date:

2012.10.19

Last Calib.:

2012.10.19

Start Time: 04:00:00

End Time:

11:20:30

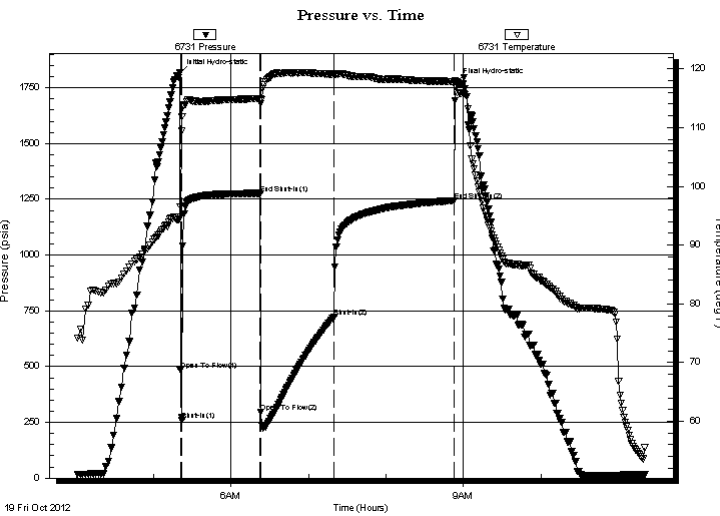
Time On Btm:

2012.10.19 @ 05:20:00

Time Off Btm:

2012.10.19 @ 08:54:30

TEST COMMENT: 1st Opening 2 Minutes-Strong blow built to the bottom of a 5 gallon bucket in 15 seconds
1st shut-in 60 Minutes-Fair blow back
2nd Opening 60 Minutes-Strong blow with gas to surface-see gas report
2nd Shut-in 90 Minutes-Fair blow back



PRESSURE SUMMARY

Time (Min.)	Pressure (psia)	Temp (deg F)	Annotation
0	1815.26	94.50	Initial Hydro-static
1	484.86	96.54	Open To Flow (1)
2	258.25	111.84	Shut-In(1)
63	1275.44	114.84	End Shut-In(1)
63	296.57	114.10	Open To Flow (2)
120	723.74	119.04	Shut-In(2)
213	1244.46	117.83	End Shut-In(2)
215	1774.96	116.82	Final Hydro-static

Recovery

Length (ft)	Description	Volume (bbl)
280.00	Clean Gassy Oil 15% Gas 85% Oil	3.93
0.00	Gravity 38 Corrected	0.00
1300.00	Salt Water Chlorides 44000	18.24

Gas Rates

	Choke (inches)	Pressure (psia)	Gas Rate (Mcf/d)
First Gas Rate	0.38	28.50	104.40
Last Gas Rate	0.38	7.00	25.64
Max. Gas Rate	0.38	28.50	104.40



DRILL STEM TEST REPORT

GAS RATES

F.G.Holl Company L.L.C.

6-21S-15W bARTON

9431 East Central Suite 100
Wichita, Kansas 67206-2563

mAUNEY #1-6

Job Ticket: 16889

DST#: 6

ATTN: Ryan Greenbaum

Test Start: 2012.10.19 @ 00:00:00

Gas Rates Information

Temperature: 59 (deg F)
Relative Density: 0.65
Z Factor: 0.8

Gas Rates Table

Flow Period	Elapsed Time	Choke (inches)	Pressure (psia)	Gas Rate (Mcf/d)
2	5	0.38	28.50	104.40
2	10	0.38	22.50	82.42
2	20	0.38	13.45	49.27
2	30	0.38	9.50	34.80
2	40	0.38	8.00	29.31
2	50	0.38	7.75	28.39
2	60	0.38	7.00	25.64



DRILL STEM TEST REPORT

FLUID SUMMARY

F.G.Holl Company L.L.C.

6-21S-15W bARTON

9431 East Central Suite 100
Wichita, Kansas 67206-2563

mAUNEY #1-6

Job Ticket: 16889

DST#: 6

ATTN: Ryan Greenbaum

Test Start: 2012.10.19 @ 00:00:00

Mud and Cushion Information

Mud Type: Gel Chem
Mud Weight: 9.00 lb/gal
Viscosity: 50.00 sec/qt
Water Loss: 9.00 in³
Resistivity: ohm.m
Salinity: 4700.00 ppm
Filter Cake: 1.00 inches

Cushion Type:
Cushion Length: ft
Cushion Volume: bbl
Gas Cushion Type:
Gas Cushion Pressure: psia

Oil API: deg API
Water Salinity: ppm

Recovery Information

Recovery Table

Length ft	Description	Volume bbl
280.00	Clean Gassy Oil 15%Gas 85%Oil	3.928
0.00	Gravity 38 Corrected	0.000
1300.00	Salt Water Chlorides 44000	18.236

Total Length: 1580.00 ft Total Volume: 22.164 bbl

Num Fluid Samples: 0

Num Gas Bombs: 0

Serial #:

Laboratory Name:

Laboratory Location:

Recovery Comments:



DRILL STEM TEST REPORT

TOOL DIAGRAM

F.G.Holl Company L.L.C.

6-21S-15W bARTON

9431 East Central Suite 100
Wichita, Kansas 67206-2563

mAUNEY #1-6

Job Ticket: 16889

DST#: 6

ATTN: Ryan Greenbaum

Test Start: 2012.10.19 @ 00:00:00

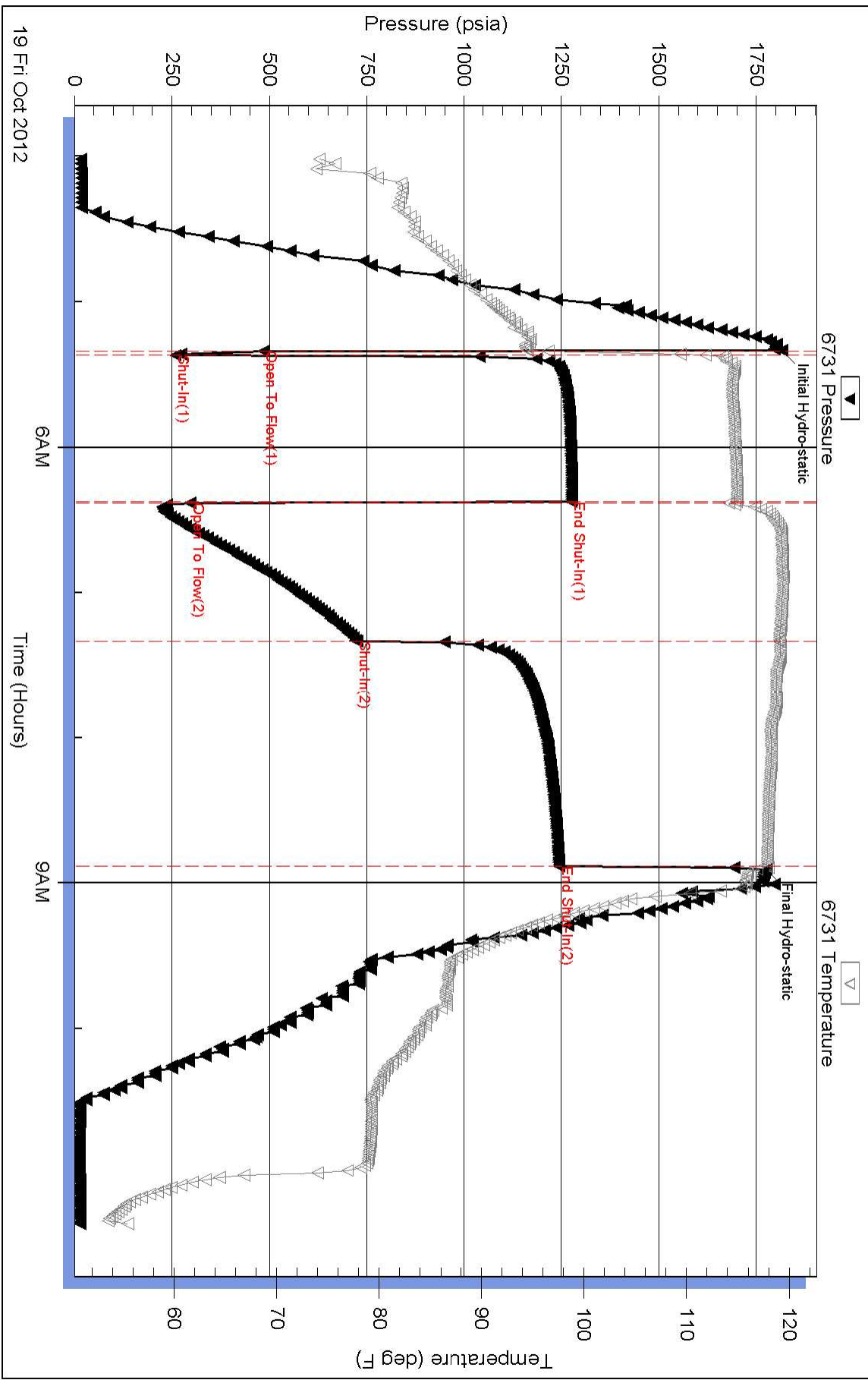
Tool Information

Drill Pipe:	Length: 3779.00 ft	Diameter: 3.80 inches	Volume: 53.01 bbl	Tool Weight: 2000.00 lb
Heavy Wt. Pipe:	Length: 0.00 ft	Diameter: 0.00 inches	Volume: 0.00 bbl	Weight set on Packer: 20000.00 lb
Drill Collar:	Length: 0.00 ft	Diameter: 0.00 inches	Volume: 0.00 bbl	Weight to Pull Loose: 52000.00 lb
			<u>Total Volume: 53.01 bbl</u>	Tool Chased 0.00 ft
Drill Pipe Above KB:	12.00 ft			String Weight: Initial 40000.00 lb
Depth to Top Packer:	3795.00 ft			Final 50000.00 lb
Depth to Bottom Packer:	ft			
Interval between Packers:	10.00 ft			
Tool Length:	38.00 ft			
Number of Packers:	1	Diameter: 6.75 inches		

Tool Comments:

Tool Description	Length (ft)	Serial No.	Position	Depth (ft)	Accum. Lengths
Shut-In Tool	5.00			3772.00	
Hydraulic Tool	5.00			3777.00	
Jars	6.00			3783.00	
Safety Joint	2.00			3785.00	
Packer	5.00			3790.00	28.00 Bottom Of Top Packer
Packer	5.00			3795.00	
Perforations	5.00			3800.00	
Recorder	1.00	6731	Inside	3801.00	
Recorder	1.00	8159	Outside	3802.00	
Bullnose	3.00			3805.00	10.00 Bottom Packers & Anchor
Total Tool Length:	38.00				

Pressure vs. Time



Pressure vs. Time

