



DRILL STEM TEST REPORT

Prepared For: **F.G Holl Company L.L.C**

9431E Central ste 100 Wichita KS
67206+2563

ATTN: Rene Husted

Axman 'A' Unit #1-23

23-17-15 Barton

Start Date: 2012.10.14 @ 00:00:00

End Date: 2012.10.14 @ 00:00:00

Job Ticket #: 16877 DST #: 3

Superior Testers Enterprises LLC
PO Box 138 Great Bend KS 67530
1-800-792-6902

Printed: 2012.10.14 @ 08:48:37



DRILL STEM TEST REPORT

F.G Holl Company L.L.C

23-17-15 Barton

9431E Central ste 100 Wichita KS 67206+2563

Axman 'A' Unit #1-23

ATTN: Rene Husted

Job Ticket: 16877

DST#: 3

Test Start: 2012.10.14 @ 00:00:00

GENERAL INFORMATION:

Formation: **Kansas City "H & I"**

Deviated: No Whipstock: ft (KB)

Time Tool Opened: 00:00:00

Time Test Ended: 00:00:00

Test Type: Conventional Bottom Hole (Initial)

Tester: Gene Budig

Unit No: 3320

Interval: 3372.00 ft (KB) To 3418.00 ft (KB) (TVD)

Reference Elevations: 1966.00 ft (KB)

Total Depth: 3418.00 ft (KB) (TVD)

1954.00 ft (CF)

Hole Diameter: 7.88 inches Hole Condition: Fair

KB to GR/CF: 12.00 ft

Serial #: 8525

Press @ RunDepth: 937.62 psia @ ft (KB)

Capacity: psia

Start Date: 2012.10.14

End Date:

2012.10.14

Last Calib.:

1899.12.30

Start Time: 01:30:00

End Time:

08:32:30

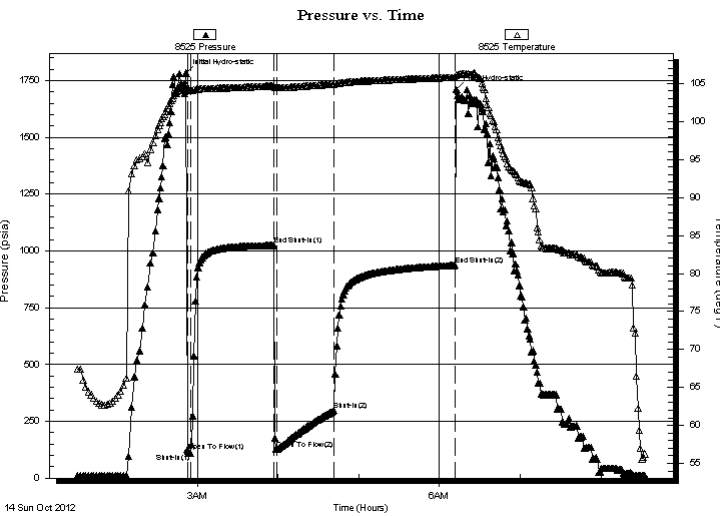
Time On Btm:

2012.10.14 @ 02:51:30

Time Off Btm:

2012.10.14 @ 06:12:30

TEST COMMENT: 1st Opening 5 Minutes-Good blow built to the bottom of a 5 gallon bucket in minute
 1st Shut-In 60 Minutes-No blow back
 2nd Openig 45 Minutes-Good blow w ith gas to surface in 20 minutes-See gas flow report
 2nd Shut-In 90 Minutes- Fair blow back



PRESSURE SUMMARY

Time (Min.)	Pressure (psia)	Temp (deg F)	Annotation
0	1783.15	104.86	Initial Hydro-static
2	118.97	104.23	Open To Flow (1)
4	108.95	104.08	Shut-In(1)
65	1025.37	104.69	End Shut-In(1)
68	127.00	104.44	Open To Flow (2)
110	298.01	104.89	Shut-In(2)
200	937.62	105.81	End Shut-In(2)
201	1711.78	106.12	Final Hydro-static

Recovery

Length (ft)	Description	Volume (bbl)
750.00	Clean Gassy Oil 20%Gas 80%Oil	10.52

Gas Rates

	Choke (inches)	Pressure (psia)	Gas Rate (Mcf/d)
First Gas Rate	0.13	10.00	3.74
Last Gas Rate	0.13	22.00	8.23
Max. Gas Rate	0.13	22.00	8.23



DRILL STEM TEST REPORT

F.G Holl Company L.L.C

23-17-15 Barton

9431E Central ste 100 Wichita KS 67206+2563

Axman 'A' Unit #1-23

ATTN: Rene Husted

Job Ticket: 16877

DST#: 3

Test Start: 2012.10.14 @ 00:00:00

GENERAL INFORMATION:

Formation: **Kansas City "H & I"**

Deviated: No Whipstock: ft (KB)

Time Tool Opened: 00:00:00

Time Test Ended: 00:00:00

Test Type: Conventional Bottom Hole (Initial)

Tester: Gene Budig

Unit No: 3320

Interval: 3372.00 ft (KB) To 3418.00 ft (KB) (TVD)

Reference Elevations: 1966.00 ft (KB)

Total Depth: 3418.00 ft (KB) (TVD)

1954.00 ft (CF)

Hole Diameter: 7.88 inches Hole Condition: Fair

KB to GR/CF: 12.00 ft

Serial #: 8159

Press @ RunDepth: 938.52 psia @ ft (KB)

Capacity: psia

Start Date: 2012.10.14

End Date: 2012.10.14

Last Calib.: 1899.12.30

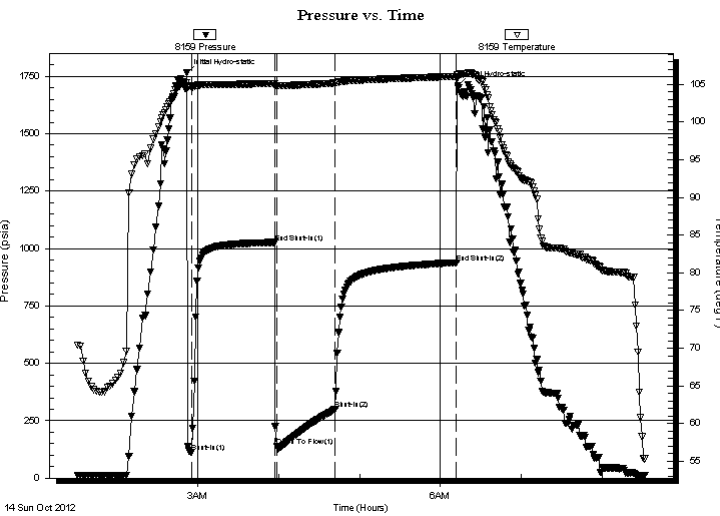
Start Time: 01:30:00

End Time: 08:32:00

Time On Btm: 2012.10.14 @ 02:52:00

Time Off Btm: 2012.10.14 @ 06:13:00

TEST COMMENT: 1st Opening 5 Minutes-Good blow built to the bottom of a 5 gallon bucket in minute
 1st Shut-In 60 Minutes-No blow back
 2nd Openig 45 Minutes-Good blow w ith gas to surface in 20 minutes-See gas flow report
 2nd Shut-In 90 Minutes- Fair blow back



PRESSURE SUMMARY

Time (Min.)	Pressure (psia)	Temp (deg F)	Annotation
0	1763.34	105.24	Initial Hydro-static
4	113.90	104.66	Shut-In(1)
65	1026.35	105.16	End Shut-In(1)
67	139.40	104.87	Open To Flow (1)
110	299.89	105.18	Shut-In(2)
200	938.52	106.08	End Shut-In(2)
201	1708.08	106.33	Final Hydro-static

Recovery

Length (ft)	Description	Volume (bbl)
750.00	Clean Gassy Oil 20%Gas 80%Oil	10.52

Gas Rates

	Choke (inches)	Pressure (psia)	Gas Rate (Mcf/d)
First Gas Rate	0.13	10.00	3.74
Last Gas Rate	0.13	22.00	8.23
Max. Gas Rate	0.13	22.00	8.23



DRILL STEM TEST REPORT

TOOL DIAGRAM

F.G Holl Company L.L.C

23-17-15 Barton

9431E Central ste 100 Wichita KS 67206+2563

Axman 'A' Unit #1-23

Job Ticket: 16877

DST#: 3

ATTN: Rene Husted

Test Start: 2012.10.14 @ 00:00:00

Tool Information

Drill Pipe:	Length: 3376.00 ft	Diameter: 3.80 inches	Volume: 47.36 bbl	Tool Weight: 2000.00 lb
Heavy Wt. Pipe:	Length: 0.00 ft	Diameter: 0.00 inches	Volume: 0.00 bbl	Weight set on Packer: 20000.00 lb
Drill Collar:	Length: 0.00 ft	Diameter: 0.00 inches	Volume: 0.00 bbl	Weight to Pull Loose: 65000.00 lb
			<u>Total Volume: 47.36 bbl</u>	Tool Chased 0.00 ft
Drill Pipe Above KB:	32.00 ft			String Weight: Initial 49000.00 lb
Depth to Top Packer:	3372.00 ft			Final 54000.00 lb
Depth to Bottom Packer:	ft			
Interval between Packers:	46.00 ft			
Tool Length:	74.00 ft			
Number of Packers:	2	Diameter: 6.75 inches		

Tool Comments:

Tool Description	Length (ft)	Serial No.	Position	Depth (ft)	Accum. Lengths
------------------	-------------	------------	----------	------------	----------------

Shut-In Tool	5.00			3349.00	
Hydraulic Tool	5.00			3354.00	
Jars	6.00			3360.00	
Safety Joint	2.00			3362.00	
Packer	5.00			3367.00	28.00 Bottom Of Top Packer
Packer	5.00			3372.00	
Perforations	41.00			3413.00	
Recorder	1.00	8525	Inside	3414.00	
Recorder	1.00	8159	Outside	3415.00	
Bullnose	3.00			3418.00	46.00 Bottom Packers & Anchor
Total Tool Length:	74.00				



DRILL STEM TEST REPORT

FLUID SUMMARY

F.G Holl Company L.L.C

23-17-15 Barton

9431E Central ste 100 Wichita KS 67206+2563

Axman 'A' Unit #1-23

Job Ticket: 16877

DST#: 3

ATTN: Rene Husted

Test Start: 2012.10.14 @ 00:00:00

Mud and Cushion Information

Mud Type: Gel Chem

Cushion Type:

Oil API:

deg API

Mud Weight: 10.00 lb/gal

Cushion Length:

ft

Water Salinity:

ppm

Viscosity: 59.00 sec/qt

Cushion Volume:

bbbl

Water Loss: 9.20 in³

Gas Cushion Type:

Resistivity: ohm.m

Gas Cushion Pressure:

psia

Salinity: 6300.00 ppm

Filter Cake: 1.00 inches

Recovery Information

Recovery Table

Length ft	Description	Volume bbl
750.00	Clean Gassy Oil 20%Gas 80%Oil	10.521

Total Length: 750.00 ft Total Volume: 10.521 bbl

Num Fluid Samples: 0

Num Gas Bombs: 0

Serial #:

Laboratory Name:

Laboratory Location:

Recovery Comments:



DRILL STEM TEST REPORT

GAS RATES

F.G Holl Company L.L.C

23-17-15 Barton

9431E Central ste 100 Wichita KS 67206+2563

Axman 'A' Unit #1-23

Job Ticket: 16877

DST#: 3

ATTN: Rene Husted

Test Start: 2012.10.14 @ 00:00:00

Gas Rates Information

Temperature: 59 (deg F)
Relative Density: 0.65
Z Factor: 0.8

Gas Rates Table

Flow Period	Elapsed Time	Choke (inches)	Pressure (psia)	Gas Rate (Mcf/d)
2	20	0.13	10.00	3.74
2	30	0.13	15.00	5.61
2	40	0.13	20.00	7.49
2	45	0.13	22.00	8.23

