



DRILL STEM TEST REPORT

Prepared For: **F.G Holl Company L.L.C**

9431E Central ste 100 Wichita KS
67206+2563

ATTN: Rene Husted

Axman 'A' Unit #1-23

23-17-15 Barton

Start Date: 2012.10.15 @ 00:00:00

End Date: 2012.10.15 @ 00:00:00

Job Ticket #: 16881 DST #: 5

Superior Testers Enterprises LLC
PO Box 138 Great Bend KS 67530
1-800-792-6902

Printed: 2012.10.15 @ 13:33:43

F.G Holl Company L.L.C

23-17-15 Barton

Axman 'A' Unit #1-23

DST # 5

Kansas City "L"

2012.10.15



DRILL STEM TEST REPORT

F.G Holl Company L.L.C

23-17-15 Barton

9431E Central ste 100 Wichita KS 67206+2563

Axman 'A' Unit #1-23

ATTN: Rene Husted

Job Ticket: 16881

DST#: 5

Test Start: 2012.10.15 @ 00:00:00

GENERAL INFORMATION:

Formation: **Kansas City "L"**

Deviated: No Whipstock: ft (KB)

Time Tool Opened: 00:00:00

Time Test Ended: 00:00:00

Test Type: Conventional Bottom Hole (Initial)

Tester: Gene Budig

Unit No: 3320

Interval: 3435.00 ft (KB) To 3472.00 ft (KB) (TVD)

Reference Elevations: 1966.00 ft (KB)

Total Depth: 3472.00 ft (KB) (TVD)

1954.00 ft (CF)

Hole Diameter: 7.88 inches Hole Condition: Fair

KB to GR/CF: 12.00 ft

Serial #: 6731 Outside

Press @ RunDepth: 69.17 psia @ 6637.00 ft (KB)

Capacity: 5000.00 psia

Start Date: 2012.10.15

End Date: 2012.10.15

Last Calib.: 2012.10.15

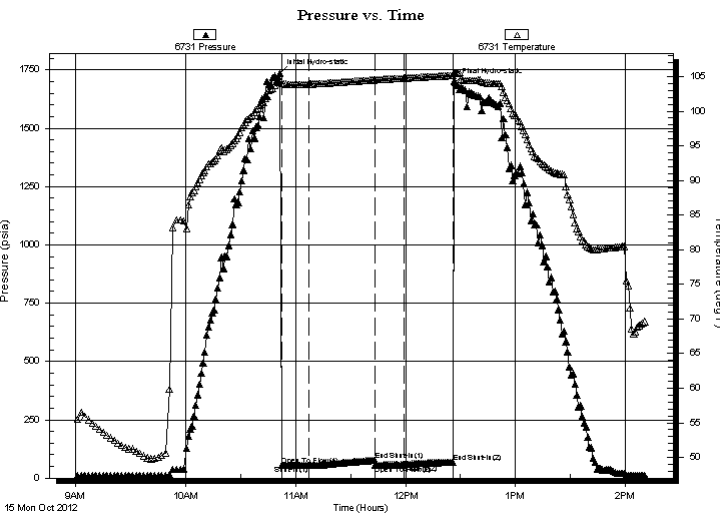
Start Time: 09:00:00

End Time: 14:10:30

Time On Btm: 2012.10.15 @ 10:51:30

Time Off Btm: 2012.10.15 @ 12:27:00

TEST COMMENT: 1st Opening 15 Minutes Weak blow for 7 minutes and died
 1st Shut-In 30 Minutes-No blow back
 2nd Opening 15 Minutes-No blow -flushed tool-good surge-no help
 2nd Shut-In 30 Minutes-No blow back



PRESSURE SUMMARY

Time (Min.)	Pressure (psia)	Temp (deg F)	Annotation
0	1735.78	104.50	Initial Hydro-static
1	54.95	104.02	Open To Flow (1)
16	55.15	103.90	Shut-In(1)
52	77.02	104.52	End Shut-In(1)
52	55.74	104.52	Open To Flow (2)
68	58.62	104.77	Shut-In(2)
95	69.17	105.16	End Shut-In(2)
96	1694.31	105.42	Final Hydro-static

Recovery

Length (ft)	Description	Volume (bbl)
20.00	Oil Spotted Mud	0.28

Gas Rates

Choke (inches)	Pressure (psia)	Gas Rate (Mcf/d)



DRILL STEM TEST REPORT

F.G Holl Company L.L.C

23-17-15 Barton

9431E Central ste 100 Wichita KS 67206+2563

Axman 'A' Unit #1-23

ATTN: Rene Husted

Job Ticket: 16881

DST#: 5

Test Start: 2012.10.15 @ 00:00:00

GENERAL INFORMATION:

Formation: **Kansas City "L"**

Deviated: No Whipstock: ft (KB)

Time Tool Opened: 00:00:00

Time Test Ended: 00:00:00

Test Type: Conventional Bottom Hole (Initial)

Tester: Gene Budig

Unit No: 3320

Interval: **3435.00 ft (KB) To 3472.00 ft (KB) (TVD)**

Reference Elevations: 1966.00 ft (KB)

Total Depth: 3472.00 ft (KB) (TVD)

1954.00 ft (CF)

Hole Diameter: 7.88 inches Hole Condition: Fair

KB to GR/CF: 12.00 ft

Serial #: 8159 Inside

Press @ RunDepth: 69.44 psia @ 6636.00 ft (KB)

Capacity: 5000.00 psia

Start Date: 2012.10.15 End Date: 2012.10.15

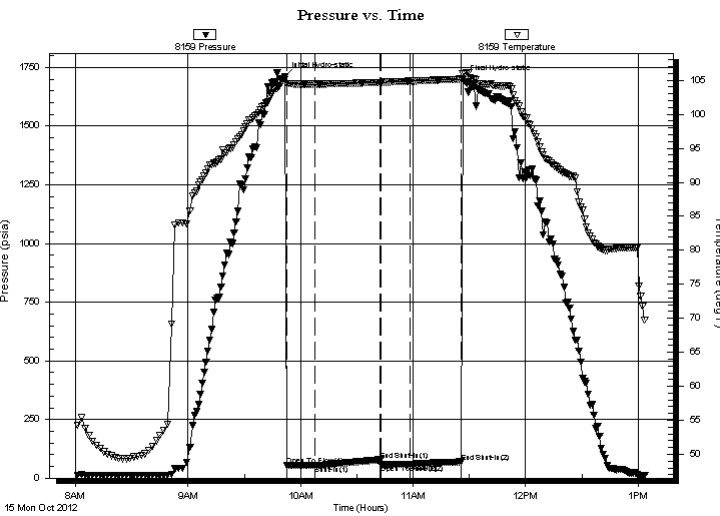
Last Calib.: 2012.10.15

Start Time: 08:00:00 End Time: 13:04:00

Time On Btm: 2012.10.15 @ 09:51:30

Time Off Btm: 2012.10.15 @ 11:26:30

TEST COMMENT: 1st Opening 15 Minutes Weak blow for 7 minutes and died
 1st Shut-In 30 Minutes-No blow back
 2nd Opening 15 Minutes-No blow -flushed tool-good surge-no help
 2nd Shut-In 30 Minutes-No blow back



PRESSURE SUMMARY

Time (Min.)	Pressure (psia)	Temp (deg F)	Annotation
0	1709.03	105.04	Initial Hydro-static
1	55.00	104.56	Open To Flow (1)
16	55.94	104.43	Shut-In(1)
51	78.05	104.70	End Shut-In(1)
52	57.55	104.69	Open To Flow (2)
67	58.83	104.87	Shut-In(2)
94	69.44	105.17	End Shut-In(2)
95	1698.38	105.90	Final Hydro-static

Recovery

Length (ft)	Description	Volume (bbl)
20.00	Oil Spotted Mud	0.28

Gas Rates

Choke (inches)	Pressure (psia)	Gas Rate (Mcf/d)



DRILL STEM TEST REPORT

FLUID SUMMARY

F.G Holl Company L.L.C

23-17-15 Barton

9431E Central ste 100 Wichita KS 67206+2563

Axman 'A' Unit #1-23

Job Ticket: 16881

DST#: 5

ATTN: Rene Husted

Test Start: 2012.10.15 @ 00:00:00

Mud and Cushion Information

Mud Type: Gel Chem

Cushion Type:

Oil API:

deg API

Mud Weight: 9.00 lb/gal

Cushion Length:

ft

Water Salinity:

ppm

Viscosity: 48.00 sec/qt

Cushion Volume:

bbbl

Water Loss: 8.80 in³

Gas Cushion Type:

Resistivity: ohm.m

Gas Cushion Pressure:

psia

Salinity: 62000.00 ppm

Filter Cake: 1.00 inches

Recovery Information

Recovery Table

Length ft	Description	Volume bbl
20.00	Oil Spotted Mud	0.281

Total Length: 20.00 ft Total Volume: 0.281 bbl

Num Fluid Samples: 0

Num Gas Bombs: 0

Serial #:

Laboratory Name:

Laboratory Location:

Recovery Comments:



DRILL STEM TEST REPORT

TOOL DIAGRAM

F.G Holl Company L.L.C

23-17-15 Barton

9431E Central ste 100 Wichita KS 67206+2563

Axman 'A' Unit #1-23

Job Ticket: 16881

DST#: 5

ATTN: Rene Husted

Test Start: 2012.10.15 @ 00:00:00

Tool Information

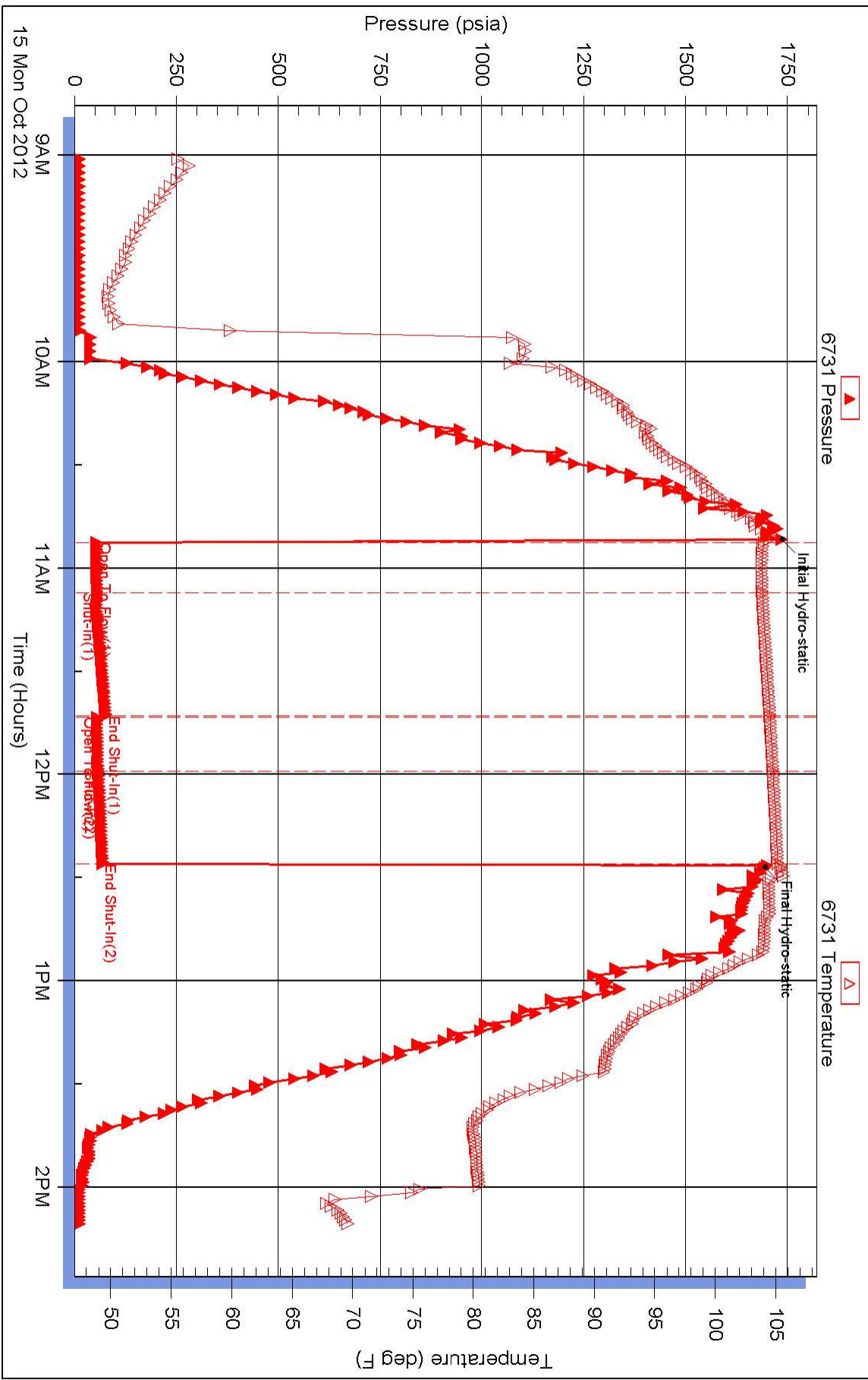
Drill Pipe:	Length: 3438.00 ft	Diameter: 3.80 inches	Volume: 48.23 bbl	Tool Weight: 2000.00 lb
Heavy Wt. Pipe:	Length: 0.00 ft	Diameter: 0.00 inches	Volume: 0.00 bbl	Weight set on Packer: 20000.00 lb
Drill Collar:	Length: 0.00 ft	Diameter: 0.00 inches	Volume: 0.00 bbl	Weight to Pull Loose: 55000.00 lb
			<u>Total Volume: 48.23 bbl</u>	Tool Chased 0.00 ft
Drill Pipe Above KB:	31.00 ft			String Weight: Initial 50000.00 lb
Depth to Top Packer:	3435.00 ft			Final 50000.00 lb
Depth to Bottom Packer:	ft			
Interval between Packers:	3205.00 ft			
Tool Length:	3233.00 ft			
Number of Packers:	2	Diameter: 6.75 inches		

Tool Comments:

Tool Description	Length (ft)	Serial No.	Position	Depth (ft)	Accum. Lengths
------------------	-------------	------------	----------	------------	----------------

Shut-In Tool	5.00			3412.00	
Hydraulic Tool	5.00			3417.00	
Jars	6.00			3423.00	
Safety Joint	2.00			3425.00	
Packer	5.00			3430.00	28.00 Bottom Of Top Packer
Packer	5.00			3435.00	
Perforations	3200.00			6635.00	
Recorder	1.00	8159	Inside	6636.00	
Recorder	1.00	6731	Outside	6637.00	
Bullnose	3.00			6640.00	3205.00 Bottom Packers & Anchor
Total Tool Length:	3233.00				

Pressure vs. Time



Pressure vs. Time

