

KEVIN L. KESSLER
CONSULTING PETROLEUM GEOLOGIST
(316) 522-7338

OPERATOR : MULL DRILLING CO INC.
LEASE : JONES UNIT "OWWO" WELL # : 1 - 30
LOCATION : 1778' FSL & 2580' FEL
SEC: 30 TWP : 16 S RGE : 22 W
COUNTY : NESS STATE : KANSAS

ELEVATION
KB : 2441
GL : 2432
MEASUREMENTS FROM
KB

CONTRACTOR : DUKE DRILLING RIG # 4
COMM: 10 / 27 / 2012 COMP : 11 / 01 / 2012
RTD : 4530 LOG TD : 4531
SAMPLES SAVED FROM : 3700 TO : RTD
GEOLOGICAL SUPERVISION FROM : 3700 TO : RTD
MUD UP : 3600 TYPE MUD : CHEMICAL

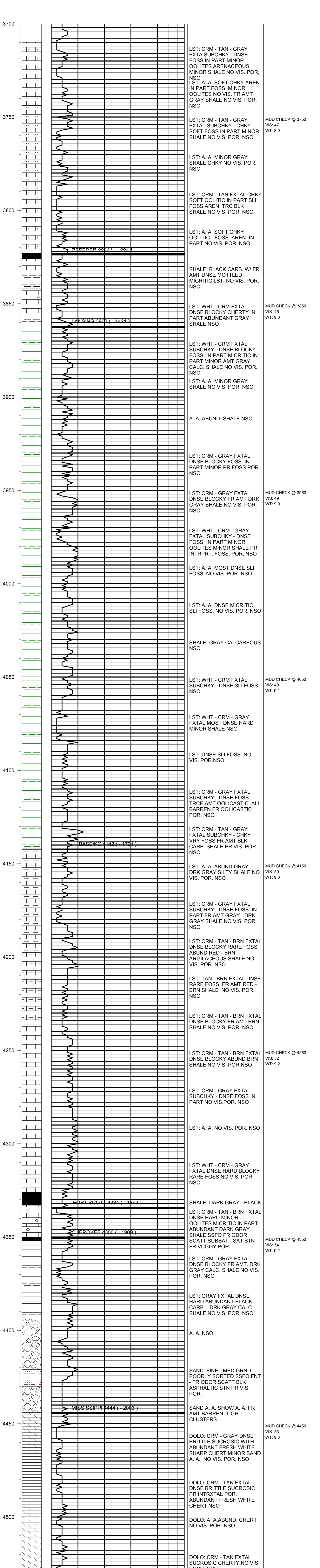
CASING RECORD
SURFACE :
8 5/8" @ 218'
PRODUCTION :
5 1/2" @ 4530'

FORMATION	TOP	LOG	DATUM	TOP	SAMPLE	DATUM	STRUCT. COMP.
HEEBNER	3823		-1382	3823		-1382	+ 04
LANSING	3862		-1421	3862		-1421	+ 04
BASE/KC	4142		-1701	4142		-1701	FLAT
FORT SCOTT	4334		-1893	4334		-1893	+ 02
CHEROKEE	4350		-1909	4350		-1909	+ 04
MISSISSIPPI	4444		-2003	4444		-2003	+ 07

ELECTRICAL SURVEYS :
CDL/CNL
DIL
MICRO
SONIC

REFERENCE WELL FOR STRUCTURAL COMPARISON :

MULL DILLING CO. INC. # 1 JONES UNIT SEC 30 - T 16 S - R 22 W NESS COUNTY KANSAS



COMMENTS:

5 1/2" PRODUCTION CASING WAS SET
 TO FURTHER EVALUATE THE PRODUCTIVITY OF THIS WELL

KEVIN L. KESSLER