

## GEOLOGIST'S REPORT DRILLING TIME AND SAMPLE LOG

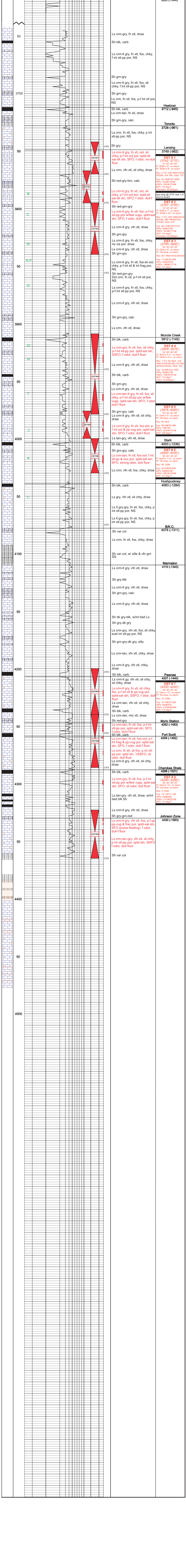
COMPANY <b>SHAKESPEARE OIL CO.</b>		ELEVATIONS <b>KG 2167'</b>	
LEASE <b>Shak 9-15</b>	FIELD <b>Chalk Buttes</b>	LOCATION <b>2560' FSL, 1800' FWL</b>	SFC <b>15' TMSP 14S RGE 32W</b>
SEC <b>15' TMSP 14S RGE 32W</b>	COUNTY <b>Logan STATE Kansas</b>	Measurements Are All From <b>KB</b>	
CONTRACTOR <b>HD Drilling Rig #2</b>	SPUD <b>7-20-14</b>	COMP <b></b>	LTD <b></b>
RTD <b></b>	RTD <b></b>	TYPE MUD <b>Chemical</b>	CONDUCTOR <b>N/A</b>
MUD UP <b>3400'</b>	SURFACE <b>8-5/8" @ 294'</b> PRODUCTION		
SAMPLES SAVED FROM <b>3600'</b> to RTD			
DRILLING TIME KEPT FROM <b>3600'</b> to RTD			
SAMPLES EXAMINED FROM <b>3600'</b> to RTD			
GEOLOGICAL SUPERVISION FROM <b>3700'</b> to RTD			
GEOLOGIST ON WELL <b>Tim Priest</b>		ELECTRICAL SURVEYS <b>CND/D/SP/P.E.</b> By: <b>Micco</b>	
FORMATION TOPS		ELECTRIC LOG	
FORMATIVE		SAMPLE	
Anhydrite			
Heebner Shale			
Lansing			
SRK			
Fort Scott			
Cherokee Shale			
Mississippian			

### REMARKS

Respectfully Submitted,

**Tim Priest**  
Petroleum Geologist

API #15-109-21306-00-00



DEPTH	REMARKS
2200	Anhydrite 2206(+561)
2227(+540)	Base/ Anhydrite
3712 (-945)	Heebner
3728 (-961)	Toronto
3749 (-982)	Lansing
3771 (-1004)	DST # 1 (3742-3770) 15'-30" 45'-60" FF: BOB in 8', no return FF: BOB in 8', no return
3772 (-1005)	Rec: 2 FO, 339 MW(70%W, 30%M), 434'Wc; Total: 773' Fps: 32-159W/167-362# SIPs: 1024W/1003# HSPs: 1850W/174# BHT: 115 deg F Chlorides: 25,000ppm
3773 (-1006)	Pipe strap @ 3770 was 141' short to board
3795 (-1028)	DST # 2 (3765-3770) 15'-30" 45'-60" FF: BOB in 7', no return FF: BOB in 20', no return
3796 (-1029)	Rec: 1 FO, 226 MW(40%W, 60%M), 280 MW(90%W, 10%M); Total: 475' Fps: 26-133W/136-221# SIPs: 282W/276# HSPs: 1819W/177# BHT: 114 deg F Chlorides: 30,000ppm
3801 (-1034)	DST # 3 (3795-3800) 30"-30" 30"-30" FF: Died in 8', no return FF: No blow, no return
3802 (-1035)	Rec: 1 FO, 226 MW(40%W, 60%M), 280 MW(90%W, 10%M); Total: 475' Fps: 18-32W/102-140# SIPs: 204W/201# HSPs: 1850W/177# BHT: 113 deg F
3812 (-1045)	Muncie Creek 3912 (-1145)
3909 (-1240)	DST # 4 (3909-3979) 30"-30" 30"-30" FF: Built to 5 in., no return FF: BOB in 20', no return
3910 (-1241)	Rec: 1 FO, 93' Mud, 124' WM(10%W, 90%M), 62' MV(60%W, 40%M); Total: 279' Fps: 35W/514# SIPs: 35W/514# HSPs: 1997W/1912# BHT: 113 deg F Chlor: 32,000ppm
3976 (-1400)	DST # 5 (3976-4000) 30"-30" 30"-30" FF: Died in 5', no return FF: No blow, no return
3977 (-1401)	Rec: 60' Mud Fps: 38-43W/45-48# SIPs: 35W/514# HSPs: 2033W/1913# BHT: 106 deg F
4003 (-1236)	Stark 4003 (-1236)
4000 (-1430)	DST # 6 (4000-4030) 30"-30" 30"-30" FF: Died in 7', no return FF: No blow, no return
4001 (-1431)	Rec: 1 FO, 93' Mud, 124' WM(10%W, 90%M), 62' MV(60%W, 40%M); Total: 279' Fps: 40-53W/58-65# SIPs: 2061W/1940# BHT: 111 deg F
4063 (-1284)	Hushpuckney 4063 (-1284)
4078 (-1311)	B/K.C. 4078 (-1311)
4110 (-1343)	Marmaton 4110 (-1343)
4207 (-1145)	Pawnee 4207 (-1145)
4200 (-4240)	DST # 7 (4200-4240) 30"-30" 30"-30" FF: Died in 12', no return FF: No blow, no return
4201 (-4241)	Rec: 10' OSM Fps: 73W/74# SIPs: 582W/51# HSPs: 2158W/206# BHT: 112 deg F
4262 (-1483)	Myric Station 4262 (-1483)
4259 (-1492)	Fort Scott 4259 (-1492)
4288 (-1521)	Cherokee Shale 4288 (-1521)
4286 (-1519)	DST # 8 (4240-4286) 30"-30" 30"-30" FF: Died in 14', no return FF: No blow, no return
4287 (-1520)	Rec: 5' OSM Fps: 15-17W/17-19# SIPs: 248W/94# HSPs: 2115W/207# BHT: 111 deg F
4330 (-1563)	Johnson Zone 4330 (-1563)