



TRILOBITE TESTING, INC.

DRILL STEM TEST REPORT

Samuel Gary Jr. and Associates, Inc.

36 11s 22w Trego

1515 Wynkoop St. Ste 700
Denver, CO 80202

Shubert 2-36

Job Ticket: 48649

DST#: 2

ATTN: Chris Mitchell

Test Start: 2012.11.10 @ 19:35:00

GENERAL INFORMATION:

Formation: **LKC " I - K "**

Deviated: No Whipstock: 2320.00 ft (KB)

Time Tool Opened: 21:50:20

Time Test Ended: 04:30:00

Test Type: Conventional Bottom Hole (Reset)

Tester: Jim Svaty

Unit No: 41

Interval: 3745.00 ft (KB) To 3821.00 ft (KB) (TVD)

Reference Elevations: 2320.00 ft (KB)

Total Depth: 3821.00 ft (KB) (TVD)

2312.00 ft (CF)

Hole Diameter: 7.88 inches Hole Condition: Fair

KB to GR/CF: 8.00 ft

Serial #: 6752 Inside

Press @ Run Depth: 182.43 psig @ 3755.00 ft (KB)

Capacity: 8000.00 psig

Start Date: 2012.11.10

End Date:

2012.11.11

Last Calib.: 2012.11.11

Start Time: 19:35:01

End Time:

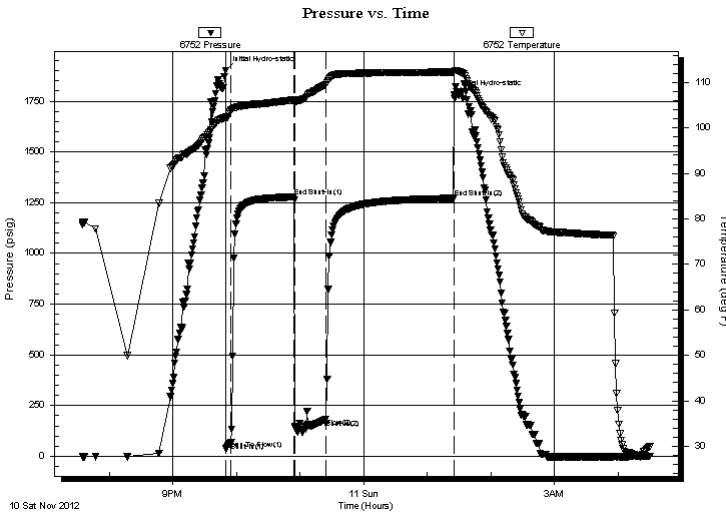
04:29:40

Time On Btm: 2012.11.10 @ 21:50:00

Time Off Btm: 2012.11.11 @ 01:25:20

TEST COMMENT: 5-IFP- BOB in 4 1/2min.
60-ISIP- Surface Blow Died in 4min.
30-FFP- BOB in 4 min.
120-FSIP- BOB in 6 1/2min. Died Back in 23min.

PRESSURE SUMMARY



Time (Min.)	Pressure (psig)	Temp (deg F)	Annotation
0	1899.97	102.41	Initial Hydro-static
1	36.50	102.16	Open To Flow (1)
5	69.40	103.97	Shut-In(1)
65	1278.52	106.12	End Shut-In(1)
65	143.25	105.96	Open To Flow (2)
95	182.43	109.46	Shut-In(2)
215	1271.86	112.31	End Shut-In(2)
216	1780.37	112.40	Final Hydro-static

Recovery

Length (ft)	Description	Volume (bbl)
250.00	Gassy OCM 40%g 25%o 35%m	3.23
125.00	GO 20%g 80%o	1.75
0.00	875 GIP	0.00

* Recovery from multiple tests

Gas Rates

Choke (inches)	Pressure (psig)	Gas Rate (Mcf/d)



**TRILOBITE
TESTING, INC.**

DRILL STEM TEST REPORT

FLUID SUMMARY

Samuel Gary Jr. and Associates, Inc.

36 11s 22w Trego

1515 Wynkoop St. Ste 700
Denver, CO 80202

Shubert 2-36

Job Ticket: 48649

DST#: 2

ATTN: Chris Mitchell

Test Start: 2012.11.10 @ 19:35:00

Mud and Cushion Information

Mud Type: Gel Chem

Cushion Type:

Oil API:

38 deg API

Mud Weight: 9.00 lb/gal

Cushion Length:

ft

Water Salinity:

ppm

Viscosity: 62.00 sec/qt

Cushion Volume:

bbbl

Water Loss: 8.78 in³

Gas Cushion Type:

Resistivity: ohm.m

Gas Cushion Pressure:

psig

Salinity: 2000.00 ppm

Filter Cake: inches

Recovery Information

Recovery Table

Length ft	Description	Volume bbl
250.00	Gassy OCM 40%g 25%o 35%m	3.234
125.00	GO 20%g 80%o	1.753
0.00	875 GIP	0.000

Total Length: 375.00 ft Total Volume: 4.987 bbl

Num Fluid Samples: 0

Num Gas Bombs: 0

Serial #:

Laboratory Name:

Laboratory Location:

Recovery Comments: SAMPLER - 2200ml CO - 625 psi - Gravity 41

Pressure vs. Time

