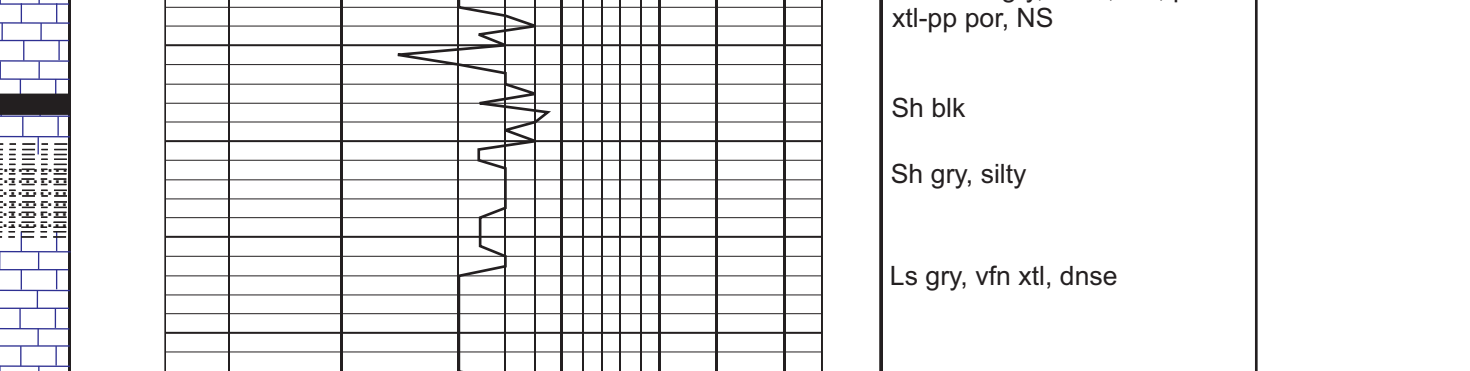


GEOLOGIST'S REPORT
DRILLING TIME AND SAMPLE LOG

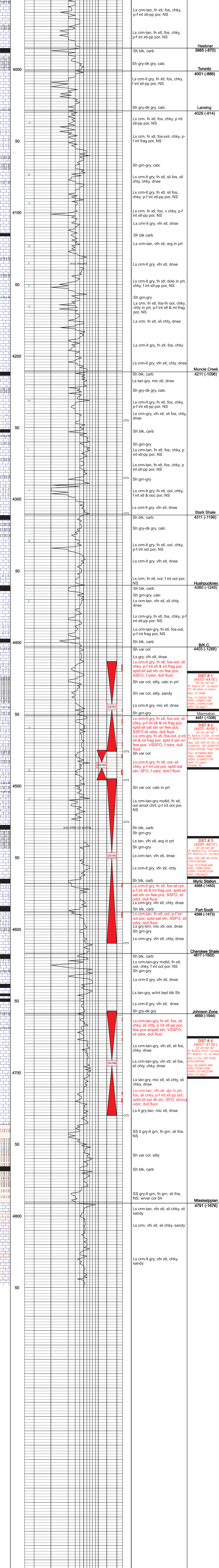
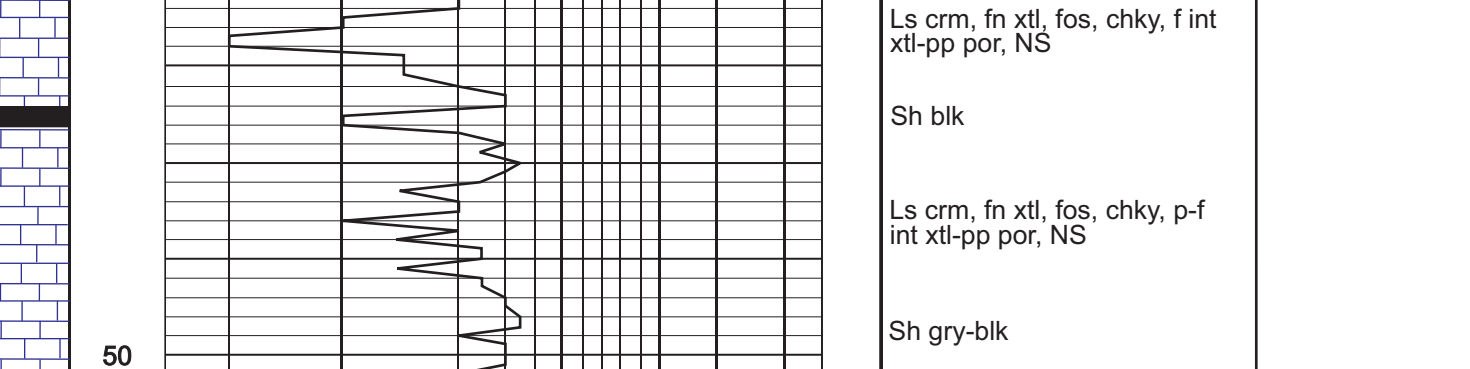
COMPANY **SHAKESPARE OIL CO.** ELEVATIONS
 LEASE **COG #2-33** KG 3115'
 FIELD **Wildcat** DF _____
 LOCATION **1000' FSL, 1300' FTL** GL 3105'
 SEC **35** TWPSP **16S** RPE **34W**
 COUNTY **Scott** STATE **Kansas** Measurements Are All From **KB**
 CONTRACTOR **HD Rig #2**
 SPUD **11-8-14** COMP _____
 RTD **3600'** LTD _____ CASINGS
 MUD UP **3600'** TYPE MUD **Chemical** CONDUCTOR **N/A**
 SAMPLES SAVED FROM **3800'** to RTD SURFACE **8-5/8" @ 267'**
 DRILLING TIME KEPT FROM **3800'** to RTD PRODUCTION _____
 SAMPLES EXAMINED FROM **3800'** to RTD ELECTRICAL SURVEYS
 GEOLOGICAL SUPERVISION FROM **3950'** to RTD CND/D/SP/P/E
 GEOLOGIST ON WELL **Tim Priest** Micro Sonic
 By: Weatherford

FORMATION TOPS ELECTRIC LOG SAMPLE
 Anhydrite
 Heebner Shale
 Lansing
 B.K.C.
 Fort Scott
 Cherokee Shale
 Mississippi

REMARKS
 Respectfully Submitted,
 Tim Priest
 Petroleum Geologist
 API #15-171-21091-00-00



LEGEND



DST # 1
 (4413'-4476')
 FF: Built to 22', no return
 Rec: 200 GPM, 30' CO, (20% G,80%O), 150' GOM(15%G, 85%O,95%N)
 SIPs: 1280#/1295#
 HSPs: 2162#/2177#
 SHIT: 111 deg F
 Gravity: 32

DST # 2
 (4475'-4496')
 FF: Built to 3 1/2in., no return
 Rec: 300 GPM, 30' CO, (20% G,80%O), 150' GOM(15%G, 85%O,95%N)
 SIPs: 1280#/1295#
 HSPs: 2162#/2177#
 SHIT: 111 deg F
 Gravity: 32

DST # 3
 (4595'-4610')
 FF: Built to 2 in., no return
 Rec: 200 GPM, 30' CO, (20% G,80%O), 150' GOM(15%G, 85%O,95%N)
 SIPs: 1280#/1295#
 HSPs: 2162#/2177#
 SHIT: 111 deg F
 Gravity: 32

DST # 4
 (4657'-4730')
 FF: Built to 12 in., no return
 Rec: 200 GPM, 30' CO, (20% G,80%O), 150' GOM(15%G, 85%O,95%N)
 SIPs: 1280#/1295#
 HSPs: 2162#/2177#
 SHIT: 111 deg F
 Gravity: 32