

Scale 1:240 (5"=100') Imperial  
Measured Depth Log

Well Name: BLACKWELDER #1-30  
API: 15-151-22444-00-00  
Location: NW SW NE NE SECTION 30 29S 11W  
License Number: 5399  
Spud Date: 11/20/2014  
Surface Coordinates: 750' FROM NORTH LINE OF SECTION  
1000' FROM EAST LINE OF SECTION  
Bottom Hole Coordinates: 750' FROM NORTH LINE OF SECTION  
1000' FROM EAST LINE OF SECTION  
Ground Elevation (ft): 1857' K.B. Elevation (ft): 1869'  
Logged Interval (ft): 2600' To: 4850' Total Depth (ft): 4850'  
Formation: ARBUCKLE  
Type of Drilling Fluid: CHEMICAL, MUD-CO  
Region: PRATT CO. KS.  
Drilling Completed: 12/2/2014  
Printed by WellSight Log Viewer from WellSight Systems 1-800-447-1534 www.WellSight.com

OPERATOR

Company: TREK AEC, LLC  
Address: 155 N MARKET STE 710  
WICHITA, KANSAS 67202  
(316) 263-5785

GEOLOGIST

Name: DAVID GOULD (LOGGER)  
Company: DMT COMPANY  
Address: 532 SUNRISE  
PRATT, KANSAS 67124  
(620) 388-2847

Comments

CCONTRACTOR:  
Fossil Drilling Inc. Rig #3

BIT RECORD:

#1, 12 1/4", Varel, RR, 0-268  
#2, 7 7/8", Varel, HE-21, 444830, 268-3555  
#3, 7 7/8", Varel, HE-29, RR, 3555-4762  
#4 7 7/8", Varel, HE-29, RR, 1436425, 3762-4850

SURVEYS:

260', 1/2 Deg.  
1016' 3/4 Deg.  
1518', 1/4 Deg.  
1994', 1 Deg.  
2499', 3/4 Deg.  
3238', 1 Deg.  
3555', 1/2 Deg.  
4083', 1/4 Deg.  
4437', 3/4 Deg.  
4850', 2 3/4 Deg. Miss run ???

DAILY STATUS: (7:00 AM)  
11/19/2014, MIRU, Spud @9:15 PM  
11/20/2014, 268' WOC  
11/21/2014, 1120' and drilling ahead

11/21/2014, 1125' and drilling ahead  
 11/22/2014, 2265' and drilling ahead  
 11/23/2014, 2910' and drilling ahead  
 11/24/2014, 3451' and drilling ahead  
 11/25/2014, 3630' and drilling ahead  
 11/26/2014, 4055' and drilling ahead  
 11/27/2014, 4209' and drilling ahead  
 11/28/2014, 4209' DST #2  
 11/29/2014, 4437' DST #3  
 11/30/2014, 4672 and drilling ahead  
 12/1/2014, 4762 DST #4  
 12/2/2014, 4850 Logging

Well Name & No.: Blackwelder #1-30 Company: Trek AEC LLC Test No.: 1 Interval Tested: 3499 - 3555

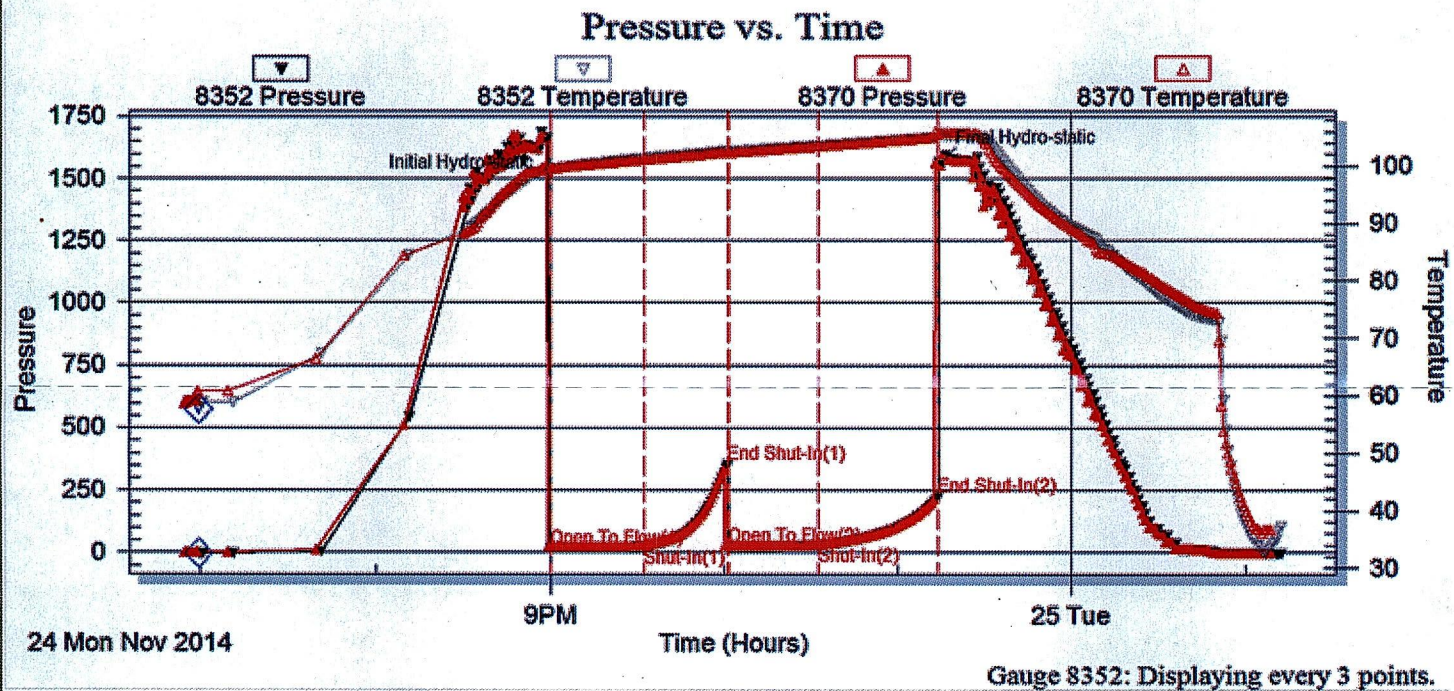
Zone Tested: Elgin Times: 30-30-30-45

Blow Description: IFP: Weak blow 3/4" degreasing ISI: No blow back FFP: Weak blow 1/4" FSI: No blow back

Rec: 25 Feet of Mud, Rec. Total: 25', BHT: 105 Gravity: N/A

Initial Hydrostatic: 1661 First Initial Flow: 18 First Final Flow: 22 Initial Shut-In: 354

Second Initial Flow: 24 Second Final Flow: 27 Final Shut-In: 224 Final Hydrostatic: 1568



Well Name & No.: Blackwelder #1-30 Company: Trek AEC LLC Test No.: 2 Interval Tested: 4196 - 4209

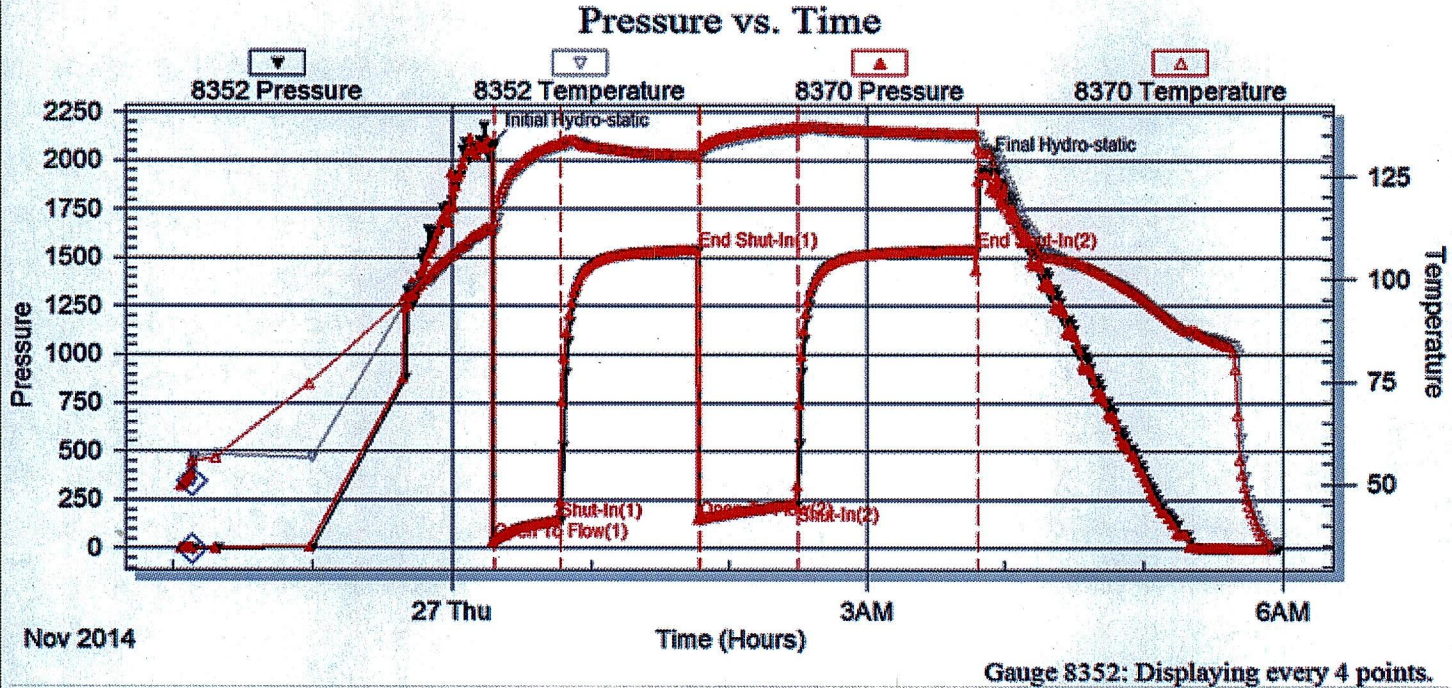
Zone Tested: Swope Times: 30-60-45-75

Blow Description: IFP: Fair to strong low BOB in 27 Min. ISI: Very weak blow (Surface). FFP: Fair to strong blow BO in 36 Min. FSI: No blow

Rec: <1 Feet of Clean Oil 54 Feet of WM with oil spcks 84% Water 16% Mud, 440 Feet of Water Rec. Total: 495', BHT: 135 Gravity: N/A

Initial Hydrostatic: 2082 First Initial Flow: 31 First Final Flow: 140 Initial Shut-In: 1537

Second Initial Flow: 146 Second Final Flow: 229 Final Shut-In: 1537 Final Hydrostatic: 1954



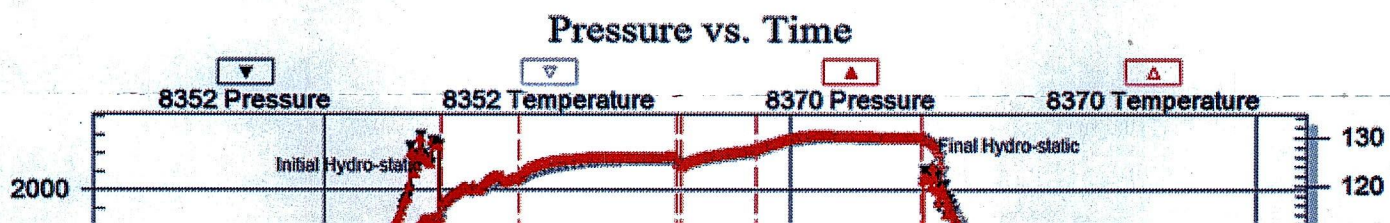
Well Name & No.: Blackwelder #1-30 Company: Trek AEC LLC Test No.: 3 Interval Tested: 4408 - 4437

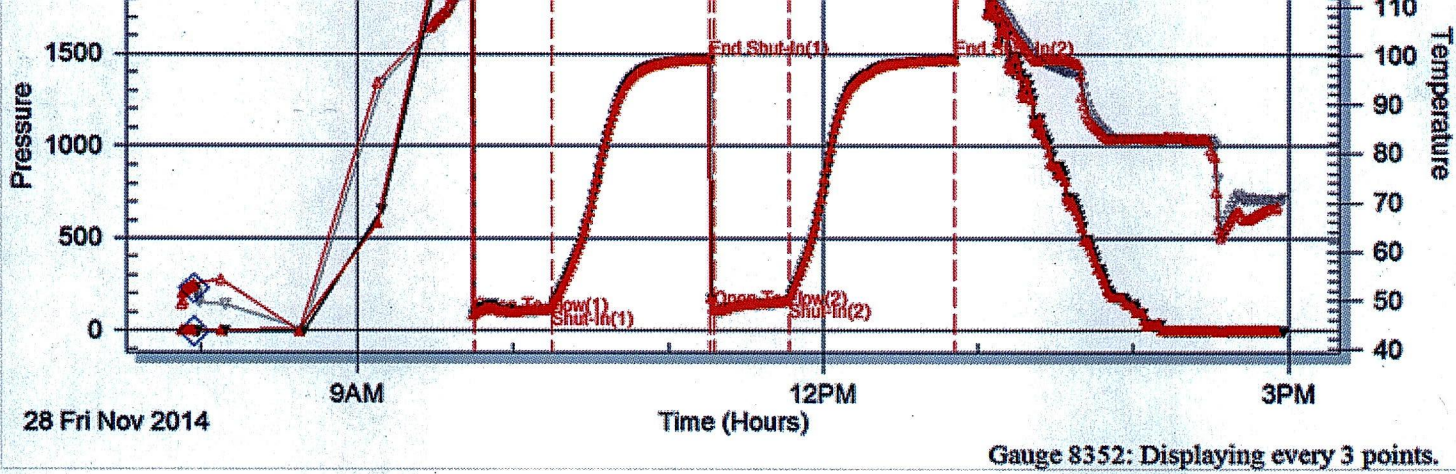
Zone Tested: Mississippi Times: 30-60-30-60

Blow Description: IFP: Strong blow bob in 8-9 min. ISI: No blow back FFP: Strong blow BOB in 10-12 sec. GTS in 11 min. FSI: Rec: 170 Feet of GOCM 30% Gas 25% Oil, 45% Mud, 200 Feet of GMCO 30% Gas 36% Oil 29% Mud, 45 Feet of Clean Oil 100% Oil Rec. Total: 415', BHT: 130 Gravity: 37.2

Initial Hydrostatic: 2267 First Initial Flow: 80 First Final Flow: 116 Initial Shut-In: 1471

Second Initial Flow: 111 Second Final Flow: 158 Final Shut-In: 1468 Final Hydrostatic: 2109





Well Name & No.: Blackwelder #1-30 Company: Trek AEC LLC Test No.: 4 Interval Tested: 4437 - 4486

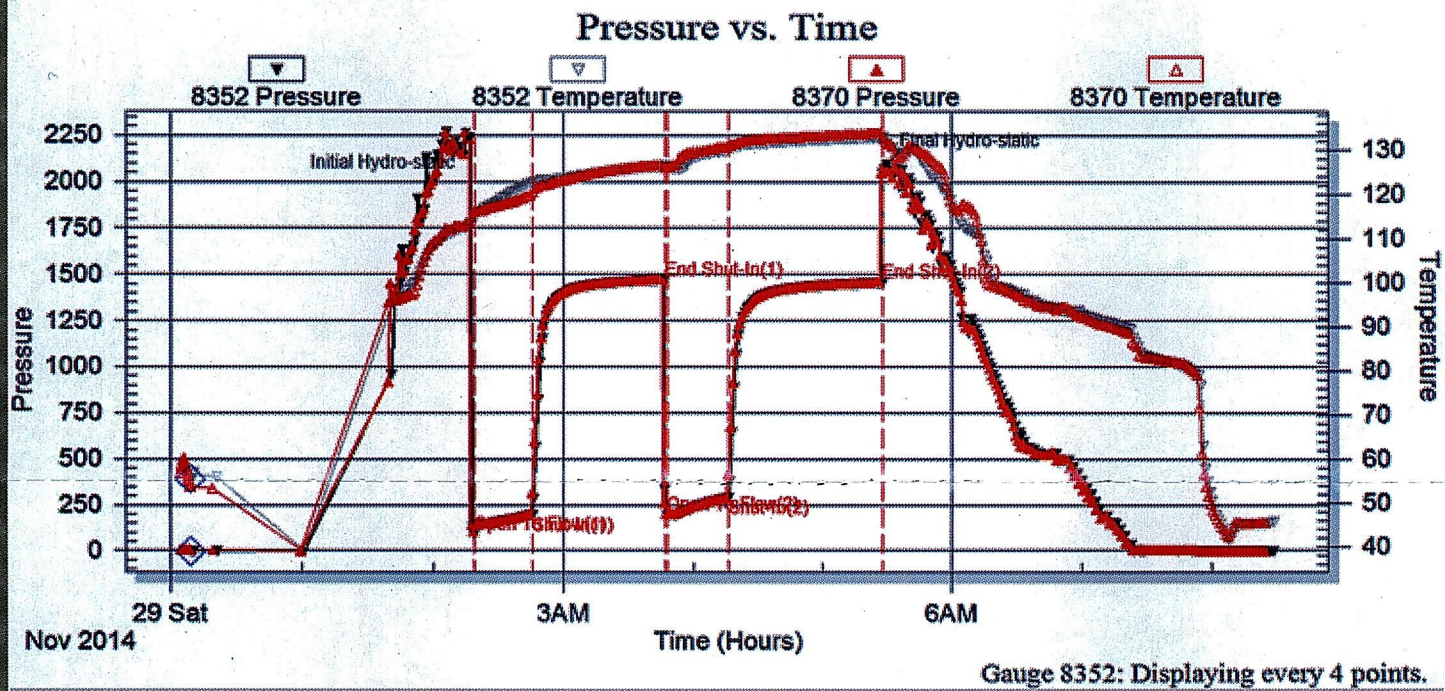
Zone Tested: Mississippi Times: 30-60-30-60

Blow Description: IFP: Strong blow BOB in 20 Sec. GTS in 12 min. ISI: Strong blow BOB FFP: Strong blow BOB FSI: Strong blow venting throughout

Rec: 985 Feet of Clean Gassy Oil 39% Gas 61% Oil, 223 Feet of GMCO 55% Gas 25% Oil 20% Mud, 62 Feet of GOCWM 14% Gas 6% Oil 26% Water 54% Mud, Rec. Total: 1270', BHT: 133 Gravity: 37.7

Initial Hydrostatic: 2234 First Initial Flow: 87 First Final Flow: 195 Initial Shut-In: 1470

Second Initial Flow: 194 Second Final Flow: 287 Final Shut-In: 1456 Final Hydrostatic: 2093



Well Name & No.: Blackwelder #1-30 Company: Trek AEC LLC Test No.: 5 Interval Tested: 4746 - 4762

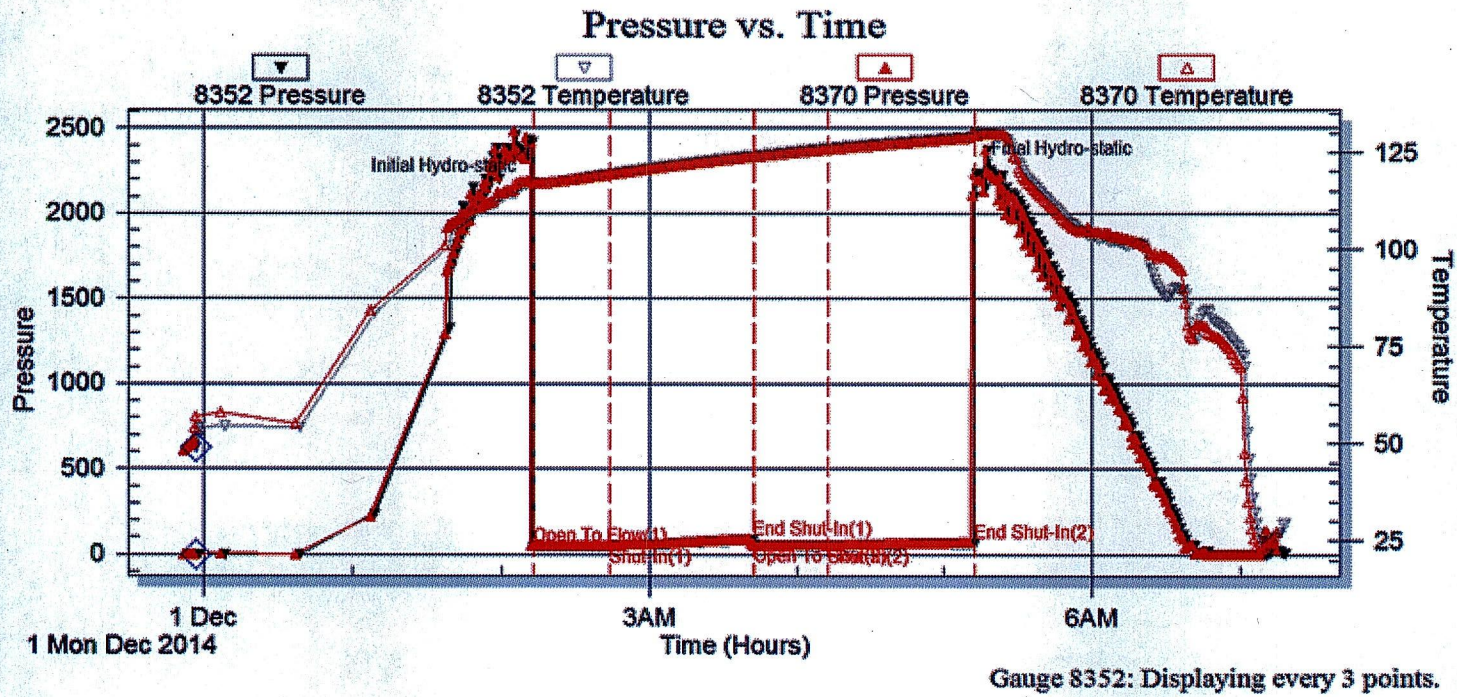
Zone Tested: Simpson Times: 30-60-30-60

Blow Description: IFP: Weak blow in diesel decreasing ISI: No blow back. FFP: No blow FSI: No blow back

Rec: 62 Feet of Mud 40% Gas 60% Oil, 809 Feet of WGOCM 30% Gas 67% Oil 1% Water 2% Mud, 186 Feet of WGOCM 100% Mud, Rec. Total: 62', BHT: 129 Gravity: N/A

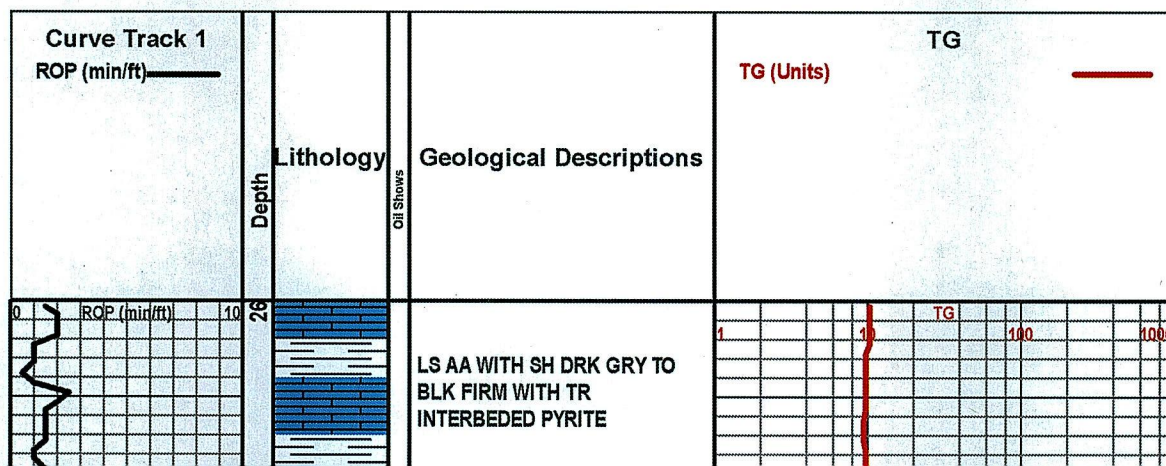
Initial Hydrostatic: 2420 First Initial Flow: 44 First Final Flow: 44 Initial Shut-In: 65

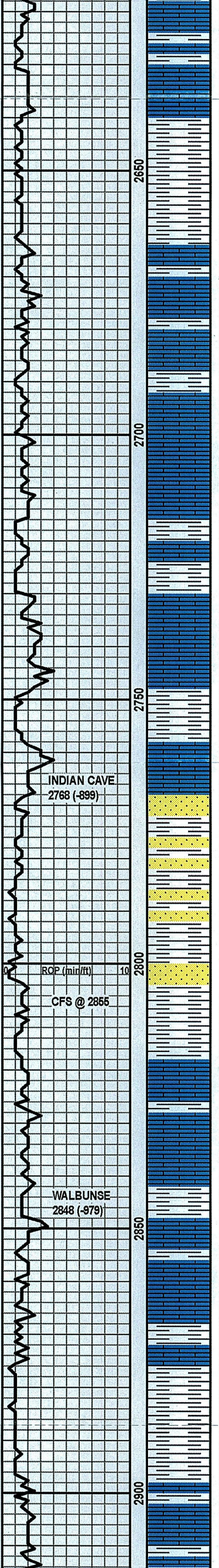
Second Initial Flow: 49 Second Final Flow: 47 Final Shut-In: 65 Final Hydrostatic: 2236



#### ROCK TYPES

Anhy	Clyst	Gyp	Mrlst	Shgy
Bent	Coal	Igne	Salt	Sltst
Brec	Congl	Lmst	Shale	Ss
Cht	Dol	Meta	Shcol	Till





SH GRN TO GRY FIRM WITH LS  
CRM TO TN TO BRN ANG F XLN  
DNS NS

LS TN TO CRM F XLN DNS

SH GRY TO DRK GRY TO BLK  
FIRM

SH GRY TO DRK GRY FIRM  
WITH LS CRM F XLN ANG DNS  
NS

SH AA WITH LS CRM TO TN F  
XLN DNS WITH INTERBEDDED  
GRY SH

AA

AA WITH LS BRN ANG F -VF  
XLN V DNS NS

LS CRM TO TN ANG F XLN DNS  
NS WITH SH GRN TO GRN FIRM

INDIAN CAVE  
2768 (-899)

SS LT GRY F-M GR SUB RD TO  
RD WELL SORTED SLIGHTLY  
MIC NS WITH SH GRY SLITY  
SOFT

SS LT GRY F-M GR SUB RD TO  
RD WELL SORTED SLIGHTLY  
MIC NS

ROP (min/ft) 10

CFS @ 2855

AA WITH SH GRY FIRM

SH AA WITH SOME SH LT GRN  
FIRM

SH AA WITH LS CRM TO TN TO  
BRN F XLN DNS NS

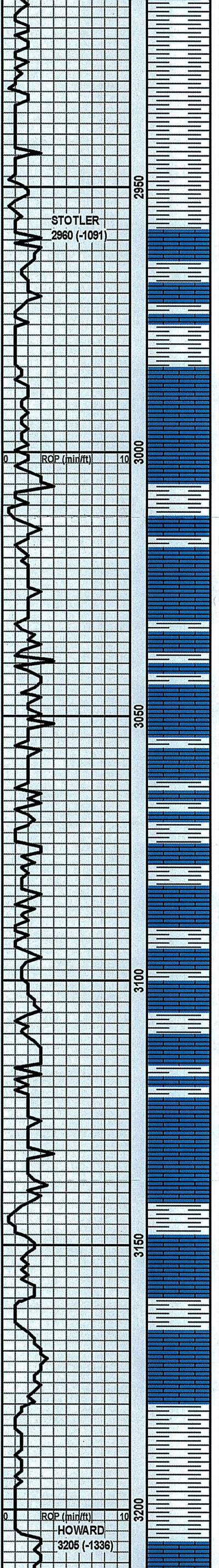
WALBUNSE  
2848 (-979)

LS & SH AA WITH LS DRK BRN  
ANG F XLN DNS NS

SH GRY TO DRK GRY FIRM  
WITH LS CRM TO TN F XLN  
ANG DNS NS

SH GRN TO GRY TO DRK GRY  
FIRM

TG 1 10 100 1000



AA

WT 9.2  
VIS 28  
YP N/C  
pH 7.0  
FIL N/C  
CHL 98,000  
LCM 0

SH AA WITH LS CRM ANG F  
XLN DNS NS

STOTLER  
2960 (-1091)

LS TN TO BRN ANG F XLN DNS  
NS

LS TN TO LT GRY ANG F XLN  
DNS NS WITH SH GRY FIRM

ROP (min/ft)

LS TN ANG F XLN DNS NS WITH  
SH GRN TO GRY FIRM

1 10 TG 100 1000

AA

LS TN TO LT BRN ANG F XLN  
DNS NS WITH SH GRY TO LT  
GRY FIRM

SH GRN TO GRY TO DRK GRY  
FIRM WITH LS TH TO BRN F  
XLN DNS NS

SH AA WITH LS OFF WHT TO  
CRM F XLN DNS SOME SLIGHTLY  
CHALKY NS

SH & LS AA

SH AA WITH LS TN TO BRN F  
XLN DNS NS

LS TN TO BRN AA WITH SH  
GRY TO BLK FIRM WITH TR  
PYRITE

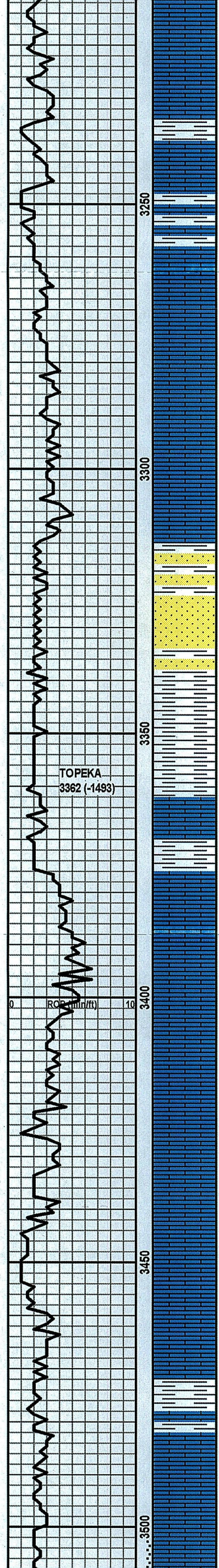
LS CRM TO TN F XLN DNS NS  
WITH SH AA

ROP (min/ft)

HOWARD  
3205 (-1336)

AA

1 10 TG 100 1000



LS OFF WHT TO CRM FXLN  
MOSTLY DNS SOME CHALKY NS  
WITH LS TN F-M XLN F POS NS

LS AA WITH LS LT GRY ANG F  
XLN DNS NS

LS TN TO BRN F XLN DNS NS

LS BRN TO LT GRY F XLN DNS  
NS  
LS TN TO BRN ANG F XLN DNS  
NS

SS F-VF GR SUB RD SLIGHTLY  
FRI SHALY NS WITH SH GRY  
FIRM SOME SILTY

AA MOSTLY SH

LS TN TO BRN ANG F XLN DNS  
NS

LS TN TO BRN ANG F XLN DNS  
NS

LS AA WITH LS LT GRY ANG F  
XLN DNS NS

LS CRM TO TN F XLN DNS  
SOME BEING SLIGHTLY  
CHAKLY

LS AA WITH SOME OFF WHT  
CHAKLY SOFT WITH LS BRN  
ANG F XLN DNS TO V DNS NS

LS TN TO LT GRY ANG F XLN  
DNS NS

LS GRY TO DRK GRY ANG F  
XLN DNS TO V DNS NS WITH SH  
GRY FIRM

AA WITH LS TN TO BRN ANG F  
XLN VUGGY DNS NS WITH SH

VIS 56  
WT 8.7  
LCM 3#

VIS 70  
WT 8.3  
LCM 4#

VIS 65  
WT 8.3  
LCM 4#

VIS 60  
WT 8.3  
LCM 4#

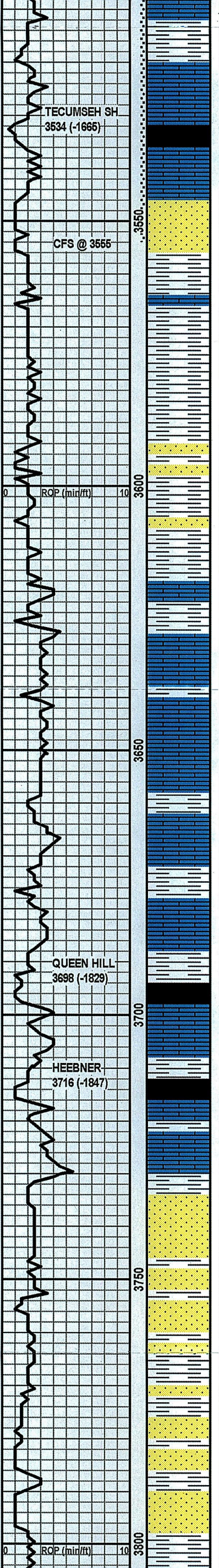
VIS 65  
WT 8.3  
LCM 4#

VIS 57  
WT 8.2  
LCM 3#

WT 8.6  
VIS 50  
YP 15  
pH 11.5  
FIL 9.2  
CHL 6,000  
LCM 4#

DST #1 3499' TO 3555'  
SEE REPORT ABOVE





GRY FIRM

LS TN ANG F XLN DNS NS WITH SH GRN TO GRY FIRM WITH SH BLK CARB

LS CRM TO TN ANG F XLN P POS WITH SS WHT TO TN F-M GR SUB RD TO RD SLIGHT STAIN NO FLOR NO ODOR NO FREE OIL

LS & SS AA WITH NO FLOR SLIGHT CUT NO ODOR

LS TN TO BRN F XLN DNS NS WITH SH LT GRT TO GRY SOME V SILTY SOFT

SH GRY SILTY AA WITH SS GRY F GR SUB RD V SHALY NS

AA WITH LS BRN TO DRK BRN ANG F XLN DNS TO V DNS NS

LS AA WITH LS GRY TO DRK GRY ANG F XLN DNS NS

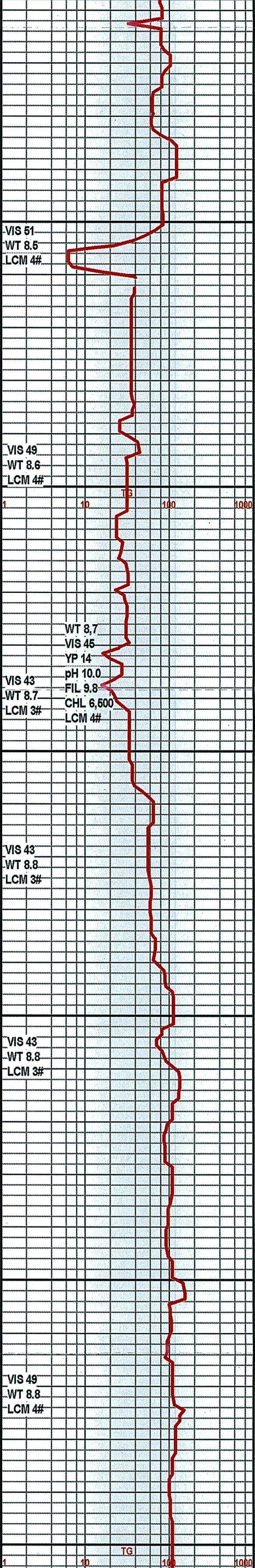
LS DRK BRN ANG F XLN SLIGHTLY VUGGY DNS NS WITH SH BLK CARB

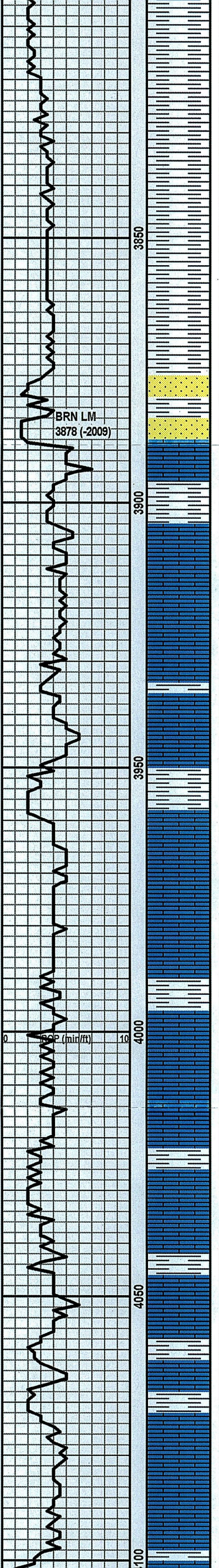
SH AA WITH LS TN TO BRN ANG F XLN DNS NS

LS CRM TO TN ANG P POS F XLN DNS NS WITH SH BLK CARB

SS WHT TO LT GRY F GR SUB RD SLIGHTLY SHALY NS WITH SOME SH LT GRY V SLITY SOFT

SS LT GRY F-M GR SUB RD SHALLY WITH SH AA





SH GRY TO DRK GRY FIRM  
WITH SS AA

VIS 48  
WT 8.9  
LCM 4#

SH AA WITH INTERBEDDED  
PYRITE

VIS 47  
WT 8.8  
LCM 4#

SH GRY FIRM

VIS 49  
WT 8.8  
LCM 4#

SH AA WITH SS LT GRY F GR  
SUB RD TO RD TIGHT  
SLIGHTLY SHALLY NS

LS BRN TO DRK BRN ANG F  
XLN V DNS WITH LS TN TO BRN  
F XLN FOS DNS NS WITH SH  
GRY TO GRN FIRM

VIS 48  
WT 8.9  
LCM 4#

LS TN TO LT BRN F XLN DNS  
SOM SLIGHTLY CHAKLYNS

LS AA

VIS 47  
WT 8.9  
LCM 3#

LS AA WITH SH GRY TO GRN  
FIRM

VIS 44  
WT 8.9  
LCM 4#

LS AA WITH LS DRK BRN ANG  
F XLN V DNS WITH TR LT BRN  
CHERT

LS TN TO BRN TO LT GRY ANG  
F XLN DNS NS WITH CHERT  
GRY SHARP

LS AA WITH LS OFF WHT TO  
CRM VF XLN CHAKLY SOFT

LS DRK GRY TO BRN ANG F  
XLN FOS DNS NS WITH SH DRK  
GRY TO BLK FIRM

LS TN TO BRN F XLN VUGGY  
DNS NS

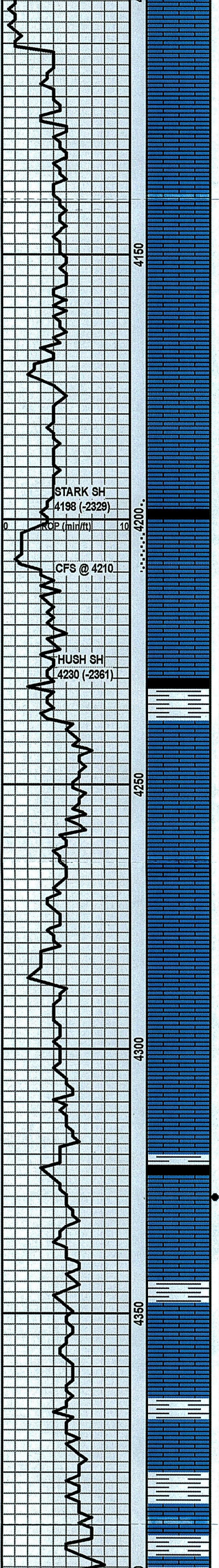
VIS 50  
WT 9.0  
LCM 4#

LS CRM TO TN F XLN DNS NS

VIS 57  
WT 8.9  
LCM 4#

LS TN ANG F XLN F-G POS NS

TG 1 10 100 1000



LS TN TO BRN F XLN DNS NS

LS CRM TO TN ANG F XLN DNS WITH INTERBEDDED PYRITE NS

LS BRN TO GRY ANG F XLN DNS TO V DNS NS WITH SH GRY TO BLK SOME SILTY

LS AA WITH LS OFF WHT TO CRM VF XLN CHAKLY SOFT

LS TN TO BRN ANG F XLN DNS WITH SOME SLIGHTLY CHAKLY SLIGHTLY VUGGYNS WITH CHERT TN TO LT GRY SHARP

LS TN TO LT BRN F XLN F POS F ODOR ODOR NO FLOR WITH SH BLK CARB

LS TH TO LT BRN ANG F XLN F TO G STAN F-G ODOR SLIGHT RAINBOW ON WATER NO FREE OIL

LS BRN ANG F XLN V DNS FOS NS

LS AA WITH LS GRY TO DRK GRYF XLN DNS NS WITH SH GRY TO BLK SOME CARB

LS CRM TO TN F XLN DNS WITH LOTS CHERT TN TO LT GRY SHARP

LS AA WITH LS OFF WHT TO CRM VF XLN CHAKLY SOFT

LS TN TO BRN ANG F XLN DNS WITH TR PYRITE

LS AA WITH CHERT LT GRY TO BRN SHARP WITH SH GRY FIRM WITH SH BLK CARB

LS TN TO BRN ANG F XLN DNS FOS NS WITH SH GRY TO GRN FIRM TO HD

LS AA WITH LS LT GRY ANG F XLN DNS NS

LS TN TO LT BRN F XLN DNS WITH SH GRY TO GRN TO MAROON V FIRM

LS TN TO BRN ANG F XLN DNS TO V DNS NS

VIS 53  
WT 9.0  
LCM 4#

WT 9.0  
VIS 50  
YP 15  
pH 10.0  
FIL 8.8  
CHL 6,000  
LCM 4#

VIS 52  
WT 9.0  
LCM 4#

VIS 48  
WT 9.1  
LCM 4#

VIS 47  
WT 9.1  
LCM 4#

DST #2 4196' TO 4209'  
TSEE REPORT ABOVE

WT 9.0  
VIS 60  
YP 17  
pH 10.0  
FIL 10.4  
CHL 9,000  
LCM 4#

VIS 65  
WT 9.0  
LCM 3#

VIS 56  
WT 9.0  
LCM 5#

VIS 49  
WT 9.0  
LCM 4#

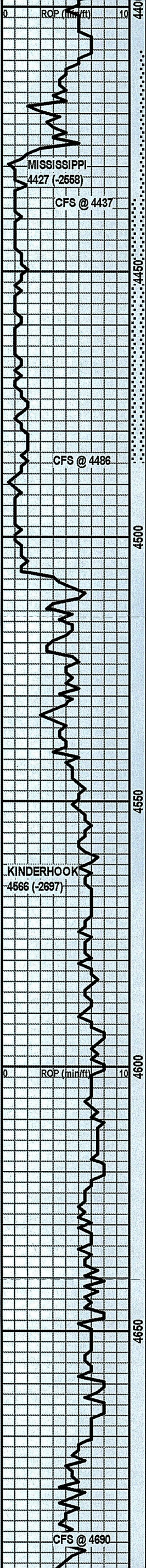
VIS 48  
WT 9.0  
LCM 4#

VIS 51  
WT 9.0  
LCM 3#

VIS 49  
WT 9.0  
LCM 4#

VIS 48  
WT 9.0  
LCM 4#

VIS 48  
WT 9.0  
LCM 4#



LS AA WITH MULTI COLOR  
CHERT MOSTLY SHARP NS  
WITH SH GRY TO GRN TO  
MAROON FIRM

CHERT WHT TO TN SLIGHTLY  
WHEATHERED F-G POS F STAIN  
G FLOR G SHOW OF FREE OIL  
G CUT F-G ODOR WITH MULIT  
COLORED CHERT WITH SH  
MAROON TO GRY TO GRN  
FIRM

CHERT AA WITH MOSTLY  
WEATHERED G POS VG STAIN  
VG FLOR VG ODOR GOOD  
SHOW OF GASSY OIL

CHERT MOSTLY WEATHERED  
SOME VG POS VG BRN TO BLK  
STAIN VG FLOR VG ODOR  
GOOD SHOW OF GASSEY OIL  
WITH CHERT LT TN SHARP HD  
NS

CHERT WHT TO OFF WITH TO  
LT GRY SHARP SOME EDGE  
STAINING NO FLOR NO CUT

CHERT AA WITH CHERT BRN  
TO GRN TO RED SHARP NS  
WITH LS BRN ANG F-M XLN  
DNS NS

LS AA WITH LS DRK BRN F-M  
XLN VUGGY DNS NS WITH SH  
GRY TO DRK GRY FIRM

SH LT TO DRK GRN TO GRY TO  
RED FIRM

LS BRN TO DRK BRN F-M XLN  
DNS

SH MOSTLY GRY FIRM TO SOFT  
WITH SH BRN TO RED FIRM

SH AA WITH SH DRK GRY TO  
BLK FIRM

SH MOSTLY GRY FIRM TO SOFT

SH LT TO DRK GRY TO BLK  
FIRM WITH TR PYRITE

SH AA

SH GRY TO BLK FIRM

SH AA WITH INTERBEDDED  
PYRITE

SH AA WITH LOTS OF PYRITE

