

Sandridge Energy

Myra 3406 1-8H (Unit 310) (Final)

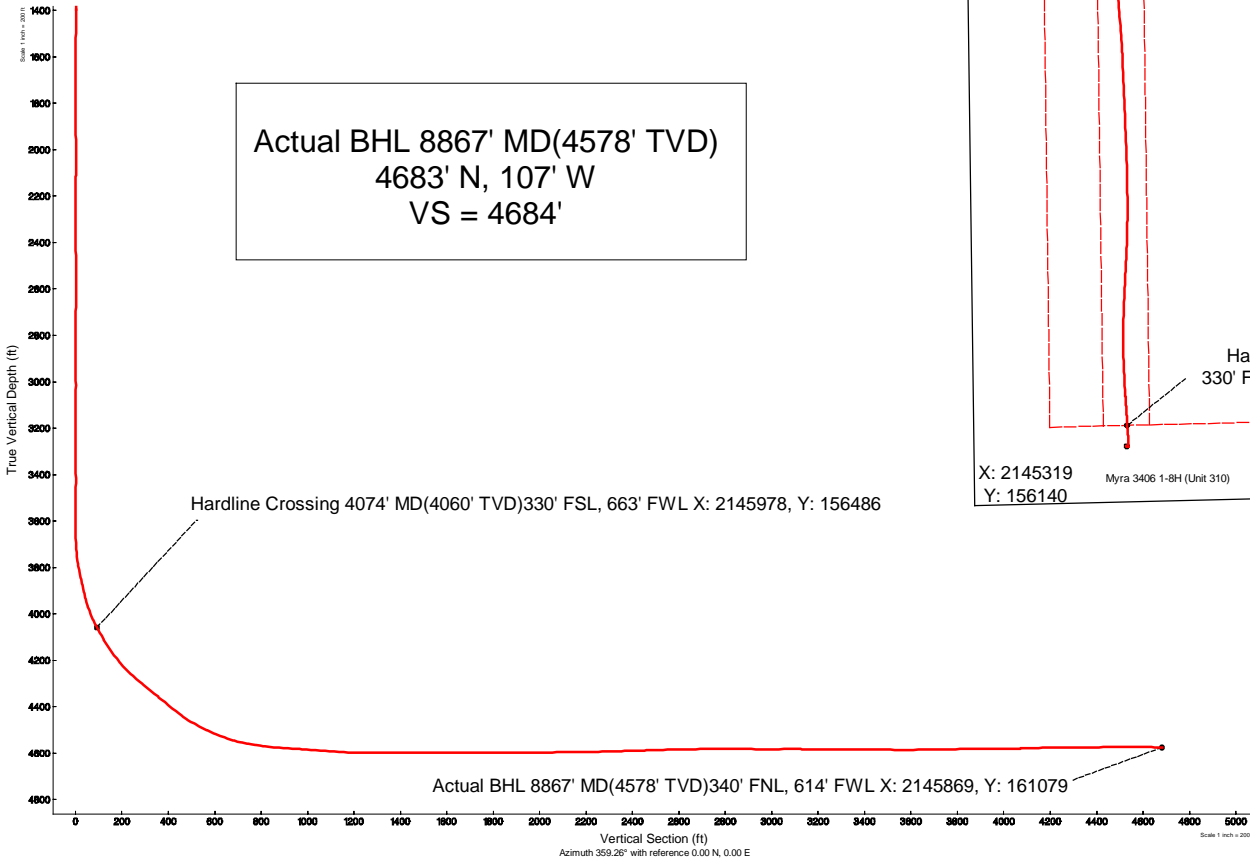
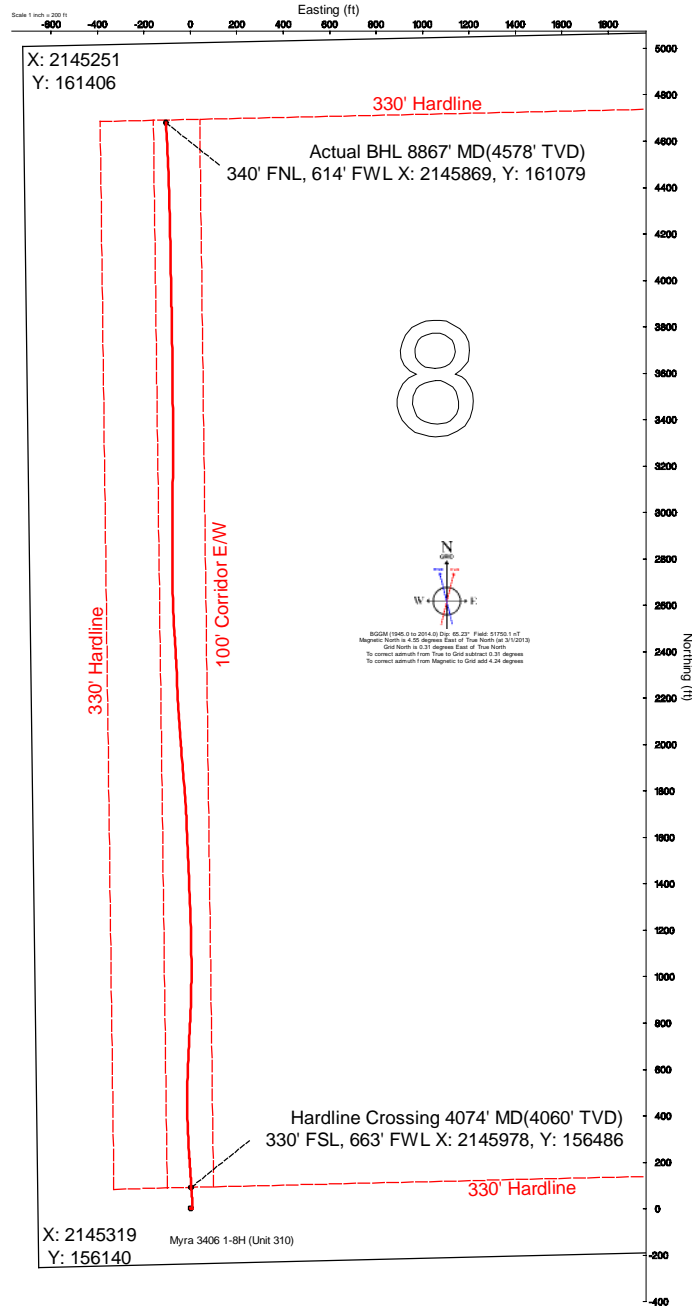
Myra 3406 1-8H (Unit 310)

Harper County, Kansas (Sandridge Energy) NAD27 / Grid

Plot reference wellpath is Plan 1	
True vertical depths are referenced to Unit 310 (RKB)	Grid System: NAD27 / Lambert Kansas SP, Southern Zone (1502), US feet
Measured depths are referenced to Unit 310 (RKB)	North Reference: Grid north
Unit 310 (RKB) to Mean Sea Level: 1304 feet	Scale: True distance
Mean Sea Level to Mud line (At Slot: Myra 3406 1-8H (Unit 310)): -1289 feet	Depths are in feet
Coordinates are in feet referenced to Slot	Created by: broomart on 3/6/2013

Location Information

Facility Name		Grid East (US ft)	Grid North (US ft)	Latitude	Longitude	
Myra 3406 1-8H Sec 8-34S-6W		2145976.000	156396.000	37°05'42.391"N	97°59'58.353"W	
Slot	Local N (ft)	Local E (ft)	Grid East (US ft)	Grid North (US ft)	Latitude	Longitude
Myra 3406 1-8H (Unit 310)	0.00	0.00	2145976.000	156396.000	37°05'42.391"N	97°59'58.353"W
Unit 310 (RKB) to Mud line (At Slot: Myra 3406 1-8H (Unit 310))					15ft	
Mean Sea Level to Mud line (At Slot: Myra 3406 1-8H (Unit 310))					-1289ft	
Unit 310 (RKB) to Mean Sea Level					1304ft	



Actual Wellpath Report

Sandridge Myra 3406 1-8H (Unit 310)_Final Surveys.

Page 1 of 5

REFERENCE WELLPATH IDENTIFICATION			
Operator	Sandridge Energy	Slot	Myra 3406 1-8H (Unit 310)
Area	Kansas	Well	SL (240 FSL, 660 FWL)
Field	Harper County, Kansas (Sandridge Energy) NAD27 / Grid	Wellbore	Myra 3406 1-8H (Unit 310) Actual
Facility	Myra 3406 1-8H Sec 8-34S-6W		

REPORT SETUP INFORMATION			
Projection System	NAD27 / Lambert Kansas SP, Southern Zone (1502), US feet		
North Reference	Grid	Software System	WellArchitect 3.0.0
Convergence at slot	0.31° East	User	Broomarl
Scale	1.00004	Report Generated	3/26/2013 at 11:07:53 AM
Wellbore last revised	03-01-2013	Database/Source file	WA_OklahomaCity

WELLPATH LOCATION						
	Local coordinates		Grid coordinates		Geographic coordinates	
	North[ft]	East[ft]	Easting[US ft]	Northing[US ft]	Latitude	Longitude
Slot Location	0.00	0.00	2145976.00	156396.00	37°05'42.391"N	97°59'58.353"W
Facility Reference Pt			2145976.00	156396.00	37°05'42.391"N	97°59'58.353"W
Field Reference Pt			2132248.82	161602.28	37°06'34.560"N	98°02'47.460"W

WELLPATH DATUM			
Calculation method	Minimum curvature	Unit 310 (RKB) to Facility Vertical Datum	15.00ft
Horizontal Reference Pt	Slot	Unit 310 (RKB) to Mean Sea Level	1304.00ft
Vertical Reference Pt	Unit 310 (RKB)	Unit 310 (RKB) to Mud Line at Slot (Myra 3406 1-8H (Unit 310))	15.00ft
MD Reference Pt	Unit 310 (RKB)	Section Origin	N 0.00, E 0.00 ft
Field Vertical Reference	Mean Sea Level	Section Azimuth	359.26°

Actual Wellpath Report

Sandridge Myra 3406 1-8H (Unit 310)_Final Surveys.

Page 2 of 5

REFERENCE WELLPATH IDENTIFICATION				
Operator	Sandridge Energy		Slot	Myra 3406 1-8H (Unit 310)
Area	Kansas		Well	SL (240 FSL, 660 FWL)
Field	Harper County, Kansas (Sandridge Energy) NAD27 / Grid		Wellbore	Myra 3406 1-8H (Unit 310) Actual
Facility	Myra 3406 1-8H Sec 8-34S-6W			

WELLPATH DATA (116 stations) † = interpolated/extrapolated station										
MD [ft]	Inclination [°]	Azimuth [°]	TVD [ft]	Vert Sect [ft]	North [ft]	East [ft]	Grid East [US ft]	Grid North [US ft]	DLS [°/100ft]	Log Comment
0.00	0.000	110.380	0.00	0.00	0.00	0.00	2145976.00	156396.00	0.00	
15.00	0.000	110.380	15.00	0.00	0.00	0.00	2145976.00	156396.00	0.00	
250.00	0.250	110.380	250.00	-0.18	-0.18	0.48	2145976.48	156395.82	0.11	
500.00	0.250	110.380	500.00	-0.58	-0.56	1.50	2145977.50	156395.44	0.00	
774.00	0.750	110.380	773.99	-1.44	-1.39	3.74	2145979.74	156394.61	0.18	
815.00	1.280	110.380	814.98	-1.70	-1.64	4.43	2145980.43	156394.36	1.29	
906.00	0.900	96.340	905.96	-2.16	-2.08	6.09	2145982.09	156393.92	0.51	
998.00	0.610	45.550	997.96	-1.91	-1.81	7.16	2145983.16	156394.19	0.76	
1091.00	0.500	348.350	1090.95	-1.17	-1.07	7.43	2145983.43	156394.93	0.58	
1182.00	0.190	357.580	1181.95	-0.63	-0.53	7.34	2145983.34	156395.47	0.34	
1274.00	0.030	244.610	1273.95	-0.48	-0.39	7.31	2145983.31	156395.61	0.22	
1366.00	0.240	100.650	1365.95	-0.53	-0.43	7.48	2145983.48	156395.57	0.29	
1457.00	0.390	184.790	1456.95	-0.88	-0.78	7.64	2145983.64	156395.22	0.48	
1547.00	0.290	159.790	1546.95	-1.40	-1.30	7.70	2145983.70	156394.70	0.20	
1639.00	0.100	132.200	1638.95	-1.67	-1.57	7.83	2145983.84	156394.43	0.22	
1731.00	0.070	237.970	1730.95	-1.75	-1.65	7.85	2145983.85	156394.35	0.15	
1825.00	0.260	310.660	1824.95	-1.64	-1.54	7.64	2145983.64	156394.46	0.26	
1919.00	0.350	37.280	1918.95	-1.28	-1.18	7.65	2145983.65	156394.82	0.45	
2014.00	0.320	59.060	2013.94	-0.91	-0.81	8.05	2145984.05	156395.19	0.14	
2109.00	0.500	138.560	2108.94	-1.10	-0.98	8.55	2145984.55	156395.02	0.57	
2204.00	0.250	143.570	2203.94	-1.58	-1.46	8.95	2145984.95	156394.54	0.27	
2299.00	0.220	275.370	2298.94	-1.73	-1.61	8.89	2145984.89	156394.39	0.45	
2393.00	0.410	344.780	2392.94	-1.38	-1.27	8.62	2145984.62	156394.73	0.42	
2488.00	0.090	42.190	2487.94	-1.00	-0.89	8.59	2145984.59	156395.11	0.39	
2583.00	0.130	262.450	2582.94	-0.96	-0.85	8.53	2145984.53	156395.15	0.22	
2678.00	0.190	142.760	2677.94	-1.10	-0.98	8.52	2145984.52	156395.02	0.29	
2774.00	0.070	126.580	2773.94	-1.26	-1.15	8.66	2145984.66	156394.85	0.13	
2868.00	0.320	74.110	2867.94	-1.23	-1.11	8.96	2145984.96	156394.89	0.30	
2963.00	0.030	15.230	2962.94	-1.13	-1.01	9.22	2145985.22	156394.99	0.32	
3058.00	0.060	115.040	3057.94	-1.13	-1.01	9.27	2145985.27	156394.99	0.08	
3152.00	0.100	226.870	3151.94	-1.21	-1.09	9.26	2145985.26	156394.91	0.14	
3247.00	0.070	170.250	3246.94	-1.32	-1.20	9.21	2145985.21	156394.80	0.09	
3342.00	0.200	28.850	3341.94	-1.23	-1.11	9.30	2145985.30	156394.89	0.27	
3437.00	0.110	108.430	3436.93	-1.12	-1.00	9.46	2145985.46	156395.00	0.22	
3532.00	1.140	214.740	3531.93	-1.92	-1.80	9.01	2145985.01	156394.20	1.24	
3627.00	0.560	325.930	3626.92	-2.30	-2.19	8.21	2145984.21	156393.81	1.52	
3721.00	3.390	356.560	3720.86	0.86	0.96	7.79	2145983.79	156396.96	3.11	
3753.00	6.560	357.710	3752.73	3.63	3.73	7.66	2145983.66	156399.73	9.91	
3785.00	9.380	358.950	3784.42	8.07	8.17	7.54	2145983.54	156404.17	8.83	
3816.00	11.520	358.940	3814.90	13.69	13.79	7.43	2145983.43	156409.79	6.90	
3848.00	12.980	0.600	3846.18	20.48	20.58	7.41	2145983.41	156416.58	4.69	
3880.00	11.930	3.070	3877.42	27.37	27.48	7.63	2145983.63	156423.48	3.68	
3911.00	12.650	358.150	3907.71	33.96	34.07	7.69	2145983.69	156430.07	4.10	
3943.00	15.270	352.070	3938.77	41.65	41.74	6.99	2145982.99	156437.75	9.37	
3974.00	18.770	352.740	3968.40	50.66	50.74	5.80	2145981.80	156446.74	11.31	

Actual Wellpath Report

Sandridge Myra 3406 1-8H (Unit 310)_Final Surveys.

Page 3 of 5

REFERENCE WELLPATH IDENTIFICATION				
Operator	Sandridge Energy		Slot	Myra 3406 1-8H (Unit 310)
Area	Kansas		Well	SL (240 FSL, 660 FWL)
Field	Harper County, Kansas (Sandridge Energy) NAD27 / Grid		Wellbore	Myra 3406 1-8H (Unit 310) Actual
Facility	Myra 3406 1-8H Sec 8-34S-6W			

WELLPATH DATA (116 stations) † = interpolated/extrapolated station

MD [ft]	Inclination [°]	Azimuth [°]	TVD [ft]	Vert Sect [ft]	North [ft]	East [ft]	Grid East [US ft]	Grid North [US ft]	DLS [°/100ft]	Log Comment
4006.00	21.510	353.470	3998.44	61.61	61.68	4.48	2145980.48	156457.68	8.60	
4038.00	24.560	355.400	4027.89	74.09	74.14	3.28	2145979.28	156470.14	9.82	
4069.00	26.960	356.260	4055.81	87.54	87.57	2.31	2145978.31	156483.58	7.84	
4074.00	27.384	356.507	4060.26	89.82	89.85	2.16	2145978.16	156485.85	8.77	Hardline Crossing 4074' MD(4060' TVD)330' FSL, 663' FWL X: 21459
4101.00	29.680	357.730	4083.98	102.70	102.73	1.52	2145977.52	156498.73	8.77	
4133.00	31.230	358.170	4111.56	118.92	118.94	0.94	2145976.94	156514.94	4.89	
4164.00	32.970	357.120	4137.82	135.38	135.40	0.26	2145976.26	156531.40	5.89	
4196.00	35.090	355.860	4164.34	153.27	153.27	-0.84	2145975.16	156549.28	6.98	
4228.00	37.530	355.590	4190.12	172.18	172.16	-2.26	2145973.74	156568.17	7.64	
4259.00	40.660	355.990	4214.18	191.69	191.66	-3.69	2145972.31	156587.66	10.13	
4291.00	43.690	355.770	4237.89	213.13	213.08	-5.23	2145970.77	156609.09	9.48	
4323.00	47.160	356.340	4260.35	235.89	235.82	-6.80	2145969.20	156631.83	10.92	
4386.00	50.800	356.900	4301.69	283.36	283.26	-9.59	2145966.41	156679.27	5.82	
4481.00	50.700	357.830	4361.80	356.89	356.75	-12.98	2145963.02	156752.76	0.77	
4533.00	50.830	358.470	4394.69	397.16	397.01	-14.28	2145961.72	156793.02	0.99	
4576.00	51.790	359.430	4421.57	430.72	430.56	-14.89	2145961.11	156826.58	2.83	
4607.00	54.240	0.110	4440.21	455.48	455.32	-14.99	2145961.01	156851.34	8.10	
4639.00	57.150	0.490	4458.25	481.91	481.75	-14.85	2145961.15	156877.77	9.15	
4670.00	60.100	1.040	4474.39	508.36	508.22	-14.49	2145961.51	156904.23	9.64	
4702.00	62.360	1.480	4489.79	536.39	536.26	-13.87	2145962.13	156932.28	7.16	
4733.00	64.470	1.950	4503.66	564.09	563.97	-13.04	2145962.96	156959.99	6.94	
4765.00	66.780	1.960	4516.86	593.20	593.09	-12.05	2145963.95	156989.12	7.22	
4796.00	69.330	2.730	4528.45	621.91	621.82	-10.87	2145965.13	157017.84	8.54	
4828.00	71.640	2.200	4539.14	652.02	651.95	-9.57	2145966.43	157047.98	7.39	
4859.00	74.170	2.750	4548.25	681.60	681.55	-8.29	2145967.71	157077.58	8.34	
4891.00	77.060	2.780	4556.20	712.54	712.51	-6.80	2145969.20	157108.54	9.03	
4922.00	79.370	2.790	4562.53	742.83	742.82	-5.32	2145970.68	157138.85	7.45	
4954.00	81.690	3.280	4567.79	774.32	774.34	-3.65	2145972.35	157170.36	7.41	
4986.00	83.180	2.740	4572.01	805.97	806.01	-1.99	2145974.01	157202.04	4.95	
5049.00	85.840	2.110	4578.03	868.58	868.66	0.67	2145976.67	157264.69	4.34	
5144.00	85.930	0.740	4584.85	963.26	963.39	3.02	2145979.02	157359.42	1.44	
5239.00	85.780	359.490	4591.72	1058.00	1058.13	3.21	2145979.21	157454.17	1.32	
5334.00	86.700	358.770	4597.95	1152.80	1152.92	1.77	2145977.77	157548.96	1.23	
5433.00	90.460	358.230	4600.40	1251.74	1251.84	-0.82	2145975.18	157647.88	3.84	
5505.00	90.150	357.600	4600.02	1323.72	1323.79	-3.44	2145972.56	157719.83	0.98	
5600.00	89.910	357.690	4599.97	1418.68	1418.71	-7.34	2145968.66	157814.76	0.27	
5694.00	90.090	357.220	4599.97	1512.63	1512.61	-11.51	2145964.49	157908.67	0.54	
5789.00	90.090	358.000	4599.82	1607.59	1607.53	-15.48	2145960.52	158003.59	0.82	
5884.00	90.190	357.210	4599.59	1702.55	1702.45	-19.45	2145956.55	158098.51	0.84	
5979.00	89.780	355.420	4599.61	1797.42	1797.24	-25.55	2145950.45	158193.31	1.93	
6074.00	90.000	355.050	4599.79	1892.19	1891.92	-33.44	2145942.56	158287.98	0.45	
6169.00	90.180	355.780	4599.64	1986.98	1986.61	-41.04	2145934.96	158382.68	0.79	
6263.00	90.990	355.740	4598.69	2080.80	2080.35	-47.99	2145928.01	158476.42	0.86	
6358.00	90.530	356.790	4597.43	2175.66	2175.14	-54.17	2145921.82	158571.22	1.21	
6453.00	91.380	357.950	4595.84	2270.59	2270.02	-58.53	2145917.47	158666.10	1.51	

Actual Wellpath Report

Sandridge Myra 3406 1-8H (Unit 310)_Final Surveys.

Page 4 of 5

REFERENCE WELLPATH IDENTIFICATION				
Operator	Sandridge Energy		Slot	Myra 3406 1-8H (Unit 310)
Area	Kansas		Well	SL (240 FSL, 660 FWL)
Field	Harper County, Kansas (Sandridge Energy) NAD27 / Grid		Wellbore	Myra 3406 1-8H (Unit 310) Actual
Facility	Myra 3406 1-8H Sec 8-34S-6W			

WELLPATH DATA (116 stations)

MD [ft]	Inclination [°]	Azimuth [°]	TVD [ft]	Vert Sect [ft]	North [ft]	East [ft]	Grid East [US ft]	Grid North [US ft]	DLS [°/100ft]	Log Comment
6548.00	91.580	356.660	4593.39	2365.50	2364.88	-63.00	2145913.00	158760.97	1.37	
6643.00	91.860	356.430	4590.54	2460.35	2459.67	-68.72	2145907.28	158855.76	0.38	
6738.00	91.790	357.610	4587.51	2555.23	2554.49	-73.66	2145902.34	158950.58	1.24	
6833.00	90.620	358.240	4585.51	2650.18	2649.40	-77.10	2145898.90	159045.50	1.40	
6927.00	91.050	359.560	4584.14	2744.17	2743.37	-78.90	2145897.10	159139.47	1.48	
7022.00	89.220	0.040	4583.92	2839.16	2838.37	-79.23	2145896.77	159234.47	1.99	
7117.00	89.290	0.230	4585.15	2934.14	2933.36	-79.01	2145896.99	159329.47	0.21	
7213.00	90.550	0.470	4585.29	3030.12	3029.36	-78.42	2145897.58	159425.47	1.34	
7308.00	89.660	0.960	4585.11	3125.09	3124.35	-77.24	2145898.76	159520.46	1.07	
7403.00	88.610	0.070	4586.55	3220.05	3219.33	-76.38	2145899.62	159615.45	1.45	
7498.00	90.220	0.270	4587.52	3315.03	3314.32	-76.10	2145899.90	159710.44	1.71	
7592.00	90.180	359.340	4587.19	3409.02	3408.32	-76.42	2145899.58	159804.44	0.99	
7688.00	89.290	359.040	4587.63	3505.02	3504.31	-77.78	2145898.22	159900.43	0.98	
7782.00	90.280	359.790	4587.99	3599.02	3598.30	-78.74	2145897.26	159994.43	1.32	
7877.00	90.980	359.310	4586.94	3694.01	3693.29	-79.48	2145896.51	160089.42	0.89	
7972.00	91.020	359.110	4585.28	3789.00	3788.27	-80.79	2145895.20	160184.40	0.21	
8068.00	89.570	358.760	4584.79	3884.99	3884.25	-82.58	2145893.42	160280.39	1.55	
8163.00	90.430	358.790	4584.79	3979.99	3979.22	-84.61	2145891.39	160375.37	0.91	
8257.00	92.540	359.020	4582.35	4073.95	4073.17	-86.40	2145889.59	160469.32	2.26	
8352.00	91.020	359.090	4579.40	4168.90	4168.11	-87.97	2145888.03	160564.26	1.60	
8447.00	90.370	358.740	4578.25	4263.89	4263.08	-89.77	2145886.23	160659.24	0.78	
8542.00	90.560	358.020	4577.48	4358.88	4358.04	-92.45	2145883.54	160754.20	0.78	
8637.00	90.550	358.070	4576.56	4453.85	4452.98	-95.69	2145880.30	160849.14	0.05	
8732.00	90.220	357.440	4575.92	4548.81	4547.91	-99.42	2145876.58	160944.07	0.75	
8820.00	88.770	356.460	4576.70	4636.74	4635.77	-104.10	2145871.90	161031.94	1.99	
8867.00	88.770	356.460	4577.71	4683.67	4682.67	-107.00	2145869.00	161078.84	0.00	Actual BHL 8867' MD(4578' TVD)340' FNL, 614' FWL X: 2145869, Y

Actual Wellpath Report

Sandridge Myra 3406 1-8H (Unit 310)_Final Surveys.

Page 5 of 5

REFERENCE WELLPATH IDENTIFICATION			
Operator	Sandridge Energy	Slot	Myra 3406 1-8H (Unit 310)
Area	Kansas	Well	SL (240 FSL, 660 FWL)
Field	Harper County, Kansas (Sandridge Energy) NAD27 / Grid	Wellbore	Myra 3406 1-8H (Unit 310) Actual
Facility	Myra 3406 1-8H Sec 8-34S-6W		

TARGETS									
Name	MD [ft]	TVD [ft]	North [ft]	East [ft]	Grid East [US ft]	Grid North [US ft]	Latitude	Longitude	Shape
Myra 3406 1-8H PBHL 330 FNL, 660 FWL Sec 8		4570.84	4693.83	-61.00	2145915.00	161090.00	37°06'28.804"N	97°59'58.795"W	point

WELLPATH COMPOSITION - Ref Wellbore: Myra 3406 1-8H (Unit 310) Actual Ref Wellpath: AWP - Final					
Start MD [ft]	End MD [ft]	Positional Uncertainty Model	Log Name/Comment	Wellbore	
15.00	774.00	Generic gyro - northseeking (Standard)	Gyros	Myra 3406 1-8H (Unit 310) Actual	
774.00	8820.00	NaviTrak (Standard)	INTEQ MWD	Myra 3406 1-8H (Unit 310) Actual	
8820.00	8867.00	Blind Drilling (std)	Projection to bit	Myra 3406 1-8H (Unit 310) Actual	