

MPC Natural Gas • Crude Oil
Exploration & Production
McCOY PETROLEUM CORPORATION
Wichita, Kansas

Scale 1:240 (5"=100') Imperial
Measured Depth Log

Well Name: Schmidt 'C' #6-29
Location: Sec. 29 - T30S - R31W, Haskell County, KS
License Number: API #: 15-081-22014
Spud Date: March 29, 2013
Surface Coordinates: 330' FNL & 660' FWL
Region: Lette SE
Drilling Completed: April 5, 2013

Bottom Hole
Coordinates:
Ground Elevation (ft): 2843' K.B. Elevation (ft): 2856'
Logged Interval (ft): 4000' To: 5700' Total Depth (ft): 5700' RTD 5698' LTD
Formation: Mississippian
Type of Drilling Fluid: Chemical Mud

Printed by MUD.LOG from WellSight Systems 1-800-447-1534 www.WellSight.com

OPERATOR

Company: McCoy Petroleum Corporation, License #5003
Address: 8080 E. Central Ave.
Suite 300
Wichita, KS 67206

GEOLOGIST

Name: Evan Stone
Company: McCoy Petroleum Corporation
Address: 8080 E. Central Ave.
Suite 300
Wichita, KS 67206

REMARKS

Surface Casing: Spud at 7:15 pm on 03/29/13. Drilled 12-1/4" to 1833'. Ran 43 joints of new 24#, 8-5/8" casing. Tallied 1814.' Set at 1829' KB. Welded straps on bottom 3 joints, tacked collars on the remainder. Centralizers (7) on joints 1;4;6;8;10;12;39. Basket at 120'. Float insert in top of 1st joint. Cemented with 450 sks Class A; 2% Gypseal, 3% CC, 2% Metsobeads & 1/4# FS; Plus tailed with 150 sks Class A with 2% Gel; 2% CC. Cement did circulate. Plug down at 10:45 am on 03/31/13. Allied Cementing ticket #052695. Deviation Survey Taken @ 1833' = 1-1/2°

LEGEND

LITHOLOGY

- Chert
- Conglomerate
- Dolomite
- Gypsum
- Limestone
- Oolitic ls
- Cherty ls
- Sandy ls
- Shaly ls
- Mrlst

- Salt
- Shale
- Carb shale
- Sandy shale
- Siltstone
- Sandstone
- Till

MINERAL

- Calcite
- Chert

- Glaucinite
- Pyrite
- Sand
- Silt

STRINGER

- Dolomite
- Gypsum
- Limestone
- Siltstone
- Sandstone

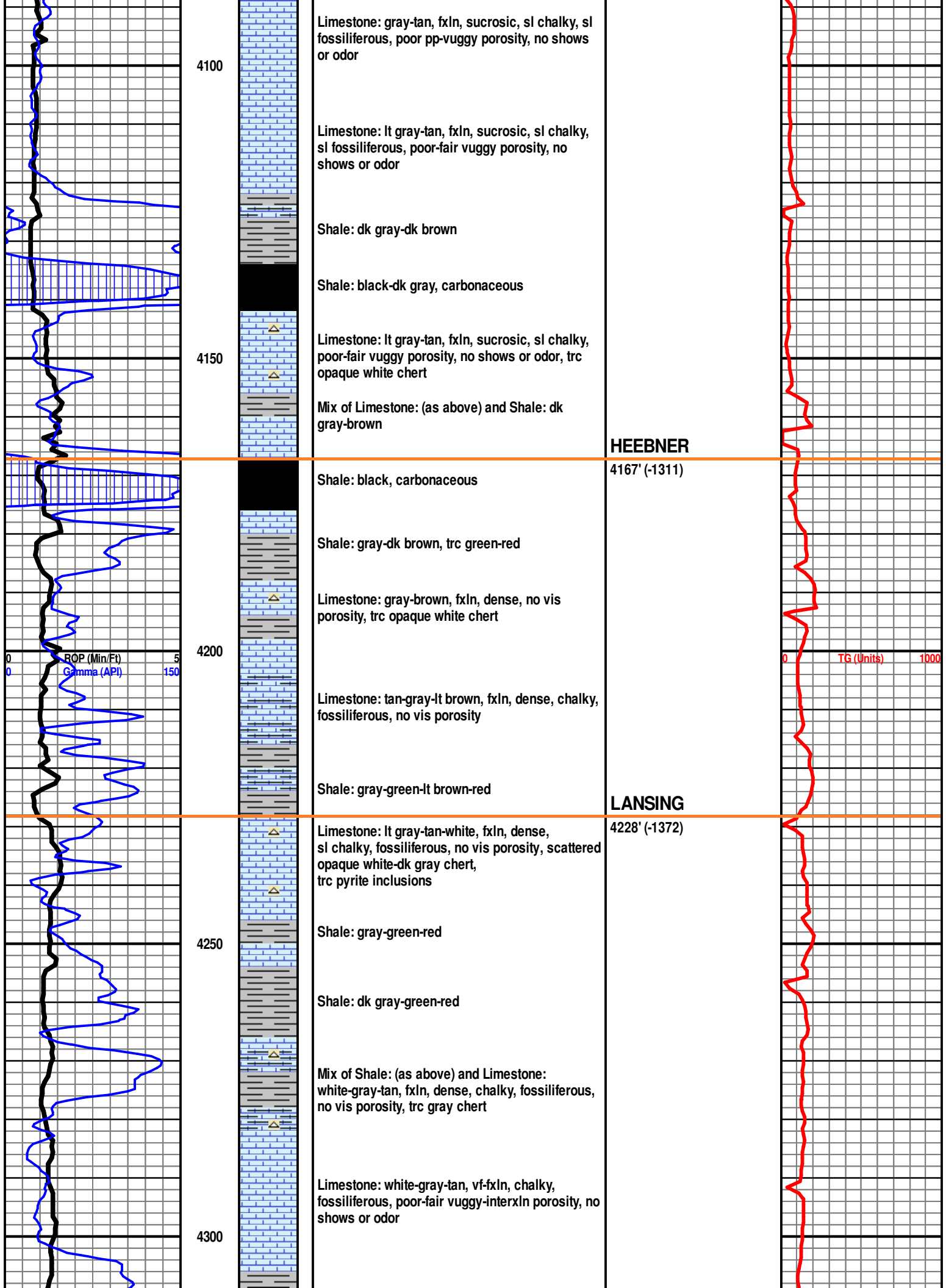
OIL/GAS SHOW

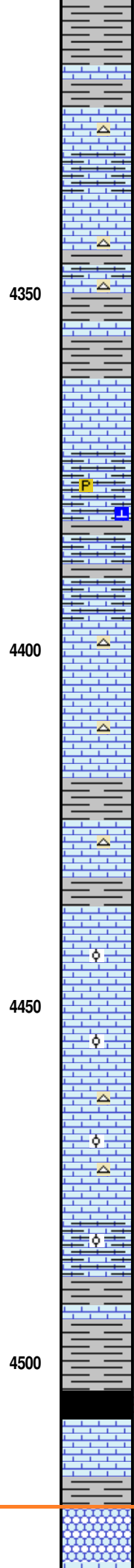
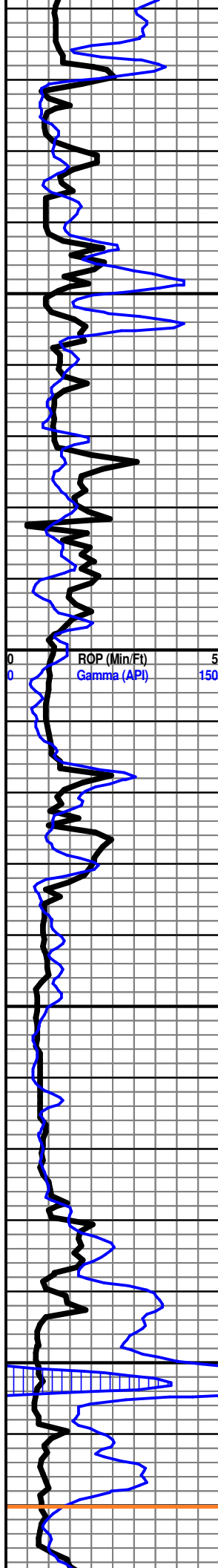
- Gas show
- Good
- Fair
- Poor
- Dead

INTERVAL

- Porosity

<p>SCHMIDT 'C' #6-29</p> <p>ROP (Min/Ft) </p> <p>Gamma (API) </p>	DEPTH	LITHOLOGY	OIL SHOWS	SAMPLE DESCRIPTIONS	REMARKS	TOTAL GAS
						TG (Units)
<p>ROP (Min/Ft) 5</p> <p>Gamma (API) 150</p>	3950			<p>McCoy Petroleum Corporation</p> <p>Schmidt 'C' #6-29</p> <p>330' FNL & 660' FWL</p> <p>Sec. 29 - T30S - R31W</p> <p>Haskell County, KS</p> <p>API: 15-081-22014</p> <p>Sterling Drilling: Rig #5</p> <p>Elevations: 2856' KB 2843' GL</p>		0 1000
<p>ROP (Min/Ft) 5</p> <p>Gamma (API) 150</p>	4000	Limestone		<p>Start 10' wet & dry samples @ 4000'</p> <p>Limestone: white-tan, fxln, chalky, no vis porosity</p>		0 1000
	4050	Limestone		<p>Limestone: white-tan, fxln, chalky, sucrosic, scattered poor vuggy-interxln porosity, no shows or odor</p> <p>Limestone: mix of tan-brown, fxln, sl chalky, fossiliferous, no vis porosity, and white-tan, fxln, chalky, sl sucrosic, no vis porosity</p> <p>Mix of Limestone: (as above), and Shale: dk gray-brown, silty</p> <p>Limestone: gray-tan-brown, vf-fxln, sucrosic, fossiliferous, scattered poor pp porosity, no shows or odor</p>		0 1000





Shale: gray-green

Limestone: lt gray-tan, fxln, chalky, no vis porosity, trc tan chert

Limestone: dk gray-tan-brown, vf-fxln, dense, sl chalky, no vis porosity, w/ gray-tan chert and gray-green shale

Shale: gray-green-red

Limestone: white-tan-brown, fxln, dense, chalky, fossiliferous, fair-good vuggy porosity, no shows or odor, trc scattered pyrite and calcite inclusions

Mix of Limestone: (as above) and Shale: dk gray-dk brown, pyritic

Limestone: tan-white, fxln, sucrosic, chalky, poor-fair vuggy porosity, no shows or odor, trc opaque gray-tan chert

Limestone: white-tan-gray, fxln, dense, fossiliferous, no vis porosity, trc white-tan chert and Shale: lt gray-dk brown

Limestone: lt gray-tan, fxln, soft, abundant white chalk, fossiliferous, fair-good vuggy porosity, oolitic in part w/ poor-fair oolitic porosity, no shows or odor

Limestone: white-tan-gray, fxln, soft, chalky, fair vuggy porosity, oolitic in part w/ poor oolitic porosity, no shows or odor, trc opaque white chert

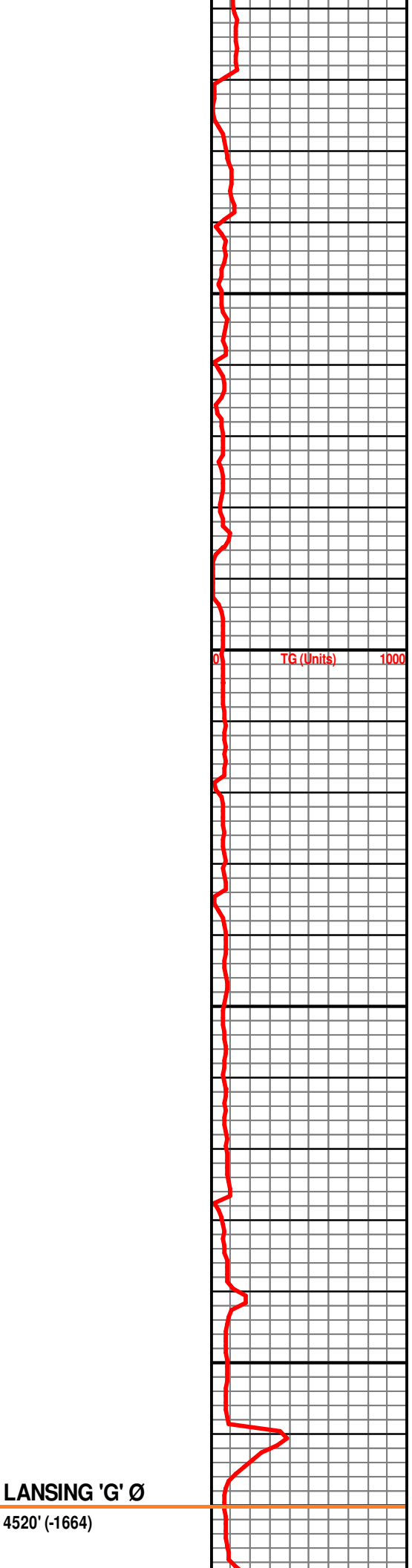
Limestone: white-tan-gray, fxln, dense, sl chalky, scattered poor vuggy porosity, oolitic in part w/ fair oolitic porosity, no shows or odor, abundant dk gray shale

Shale: dk gray-dk brown, silty

✱ Shale: black, carbonaceous

Limestone: gray-brown, fxln, dense, trc scattered vugs, no shows or odor

✱ Limestone: tan-brown, fxln, oolitic w/ fair-good oolitic porosity, light sat stain, sl show light to scattered bright yellow fluorescence, sl odor



LANSING 'G' Ø

4520' (-1664)

CFS @ 4530'

fo, scattered bright yellow fluorescence, sl sat stain, in tray w/ fair odor on break, sl show gas bubbles

4550

Shale: dk gray-green

Limestone: white-gray-tan, f-mxln, dense, sl chalky, fossiliferous, no vis porosity, trc opaque gray chert

Limestone: tan-gray, f-mxln, dense, sl fossiliferous, increased chert, trc scattered vugs, no vis porosity, no shows or odor

4600

Mix of Shale: lt gray-green-red, and Limestone: gray-tan-brown, fxln, dense, fossiliferous, no vis porosity

Limestone: lt gray-tan-white, fxln, soft, v chalky, sl fossiliferous, few scattered vugs, no shows or odor, trc dk gray chert

Limestone: tan-brown, vf-fxln, dense, sl chalky, abundant brown-gray chert, no vis porosity

4650

Limestone: tan-brown, vf-fxln, dense, sl chalky, decreased chert, no vis porosity

STARK

4672' (-1816)
SWOPE Ø

CFS @ 4685'

Limestone: tan, fxln, oolitic, fair-good oolitic porosity, scattered bright yellow fluorescence, lt sat stain, sl show light fo, strong odor, bleeding light oil droplets and trc slow streaming gas bubbles on break

4700

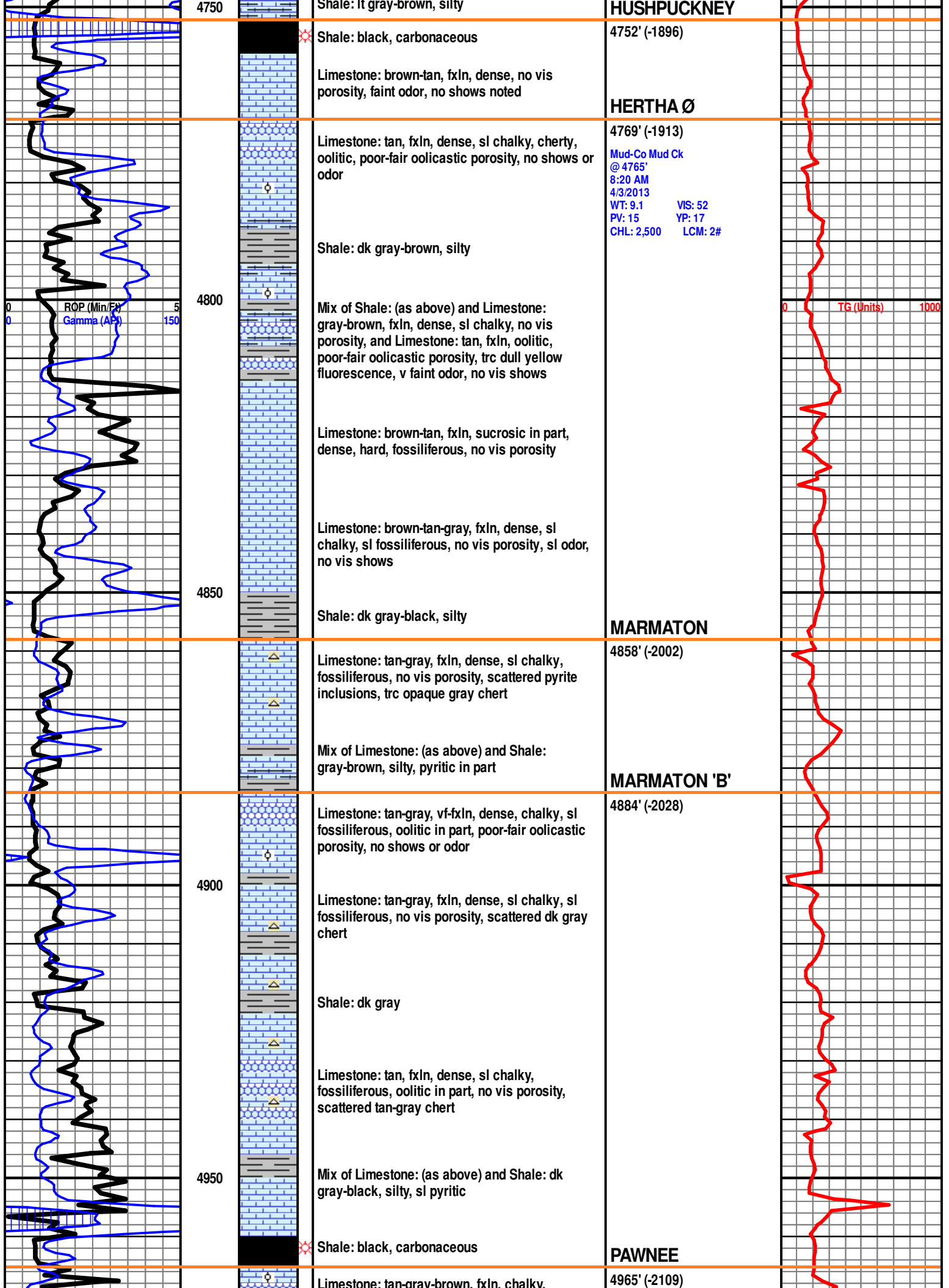
Limestone: tan, fxln, oolitic, fair-good oolitic porosity, scattered bright yellow fluorescence, lt sat stain, ssfo, fair odor

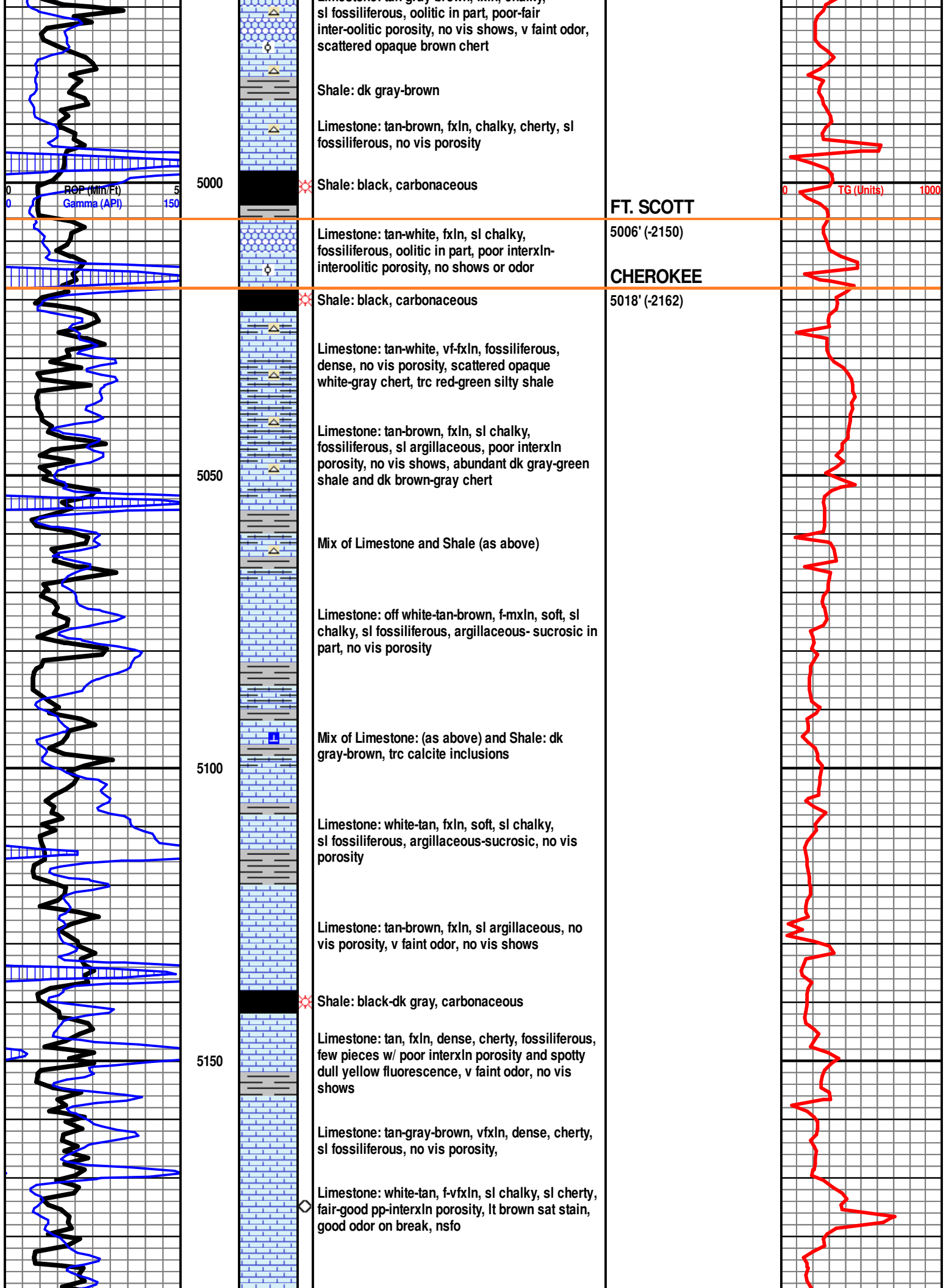
Limestone: brown, fxln, oolitic, good oolitic-trc fenestral porosity, bright yellow fluorescence, scattered lt sat stain, ssfo, good odor, trc bleeding oil droplets

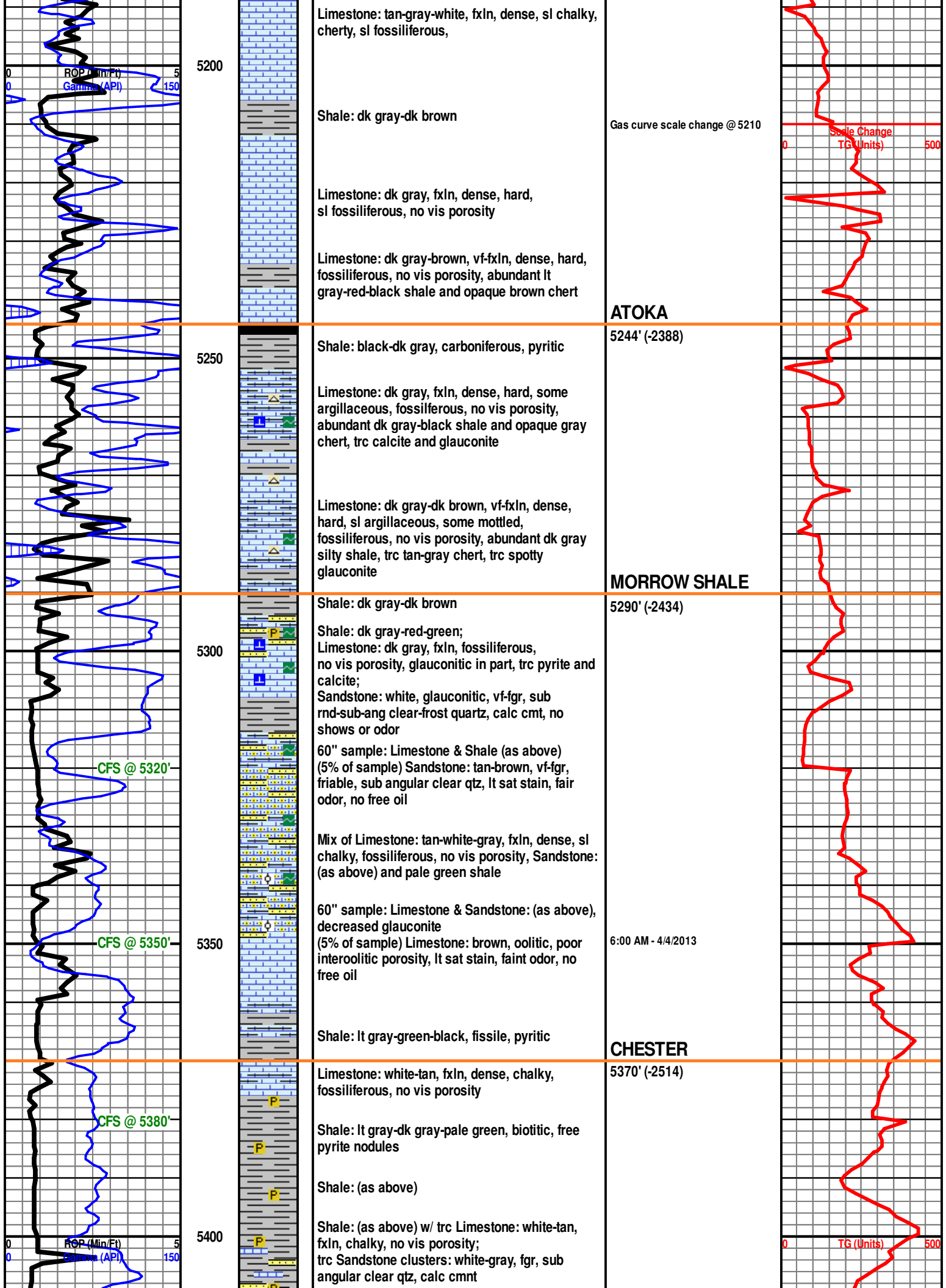
Limestone: tan-brown, fxln, dense, scattered brown-gray chert, no vis porosity, faint odor, no shows noted

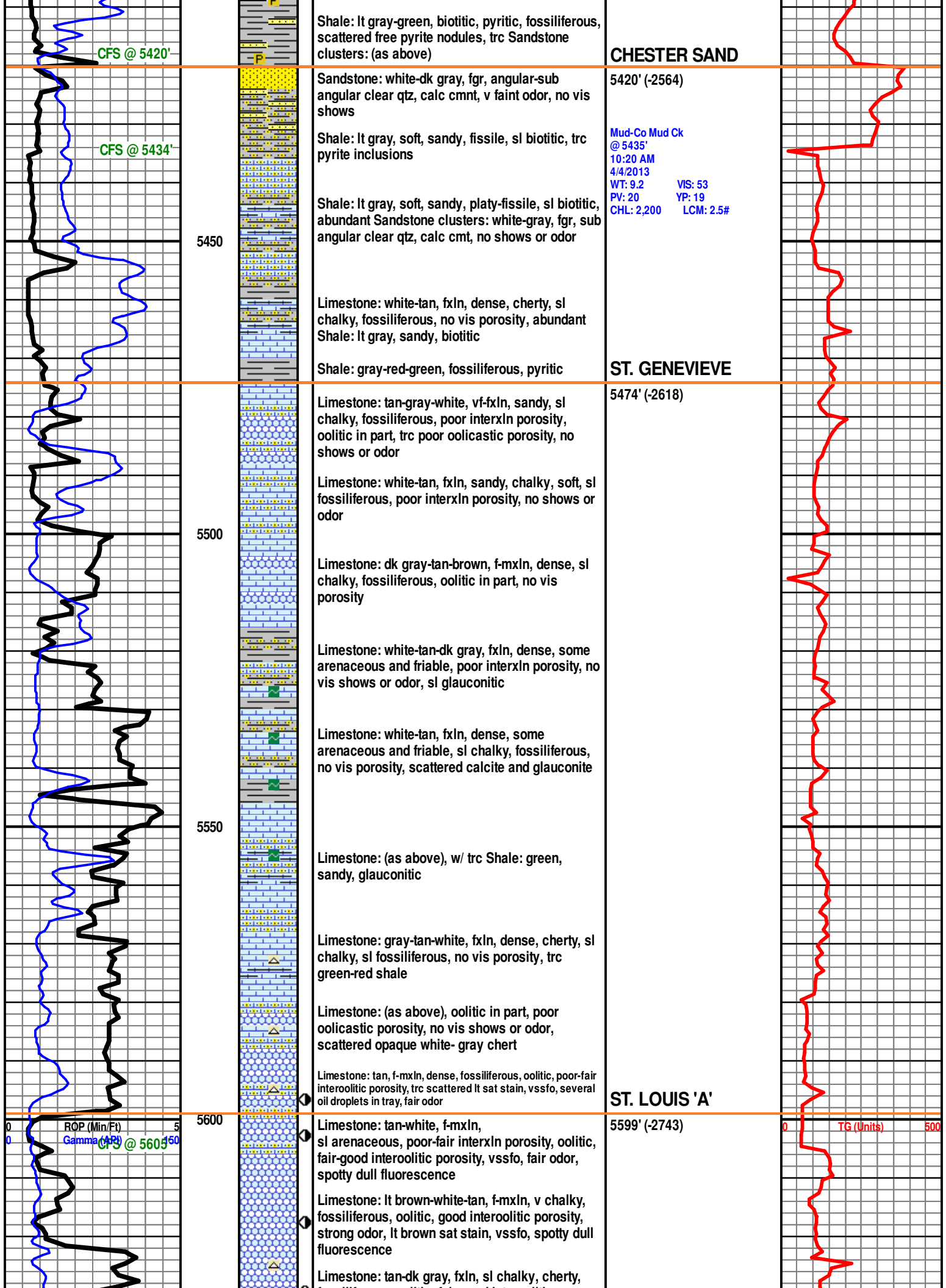
TG (Units) 1000

4679' (-1823)
6:00 AM - 4/3/2013









CFS @ 5420'

Shale: lt gray-green, biotitic, pyritic, fossiliferous, scattered free pyrite nodules, trc Sandstone clusters: (as above)

CHESTER SAND

CFS @ 5434'

Sandstone: white-dk gray, fgr, angular-sub angular clear qtz, calc cmnt, v faint odor, no vis shows

5420' (-2564)

Mud-Co Mud Ck @ 5435' 10:20 AM 4/4/2013 WT: 9.2 VIS: 53 PV: 20 YP: 19 CHL: 2,200 LCM: 2.5#

5450

Shale: lt gray, soft, sandy, fissile, sl biotitic, trc pyrite inclusions

Shale: lt gray, soft, sandy, platy-fissile, sl biotitic, abundant Sandstone clusters: white-gray, fgr, sub angular clear qtz, calc cmt, no shows or odor

Limestone: white-tan, fxln, dense, cherty, sl chalky, fossiliferous, no vis porosity, abundant
Shale: lt gray, sandy, biotitic

ST. GENEVIEVE

Shale: gray-red-green, fossiliferous, pyritic

5474' (-2618)

5500

Limestone: tan-gray-white, vf-fxln, sandy, sl chalky, fossiliferous, poor interxln porosity, oolitic in part, trc poor oolitic porosity, no shows or odor

Limestone: white-tan, fxln, sandy, chalky, soft, sl fossiliferous, poor interxln porosity, no shows or odor

Limestone: dk gray-tan-brown, f-mxln, dense, sl chalky, fossiliferous, oolitic in part, no vis porosity

5550

Limestone: white-tan-dk gray, fxln, dense, some arenaceous and friable, poor interxln porosity, no vis shows or odor, sl glauconitic

Limestone: white-tan, fxln, dense, some arenaceous and friable, sl chalky, fossiliferous, no vis porosity, scattered calcite and glauconite

Limestone: (as above), w/ trc Shale: green, sandy, glauconitic

Limestone: gray-tan-white, fxln, dense, cherty, sl chalky, sl fossiliferous, no vis porosity, trc green-red shale

Limestone: (as above), oolitic in part, poor oolitic porosity, no vis shows or odor, scattered opaque white-gray chert

Limestone: tan, f-mxln, dense, fossiliferous, oolitic, poor-fair interoolitic porosity, trc scattered lt sat stain, vssfo, several oil droplets in tray, fair odor

ST. LOUIS 'A'

5599' (-2743)

ROP (Min/Ft) 5
Gamma (API) 40
CFS @ 5605'

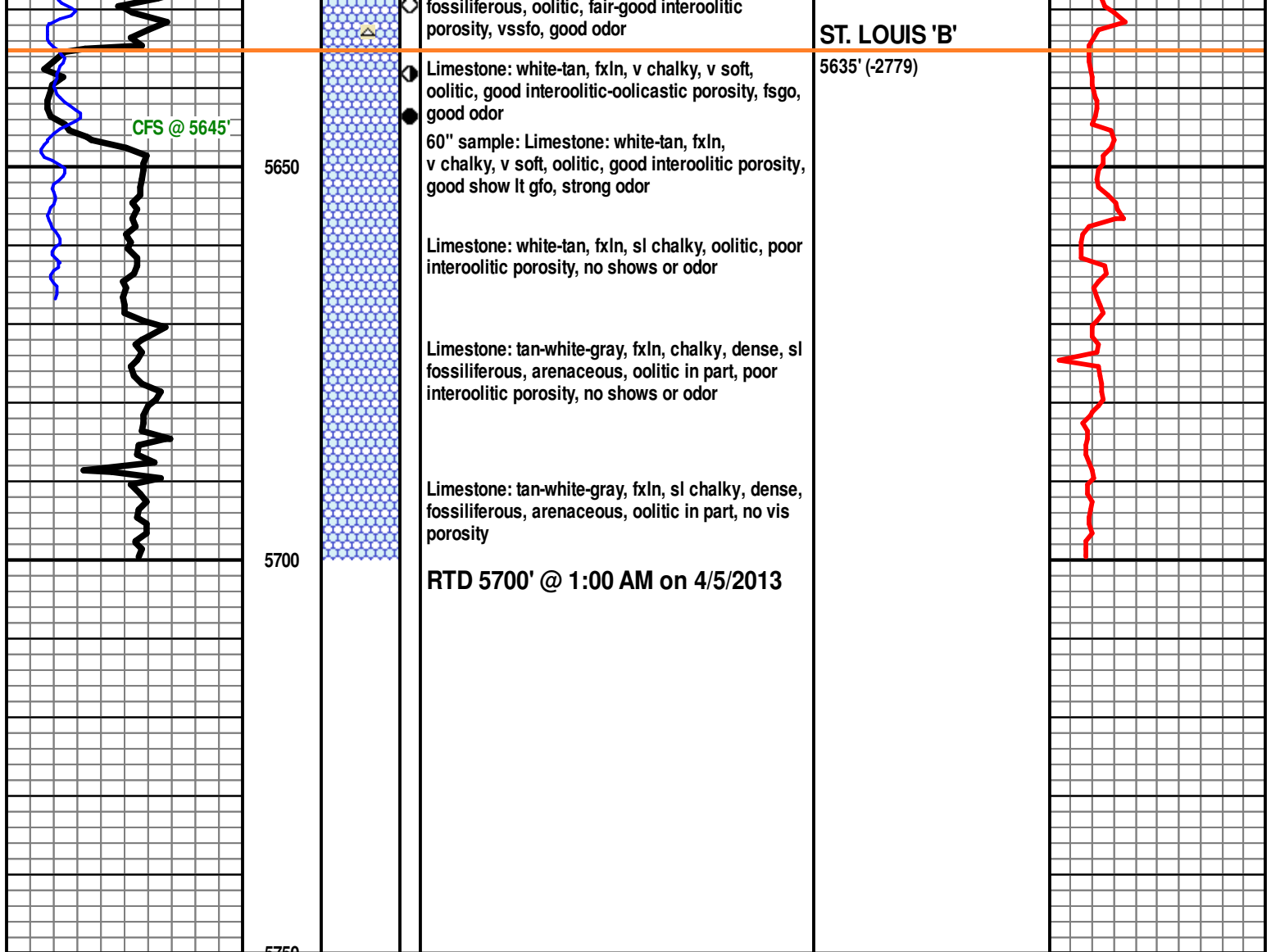
5600

Limestone: tan-white, f-mxln, sl arenaceous, poor-fair interxln porosity, oolitic, fair-good interoolitic porosity, vssfo, fair odor, spotty dull fluorescence

Limestone: lt brown-white-tan, f-mxln, v chalky, fossiliferous, oolitic, good interoolitic porosity, strong odor, lt brown sat stain, vssfo, spotty dull fluorescence

Limestone: tan-dk gray, fxln, sl chalky, cherty,

TG (Units) 500



CFS @ 5645'

ST. LOUIS 'B'

5650

5700

5750

RTD 5700' @ 1:00 AM on 4/5/2013