



# SHAKESPEARE OIL COMPANY JANZEN #1-34

1363' FNL & 339' FEL of Section 34 T16S R34W  
SCOTT COUNTY, KANSAS  
API# 15-171-20956-00-00

## Geologist's Report

### WellSight Systems

Scale 1:240 (5"=100') Imperial  
Measured Depth Log

Well Name: Janzen #1-34

Location: 1363' FNL & 339' FEL of Section 34 T16S R 34W

License Number: API#15-171-20956-00-00

Region: Scott County, Kansas

Spud Date: 07/03/2013

Drilling Completed: 07/14/2013

Surface Coordinates: 1363' FNL & 339' FEL

Bottom Hole Vertical Test

Coordinates:

Ground Elevation (ft): GL 3119

K.B. Elevation (ft): KB 3126

Logged Interval (ft): RTD To: 3800 Total Depth (ft): RTD 4895 LTD 4892

Formation: Mississippi

Type of Drilling Fluid: Chemical (Displace @ 3484))

Printed by MUD.LOG from WellSight Systems 1-800-447-1534 www.WellSight.com

## Operator

Company: Shakespeare Oil Company, Inc. KLN# 7311

Address: 202 W Main  
Salem, IL 62881

## Geologist

Name: Richard S.(Steve) Davis Jr.

Company: Consulting Geologist

Address: 212 N. Market, Suite 268  
Wichita, Kansas 67202

KB 3126                      E-Log Top    Sample Top    Datum

Anhydrite	2435	2439	+691
B/Anhydrite	2453	2458	+673
Topeka	3806	3811	-680
Heebner	3980	3985	-854
Toronto	3996	4002	-870
Lansing	4023	4028	-897
Muncie Creek	4211	4216	-1085
Stark	4312	4316	-1186
Hushpuckney	4357	4362	-1231
BKC	4403	4410	-1277
Marmaton	4454	4461	-1328
Fort Scott	4581	4585	-1455
Cherokee SH	4608	4614	-1482
Johnson Zone	4654	4659	-1528
Mississippi	4794	4800	-1668
Total Depth	4892	4895	-1766

**DAILY PENETRATION: 7:00 AM**

Date	Depth	Activity
07/03/13		spud
07/04	541	drlg
07/05	2110	drlg
07/06	3010	drlg
07/07	3635	drlg
07/08	4150	drlg
07/09	4290	drlg
07/10	4485	cfs (DST 2)
07/11	4542	drlg
07/12	4644	drlg
07/13	4740	drlg
07/14	4895	run 5 1/2"

**CONTRACTOR:**

HD Drilling Rig #3  
Toolpusher: Lew Tresner

**MUD:**

Mud Co (displacement complete @ 3484)  
Tony Maestas

**CASING RECORD:**

Surface: 8 5/8" @ 264'  
Production: 5 1/2"

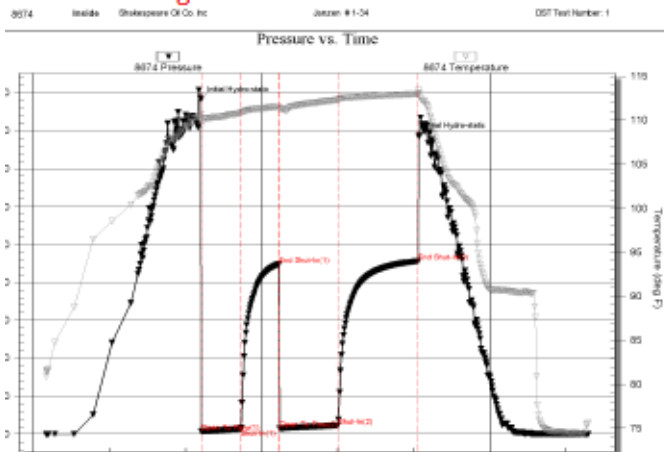
**ELECTRIC LOG: Weatherford**

(DIL, CDL/CNL, PE, MEL & Sonic)

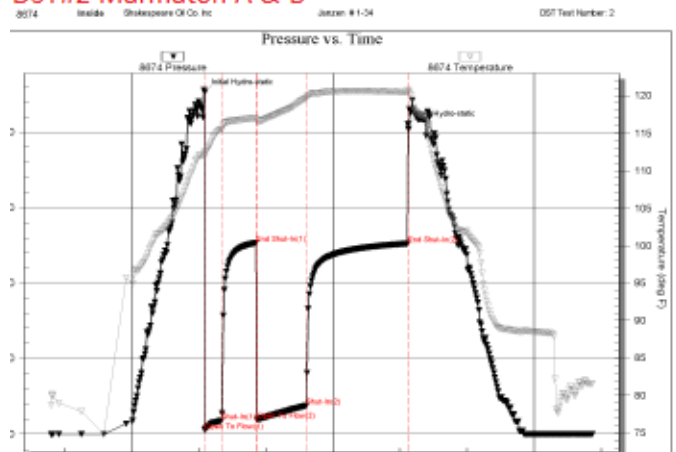
**BIT RECORD:**

Bit No./Size	Make/Type	Out	Ftg	Hrs
#1/ 12 1/4"	JZ/RT	267	267	1 1/2
#2/ 7 7/8"	JZ/HA 20-Q	4895	4628	138

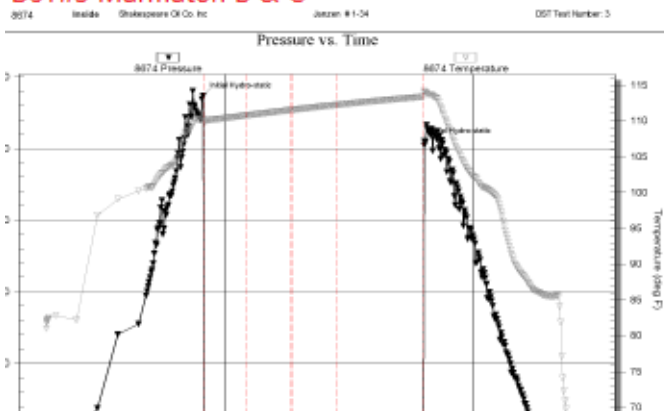
### DST#1 Lansing H & I



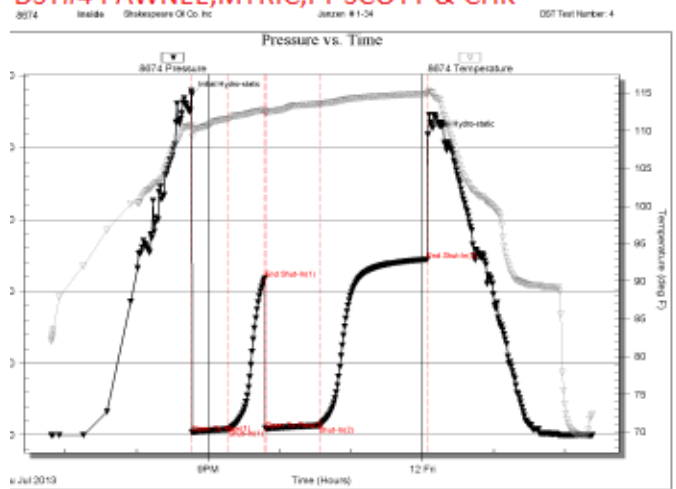
### DST#2 Marmaton A & B



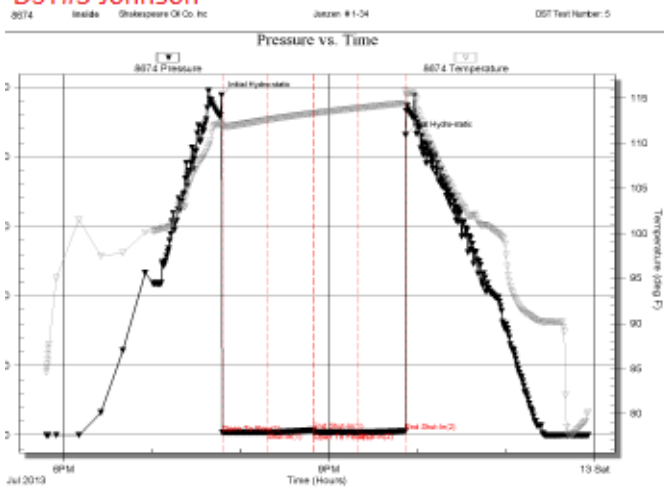
### DST#3 Marmaton B & C



### DST#4 PAWNEE, MYRIC, FT SCOTT & CHK



### DST#5 Johnson



8574 Inside Shakespeare Oil Co. Inc. Jaxxon #1-04 DST Test Number: 4

8574 Inside Shakespeare Oil Co. Inc. Jaxxon #1-04 DST Test Number: 5


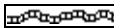
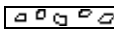

8574 Inside Shakespeare Oil Co. Inc. Jaxxon #1-04 DST Test Number: 5

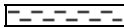



8574 Inside Shakespeare Oil Co. Inc. Jaxxon #1-04 DST Test Number: 5





8574 Inside Shakespeare Oil Co. Inc. Jaxxon #1-04 DST Test Number: 5

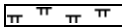
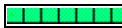


8574 Inside Shakespeare Oil Co. Inc. Jaxxon #1-04 DST Test Number: 5





**Rock Types**

-  Anhy
-  Bent
-  Brec
-  Cht

-  Clyst
-  Coal
-  Congl
-  Dol

-  Gyp
-  Igne
-  Lmst
-  Meta

-  Mrlst
-  Salt
-  Shale
-  Shcol

-  Shgy
-  Sltst
-  Ss
-  Till

ROP (min/ft) ROP (min/ft)	Depth	Lithology	Shows	Geological Descriptions	Remarks
0 — 15					
0 — 15	3800				Vis 51 Wt 8.7 Fil 6.4 PH 11 Chl 3,400 LCM 3# 7/07/13 @ 3677
0 — 15					
0 — 15	3850			Spl's non descript	
0 — 15				Shale, gray, green, black & mar	
0 — 15				Most shale, vcol	
0 — 15				LS, gray-tan, fxln, arg, foss, NV por, abnt shale, vcol	
0 — 15	3900			Most shale, gray & red (spl's poor)	Cuttings few @ sample box
0 — 15				Shale, dk gray, black & mar	
0 — 15				LS, gray-crm, fxln, arg, sltly foss, arg, NV por, hd + Shale, vcol	
0 — 15				LS, tan-crm, f-vfxln, sltly foss, chky, NV por + Shale, vcol	
0 — 15				(spl's poor)	
0 — 15				LS, tan-brown, fxln, sltly foss, chky IP, NV por + Shale, vcol	

ROP (min/ft)

Depth

Lithology

Geological Descriptions

Remarks

Shows

ROP (min/ft)

ROP (min/ft)

TOPEKA

<< 3811(- 685)

conn

conn

conn

conn

Spl's non descript

Shale, gray, green, black & mar

Most shale, vcol

LS, gray-tan, fxln, arg, foss, NV por, abnt shale, vcol

Most shale, gray & red

(spl's poor)

Shale, dk gray, black & mar

LS, gray-crm, fxln, arg, sltly foss, arg, NV por, hd + Shale, vcol

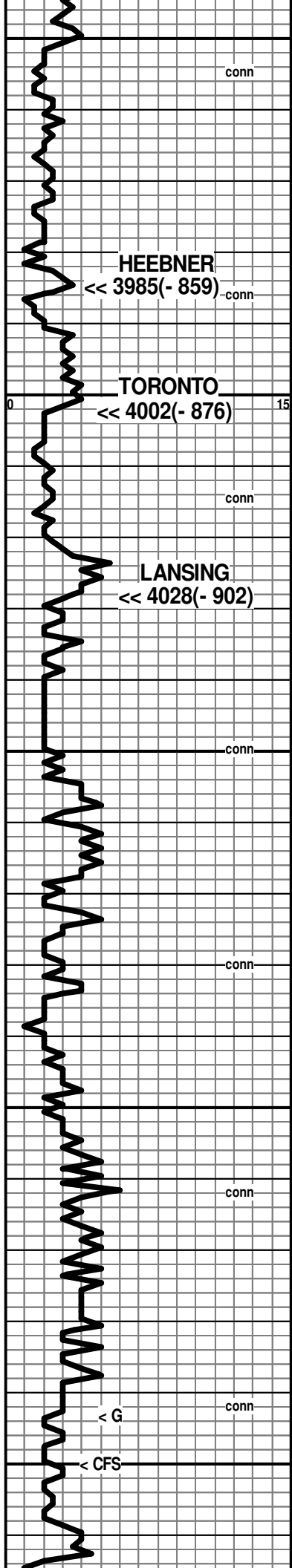
LS, tan-crm, f-vfxln, sltly foss, chky, NV por + Shale, vcol

(spl's poor)

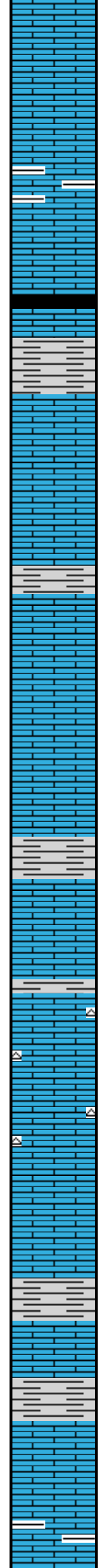
LS, tan-brown, fxln, sltly foss, chky IP, NV por + Shale, vcol

Vis 51 Wt 8.7 Fil 6.4 PH 11  
Chl 3,400 LCM 3#  
7/07/13 @ 3677

Cuttings few @ sample box



3950  
 4000  
 4050  
 4100  
 4150



LS, tan-brown, fxln, sltly foss, arg, NV por

LS AA, abnt shale, vcol

LS, crm-tan, sltly foss, chky, NV por, abnt shale, vcol

LS, tan-brown, vf-fxln, dense, NV por

Shale, black carb (2 pc's) + pyr

Most shale, vcol + LS, dk gray-tan, vfxln, sltly foss, NV por, dense

Shale, mar, dk gray & black

LS, white-crm, fxln, foss & ool, P oom por, SS hvy res oil, sp'd asph stn, N fluor, N odor + Cht, white, opq

LS, crm-white, fxln, chky IP, sub ool-foss, P oom-pp por, NS

Shale, dk gray, green & mar

LS, crm-white, fxln, chky, foss & ool, P pp & oom por, spt'd stn, NSFO, N fluor, N odor + Cht, white, opq

LS, gray-tan, vfxln, foss & ool, dense, NV por

LS, tan-off white, vfxln, sltly foss, NV por, dense

Shale, dk gray, mar & green

LS, off white-crm, f-vfxln, ool, P oom por, spt'd stn, NSFO, N fluor, N odor

LS, gray-off white, f-vfxln, sub ool, P iool por, NS, hd + Shale, dk gray, green & mar

LS, crm-tan, f-mxln, foss & ool, P ipart por & P ixln por, NSFO, spt'd asph stn, N fluor, N odor + Cht, crm-tan, opq

LS, gray-tan, f-vfxln, sltly foss, NV por, dense (abnt shale vcol)

LS AA + LS, tan-crm, fxln, sltly foss & ool, P pp por, spt'd asph stn, NSFO, N fluor, N odor

Shale, black- dk gray

LS, brown-gray, f-vfxln, NV por, dense + Shale, black, dk gray, green & mar

Shale, black, dk gray, green & mar

LS, white-crm, f-mxln, foss & ool, F-P ipart por, NS + Shale, vcol

LS, tan-off white, f-vfxln, foss, NV por +Shale, dk gray-black & mar

Cuttings few @ sample box

Cuttings few @ sample box

Cuttings few @ sample box

**HEEBNER**

<< 3985(- 859) conn

**TORONTO**

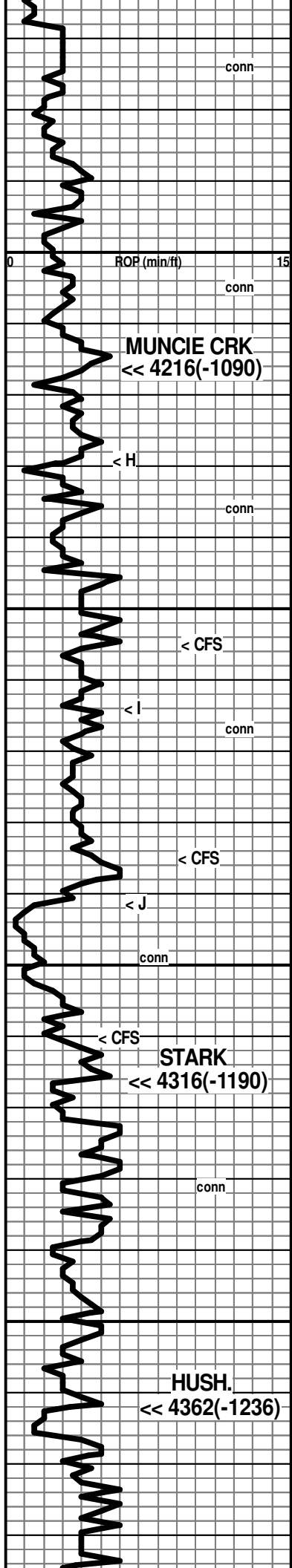
<< 4002(- 876) conn

**LANSING**

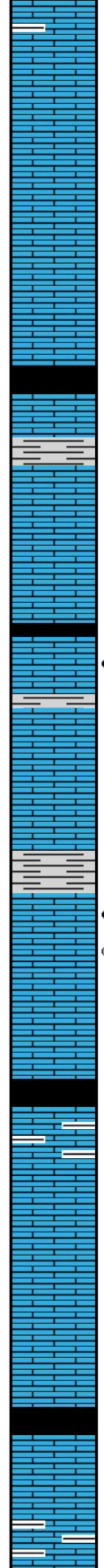
<< 4028(- 902) conn

< G

< CFS



4200  
4250  
4300  
4350



LS, crm-white, fxln, ool, chky, P oom por, NS + Shale, black, dk gray & mar

LS, tan-brown, vfxln, sltly foss, NV por, dense

LS, white-tan, f-vfxln, chky IP, sub ool & foss, P vgy por, NS  
(spl's fine)

LS, brown-crm, f-mxln, slty foss & ool, P ixln por, NS, hd

LS, white-gray, fxln, chky IP, sltly foss & ool, P vgy - pp por, few pc's spt'd asph stn, most barren, NSFO

Shale, black carb

LS, tan-brown, vf-micro xln, sltly foss, NV por, dense + Shale, gray, black & mar  
(spl's fine)

LS, crm-tan, fxln, chky IP, ool, F oom por, NS, N odor  
(spl's fine)

LS, brown-gray, mot, vfxln, sltly foss, NV por, hd

Shale, black carb

LS, gray-tan, fxln, sub ool & foss, chky IP, P oom por & P ixln por, SSFO, spt'd lt stn, dull spt'd fluor, fnt odor + Shale, dk gray, black & mar

LS, crm-white, fxln, chky, sub ool, P pp por, ? spt'd stn, NSFO + LS, gray-brown, vf-fxln, sltly foss, NV por, dense

Shale, dk gray, black, mar & green

LS, tan-gray, fxln, ool, F-G oom & iool por, S-FSFO (V hvy), spt'd-unf asph stn few pc's, most barren, dull spt'd fluor, F odor

LS, gray-tan, f-vfxn, sub ool, NV por, dense

Shale, black carb

LS, brown-gray, f-vfxln, NV por, hd + Shale, gray-black, mar

LS, brown, gray, f-vfxln, sltly foss, rr P vgy por, NS

LS, gray-tan, fxln, chky, ool, P oom por-vgv por, NSFO, few pc's w/ spt'd asph edge stn, N fluor, N odor

LS, tan-gray, vfxln, sltly foss, NV por, dense + Cht, gray, opq

Shale, black carb

LS, brown-gray, f-mxln, sltly foss, NV por, dense + LS, crm-gray, fxln, chky IP, NV por

LS, brown-gray, fxln, arg, sltly foss, NV por, hd + Shale, black, dk gray & mar + Cht, gray, opa

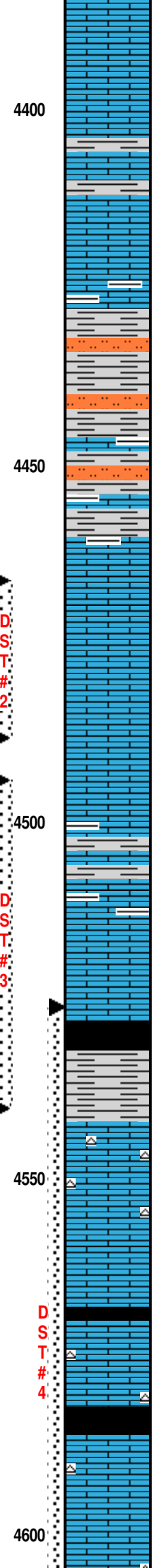
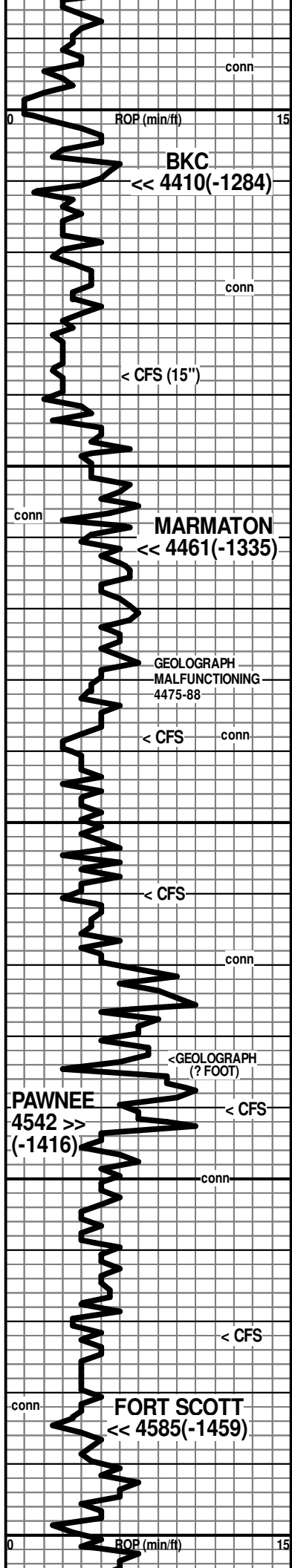
Vis 51 Wt 9.2 Fil 8.8 PH 10  
Chl 4,000 LCM 2#  
7/08/13 @ 4179

Survey @ 4285, 1/4  
(Too windy for strap)

**DST #1 4214 - 4285**  
(Lansing H & I Zones)  
30 30 45 60  
**BLOW:**  
IF surface blow  
FF surface blow  
**RECOVERY:**  
10' WCM w/few oil spots  
(23% w 77% m)  
60' WCM  
(38% w 62% m)  
70' TOTAL FLUID  
IHP 2202  
IFP 17 - 32  
ISIP 1118  
FFP 36 - 56  
FSIP 1139  
FHP 1965 BHT 108 F

Vis 47 Wt 9.2 Fil 10.4 PH 9  
Chl 7,500 LCM 2#  
7/09/13 @ 4310

Vis 47 Wt 9.2



LS, tan-gray, f-mxln, foss & ool, F-P ixln por & F-P ipart por, 2 pc's spt'd stn, SSFO, dull spt'd fluor, V fnt odor

Abnt shale, dk gray-black & green + LS, tan-gray, vfxln, sltly foss, NV por & Cht, gray, opq

LS, brown-gray, mot, vf-fxln, arg, foss & ool, NV por, dense

Shale, gray-black & green + Sltst, gray-green

Shale, gray-green, black & brown + Sltst, gray

Shale & Sltst AA + LS, gray-tan, f-vfxln, foss & ool, arg, NV por

LS, brown-gray, vfxln, foss & ool, NV por, dense + LS, brown-tan, vfxln, NV por, dense

LS, tan-gray, f-vfxln, sub ool & foss, P vgy por, SSFO, spt'd stn, spt'd fluor, fnt odor

LS, gray-tan, fxln, foss & ool, F iool-ipart por, fri, GSFO, spt'd dk stn, dull unf fluor, F odor

LS, crm-white, fxln, chky IP, ool-sub ool, P ixln por & P oom por, S-FSFO, spt'd lt stn, dull spt'd fluor, V fnt odor

AA + LS, gray-brown, vf-fxln, sltly foss, arg, NV por, dense w/inc Shale, black, dk gray & mar

LS, tan-crm, fxln, foss & ool, F-P iool-ipart por & F-P ixln por, S-FSFO, spt'd-unf lt stn, dull spt'd fluor, fnt odor

(abnt shale vcol)

Shale, black carb

Shale, mar, gray & black

LS, gray-tan, f-vfxln, sub ool, chky IP, few pc's P iool por, SSFO, spt'd stn, dull spt'd fluor, N odor + Cht, gray, sltly foss, opq-transl (abnd shale vcol)

spl's fine, abnt shale & vcol

Shale, black carb + vcol

Most shale vcol w/few pc's LS, tan-gray, vfxln, sub ool-foss, ? por & spt'd stn, (V fine)

Shale, black carb & vcol

spl's 99% shale, red, gray, green, black, few pc's LS, fxln, brown-gray, sltly foss & ool, ? por (V fine)

Pipe Strap @ 4488, .09 strap long

**DST#2 4466 - 4488**

(Marmaton A & B)  
 15 30 45 90  
 BLOW:  
 IF BOB 12 1/2 min  
 ISI Surface return in 18 min  
 FF BOB 12 min  
 FSI Surface return in 10 min  
 RECOVERY: 543' GIP  
 77' GO (6% g 94% o)  
 124' MCGO (24% g 58% o 18% m)  
 124' MCGO (30% g 48% o 22% m)  
 62' G&MCO (10%g 60% o 30% m)  
 120' G&OCM (17% g 38% o 45% m)  
 507' TOTAL FLUID (Gr 26 API)  
 IHP 2260  
 IFP 25 - 89  
 ISIP 1266  
 FFP 96 - 188  
 FSIP 1261  
 FHP 2050 BHT 116 F  
 Vis 58 Wt 9.3 Fil 8.8 PH 10.5  
 Chl 7,000 LCM 2#  
 7/10/13 @ 4488

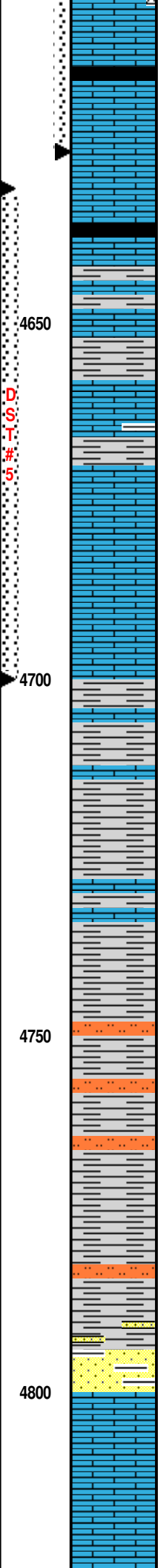
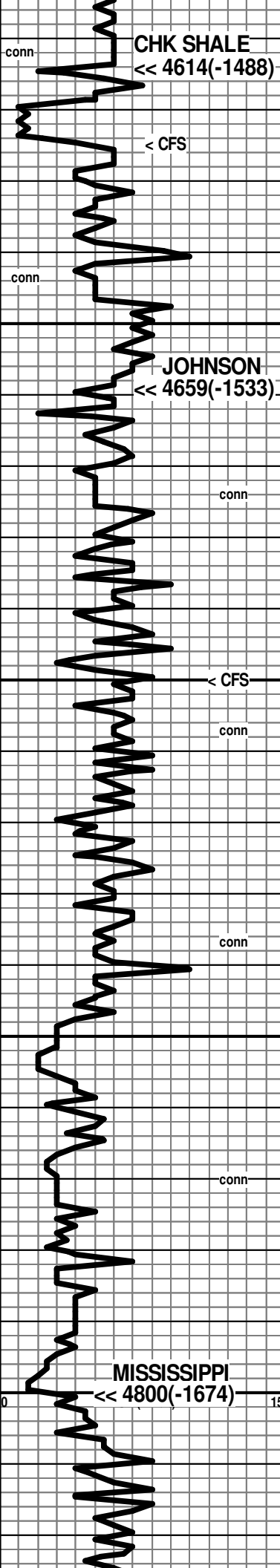
**DST#3 4494 - 4540**

(Marmaton B & C)  
 30 30 30 60  
 BLOW:  
 IF Weak surface  
 FF No blow  
 RECOVERY:  
 1' M w/oil spots  
 IHP 2367  
 IFP 16 - 17  
 ISI 20  
 FFP 17 - 18  
 FSI 21  
 FHP 2050 BHT 107 F  
 Vis 52 Wt 9.2 Fil 9.6 PH 10.5  
 Chl 7,400 LCM 2#  
 7/11/13 @ 4542

**DST#4 4525 - 4625**

(Pawnee, Myrick, Ft Scott, Cherokee)  
 30 30 45 90  
 BLOW:  
 IF Weak built to 3 1/2"  
 FF Weak built to 4 3/4"  
 (No return ISI or FSI)  
 RECOVERY: 188' GIP  
 58' SO&GCM (12% g 4% o 84% m)  
 60' SO&GCM (21% g 2% o 77% m)  
 118' TOTAL FLUID  
 IHP 2366#  
 IFP 17 - 39  
 ISIP 1089  
 FFP 42 - 65  
 FSIP 1221  
 FHP 2090 BHT 118 F





Sample 99% shale, non descript

LS, gray-tan, fxln, sub ool, chky IP, NV por, dense + Shale dk gray- black

Shale, black carb

LS, gray-tan, mot, f-vfxln, sub ool, arg, NV por, dense + abnt shale vcol

Shale, black, dk gray, mar, green

LS, gray-brown, vfxln, sltly foss + abnt shale vcol

LS, gray-tan, f-vfxln, sltly foss, few pc's P ixln, VSSFO (bleeding), spt'd stn, N fluor, N odor (most shale vcol)

LS, brown-gray, f-vfxln, foss & ool, NV por, abndt shale, red, mar, gray, black & green

LS, tan-brown, fxln, sltly foss, dense, NV por + Shale vcol

LS, brown-gray, vf-fxln + Shale, gray, green, black

Most Shale, dk gray, green & mar & yel + LS, brown-gray, vfxln, dense, NV por

Shale, gray, green, mar, brown & yel + Slst, gray-green

Shale, green, gray, black, mar & yel + Slst, gray-green

Shale, vcol

Shale, gray, green, brown, mar & green + Slst, gray & green

SS, tan-clr qtz, f-mgrn(some crs), mod sort, rd-sub rd, comp-fri, F- G ig por, NS + LS, white-green, fxln, V sdy, st, NV por

LS, white-tan, f-vfxln, sdy, chky IP, NV por + abnd shale vcol

LS, crm-white & green, fxln, chky IP, sdy, NV por + abnd shale vcol

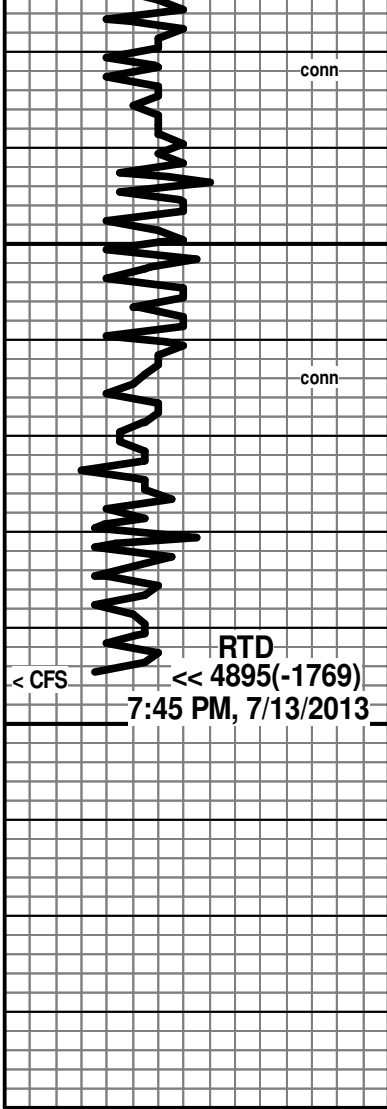
LS AA + LS, white-crm, fxln, chky IP, sub ool

Vis 50 Wt 9.3 Fil 10.8 PH 10.5  
 Chl 11,000 LCM 2#  
 7/12/13 @ 4668

**DST#5 4631 - 4700**  
 (Johnson Zone)  
 30 30 30 30  
 BLOW:  
 IF Surface died 18 min  
 FF No blow  
 RECOVERY: 5' M w/oil scum  
 IHP 2441  
 IFP 18 - 20  
 ISIP 34  
 FFP 19 - 20  
 FSIP 29  
 FHP 2156 BHT 111 F

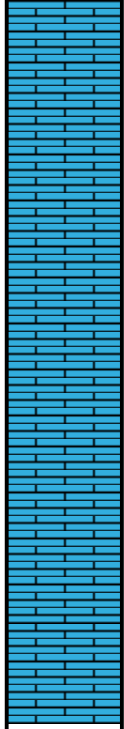
Vis 49 Wt 9.3 Fil 12 PH 10.5  
 Chl 11,000 LCM 2#  
 7/13/13 @ 4768





4850

4900



w/few qtz grns + abnd shale vcol

LS, white-crm, fxln, chky IP, sub ool, NV por + abnd shale vcol

LS, white-crm, fxln, chky IP, ool-sub ool, sltly sdy, NV por + abnd shale vcol

LS, white-crm, fxln, chky IP, sub ool-ool, chky, NV por + abnd shale vcol

LS, white-crm, fxln, chky, ool, sft, NV por + LS, white-tan, vxln, NV por & abnt shale vcol

LS, white-crm, fxln, ool, chky, P iool por, NS + LS, white, fxln chky, NV por + Shale, vcol

Survey @ 4895, 3/4